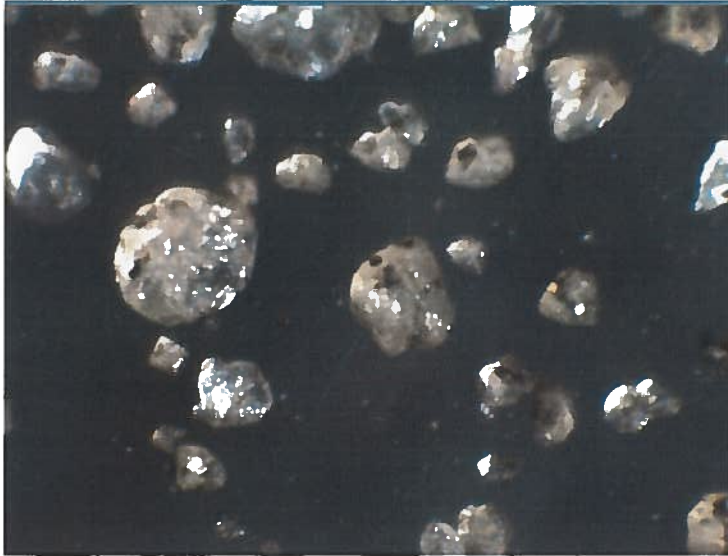


### Mel Jones Sample # 2 Summary



<b>Sphericity</b>	8
<b>Roundness</b>	5
<b>Fracturing</b>	Moderate
<b>Clusters</b>	None
<b>Overall Gradation</b>	Very Fine
<b>Impurities (%)</b>	5-10%

Sample		Mel Jones # 2	
Depth		Surface	
Date		11-Mar-19	
Mesh	% Vol	% Ret.	% Pass
3/8	0.0	0.0	100.0
5/16	0.0	0.0	100.0
1/4	0.0	0.0	100.0
4	0.0	0.0	100.0
8	0.0	0.0	100.0
10	0.0	0.0	100.0
16	0.0	0.0	100.0
20	0.0	0.0	100.0
30	2.3	2.3	97.7
40	15.0	15.0	82.7
45	8.7	8.7	74.0
50	5.2	5.2	68.8
60	9.8	9.8	59.0
70	11.0	11.0	48.0
80	10.4	10.4	37.6
100	16.2	16.2	21.4
140	17.3	17.3	4.0
200	4.0	4.0	0.0
PAN	0.0	0.0	
<b>Total:</b>	<b>100.0</b>		

Additional Comments: Photo taken at 2.5x