

95 JUL 24 08 38

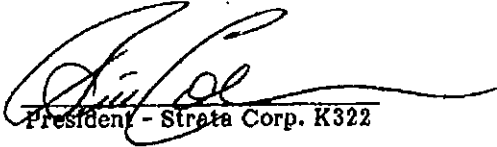
KJ057291 "A"

LAND TITLE OFFICE  
KAMI GOPS

D.F. 20

**SPECIAL RESOLUTION**

The Owners of Strata Plan K322, approve the designation of a portion of the common property of Strata Plan No. K322, adjacent to Strata Lot 6 and measuring 27 feet by 30 feet, as limited common property for the exclusive use and benefit of Strata Lot 6, pursuant to Section 53(1) of the Condominium Act of British Columbia.

  
President - Strata Corp. K322

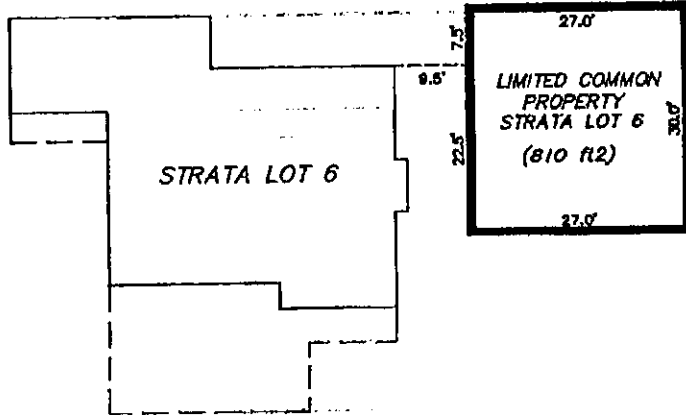
DULY PASSED AND RESOLVED NOV. 16/94

07/21/95 A2935m DOC FIL 20.00

**SKETCH PLAN TO ACCOMPANY SPECIAL RESOLUTION DESIGNATING LIMITED COMMON PROPERTY ADJACENT TO STRATA LOT 6 , STRATA PLAN K322 , O.D.Y.D.**



SCALE 1 inch = 20 feet (All distances are in feet)



Certified correct this 6th day of December, 1994.

B.C.L.S.

**R. R. RUNNALLS & ASSOCIATES  
B. C. LAND SURVEYORS**

No. 2 - 1470 WATER STREET KELOWNA, B. C.,  
V1Y 1J5 PH 763 7322

This plan lies within the Regional District of Central Okanagan

DWG. No.: 9773SK.DWG

FILE: 9773