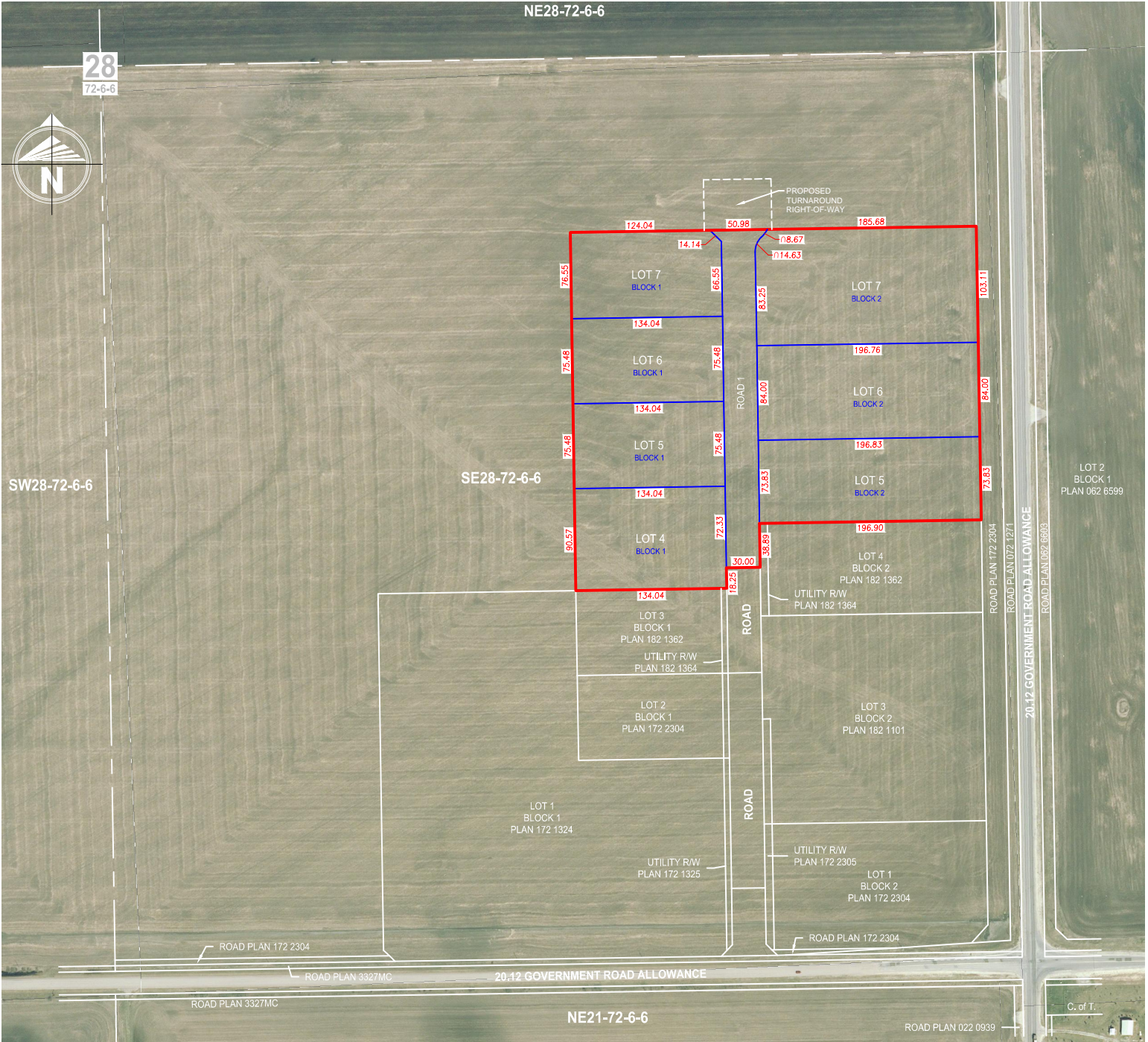


COUNTY OF GRANDE PRAIRIE NO. 1
TENTATIVE PLAN
SHOWING PROPOSED SUBDIVISION OF
PART OF THE
S.E. 1/4 SEC. 28, TWP. 72, RGE. 6, W.6M.

LAND DEALT WITH BY THIS
PLAN IS SHOWN OUTLINED THUS:
AND CONTAINS: 10.30 HECTARES (25.46 ACRES)

*NO FIELD SURVEY WAS UNDERTAKEN TO PRODUCE THIS PLAN
*CONTAINS INFORMATION LICENSED UNDER THE
'OPEN GOVERNMENT LICENSE' - COUNTY OF GRANDE PRAIRIE No. 1

INSTRUMENTS AFFECTING LAND (NOT NECESSARILY SHOWN ON THE PLAN)	
Reg. No.	Name
802 045 886	Utility R/W - ATCO Gas and Pipelines Ltd.
172 096 614	Caveat - Roadway - County of Grande Prairie No. 1
172 096 615	Caveat - Roadway - County of Grande Prairie No. 1
172 096 616	Caveat - Roadway - County of Grande Prairie No. 1
.	.
.	.
.	.
.	.
.	.
.	.
.	.



PROJECT DETAILS		REVISIONS	
SURVEYOR:	BRUCE C. E. TATTTRIE, A.L.S.	1	JANUARY 4, 2018
PROJECT:	PEREGRINE PHASE 1E	2	FEBRUARY 2, 2018
DRAFTED BY:	BLAKE ROSSOL	3	MAY 14, 2018
CHECKED BY:	DARRIN TRYDAL		
DATE:	NOVEMBER 29, 2017		
SCALE: 1:5000 on 11"x17" page, 1:2500 on 24"x36" page			
J:\JOBS\2017\17GEME6084\CAD\DRAWING\17GEME6084-TE2-R3.DWG			