



Reimpet Holding Group, C.A.  
J-00318668-6



# Inspection Report Schlumberger Land Rigs

# Inspection Report Schlumberger Land Rigs

Below we detail the inspection carried out on the Schlumberger's Land Rigs equipment, corroborating the information sent by the supplier of these equipment.

QTY	CAPACITY	LOCATION	STATUS	SERIAL
03	1000 HP	Assembly Plant Sector Palital, km 16 Highway Pto. Ordaz - El Tigre.	New, Assembled on site.	Rig SRL 230, 231, 232
02	1500 HP	Assembly Plant Sector Palital, km 16 Highway Pto. Ordaz - El Tigre.	New, Assembled on site.	Rig SRL 242, 243
09	1000 HP	Vía Lechozal, Base SRL, Anaco Edo. Anzoátegui.	New, original packaging since their arrival.	Rig SRL 233, 234, 235, 236, 237, 238, 239, 240, 241

RIGS 1000 HP



Assembly Plant Sector Palital, km 16 Highway Pto. Ordaz - El Tigre.

## 1000 HP Equipment - Assembly Plant Sector Palital, km 16 Highway Pto. Ordaz - El Tigre.



- It was observed that Mast was assembled correctly, under the parameters required in this type of equipment.
- Only a visual inspection was carried out, no test of performance was carried out by the staff of RHG, C.A., however, the personnel's expertise claimed to be in excellent condition.

### Mast RIG

Make	Baoji Oilfield Machinery Co., Ltd.
Height	149 Ft
Static Hook Load	700,000 lbs
Drilling Line Size	1 ¼"



# 1000 HP Equipment - Assembly Plant Sector Palital, km 16 Highway Pto. Ordaz - El Tigre.

Mast RIG



## 1000 HP Equipment - Assembly Plant Sector Palital, km 16 Highway Pto. Ordaz - El Tigre.



### Substructure

Make	Baoji Oilfield Machinery Co., Ltd.
Type	Slingshot
Floor Height	29.5 Ft
Clear Height	25 Ft
Rotary Load Capacity	700,000 lbs
Setback Load Capacity	400,000 lbs

- Substructure in excellent condition.
- It rests on rail system for tower mobilization without having to lower the mast or undress the main structure.
- It has an internal lifting system

1000 HP Equipment - Assembly Plant Sector Palital, km 16 Highway Pto. Ordaz - El Tigre.

Substructure





1000 HP Equipment - Assembly Plant Sector Palital, km 16 Highway Pto. Ordaz - El Tigre.

### Drawworks



- Winch completely assembled with its respective drilling line.
- Components in excellent condition.

### Drawworks

Make	Baoji Oilfield Machinery Co., Ltd.
Model	JC-40DB
Input Power	Dos Motores AC, 600 KW Explosion Proof VFD
Horsepower Rating	1000 Hp



## 1000 HP Equipment - Assembly Plant Sector Palital, km 16 Highway Pto. Ordaz - El Tigre.

Travelling Assembly	
<b>Travelling Block</b>	Baoji Oilfield Machinery Co., Ltd.
Load Rating	700,000 lbs
<b>Swivel</b>	Baoji Oilfield Machinery Co., Ltd.
Load Rating	500.000 lbs
<b>Hook</b>	Baoji Oilfield Machinery Co., Ltd.
Load Rating	700,000 lbs
<b>Top Drive</b>	BPM
Load Rating	700,000 lbs
Max. Drill Torque	29502 lbs/ft
<b>Rotary Table</b>	Baoji Oilfield Machinery Co., Ltd.
Model	27 1/2" ZP275
Load Rating	1,000,000 lbs
Max. Drill Torque	27459N.m
Table Opening Size	27 1/2"



- Working floors are in perfect condition.
- Some paint details due to environmental factors.



1000 HP Equipment - Assembly Plant Sector Palital, km 16 Highway Pto. Ordaz - El Tigre.

Travelling Assembly



## 1000 HP Equipment - Assembly Plant Sector Palital, km 16 Highway Pto. Ordaz - El Tigre.

Mud Pump(s)	
Manufacturer	Baoji Oilfield Machinery Co., Ltd.
Model	(2) SET F-1300
Max. Input Horsepower	1,300 HP
Input Power	1 Motor AC 1200 KW VFD
Mud System	
Active (usable) Volume	Intermediate, Suction, Mixing, Return, Treatment. Total: 1600 Bls
Number of Tanks	7 Tanks (5 Active)
Shale Shaker	Mi-Swaco Mongoose Pro
Desander	Mi-Swaco 2-12 D-Sander
Destiller	Mi-Swaco 8T4 D-Silter
Vacuum Degasser	Mi-Swaco Compact Vaccum D-Gasser
Centrifuge	Mi-Swaco 518



- Pumping system installed.
- It has all pumping lines Set of connected operating tanks, in good condition.
- In excellent condition



1000 HP Equipment - Assembly Plant Sector Palital, km 16 Highway Pto. Ordaz - El Tigre.

Mud Pumps & Mud System



## 1000 HP Equipment - Assembly Plant Sector Palital, km 16 Highway Pto. Ordaz - El Tigre.



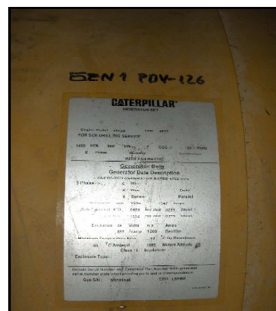
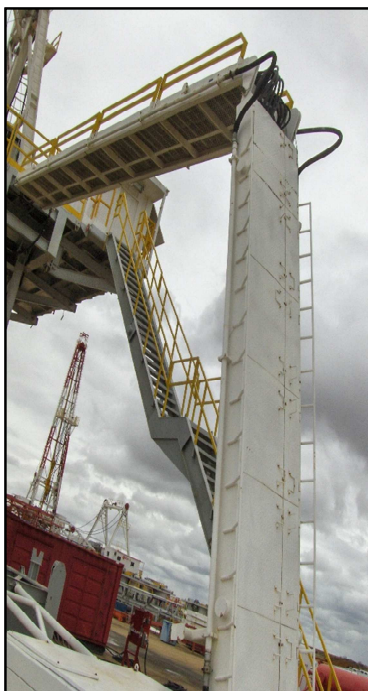
- Generation system assembled on site.
- It has total wiring.
- It has a set of main plants and an auxiliary generator.
- In excellent condition

### Power Generation

Make	Caterpillar
Model	(3) SET CAT 3512B
Horsepower Rating	480V,320EKW
Kilowatt Rating	Generators 3 SR4B – 1750 KVA
Auxiliary Generator	CAT C15

# 1000 HP Equipment - Assembly Plant Sector Palital, km 16 Highway Pto. Ordaz - El Tigre.

## Power Generation





## 1000 HP Equipment - Assembly Plant Sector Palital, km 16 Highway Pto. Ordaz - El Tigre.

Well Control	
Annular Preventer	Shanghai Shenkai Petroleum Equipment Co., Ltd.
Pressure Rating	5,000 psi
Opening Size	13-5/8"
Ram Preventer	Shanghai Shenkai Petroleum Equipment Co., Ltd.
Pressure Rating	5.000 psi
Opening Size	13-5/8"
Choke Manifold	Valvulas 4 1/16" x 5K PSI WP
Pressure Rating	5,000 psi
Size	4 1/16"
Accumulator	JYS21-25
Number of Stations	7 Stations
Total Volume	340 Gal
Pressure Rating	3,000 psi
Poor Boy	YQF-1200
Vessel Diameter	1200 mm

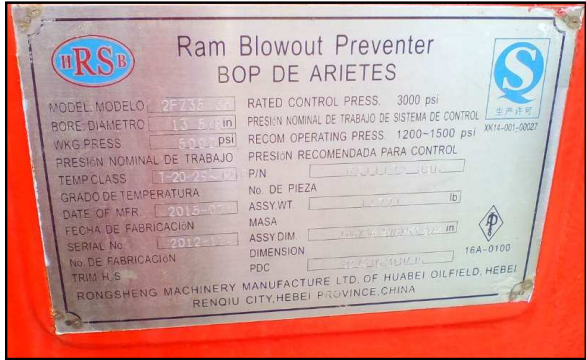


- Well control system installed.
- In excellent condition.



# 1000 HP Equipment - Assembly Plant Sector Palital, km 16 Highway Pto. Ordaz - El Tigre.

## Well Control



## Equipos 1000 HP - Planta Ensambladora Sector Palital, Km 16 Vía Pto. Ordaz El Tigre.



### Tubulars

12,000' x 5", 19.5 lbs/ft, R-II, S-135  
3,500' x 3 1/2", 13.30lbs/ft, RII, S-135

120 Joints x 5", 49.3 lbs/ft  
20 Joints x 3 1/2" 25.3 lbs/ft

8" 6 1/2" 4 3/4"

- Pipe in stacked place, close to each equipment.
- In excellent condition

1000 HP Equipment - Assembly Plant Sector Palital, km 16 Highway Pto. Ordaz - El Tigre.

Tubulars



RIGS 1500 HP



Assembly Plant Sector Palital, km 16 Highway Pto. Ordaz - El Tigre.

## 1500 HP Equipment - Assembly Plant Sector Palital, km 16 Highway Pto. Ordaz - El Tigre.



- It is observed armed Mast correctly, under the parameters required in this type of equipment.
- Only visual inspection was performed, equipment is in excellent condition.

### Mast RIG

Make	Baoji Oilfield Machinery Co., Ltd.
Height	149 Ft
Static Hook Load	100,000,000 lbs
Drilling Line Size	1-3/8"



1500 HP Equipment - Assembly Plant Sector Palital, km 16 Highway Pto. Ordaz - El Tigre.

Mast RIG





## 1500 HP Equipment - Assembly Plant Sector Palital, km 16 Highway Pto. Ordaz - El Tigre.



- Substructures in excellent condition.
- It rests on rail system for tower mobilization without having to lower the mast or undress the main structure.
- It has internal lifting system.

Substructure	
Make	Baoji Oilfield Machinery Co., Ltd.
Type	Slingshot
Floor Height	29.5 Ft
Clear Height	25 Ft
Rotary Load Capacity	1,000,000 lbs
Setback Load Capacity	490,000 lbs

# 1500 HP Equipment - Assembly Plant Sector Palital, km 16 Highway Pto. Ordaz - El Tigre.

## Substructure



1500 HP Equipment - Assembly Plant Sector Palital, km 16 Highway Pto. Ordaz - El Tigre.

### Drawworks



- Winch completely assembled with its respective drilling line.
- Components in excellent condition.

### Drawworks

Make	Baoji Oilfield Machinery Co., Ltd.
Model	JC-40DB
Input Power	Dos Motores AC, 600 KW Explosion Proof VFD
Horsepower Rating	1500 Hp



1500 HP Equipment - Assembly Plant Sector Palital, km 16 Highway Pto. Ordaz - El Tigre.

Drawworks



## 1500 HP Equipment - Assembly Plant Sector Palital, km 16 Highway Pto. Ordaz - El Tigre.

Travelling Assembly	
<b>Travelling Block</b>	Baoji Oilfield Machinery Co., Ltd.
Load Rating	1,000,000 lbs
<b>Swivel</b>	Baoji Oilfield Machinery Co., Ltd.
Load Rating	1,000.000 lbs
<b>Hook</b>	Baoji Oilfield Machinery Co., Ltd.
Load Rating	1,000,000 lbs
<b>Top Drive</b>	BPM
Load Rating	1,000,000 lbs
Max. Drill Torque	42145 lbs/ft
<b>Rotary Table</b>	Baoji Oilfield Machinery Co., Ltd.
Model	37 1/2" ZP275
Load Rating	1,000,000 lbs
Max. Drill Torque	27459N.m
Table Opening Size	37 1/2"



- Working floors in perfect condition.
- Some paint details due to environmental factors.



1500 HP Equipment - Assembly Plant Sector Palital, km 16 Highway Pto. Ordaz - El Tigre.

Travelling Assembly





## 1500 HP Equipment - Assembly Plant Sector Palital, km 16 Highway Pto. Ordaz - El Tigre.

Mud Pump(s)	
Manufacturer	Baoji Oilfield Machinery Co., Ltd.
Model	(3) SET F-1600
Max. Input Horsepower	1,300 HP
Input Power	1 Motor AC 1200 KW VFD
Mud System	
Active (usable) Volume	Intermediate, Suction, Mixing, Return, Treatment. Total: 1600 Bls
Number of Tanks	7 Tanks (5 Active)
Shale Shaker	Mi-Swaco Mongoose Pro
Desander	Mi-Swaco 2-12 D-Sander
Destiller	Mi-Swaco 8T4 D-Silter
Vacuum Degasser	Mi-Swaco Compact Vaccum D-Gasser
Centrifuge	Mi-Swaco 518



- Pumping systems installed.
- It has all pumping lines Set of connected operating tanks, in good condition.
- In excellent condition

1500 HP Equipment - Assembly Plant Sector Palital, km 16 Highway Pto. Ordaz - El Tigre.

Mud Pumps & Mud System



## 1500 HP Equipment - Assembly Plant Sector Palital, km 16 Highway Pto. Ordaz - El Tigre.



- Generation systems assembled on site.
- It has total wiring.
- It has a set of main plants and an auxiliary generator.
- In excellent condition

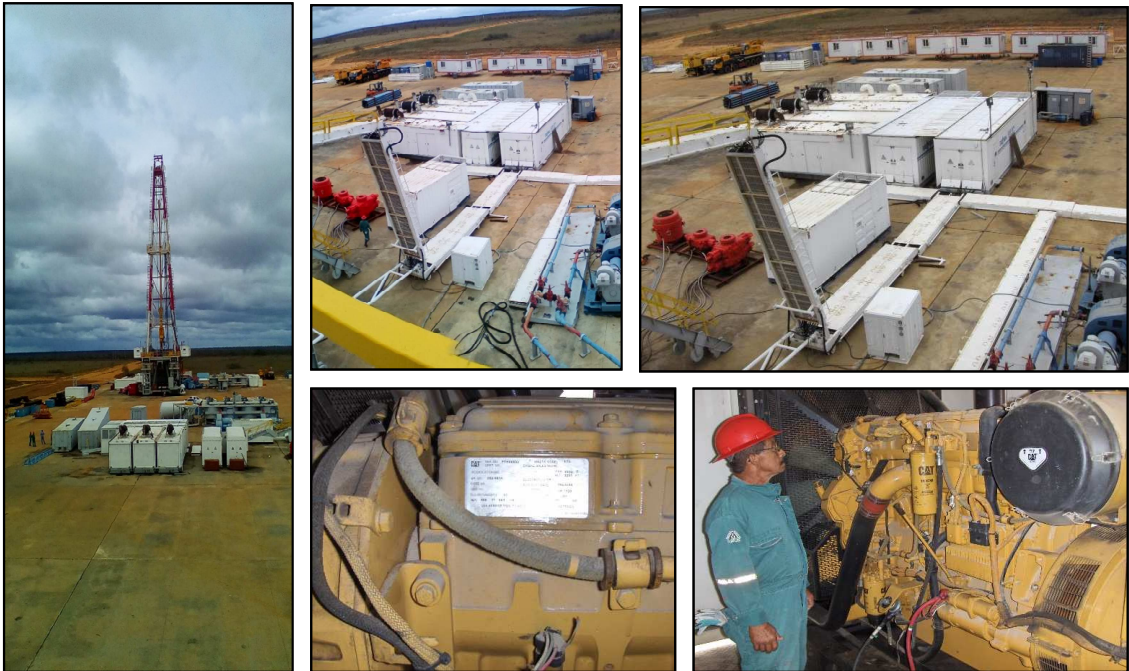
### Power Generation

Make	Caterpillar
Model	(3) SET CAT 3512B
Horsepower Rating	480V,320EKW
Kilowatt Rating	Generators 3 SR4B – 1750 KVA
Auxiliary Generator	CAT C15



# 1500 HP Equipment - Assembly Plant Sector Palital, km 16 Highway Pto. Ordaz - El Tigre.

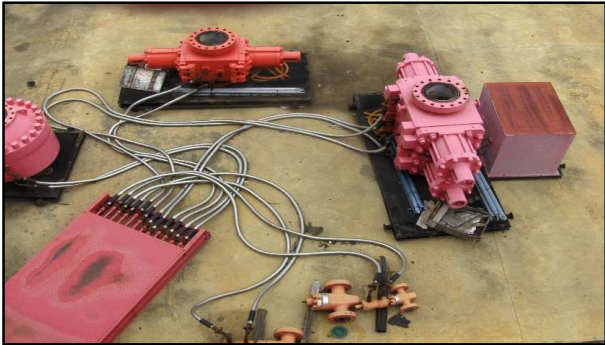
## Power Generation





1500 HP Equipment - Assembly Plant Sector Palital, km 16 Highway Pto. Ordaz - El Tigre.

Well Control





## 1500 HP Equipment - Assembly Plant Sector Palital, km 16 Highway Pto. Ordaz - El Tigre.



- Pipe in stacked place, close to each equipment.
- In excellent condition

### Tubulars

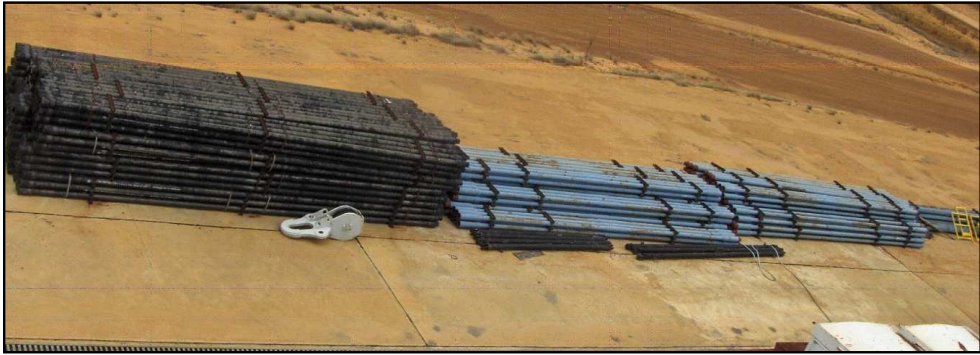
12,000' x 5", 19.5 lbs/ft, R-II, S-135  
3,500' x 3 ½", 13.30lbs/ft, RII, S-135

120 Joints x 5", 49.3 lbs/ft  
20 Joints x 3 ½" 25.3 lbs/ft

8" 6 ½" 4 ¾"

1500 HP Equipment - Assembly Plant Sector Palital, km 16 Highway Pto. Ordaz - El Tigre.

**Tubulars**



RIGS 1000 HP



Base SRL, Lechozal Highway, Anaco Edo. Anzoátegui.



1000 HP Equipment- Base SRL, Lechozal Highway, Anaco Edo. Anzoátegui.



- Masts are completely unassembled.
- They are in place, totally new, because they have never been assembled.

Mast RIG	
Make	Baoji Oilfield Machinery Co., Ltd.
Height	149 Ft
Static Hook Load	700,000 lbs
Drilling Line Size	1 ¼"

1000 HP Equipment- Base SRL, Lechozal Highway, Anaco Edo. Anzoátegui.

Mast RIG



1000 HP Equipment- Base SRL, Lechozal Highway, Anaco Edo. Anzoátegui.



- Substructure in excellent condition.
- Stacked in the SRL base.

Substructure	
Make	Baoji Oilfield Machinery Co., Ltd.
Type	Slingshot
Floor Height	29.5 Ft
Clear Height	25 Ft
Rotary Load Capacity	700,000 lbs
Setback Load Capacity	400,000 lbs



1000 HP Equipment- Base SRL, Lechozal Highway, Anaco Edo. Anzoátegui.

Substructure



1000 HP Equipment- Base SRL, Lechozal Highway, Anaco Edo. Anzoátegui.

**Drawworks**



- It is in place.
- Component in excellent condition.

**Drawworks**

Make	Baoji Oilfield Machinery Co., Ltd.
Model	JC-40DB
Input Power	Dos Motores AC, 600 KW Explosion Proof VFD
Horsepower Rating	1000 Hp

1000 HP Equipment- Base SRL, Lechozal Highway, Anaco Edo. Anzoátegui.

Drawworks





1000 HP Equipment- Base SRL, Lechozal Highway, Anaco Edo. Anzoátegui.

Travelling Assembly	
<b>Travelling Block</b>	Baoji Oilfield Machinery Co., Ltd.
Load Rating	700,000 lbs
<b>Swivel</b>	Baoji Oilfield Machinery Co., Ltd.
Load Rating	500.000 lbs
<b>Hook</b>	Baoji Oilfield Machinery Co., Ltd.
Load Rating	700,000 lbs
<b>Top Drive</b>	BPM
Load Rating	700,000 lbs
Max. Drill Torque	29502 lbs/ft
<b>Rotary Table</b>	Baoji Oilfield Machinery Co., Ltd.
Model	27 1/2" ZP275
Load Rating	1,000,000 lbs
Max. Drill Torque	27459N.m
Table Opening Size	27 1/2"



➤ Equipment packed in original skid.

1000 HP Equipment- Base SRL, Lechozal Highway, Anaco Edo. Anzoátegui.

Travelling Assembly



1000 HP Equipment- Base SRL, Lechozal Highway, Anaco Edo. Anzoátegui.

Mud Pump(s)	
Manufacturer	Baoji Oilfield Machinery Co., Ltd.
Model	(2) SET F-1300
Max. Input Horsepower	1,300 HP
Input Power	1 Motor AC 1200 KW VFD
Mud System	
Active (usable) Volume	Intermediate, Suction, Mixing, Return, Treatment. Total: 1600 Bls
Number of Tanks	7 Tanks (5 Active)
Shale Shaker	Mi-Swaco Mongoose Pro
Desander	Mi-Swaco 2-12 D-Sander
Destiller	Mi-Swaco 8T4 D-Silter
Vacuum Degasser	Mi-Swaco Compact Vaccum D-Gasser
Centrifuge	Mi-Swaco 518



- Pumping system uninstalled.  
Packed from origin.
- Totally new



1000 HP Equipment- Base SRL, Lechozal Highway, Anaco Edo. Anzoátegui.

Mud Pumps & Mud System



1000 HP Equipment- Base SRL, Lechozal Highway, Anaco Edo. Anzoátegui.



- On-site generation system.
- At the time of inspection they were completely sealed. It has total wiring.
- It has a set of main plants and an auxiliary generator. In excellent condition

#### Power Generation

Make	Caterpillar
Model	(3) SET CAT 3512B
Horsepower Rating	480V,320EKW
Kilowatt Rating	Generators 3 SR4B – 1750 KVA
Auxiliary Generator	CAT C15

1000 HP Equipment- Base SRL, Lechozal Highway, Anaco Edo. Anzoátegui.

Power Generation





1000 HP Equipment- Base SRL, Lechozal Highway, Anaco Edo. Anzoátegui.

Well Control	
Annular Preventer	Shanghai Shenkai Petroleum Equipment Co., Ltd.
Pressure Rating	5,000 psi
Opening Size	13-5/8"
Ram Preventer	Shanghai Shenkai Petroleum Equipment Co., Ltd.
Pressure Rating	5.000 psi
Opening Size	13-5/8"
Choke Manifold	Valvulas 4 1/16" x 5K PSI WP
Pressure Rating	5,000 psi
Size	4 1/16"
Accumulator	JYS21-25
Number of Stations	7 Stations
Total Volume	340 Gal
Pressure Rating	3,000 psi
Poor Boy	YQF-1200
Vessel Diameter	1200 mm



- Well control system packed since your arrival at the site.

1000 HP Equipment- Base SRL, Lechozal Highway, Anaco Edo. Anzoátegui.

Well Control



1000 HP Equipment- Base SRL, Lechozal Highway, Anaco Edo. Anzoátegui.



- Pipe in stacked place, close to each equipment.
- In excellent condition

**Tubulars**

12,000' x 5", 19.5 lbs/ft, R-II, S-135  
3,500' x 3 ½", 13.30lbs/ft, RII, S-135

120 Joints x 5", 49.3 lbs/ft  
20 Joints x 3 ½" 25.3 lbs/ft

8 " 6 ½" 4 ¾"

1000 HP Equipment- Base SRL, Lechozal Highway, Anaco Edo. Anzoátegui.

Tubulars





General observations 1000 HP and 1500 HP equipment Assembly Plant  
Sector Palital, km 16 Highway Pto. Ordaz - El Tigre.

- 04 Drills fully assembled.
- 01 Drill of 1000 HP, assembled 50%, was in the process of moving which deserves to undress the team, however Schlumberger staff says that the project was paused.
- Equipment in excellent condition.
- Tools and miscellaneous are sealed in metal boxes, they could not be opened by being welded, security measure taken by the staff of the plant.
- Equipment ready to start operating.

General observations 1000 HP Base SRL, Via Lechozal, Anaco Edo. Anzoátegui.

- 09 Drills completely disassembled.
- All the parts and components are distributed in the base. Most of the tools, minor and miscellaneous equipment are sealed in metal boxes, they could not be opened because they were welded, a safety measure taken by the personnel of the plant.
- Equipment must be assembled to start operating. Equipment in excellent condition.