



Manitowoc 2250 Series 1, 2 & 3 330 Ton

**rb RITCHIE BROS.**  
Auctioneers®

**Houston, TX**  
June 18–19, 2019 (Tue–Wed)

Unreserved public auction



2016 & 1 of 3 – 2015 Caterpillar 730C



2 of 6 – 2017 Volvo EC140EL – Low meter hours



2015 Caterpillar D6T LGP



2 of 5 – 2018 & 3 of 9 – 2017 Kenworth W900



2 – 2013 Caterpillar 815F2

ACCEPTING CONSIGNMENTS, CONTACT US NOW

[rbauction.com/Houston](http://rbauction.com/Houston)

# Houston, TX

June 18–19, 2019

Tue–Wed 8:00 am

Phone: **713.455.5200**

Fax: 713.455.5270

Auction location: 15500 Eastex Frwy,  
Humble, TX, 77396

## 2,000+ items & counting

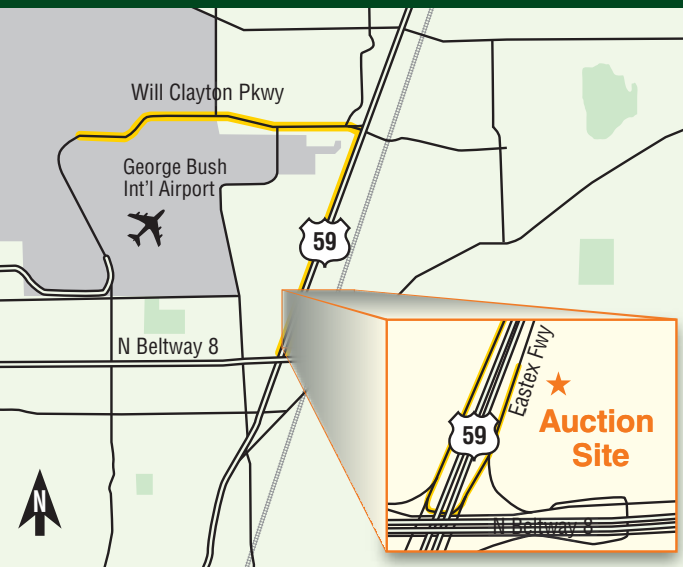
Bid in person or online

On-site registration starts: **Jun 16 (Sun)**

Inspection hours: **Mon–Fri, 8 am–5 pm**

Items must be removed by: **Jul 3 (Wed)**

Auctioneer Chad M. Johnson # 17668



### Car rentals

Take advantage of exclusive rental car discounts.

**AVIS code:** C039702 | **Budget code:** A062002

### Auction highlights

Trucks from the professionally-maintained fleet of: **Penske**



Equipment from:

**Coastal Plains Trucking, LLC**



**Double Oak Construction**



and other owners.

Visit **rbaction.com** for complete auction information



Full equipment listings, more photos and detailed equipment information



New additions to each auction – items added daily!



Deposit and payment information, including financing, wire transfer accounts and taxes



Full auction schedule, with times and lot numbers



Maps, hotels and other local services

### Auction notes

- ▶ Every item is sold 'as is, where is'
- ▶ International and online bidders – you may need to place a refundable deposit before you bid – check the auction details on our website for more information
- ▶ Transaction fee: (a) 10% on all Lots selling for \$10,000 or less, (b) 3.85% on all Lots selling for over \$10,000 up to \$33,500, with a minimum fee of \$1000 per Lot or, (c) \$1,290 on all Lots selling for over \$33,500.

### Directions to auction site

**From 59 coming from the North:** Exit Beltway 8 Frontage road exit, U-turn, stay on feeder to customer entrance. Deliveries turn right on Bender Rd just past customer entrance.

**From 59 coming from the South:** Exit Greens Rd. Customer entrance immediately on the right, deliveries just past customer entrance at Bender Rd.

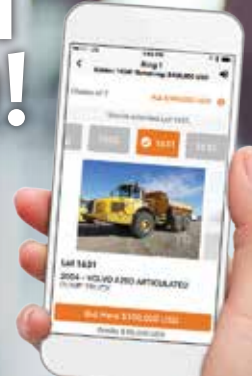
**From Beltway 8 coming from the East:** Stay on Beltway 8 Frontage road to 59N feeder. Follow to customer entrance. Deliveries to Bender Rd just past customer entrance.

**From Beltway 8 coming from the West:** Exit Lee Rd to 59N feeder to customer entrance, deliveries to Bender Rd just past customer entrance. left on Gore Rd. and proceed 1.5 miles to auction site.

# BID & BUY ON THE GO!

Download the Ritchie Bros. app today.

[rbaction.com/app](http://rbaction.com/app)



## Truck warranties

Trucks with this badge have passed a rigorous inspection and are eligible for additional limited warranty coverage powered by TruNorth.

Available on select trucks sold at Ritchie Bros.

[rbaction.com/warranty](http://rbaction.com/warranty)





Caterpillar 561M



John Deere 700J LGP w/Midwestern M540



2017 Case 750M WT



2015 Case 650L



2012 Caterpillar D6T LGP



2012 Caterpillar D6N LGP



Caterpillar D5M XL



2016 Caterpillar D4K2 XL



2015 Caterpillar D3K2 LGP





1 of 2 – 2014 Komatsu D65PX-17



2016 Komatsu D61PX-24



2011 Caterpillar 980H



2013 John Deere 544K



2015 Komatsu WA320-7



1 of 3 – 2012 Volvo L60G



1 of 2 – 2015 Bobcat T770



2017 Caterpillar 299D2 XHP



1 of 2 – 2016 Caterpillar 299D2 XHP





Doosan DX350LC-5



Hitachi ZX450LC



2012 Hitachi ZX250LC-5



John Deere 270CL



1 of 2 - 2011 Komatsu PC200LC-8



1 of 3 - 2015 Bobcat E35



2015 Bobcat E32



1 of 2 - 2013 Bobcat E26



1 of 4 - 2017 Caterpillar 303.5E2CR



1 of 2 - 2017 Caterpillar 303ECR



1 of 2 - 2017 Caterpillar 303ECR





5 of 16 – 2011 Case 580N 4x4



1 of 2 – 2017 Case 590SN 4x4



2014 Caterpillar 420F IT 4x4



1 of 3 – John Deere 310SG 4x4



2012 John Deere 310SK 4x4



2014 Komatsu HM300-3 & 2015 Komatsu HM300-5



Link-Belt RTC8090 90 Ton



Grove RT890E 90 Ton



1 of 3 – Grove RT880E 80 Ton 4x4



2012 Link-Belt RTC8030 Series II 30 Ton



2010 Link-Belt HTC8690 90 Ton



Terex T560-1 60 Ton





1 of 2 – 2013 & 1 of 2 – 2012 Terex RT670-1



1 of 2 – Terex RT665 65 Ton 4x4x4



Broderson RT300-2C 15 Ton 4x4x4



2012 Sany SR865 65 Ton 4x4x4



Lorain T340 40 Ton 6x4



Grove TM9120 120 Ton 8x4x4



Manitowoc 888





**Bomag BW213PDH3**



**Caterpillar CS56**



**2014 Voegelé 5100**



**Roadtec RX600E**



**2016 Tigercat 718E**



**Mack CH612 w/Hiab 099CLX**



**1 of 2 – 2015 Caterpillar TL1255C 12000 Lb**



**2012 Skytrak 8042 8000 Lb 4x4x4**



**Skytrak 6036 6000 Lb**





2015 Case IH Steiger 500



2013 Skytrak VR1056D 10000 Lb 4x4x4



2017 JCB 510-56 10000 Lb – Low meter hours



Caterpillar Challenger



John Deere 4920



2 of 14 – 2016 John Deere 5100E &  
2 of 14 – 2016 John Deere HX15 Shredders



1 of 2 – 2012 Massey Ferguson 2650



Atlas Copco ECM-720



2 – John Deere 2412E



2015 Morooka MST2200



New Holland TS110



Bauer Rainstar Irrigation Hose Reel



# Equipment listings

## Construction

**PIPELAYERS:** Caterpillar 561M Crawler • 3- Caterpillar D8K Crawler • 3- Caterpillar D8K Crawler w/Hyd Conversion • Caterpillar D8H Crawler w/Hyd Conversion • John Deere 700J LGP w/Midwestern M540.

**24- CRAWLER TRACTORS:** 2017 Case 750M LGP • 2015 Case 650L WT • Caterpillar D10R • 2015 Caterpillar D6T LGP • 2- 2014 Caterpillar D6T XW • 2012 Caterpillar D6T LGP • 2012 Caterpillar D6T XW • Caterpillar D6R LGP • Caterpillar D6R XL • 2012 Caterpillar D6N LGP • 2- 2016 Caterpillar D6K2 LGP • Caterpillar D5M XL • Caterpillar D5G LGP • 2016 Caterpillar D4K2 XL • 2015 Caterpillar D3K2 LGP • John Deere 650H • 2011 John Deere 450J • 2- 2014 Komatsu D65PX-17 LGP • 2016 Komatsu D61PX-24 LGP • Komatsu D38P-1 LGP • Komatsu.

**12- WHEEL LOADERS:** 2012 Case 621F • 2011 Caterpillar 980H • 2012 Caterpillar 924H • Caterpillar IT38G Integrated Tool Carrier • John Deere 624 • 2013 John Deere 544K • Komatsu WA380-6 • 2015 Komatsu WA320-7 • 2013 Komatsu WA320-6 • 2012 New Holland LW130 • Volvo L110E • 2013 Volvo L60G.

**12- SKID STEER LOADERS:** Bobcat 753 • 2014 Bobcat S650 • 2016 Bobcat S590 • Bobcat S250 • Bobcat S220 • 2012 Bobcat T190 • 2011 & 2010 Bobcat S160 • Bobcat S160 • Case 465 • Caterpillar 262C • 2018 Caterpillar 242D.

**25- MULTI TERRAIN LOADERS:** 2016 Bobcat T770 2 Spd Compact Track • 2015 Bobcat T770 Compact Track • 2013 Bobcat T750 Compact Track • 2012 Bobcat T650 Compact Track • Bobcat T630 • 2015 Bobcat T590 Compact Track • Bobcat T590 Compact Track • 2012 Bobcat T190 Compact Track • 2013 Bobcat T180 Compact Track • 2- Boxer 320 Walk Behind • 2017 Caterpillar 299D2 XHP Compact Track • 2- 2017 Caterpillar 299D2 Compact Track • 2- 2016 Caterpillar 299D2 XHP Compact Track • 2016 Caterpillar 289D 2 Spd High Flow Compact Track • Caterpillar 287B High Flow • Caterpillar 277C • Caterpillar 277B Compact Track • Caterpillar 247B • 2012 John Deere 323DT • 2017 Kubota SVL75-2 2 Spd Compact Track • Terex R070T Compact Track • 2012 Volvo MCT125C.

**MOTOR GRADERS:** Caterpillar 140 • Caterpillar 12E • Champion 710A.

**34- HYDRAULIC EXCAVATORS:** 2014 Case CX130C • Caterpillar 318C • Doosan DX350LC-5 • Hitachi ZX450LC • 2012 Hitachi ZX250LCC-5 • 2012 Hitachi ZX210LC-5N • 2- 2012 Hitachi ZX210LC-5 • Hitachi ZX200-3F • JCB JS145LC • John Deere 690D LC • 2014 John Deere 290G • John Deere 270CL • 2011 John Deere 200D LC • 2013 Kobelco SK485LC • 2- 2013 Kobelco SK350LC-9 • 2012 Kobelco SK260LC9 • Kobelco 235SR • Kobelco SK135SR • Komatsu PC220LC • 2012 & 2- 2011 Komatsu PC200LC-8 • Komatsu PC200LC-8 • Link-Belt 350X3 • Link-Belt 225 • 6- 2017 Volvo EC140EL • 2013 Volvo EC140DL.

**MIDI EXCAVATORS:** 2015 Caterpillar 314ELCR • 2013 Volvo ECR88.

**30- MINI EXCAVATORS:** 2012 Bobcat 324 • 2015 Bobcat E42 • Bobcat E42 • 3- 2015 Bobcat E35 • Bobcat E32i • 2- 2016 & 2015 Bobcat E32 • 2- Bobcat E32 • 2- 2013 Bobcat E26 • 2- 2017 Caterpillar 303ECR • 4- 2017 Caterpillar 303.5E2CR • 2- 2013 Caterpillar 303.5E • 2013 Caterpillar 303.5 • 2015 John Deere 27DX • 2011 Terex TC29 • Terex TC16-2 • 2012 Volvo EC55C • Volvo EC55B • 2012 Yanmar ViO35-5B • 2015 Yanmar VIO17.

**ARTICULATED DUMP TRUCKS:** 2016 & 2015 Caterpillar 730C • 2- 2015 Caterpillar 730C 6x6 • 2015 Komatsu HM300-5 • 2014 Komatsu HM300-3.

**DIRECTIONAL DRILLS:** Vermeer D18X22.

**BORING MACHINES:** 2013 McLaughlin 48 In. Cradle.

**32- LOADER BACKHOES:** Case 590SN • Case 590SN 4x4 • 16- 2011 Case 580N 4x4 • Case 580M • Case 580M Series 2 • 2014 Caterpillar 420F IT 4x4 • Caterpillar 420D 4x4 • Caterpillar 416E • 2012 John Deere 310SK 4x4 • 3- John Deere 310SG 4x4 • John Deere 310SE • 2012 John Deere 310J 4x4 • John Deere 310D • 2012 Terex TLB840PS 4x4 • Terex 760 4x4.

**38- ROUGH TERRAIN CRANES:** Broderson RT300-2C 15 Ton 4x4x4 • Grove RT9130E • Grove RT890E 90 Ton 4x4x4 • 2010 Grove RT890 90 Ton 4x4 • 2- 2010 Grove RT880E 4x4 • Grove RT880E 80 Ton 4x4 • Grove RT875C 4x4x4 • 6- Grove RT700E 60 Ton 4x4 • Link-Belt RTC8090 90 Ton 4x4x4 • Link-Belt 8060 60 Ton 4x4x4 • 2012 Link-Belt RTC8030 Series II 30 Ton 4x4x4 • 2012 Sany SRC865 65 Ton 4x4x4 • Terex RT780 • Terex RT780 80 Ton 4x4 • 3- Terex RT780 80 Ton • 2013 Terex RT670-1 • 2013 Terex RT670 70 Ton 4x4x4 • 2012 Terex RT670 • 2012 Terex RT670 70 Ton 4x4x4 • 2- Terex RT665 65 Ton 4x4x4 • 2013 Terex RT600 • Terex RT555 55 Ton 4x4x4 • Terex RT450 • Terex RT230 30 Ton 4x4x4 • 4- Terex RT230 • Terex CD225 25 Ton 4x4x4.

**HYDRAULIC TRUCK CRANES:** Grove TM9120 120 Ton 8x4x4 • Grove GMK5210 • 2010 Link-Belt 8690 90 Ton T/A T/A • 2- Link-Belt HTC8675 75 Ton T/A T/A • Lorain T340 40 Ton 6x4 • Terex T560-1 60 Ton T/A T/A.

**CONVENTIONAL TRUCK CRANES:** Link-Belt HC-78B.

**CRAWLER CRANES:** Manitowoc 2250 1 • 2 & 3 330 Ton Self-Erecting • Manitowoc 888.

**COMPACTORS:** 2- 2013 Caterpillar 815F Series II.

**VIBRATORY PADFOOTS:** Bomag BW213PDH3 • Caterpillar CP563E • Caterpillar CP563C • Dynapac CA152PD • Dynapac CA150PD • 2010 JCB VM115PD.

**VIBRATORY SMOOTH DRUM ROLLERS:** Caterpillar CS56 • 2- 2016 Hamm H11i • Ingersoll-Rand SD77DX .

**TANDEM ROLLERS:** Ingersoll-Rand DD130 • 2012 Multiquip AR13HA.

**ROLLERS:** Caterpillar PS150C 9 Wheel • Ingram 9-2800P 9 Wheel • Volvo PT240R 9 Wheel Pneumatic.

**12- WALK BEHINDS:** Mikasa MTX80 Jumping Jack • 3- Mikasa MTX70HD Jumping Jack • Multiquip MVC88VTHW Plate • Wacker

WP1550 Plate • 2016 Wacker RTLXSC3 Tandem Vibratory Padfoot Trench • 4- Wacker • Qty of Mikasa MTX70 Jumping Jacks.

**ASPHALT PAVERS:** 2014 Voegelé 5100.

**ASPHALT DISTRIBUTOR TRUCKS:** Sterling LT8500.

**PAVEMENT PROFILERS:** Roadtec RX600E.

**CONCRETE PAVERS:** Gomaco T600 Crawler Texture Cure Machine.

**PULVERIZERS & MIXERS:** Caterpillar RM300 Soil Stabilizer.

**FELLER BUNCHERS:** 2016 Tigercat 718E.

**ENVIRONMENTAL EQUIPMENT:** 2- Unused - 3 PTO Heavy Duty Wood Chipper • 2- Unused - Walk Behind Stump Grinder • Portable Brush Chipper • Barko 937 4X4 Mulcher • Qty of 2017 30 Ton Log Splitters.

**CONVEYORS:** ACS • 4- Unused - 2019 Better BE3660C 36 In. x 60 Ft Portable Radial Stacking Conveyor • 2- Unused - 2019 Vickwest PRS8532 32 In. x 85 Ft Portable Radial Stacking Conveyor.

**AGGREGATE EQUIPMENT:** 2- Unused - 2019 Paladin 32 In. x 6 Ft Permanent Suspended Belt Magnet.

**44- TELESCOPIC FORKLIFTS:** 2- 2015 Caterpillar TL1255C 12000 Lb 4x4x4 • 2014 Caterpillar TL943C 9000 Lb 4x4x4 • Caterpillar TH460B • Caterpillar TH460B 9000 Lb 4x4x4 • Genie GTH944 9000 Lb 4x4x4 • Genie GTH844 8000 Lb 4x4x4 • Genie GTH842 8000 Lb 4x4x4 • Gradall 544D-10 10000 Lb • Gradall 544D10 10000 Lb • Gradall 534D-9 9000 Lb 4x4 • Gradall 534D9 9000 Lb 4x4x4 • 2- Gradall 534D9 9000 Lb • 2017 JCB 510-56 10000 Lb 4x4x4 • 2013 & 2- 2012 JLG 10054 10000 Lb 4x4x4 • 2- JLG 10054 10000 Lb 4x4x4 • JLG 8042 8000 Lb 4x4x4 • 2- JLG 6042 6000 Lb 4x4x4 • Lull 944E42 9000 Lb 4x4 • 2013 Skytrak 10054 • 2012 Skytrak 10054 10000 Lb 4x4x4 • 2- 2012 & 2- 2011 Skytrak 10054 • 2- 2011 Skytrak 10054 10000 Lb 4x4x4 • Skytrak 10054 10000 Lb 4x4x4 • Skytrak 9038 • 2012 Skytrak 8042 • 2012 Skytrak 8042 8000 Lb 4x4x4 • 2011 Skytrak 8042 • 2011 Skytrak 8042 8000 Lb 4x4x4 • 2012 Skytrak 6042 • 2012 Skytrak 6042 6000 Lb 4x4x4 • 2011 Skytrak 6042 • Skytrak 6036 6000 Lb 4x4x4 • 2013 Skytrak VR1056D 10000 Lb 4x4x4 • Terex SS644C 6000 Lb 4x4x4.

**ROUGH TERRAIN FORKLIFTS:** 2014 Case 586G 6000 Lb 4x4 • 3- JCB 930.

**16- FORKLIFTS:** Caterpillar T50D • Clark CY180S 18000 Lb • 2011 Doosan G35S5 • 2010 Doosan D25S5 5000 Lb • Hyster H230XL • 2015 Hyster H120FTPRS 12000 Lb • 2014 Hyster H120FT 12000 Lb • Nissan CPH02A25V • Toyota 425FG25 5000 Lb • Toyota TFGU25 • 2013 • 2- 2012 & 2010 Toyota 8FGU25 • Toyota 8FDU25 5000 Lb • Toyota 7FGCU45BCS.

**ELECTRIC FORKLIFTS:** Raymond RT35TT 3500 Lb • 2011 Toyota 7FBEU20 • 2013 Yale ESC030AC.

**SCISSORLIFTS:** Genie GS3246 Electric • Genie GS2668 • Genie GS2632 Electric • 2012 Genie GS1930 Electric • JLG 4394RT • JLG 2646ES Electric • 2014 Skyjack SJIII3219 Electric • Skyjack SJIII3219 Electric.

**29- BOOM LIFTS:** GENIE S125 • 2013 Genie S60X 4x4 • Genie Z45/25 4x4 Articulated • Genie Z45 • Genie Z34/22 4x4 Articulated



lated • 2- Genie TZ34 Tow Behind • Hyster R30XMS3 Electric Personnel Lift • 2010 JLG 1250AJP 4x4x4 • 5- 2010 JLG 1230ES Electric Personnel Lift • 2- JLG 1230ES Electric Personnel Lift • JLG 600S • JLG E450AJ Electric Articulated • 2- JLG 400S • 8- JLG 400S 4x4 • JLG E300AJ Electric Articulated.

**4WD AGRICULTURAL TRACTORS:** Case 280 • 2015 Case IH Steiger 500.

**BELTED AGRICULTURAL TRACTORS:** Caterpillar Challenger.

**16- MFWD AGRICULTURAL TRACTORS:** 14- 2016 John Deere 5100E • John Deere 4920 • Kubota.

**2WD AGRICULTURAL TRACTORS:** 2- 2012 Massey Ferguson 2650 • New Holland TS110.

**UTILITY TRACTORS:** 3- Kubota BX25DLB-R.

**BALERS:** New Holland 850 Round.

**16- MOWERS:** Bush Hog 255R2 Tractor • 14- 2016 John Deere HX15 Shredder • Rhino TURBO120 10 Ft.

**16- PULL SCRAPERS:** 2- John Deere 2412E • Miskin SPC24 17 CY • 3- Miskin SPC17 17 CY • Miskin SP17 17 CY • Miskin 17 CY • Reynolds 160E 16 CY Ejector • Reynolds 100 • Reynolds 15.5 CY Ejector • 3- Reynolds 15.5 15.5 CY Ejector • Reynolds 10C • Rome 15.5 CY.

**LANDSCAPE EQUIPMENT:** Craftsman Lawn Mower.

**ALL TERRAIN VEHICLES:** 2015 & 2014 Morooka MST2200 Crawler Dumper.

**BROOMS:** Broce RJ350 • Broce H20 • Lay-Mor SM300 • Rosco RB48 • 2- Rosco.

**STREET SWEEPERS:** Allianz.

**RECREATIONAL VEHICLES:** 2011 Forest River Ridge Travel Trailer • Holiday Rambler Motor Home.

**UTILITY CARTS:** 2011 Bobcat 3400D • Kawasaki KAF620MFF • Kawasaki 610 Vehicle.

**CHIP SPREADERS:** Etnyre.

**COMMERCIAL VESSELS:** 4 In. Stainless Steel Dredge • VMI 6 In. Dredge.

**DRILLS:** Atlas Copco ECM-720.

**24- AIR COMPRESSORS:** 2- Airman MMD • 2012 Atlas Copco XAS750 • 2- 2011 Atlas Copco XAS375 Portable • 2013 & 2012 Atlas Copco XAS185JD • Atlas Copco • Campbell 80 Gallon Electric • 2011 Doosan P185WYM • 2016 Doosan P185WDOT4F Portable • 2016 Doosan P185WDOT4F Portable • 2014 Doosan • Gardner-Denver ADL1001 Electric Skid Mounted • Husky • Ingersoll-Rand 2545E10 120 Gallon Electric • Ingersoll-Rand HPW825 Portable • Ingersoll-Rand P185WJD Portable • Kobelco KNW2DKD • Sullair 375HDJD Portable • Sullair 185DPQPPR Portable • Worthington • 150 PSI • 30 Gallon.

**INDUSTRIAL GENERATOR SETS:** Caterpillar SR4 415 KW Skid Mounted Stand-By • Onan 2500DFM17R22368 250 KW.

**GENERATOR SETS:** Briggs • Vox VXG6500.

**CONSUMER GENERATOR SETS:** Powertek.

**21- LIGHT GENERATOR SETS:** Baldor TS1753J 150 KW Skid Mounted Stand-By • 2012 Caterpillar APS152 Portable • 2012 Caterpillar APS151 Portable • 2012 Caterpillar APS150 Portable • Cummins DSAE7252077 80 KW • Cummins DSE7092869 80 KW • Cummins M11-G2 • 2- 2013 Cummins QSB7G6 • Forster Enterprises MEP007B 100 KW Portable Military • FPT International F4GE9455A • Iveco 8035SRU • Magnum MMG20G • 2011 Multiquip DCA300 • 2014 Multiquip DCA70SSJU41 56 KW Portable • 2014 Multiquip DCA25SSIU3C • Onan 200DFAA 200 KW • SDMO 21 KW Portable • Stewart & Stevenson • 2013 Taylor TR130 • 15 KW Portable.

**17- LIGHT TOWERS:** 5- 2014 Allmand Bros. Maxi-Lite II Portable • 2014 Magnum MLT4060MV Portable • 4- 2014 & 2013 Magnum MLT4060K Portable • Magnum MLT4060K • 2017 & 2011 Magnum MLT3060K Portable • 2- Terex Amida AL4000 Portable • Wacker LT4 Portable.

**21- WELDERS:** 2014 Lincoln Vantage 500 • 2014 Lincoln Vantage 500 Portable • 2013 Lincoln Vantage 500 Skid Mounted • Lincoln SA250 Skid Mounted • Lincoln SA200 Skid Mounted • 2012 Lincoln Electric Vantage 400 • 2012 Lincoln Electric Activ 8 • Miller Big Blue 700 Du • Miller • 2010 Miller Electric Trailblazer 302 • Miller Electric EX300 • 4- 2015, 2013 & 3- 2012 Miller Electric 12RC • Miller Electric 12RC • 2014 Millerlec Big Blue 300.

**PUMPS:** 2- WM60 Centrifuge 414 • JetStream 4200UNX Skid Mounted Triplex • Qty of Vogelsang CP20 Feed • Qty of 3 VGH6 High Pressure • Qty of Pumps.

**CONCRETE PUMPS:** Mayco ST-45TDRM.

**CONCRETE EQUIPMENT:** MMX2190 Mixer • Qty of Power Trowels • Qty of Unused - Mustang CV3500 Vibrators • 3- Portable Mixer • 2- Gwalker CNGV2 Vibrators • 3- Unused - 2019 Multi-H R1S Portable Mixer • Multiquip WM93PHS Mortar Mixer • Razor Back Ride On Power Trowel • Whiteman 36 In. Walk Behind Power Trowel.

**CONTAINER EQUIPMENT:** 20 Ft Container.

**INDUSTRIAL PLANT EQUIPMENT:** 2014 Farrow Systems F650MAX Abrasive Blasting System • Hudson Machinery F63HS 25 Ton Hydraulic Press • 8- 2015 Koike Aronson Auto Picle S Motorized Oxy-Fuel Pipe Air Plasma Cutter • 2015 Koike Aronson Auto Picle-S Motorized Oxy-Fuel Pipe Air Plasma Cutter.

**DRILL PARTS & ACCESSORIES:** Foster 58-93R Power Tong • Unused - 2019 Suihe UMTRCB3F 36 In. Core Barrel • Unused - 2019 Suihe UMTCA3F Double Cut Conical Rock Auger.

**CRANE ACCESSORIES:** HLX24200T003 200 Ton Hook • WLL 300 Ton Shackle • Qty of Wire Cable Slings • Qty of Balls & Block • Qty of Sling • Crane Man Basket • Manitowoc 2250 190 Ft Luffing • Manitowoc 888 170 Ft Luffer & Jib.

**ITEMS INCLUDE:** Equipment, Construction & Transportation Attachments • Shop & Warehouse Items • Parts & Stationary Items - Construction & Transportation.

# WIN YOUR WHEELS

ENTER FOR A CHANCE TO WIN A BRAND NEW KUBOTA SIDE BY SIDE!



## Drive away with a Kubota RTV-XG850!

We're making the summer auction season even more exciting with our Win Your Wheels contest. And there are multiple ways to enter for a chance to win – no purchase necessary.

**Don't miss out – sweepstakes closes July 31, 2019!**

See details and enter at:

[rbauction.com/winyourwheels](http://rbauction.com/winyourwheels)

No purchase necessary. Open to US and Canadian residents (except New York, Florida and Quebec). Total prize value USD\$30,000 (2 x prizes). Entries must be made between 5:00AM Pacific time on June 1, 2019 and 11:59PM Pacific time on July 31, 2019. Complete sweepstakes rules and regulations visit [rbauction.com/winyourwheels](http://rbauction.com/winyourwheels)





2018 Mack GU713



2017 Kenworth W900



2012 Western Star 4900SBA Tri Drive



Unused – 2019 Choice 355DN 55 Ton



3 – Unused 2019 GTC 130 Barrel

Driving choice. 

# Unreserved public truck auction

Houston, TX | June 19, 2019 (Wednesday)



2015 Mack MR688S w/Putzmeister 40Z





Kenworth W900 Winch



Mack CTP713



2016 & 1 of 3 – 2015 Caterpillar CT660S



2016 Freightliner PX125064ST



1 of 3 – 2014 Freightliner X12564ST Cascadia



1 of 2 – 2017 Freightliner Cascadia Evolution



1 of 2 – 2014 Freightliner Cascadia



1 of 2 – 2013 Mack GU713 Winch



2010 Kenworth W900





2016 Kenworth T800



2010 Kenworth T800



Kenworth T800



Kenworth T800



2014 Kenworth T680



2014 Kenworth T680



1 of 3 – 2012 Kenworth T660



2014 Peterbilt 389



1 of 2 – 2012 Peterbilt 388



Peterbilt 379



1 of 2 – 2012 Peterbilt 567



Volvo VNL



5 of 62 – 2012 Peterbilt 365



1 of 2 – 2011 Kenworth T800



1 of 2 – Peterbilt 357 w/McNeilus





1 of 2 – Mack MR688S w/Putzmeister M40Z



International 7600 Air Mover



Mack RD690S



2012 Peterbilt 367 w/GapVax



3 of 16 – 2011 Sage Oil 17397 Fuel & Lube



3 – Freightliner M2106



Mack GU700



2015 Caterpillar CT660S Rolloff



Mack GU713 Rolloff



Peterbilt 335 Fuel & Lube



International 7600 Laydown



2010 International 4300SBA DuraStar



Aspen HHT-RL 75



2018 Brazos 55T-26WLB 55 Ton



Choice 60 Ton





Fontaine TH55-0426 55 Ton



2013 Kalyn/Siebert FGO560 70 Ton



Kalyn/Siebert LBO560 75 Ton



Kalyn/Siebert LBO460T 60 Ton



Load King 55 Ton



Rogers CT4WHPG100D22-2 100 Ton



1 of 4 - 2014 Reitnauer 53 Ft Aluminum



1 of 3 - 2015 Carmex TV1000



Eager Beaver 60GLS



1 of 4 - 2017 CTS BDT40 40 Ft



Clement RKHL3226 Round Bottom



2019 Wilson DWH651PM 43 Ft



2013 Manac 3A240A000 Grain



2012 Southern 130 Barrel



1 of 4 - 2011 Keystone MSB4000 Sand King



# Equipment listings

## Transportation

**16- WINCH TRACTORS:** Kenworth W900 Tri/A • 2011 Kenworth T800 T/A • 2- 2013 Mack GU713 • Mack CTP713 T/A • Mack • Peterbilt 379 Tri/A • Peterbilt 379 Tri/A Sleeper • 3- Peterbilt 379 • 2012 Peterbilt 367 T/A Sleeper • 2012 Peterbilt 365 T/A • Peterbilt 357 • Peterbilt • Volvo.

**BED & RIG-UP TRUCKS:** 2013 Ford F450 4x4 • Kenworth C500 Bed • Mack • 2013 Peterbilt 367 Bed.

**300- TRUCK TRACTORS:** 2016 & 2015 Caterpillar CT660S Day Cab T/A • 2- 2015 Caterpillar CT660 Day Cab T/A • 2016 Freightliner PX125064ST Sleeper T/A • 2- 2014 Freightliner PX125064ST Cascadia Sleeper T/A • 2013 Freightliner PX125064ST Cascadia Day Cab S/A • 3- 2013 Freightliner PX125064ST Cascadia Day Cab T/A • 7- 2013, 3- 2012 & 2- 2011 Freightliner PX125064ST Cascadia Sleeper T/A • Freightliner PX125064ST Cascadia Day Cab T/A • Freightliner ST120064ST Sleeper T/A • Freightliner CL120064S T Sleeper T/A • Freightliner CL120064ST Columbia Sleeper T/A • 2012 Freightliner PX113064ST Cascadia Sleeper T/A • 2- 2010 Freightliner PX113064ST Cascadia Day Cab T/A • 2- 2016 Freightliner X12584ST Tri/A • 2015 Freightliner X12564ST Sleeper T/A • 2014 Freightliner X12564ST T/A • 2014 Freightliner X12564ST Cascadia Sleeper T/A • 6- 2014 Freightliner X12564ST Sleeper T/A • 2013 Freightliner X12564ST Cascadia Sleeper T/A • 5- 2013 Freightliner X12564ST T/A • 9- 2013 Freightliner X12564ST Sleeper T/A • 2012 Freightliner X12564ST Cascadia Sleeper T/A • 2- 2013 & 2012 Freightliner X12542ST S/A • 2014 Freightliner CA125SLP Sleeper T/A • Freightliner CST120 Sleeper T/A • Freightliner Columbia 120 T/A • Freightliner CL120 T/A • Freightliner CL120 Cascadia Sleeper T/A • Freightliner CL120 Columbia Day Cab S/A • 2011 Freightliner Coronado Sleeper T/A • Freightliner Columbia Sleeper T/A • 2- Freightliner Columbia Sleeper T/A • Freightliner Columbia Columbia T/A • Freightliner Columbia T/A • 2- 2014 & 5- 2012 Freightliner Cascadia Sleeper T/A • 2- 2017 Freightliner Cascadia Evolution Sleeper T/A • 3- 2013 Freightliner Cascadia T/A • 2012 Freightliner T/A • 2- Freightliner T/A • International 9900I Day Cab T/A • 2- International 9400I Sleeper T/A • 2- International 9200I Sleeper T/A • International 8600 Day Cab S/A • International 8600 Sleeper T/A • 2016 International ProStar+122 Sleeper T/A • 2014 International ProStar+122 T/A • 2014 International ProStar+113 Sleeper T/A • 2014 International Transtar Day Cab S/A • 2014 International ProStar Sleeper T/A • 2- 2013 International ProStar Sleeper T/A • 2011 & 2010 International ProStar Premium Sleeper T/A • International ProStar Premium Sleeper T/A • 2016 International ProStar+ Sleeper T/A • 3- 2014 International ProStar+ Sleeper T/A • 2- 2013 International ProStar+ Sleeper T/A • 2- 2013 International ProStar+ Sleeper T/A • 2- 2014 International ProStar+ Day Cab T/A • 2012 International ProStar+ Day Cab T/A • 2012 International ProStar+ Day Cab T/A • 2- International T/A • Kenworth T2000 Sleeper T/A • 5- 2018 Kenworth W900 Day Cab T/A • 2017 Kenworth W900 Sleeper T/A • 9- 2017 & 2016 Kenworth W900 Day Cab T/A • 2011 & 2010 Kenworth W900 Sleeper T/A • 2014 Kenworth T880 T/A • 2016 & 2011 Kenworth T800 Sleeper T/A • Kenworth T800 Day Cab Tri/A • 2016 & 2014 Kenworth T680 Sleeper T/A • 2- 2015 Kenworth T660 Sleeper

T/A • 2013 Kenworth T660 Day Cab T/A • 2013 Kenworth T660 Sleeper T/A • 2012 Kenworth T660 6x2 Sleeper T/A • 5- 2012 & 2011 Kenworth T660 Sleeper T/A • Kenworth T600 Sleeper T/A • 2014 Mack GV713 T/A • 2013 & 2- 2012 Mack CXU613 Day Cab T/A • Mack CXU613 Day Cab T/A • Mack CXU613 Sleeper T/A • Mack CXN613 T/A • 2- Mack CXN613 Day Cab T/A • 2- Mack CXN613 Sleeper T/A • 7- Mack CX613 T/A • 2015 Mack CHU613 Day Cab T/A • 2014 Mack CHU613 Sleeper T/A • 2013 Mack CHU613 Day Cab T/A • Mack CHN613 S/A • Mack Day Cab T/A • Mack T/A • 2014 & 2012 Peterbilt 587 Sleeper T/A • 2014 Peterbilt 389 Day Cab T/A • 2- 2012 Peterbilt 388 Sleeper T/A • Peterbilt 387 Sleeper T/A • 2012 & 2011 Peterbilt 386 T/A • Peterbilt 379 Tri/A • Peterbilt 379 Day Cab T/A • Peterbilt 378 Day Cab T/A • 2- 2013 Peterbilt 367 Day Cab T/A • 2012 Peterbilt 367 T/A • 2012 Peterbilt 367 Sleeper T/A • 2011 Peterbilt 367 Day Cab T/A • 2014 Peterbilt 365 Sleeper T/A • 3- 2012 Peterbilt 365 Day Cab T/A • 26- 2012 Peterbilt 365 Sleeper T/A • 32- 2012 Peterbilt 365 T/A • 2011 Peterbilt 365 Day Cab T/A • 2011 Peterbilt 365 Sleeper T/A • 2- 2011 Peterbilt 365 T/A • Peterbilt 365 Sleeper T/A • 2011 Peterbilt Sleeper T/A • Sterling L8500 Day Cab T/A • 2- 2014 & 2013 Volvo VNL64670 Sleeper T/A • 7- 2013 Volvo VNL64630 Sleeper T/A • 2015 Volvo VNL64300 Day Cab T/A • 2013 Volvo VNL64300 T/A • 2013 Volvo VNL42300 Day Cab S/A • 8- 2015 Volvo VNL780 T/A • 2014 & 2013 Volvo VNL780 Sleeper T/A • 2013 Volvo VNL670 Sleeper T/A • 2012 Volvo VNL64 Sleeper T/A • Volvo WCA Day Cab T/A • Volvo VN Sleeper T/A • Volvo VNM Day Cab S/A • 2- Volvo VNL Sleeper T/A • 2012 & 2011 Volvo Sleeper T/A • Volvo Day Cab S/A • 2012 Western Star 4900SA T/A • 2012 Western Star 4900SA Tri Drive Day Cab Tri/A • Western Star 4900FA Tri/A • Freightliner Columbia T/A • International 9400I Sleeper T/A • 2012 International ProStar+ Sleeper T/A • 3- 2013 International ProStar T/A • International Day Cab T/A • 2013 Kenworth T800 Sleeper T/A • 2010 Kenworth T800 Tri/A • Kenworth T800 Tri/A • Mack GU713 T/A • Peterbilt 387 Sleeper T/A • 2012 Peterbilt 365 T/A.

**QUAD AXLE DUMP TRUCKS:** 2015 Freightliner 108SD.

**DUMP TRUCKS:** Chevrolet Chevrolet 7500 S/A • Freightliner M2 Business Class T/A • 2018 Mack GU713 Tri/A • Mack DM686S Tri/A • Mack CH613 T/A • Mack CH613 Tri/A • Peterbilt 379 T/A • Sterling LT7 T/A • Western Star T/A.

**MIXER TRUCKS:** 2011 Kenworth T800 • Kenworth T800 • Peterbilt 357 • Peterbilt 357 T/A • Volvo VHD T/A • Volvo VHD.

**CONCRETE PUMP TRUCKS:** 2015 Mack MR688S T/A • 2- Mack MR688S.

**WATER TRUCKS:** Chevrolet Kodiak 2200 Gallon S/A • Ford LN8000 2000 Gallon S/A • 2011 Ford F750 • Ford F750 XL 2000 Gallon S/A • Mack 3500 Gallon T/A.

**TANK TRUCKS:** 2013 International 4300.

**BUCKET TRUCKS:** Ford F450 • Ford F450 w/Versalift SST37NE • GMC C5500 S/A w/Altec AT235.

**BOOM TRUCKS:** 2011 Ford F550 • 2013 Ford F450 • Ford F350 • International 7500 • Mack CH612 S/A w/Hiab 099XLX • 2013 Peterbilt 367 NBT45-127.

**11- VACUUM TRUCKS:** Ford L8000 S/A • Ford L8000 S/A w/Vactor 810 • Ford 8000 S/A • International 7600 Guzzler NX • International 7600 T/A Guzzler • International 4400 • 2- Mack RD690S T/A • 2012

Peterbilt 367 Tri/A • Sterling L9500 T/A • Sterling Vactor 2100 • International 7600 w/ Vactor 2100.

**12- FUEL & LUBE TRUCKS:** Ford F450 XL Flatbed • Peterbilt 335 S/A Fuel & Lube • 2011 Sage Oil 17397 Gooseneck T/A Gooseneck Lube • 5- 2011 Sage Oil 17397 T/A Gooseneck Fuel & Lube • 2010 Sage Oil 17256 T/A Gooseneck Fuel & Lube • 2010 Sage Oil 17256 T/A Gooseneck Lube • 2- 2010 Sage Oil 11256 T/A Gooseneck Fuel & Lube.

**20- MECHANICS TRUCKS:** 2012 Chevrolet Silverado 2500H • Ford F650 Dually • Ford F650 XL • 3- 2013 & 2012 Ford F550 XL Crew Cab 4x4 • 2011 Ford F550 • Ford F550 Service • 2012 Ford F350 • 2012 & 2011 Ford F350 Super Duty • 2011 Ford F350 XLT Crew Cab 4x4 • 2012 Ford F250 XL 4x4 • Freightliner M2 Business Class • International 4900 S/A • International 4400 S/A Service • 2015 International • Sterling LT9500 • Sterling M7500 • 2011 Ford F550 • Isuzu NPR.

**REEFER TRUCKS:** International 4300 DuraStar S/A • 2010 Isuzu NRR S/A.

**UTILITY TRUCKS:** 2013 Chevrolet 3500 Crew Cab 4x4 Dually • 2015 Ford F350 XL Crew Cab 4x4 • 2011 Ford F350 XL Extended Cab 4x4 • Ford F250 4x4.

**ROLLBACK TRUCKS:** Freightliner M2 Business Class T/A.

**22- VAN TRUCKS:** 2010 Chevrolet Express 3500 • Chevrolet CT3500 • Freightliner SC8000 COE T/A • 2016 Freightliner M2106 • 2012 Hino 268 S/A • Hino S/A • International 4300M7 DuraStar S/A • 2014 & 2- 2013 International 4300 S/A • 2012, 2- 2011 & 2- 2010 International 4300 DuraStar S/A • 2- International 4200 S/A • 2013 Isuzu NQR COE S/A • 2012 Isuzu NPR COE S/A • 2016 Isuzu NPR COE • 2011 Mercedes-Benz • 2012 Mitsubishi Fuso FE160 S/A • 2012 International 4300SBA.

**SANITATION TRUCKS:** 2- CCC Low Entry T/A Side Load • Freightliner M2106 T/A Rear Load Garbage • 3- Freightliner M2106 T/A Rear Loader Garbage.

**TOW TRUCKS:** Chevrolet 3500 SLE • 5 Ton 6x6.

**ROLLOFF TRUCKS:** 2015 Caterpillar CT660S T/A • Mack GU713 Tri/A • Volvo.

**CAB & CHASSIS TRUCKS:** Ford F650 XL S/A • Ford F600 S/A • Ford F550 XL Crew Cab • 2012 Hino 338 S/A • 2014 International S/A • Kenworth T400 • Mack RD688S T/A • International 4900.

**19- FLATBED TRUCKS:** Chevrolet C5500 • 2011 Chevrolet 3500 Crew Cab 4x4 Dually • Chevrolet 3500 • 2011 Dodge 4500HD 4x4 • Dodge 3500 Crew Cab 4x4 • Ford F750 • Ford F650 Dump • 2- 2013 Ford F350 XL Crew Cab 4x4 • Freightliner M2 S/A • GMC C6500 • GMC 3500HD • GMC C7H042 • International 4700LP S/A • Mack CX613 • Mitsubishi Fuso FE649 • Nissan UD1200 S/A • 2015 Ram 3500HD Crew Cab 4x4 • 2013 Ram 3500 Crew Cab 4x4 • Ford F350.

**EMERGENCY VEHICLES:** Oshkosh P19 4x4 Fire Truck.

**11- TRUCKS:** Ford LS8000 Grapple • 2011 Ford E450 Chemical • GMC C6500 S/A Attenuator • International 7600 T/A Laydown • International 4700 Chip • International 4700 S/A Chip • International 4300 SS/ABA S/A • 2010 International 4300 SBA DuraStar S/A Attenuator • Mack CX T/A Laydown • 2- Peterbilt Chip • Mack RD688S T/A Kill.

**SPORTS UTILITY VEHICLES:** Chevrolet Suburban • Dodge Nitro • 2014 Jeep Compass AWD • Lincoln Navigator.



**55- PICKUPS:** Chevrolet 3500HD Crew Cab 4x4 • 2013 Chevrolet 2500HD Extended Cab 4x4 • 2012 Chevrolet 2500HD Extended Cab • 2013 & 2011 Chevrolet 2500 Crew Cab 4x4 • 2011 Chevrolet 2500 LT Crew Cab 4x4 • Chevrolet 2500 Crew Cab • Chevrolet 2500 Silverado Extended Cab • Chevrolet 1500 • 2011 Dodge 1500 Crew Cab 4x4 • 2010 Dodge 1500 • Dodge 1500 • 2010 Dodge Ram 1500 • Dodge Ram 1500 Crew Cab • Dodge Ram 1500 Crew Cab 4x4 • Ford F350 • Ford F350 Crew Cab 4x4 • 2012 Ford F250 XLT Crew Cab 4x4 • 2016, 2- 2014, 3- 2013 & 2- 2012 Ford F250 XL Crew Cab 4x4 • 2013 Ford F250 XL Crew Cab • 4- 2015 & 2011 Ford F250 Crew Cab 4x4 • 2017 Ford F150 XL Extended Cab 4x4 • 2014 Ford F150 • 2014 Ford F150 Crew Cab • 2013 Ford F150 • 2013 Ford F150 Crew Cab 4x4 • 3- 2013 Ford F150 XL Crew Cab 4x4 • 4- 2013 Ford F150 XL • 2012 Ford F150 XL Crew Cab 4x4 • 2- 2012 Ford F150 XL • Ford F150 • Ford F150 Crew Cab • Ford F150 Extended Cab • Ford F150 Lariat Crew Cab 4x4 • 2012 GMC 2500 Sierra Crew Cab 4x4 • Mazda B2300 • 2014 Ram 3500 Crew Cab 4x4 • 2015 Ram 1500 Crew Cab • Ford F350 King Ranch Crew Cab 4x4 • 2010 Ford F150.

**BUSES:** Bluebird Vision 36 Passenger S/A 28 Ft School • Chevrolet Express 3500 Crew Carrier • 2- 2011 Ford E450 Shuttle • 2- IC Corp RE300 46 Passenger S/A 35 Ft School • IC Corp. CE300 40 Passenger S/A • International 45 Passenger S/A School.

**AUTOMOBILES:** Drag Race Car and Trailer • 2010 Chevrolet Malibu 1 LT • 2- 2015, 2014, 2- 2013 & 2012 Ford Fusion • Nissan Maxima GLE • 2010 Toyota Camry XLE.

**18- LOWBOYS:** Aspen HHT/RL 75 Ton 5/Axle Oilfield • Unused - 2019 Choice 355DN 55 Ton Tri/A • Choice 60 Ton Quad/A Oilfield • 2011 Dragon 75 Ton 5/Axle Oilfield • Eager Beaver • Fontaine Double Drop • Heavy Haul • Holden • 2013 Kaly/Siebert FG0560 70 Ton 5/Axle Oilfield • Kaly/Siebert LBO460T 60 Ton Quad/A Oilfield • 2013 Kaly/Siebert • Kaly/Siebert • Load King Tri/A • Rogers CT4WH-PG100D22-2 100 Ton Quad/A • Schw • Talbert T3DW50SAHRG1T1 51 Ton Tri/A • Trail-Eze • VIMC Tri/A • Brazos 55T26WLB 55 Ton • Fontaine TH550426 55 Ton Tri/A • Fontaine 60 Ton T/A.

**13- STEP DECK TRAILERS:** 6- Chaparral 48 Ft T/A Aluminum Spread Axle • Fontaine T/A • Kaly Siebert KDP26 48 Ft T/A • 2011 Towmaster T70RG 35 Ton 102 In. T/A Steel • Trailmobile • Transcraft 53 Ft Spread Axle • 2016 Transcraft FS2CDHA 53 ft T/A spread axle • Viking T/A.

**JEPS:** Kaly/Siebert KD50 T/A • Kaly/Siebert Booster • 20 Ton T/A • Font Pin On Steerable Booster • 2- Fontaine Pin On Booster • Fontine 23 In Booster • Pennsylvania Specialized 20 Ton T/A.

**20- HIBOYS:** 2015 Clark CFBT2015 48 Ft T/A • Fontaine FTW58048S-LAW 48 Ft T/A • Fontaine 48 Ft Steel Spread Axle • Great Dane GPM5248102 48 Ft x 102 In. T/A Steel • 2- 2015 Great Dane • Manac 10248801 48 Ft T/A • Manac 10248101 48 Ft T/A • Manac 1024801 48 Ft T/A Steel B-Double Lead • Reitnouer 53 Ft T/A Aluminum • 2012 Reitnouer 53 ft 53 Ft T/A Aluminum • Reitnouer 53 ft 53 Ft T/A Aluminum • 2017 Transcraft 554 48 Ft T/A Spread Axle • 2012 Transcraft 48 Ft Combo Spread Axle • Transcraft Eagle 48 Ft T/A Spread Axle • 2- 2012 Transcraft Eagle 48 Ft Combo Spread Axle • Transcraft • 2016 Utility FS2CHA 48 Ft T/A Spread Axle • Utility • Fontaine FTW46048SLW T/A.

**PNEUMATIC BULK TRAILERS:** 2015 Carmex TV1000 Nuematic 1000 Cu Ft T/A • 2- 2015 & 2014 Carmex TV1000 Nuematic 1000 Cu Ft T/A Bulk • 2013 Acto • Fruehauf HEBE2J T/A.

**13- BOTTOM DUMP TRAILERS:** 5- Beall BABDS421 40 Ft T/A • Clement Jobstar SP 40 Ft T/A • CPS SBD238 38 Ft T/A • 2- 2017 CTS BDT40 40 Ft T/A • 2- 2017 CTS BDT40 T/A • Load King 182732 40 Ft T/A • Ranch 36 Ft T/A.

**END DUMP TRAILERS:** 2011 Big Tex 12 Ft T/A • Clement RKHL3226 32 Ft T/A Frameless • Clement HL2630-3 26 Ft Tri/A Frameless • SPEM 35 Ft T/A Quarter Frame Demolition • 2018 Texas Pride DT82024KGN 24 Ft T/A Gooseneck • Warren WPD-ES-HR12 T/A Pup.

**CAR HAULER TRAILERS:** DelaVan 2660 53 Ft x 8 Ft 6 In. T/A 6 Car Open • Texas Bragg Classic 18 FT T/A.

**CURTAIN SIDE TRAILERS:** Transcraft DTL2100 W2 53 Ft x 102 In. T/A Combo • Transcraft DTL2100 53 Ft T/A Spread Axle.

**17- REEFER TRAILERS:** 2012 Great Dane SUP11932053 53 Ft x 102 In. T/A • 4- 2010 Great Dane CMT1113 36 Ft T/A • 2012 Great Dane 38 Ft T/A • 2- 2010 Utility 3000R 53 Ft T/A • Utility 48 Ft x 102 In. T/A • 2- 2010 Utility VS2RA 53 Ft x 102 In. T/A • Utility VS2RA 53 Ft x 102 In. T/A • 2- Utility VS2RA 53 Ft T/A • Utility • Wabash RFLWHA 53 Ft T/A • Wabash RFCVHA 53 Ft T/A • 2012 Great Dane SUP11932053 53 Ft T/A.

**GRAIN & SILAGE TRAILERS:** 2019 Wilson DWH651PM 43 Ft T/A Hopper.

**25- VAN TRAILERS:** C T/A Enclosed • Cargo Craft Expedition 85162 16 Ft T/A Enclosed • Cargo Craft VAV8202MD 20 Ft T/A Enclosed • 2010 Cargo Craft Expedition 7162 16 Ft T/A Enclosed • Carry-On 16 Ft T/A Enclosed • 2012 Great Dane PSE121422048 53 Ft x 102 In. T/A • Great Dane 7411TP-SA 53 Ft T/A • 2- Great Dane 7411TDSAL53 53 Ft T/A • Great Dane 7411TDSA 53 Ft T/A • Great Dane 48 Ft T/A • Great Dane T/A • Great Dane • Hyundai VT2530152 53 Ft T/A • Kentucky 48 Ft T/A • Lufkin TFV1PST 53 Ft T/A • Utility 53 Ft T/A • Utility T/A • Vanguard VIP4000 53 Ft x 102 In. T/A • Wabash 53 Ft T/A • Wabash DVCVHPC 53 Ft T/A • 2014 & 2012 Wells Cargo 24 Ft T/A Gooseneck Enclosed • Wells Cargo 16 Ft T/A Enclosed • Wells Cargo 16 Ft T/A • Great Dane 53 Ft T/A • Great Dane 48 Ft T/A • 2012 Great Dane.

**VACUUM TRAILERS:** 2- Brenner T/A • Dragon 130 Barrel T/A • Unused - 2019 & 2- 2019 GTC 130 Barrel T/A • 2012 Southern Vac 130 Barrel T/A • Comp 500 Gallon Portable • 2011 Ditch Witch FX20 S/A.

**TANK TRAILERS:** Brenner 6750 Gallon T/A.

**29- EQUIPMENT TRAILERS:** Ameritrail GN2412 24 Ft T/A Gooseneck • Belshe WB12 16 Ft T/A • Big Tex 24 Ft T/A Gooseneck • 2- 2016 Big Tex 14ET20GNBK 20 Ft T/A Gooseneck • 2011 Big Tex 12 Ft T/A • Centreville 11 Ft 8 In. S/A Tilt Deck • 2- 2013 Centreville • Custombuilt 25 Ft T/A • Custombuilt 16 Ft T/A Gooseneck • KWNS 12 Ft T/A Utility • Load King 20 Ft Tri/A • 2013 MMDI ME4730AP T/A • MMDI ME4730AP T/A • 4- MMDI 510RCMPH • 2012 MMDI ME510RCMPH 10 Ft T/A • MMDI 47RVX514 • 2017 Novae STBZ16SAT 16 Ft T/A Utility • Parker 40 Ft x 8 Ft 6 In. T/A Gooseneck • PJ Trailers 40 Ft T/A Gooseneck • 2016 Pratt EZ1480 14 Ft T/A • 2014 TexMex 20 Ft T/A Utility • Belshe • Eager Beaver • Road Diamond C T/A Gooseneck • 3- EZ1480.

**REEL TRAILERS:** 2013 Midland Carriers RB1250 1 Reel S/A Gooseneck • Custombuilt 1 Reel S/A • 2013 Midland Carriers PL6000 Pipe Retrieving Spool.

**TRAILERS:** Butler BP3080 30 Ft T/A Extendable Pole • Butler T/A Pole • 2012 Capacity Spotter Truck • DESP Double Rolloff • Luxu 48 Ft • Overbilt T/A Stretchable Pole • T/A Boom Dolly.

**27- MOBILE STRUCTURES:** 2- Unused - 65 x 30 x 15 Ft Peak Ceiling Double Storage Building • 3- 64 x 24 Ft Double Wide Classroom • Unused - 40 x 32 x 14 Ft Storage Building • 3- Unused - 40 x 30 x 15 Ft Peak Ceiling Double Storage Building • 3- Unused - 40 x 24 x 14 Ft Storage Building • 2- Unused - 30 x 20 x 12 Ft Peak Ceiling Storage Building • 2- Unused - 19 x 11 Ft Metal Shed • Unused - 7 x 4 Ft Portable Double Restroom • AJLR 804021PE Heavy Duty Storage Building • Unused - 2019 Austin SPA2217S 7 Ft x 5 Ft 8 In. Portable Deluxe R • Unused - 2019 Austin SST2213 7 x 4 Ft Portable Double Restroom • Unused - 2019 Austin SPA2212S 7 x 4 Ft Portable Restroom • 2- Unused - 2019 Austin SST1113 3 Ft 6 In. x 4 Ft Portable Restroom • Unused - 2019 Shin Kobe IIT2110C 7 x 4 Ft Portable Double Restroom • 2- Unused - 2019 Suihe 7 x 6 Ft Portable Restroom • Unused - 2019 Suihe 7 x 4 Ft Portable Double Restroom • 130 x 54 Ft Storage Building • 2- Unused - 2019 Suihe S408020R Dome Storage Building • 3- Unused - 2019 Suihe 203012R Dome Storage Building • 2- Unused - 2019 Suihe C4040 Dome Ceiling Storage Building • 3- Unused - 2019 Suihe C2040 Dome Ceiling Storage Building • Unused - 2019 Suihe C2020 Dome Ceiling Storage Building.

**16- LANDSCAPE EQUIPMENT:** 3- Unused - 20 Ft Heavy Duty Bi-Parting Wrought Driveway Gate • Craftsman LT1000 Riding Lawn Mower • Lawnboy 20 In. Self-Propelled Lawn Mower • 6- Unused - 2019 Suihe Driveway Gate • 5- Unused - 2019 Sun Up 20 Ft Heavy Duty Steel Driveway Gate.

**LIVESTOCK EQUIPMENT:** Unused - 12 x 20 Ft Skid Mtd Livestock Shelter • 7- Unused - A & K Best Panels 24 Ft x 66 In. Heavy Duty Stock Panels • Unused - 2019 Suihe 10 Ft Powder Coated Corral Panels.

**12- RECREATIONAL VEHICLES:** 4- Club Car XRT900 Golf Cart • Club Car Golf Cart • Frontier Explorer 30 Ft T/A Travel Trailer • Trex Fifth Wheel Travel Trailer • 3- Yamaha YDRA Golf Cart • 3 Seat Golf Cart • Dune Buggy.

**10- UTILITY CARTS:** 2014 Bobcat 3400XLD 4x4 • 2013 Bobcat 3400 4x4 • 3- Ez Go TXT48 Electric • Ez Go Express S4 • 2012 John Deere Gator • 2015 Kawasaki 4010 Mule 4x4 • 2014 Kubota RTV1140CPX 4x4 • 2011 Polaris Ranger Crew 4x4.

**SCALES:** 2- Unused - 10 Ton Digital Floor • Unused - 5 Ton Platform.

**AIR COMPRESSORS:** 30 Gallon Electric.

**13- CONSUMER GENERATOR SETS:** Qty of All Power 6500 W • Qty of 2 Vox VXG6500 6500 W • Qty of Atlas Copco • 2017 Atlas Copco P6500W • Qty of Generac XP8000E 2 8 KW • Generac XG8000E 8000 W • Qty of Generac XP6500E 6.5 KW • Honda EU6500is 6500 W • Honda EB5000X 5000 W • Honda EU2000i 2000 W • Multiquip GA6HR 6000 W.

**WELDERS:** Qty of Miller Maxstar 220 STR Skid Mtd • Qty of Miller XMT350 Electric • Miller Dimension 452 Electric • Miller SRH444 Skid Mtd Electric.

**PUMPS:** Qty of Mustang MP4800 2 In. Submersible • Qty of 15 GPM Diesel Fuel Tranfer • Qty of 3 In. Diaphragm • Qty of Diaphragm • Qty of Grundfos Electric • Coleman 2 In. Trash • 2019 Gwalker WPT3 3 In. Trash Water • 2019 Gwalker WPC3 3 In. Clean Water • Hammonds 600ER102 4 In. Skid Mtd.

**37- TANKS:** Unused - 2019 AM Tank 2300 2378 Gallon Skid Mtd Fuel • 4- Unused - 2019 AM Tank 800 838 Gallon Skid Mtd Fuel • 2- Unused - 2019 AM Tank 250 257 Gallon Skid Mtd Fuel • 3- Unused - 2019 AM



Tank 116 116 Gallon Fuel • 2- Unused - 2019 AM Tank 80 80 Gallon Waste Oil • 6- Unused - 2019 AM Tank 58 58 Gallon Fuel • Better Built 100 Gallon Fuel • Delta 484000 100 Gallon Fuel • 11- SMI • Unused - 2019 Yuni D1000DC 260 Gallon Skid Mtd Fuel • Unused - 2019 Yuni D620DC 160 Gallon Fuel • Unused - 2019 Yuni D500DC 130 Gallon Skid Mtd Fuel • Unused - 2019 Yuni D430DC 110 Gallon Skid Mtd Fuel • Qty of Air Tanks • Plastic.

**CONCRETE EQUIPMENT:** Husqvarna DS450 Core Drill.

**SURVEY EQUIPMENT:** Unused - 2019 Geotop GNA32 Engineer 32x Automatic Level • 2019 Geotop GL7 Dual Grade Automatic Self-Leveling Laser Level • Unused - 2019 & 3- 2019 Geotop GL5 Automatic Self-Leveling Rotating Laser Level.

**PIPELINE EQUIPMENT:** Qty of 36 In. Pipe Clamps • Qty of 6 Pipe Carts • Qty of Custombuilt Pipe Stand • Greenlee 871 Bending Machine • Greenlee 855 Electric Bending Machine • Ridgid 535A Pipe Threader • Ridgid 535 Pipe Threader • Ridgid 141 4 In. Die Head.

**82- CONTAINER EQUIPMENT:** Unused - 2019 40 Ft High Cube Container • 9- 40 Ft High Cube Container • 8- 40 Ft Container • 40 CY Rolloff Box • Dragon 25 CY Rolloff Vacuum Box • 20 Ft Office Container • 2- 20 Ft High Cube Container • 3- 2019 20 Ft Container • 22- 20 Ft Container • 2- Unused - 20 CY Rolloff Box • Qty of 8 10 x 20 Ft Container Skid • Qty of Unused - Suihe 1 CY Self Dumping Hoppers • 4- 2 CY Self Dumping Hopper • 1 CY Stackable Self Dumping Hopper • 3- 1.75 CY Self Dumping Hopper • 2- 1/2 CY Stackable Self Dumping Hopper • Container • Dragon 25 CY Rolloff Box • Dragon 25 CY Rolling Lid Rolloff Box • Extreme XC2000 10 x 20 Ft Fuel Container • Extreme XC2000 10 x 20 Ft Office Container • Extreme XC2000 10 x 20 Ft Storage Container • Extreme 8 Ft 6 In. x 10 Ft Storage Container • May Fab 40 CY Rolloff Box • May Fab 25 CY Roll Tarp Rolloff Box • 2- May Fab 25 CY Rolloff Box • 3- 2019 Suihe 40 Ft High Cube Container • 2- 2019 Suihe 9 Ft Office Container • 2- 2019 Suihe 8 Ft Office Container • 2019 Suihe 7 Ft Office Container • Xtreme XC2000 10 x 20 Ft Storage Container.

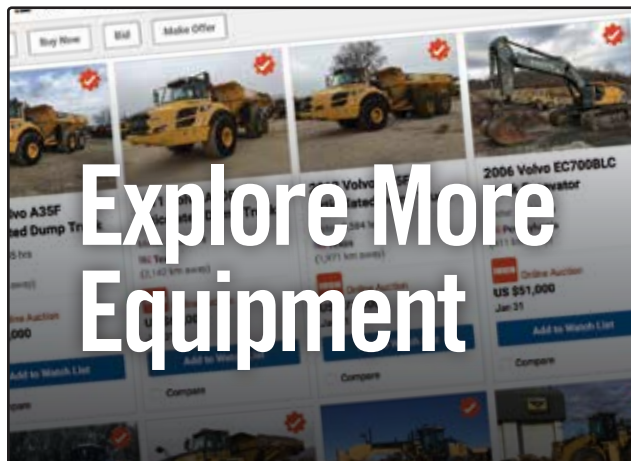
**INDUSTRIAL PLANT EQUIPMENT:** 2- Unused - 75 Ton Hydraulic Shop Press • 2- Unused - 50 Ton Hydraulic Shop Press • Qty of 2 Thermal Dynamics Plasma Cutters • Jet Horizontal Bandsaw.

**ENGINES:** Caterpillar 3116 • Detroit 8V92 • International T444 • International 7.3 L 8 Cylinder Diesel.

**DRILL PARTS & ACCESSORIES:** Qty of 10 Ft x 1 7/8 In. Drill Stem • Qty of 12 In. Auger Bits • 2012 APPCO FS30 Portable Sand King Trailer • Dragon 500 Barrel Portable Frac Tank • 3- 2011 Keystone MSB4000 T/A Sand King Trailer • K-Winch Landline Seismic Unit.

**17- CRANE ACCESSORIES:** Qty of Unused - Mackman G80 4 Leg Chain Sling • Qty of 9 Ton Shackles • Qty of Unused - 2 Leg Chain Slings • Qty of Shackles • Unused - 2019 Mackman G80 4 Leg Adjustable Chain Sling • Qty of Unused - Suihe 4.75 - 12 Ton Shackle • Unused - Qty of Suihe 2 - 5 Ton Webbing Sling • Unused - Qty of Mackman 2 - 12 Ton Round Lifting Sling • Qty of Unused - Mackman 12 Ton Flat Webbing Sling • Qty of Unused - Mackman 1 - 4 Ton Round Lifting Sling • Qty of Unused - Mackman 1 - 3 Ton Flat Webbing Sling.

**ITEMS INCLUDE:** Equipment, Construction & Transportation Attachments • Shop & Warehouse Items • Parts & Stationary Items - Construction & Transportation.



# Explore More Equipment



Check IronPlanet's weekly online equipment auctions

[IronPlanet.com](http://IronPlanet.com)

## Marketplace



MAKE OFFER

BUY NOW

# Equipment Available Every Day

Explore daily online listings and choose your buying method

[IronPlanet.com/Marketplace-E](http://IronPlanet.com/Marketplace-E)

## Upcoming auctions around the world

### USA

Sacramento, CA	Jun 11
Kansas City, MO	Jun 11
Minneapolis, MN	Jun 18
Houston, TX	Jun 18-19
Chicago, IL	Jun 20
Nashville, TN	Jun 21
North East, MD	Jun 25
Salt Lake City, UT	Jun 25
Atlanta, GA	Jun 26
Columbus, OH	Jun 27-28
Los Angeles, CA	Jun 28-29
Wasilla, AK	Jun 29
Fort Worth, TX	Jul 16-17
Las Vegas, NV	Jul 19
Midland, TX	Jul 23

### Canada

Truro, NS	Jun 11
Saskatoon, SK	Jun 13-14
Thunder Bay, ON	Jun 14
Edmonton, AB	Jun 20-22
North Battleford, SK	Jun 25
Corner Brook, NL	Jun 27
Lethbridge, AB	Jun 27
Regina, SK	Jul 3
Toronto, ON	Jul 9-10

### International

Polotitlan, MEX	Jun 7
Brisbane, AUS	Jun 11
Cambridge, NZL	Jun 13
Ocana, ESP	Jun 13-14
Dubai, UAE	Jun 18-19
Caorso, ITA	Jun 20-21
St Aubin Sur Gaillon, FRA	Jun 25
Moerdijk, NLD	Jun 26-28





2 of 6 – Caterpillar D8K w/Hyd Conversions



2 – Link-Belt HTC8675 75 Ton



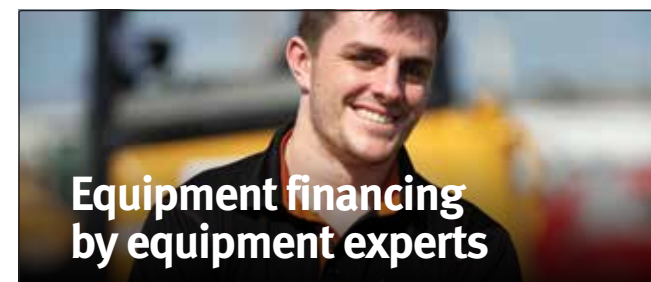
2015 Freightliner 108SD



2 – 2016 Hamm H11i



3 of 6 – Grove RT700E 60 Ton



## Equipment financing by equipment experts

Get pre-approved fast with no obligations.  
Call 1.855.331.7237 or visit us online

[rbfinance.com](http://rbfinance.com)

See complete auction and equipment information on our website

[rbauction.com](http://rbauction.com)

Equipment videos, photos, auction news and more.  
Like us on [facebook.com/RitchieBros](https://www.facebook.com/RitchieBros)



Scan using your device's camera  
or a QR code reader.

Houston, TX | June 18–19, 2019 (Tue–Wed)

[rbauction.com](http://rbauction.com)

**rb RITCHIE BROS.**  
Auctioneers®