



4 of 5 – 2010 Caterpillar D7E



3 of 14 – Caterpillar 336EL



2 of 9 – 2018 & 2 of 3 – 2017 Caterpillar PL87



2013 CRC-Evans PB1630



2 – 2012 Caterpillar 953D



Michael Byrne D36-500 36 In.



2 – 2017 & 2016 Power Bully 12RT
Low meter hours

rb RITCHIE BROS.
Auctioneers®

THE
**PIPELINE CONSTRUCTION
EVENT OF THE YEAR**

COLUMBUS, OH – June 27–28

Absolute public auction



8 of 24 – 2017 & 4 of 6 – 2016 Caterpillar PL83

134+ PIPELAYERS

50+ CRAWLER TRACTORS

53+ EXCAVATORS

ACCEPTING CONSIGNMENTS, CONTACT US NOW

rbauction.com/Columbus

Columbus, OH

June 27–28, 2019

(Thu–Fri) 8:00 am

Phone: **937.568.9500**

Fax: 937.568.9504

Auction location: 200 Ritchie Dr,
South Vienna, OH 45369

4,200 items & counting

Bid in person or online

On-site registration starts: Jun 25 (Tue)

Inspection hours: Mon–Fri, 8 am – 5 pm

Items must be removed by: Jul 11 (Thu)

Auction Firm # 2008000166, Auctioneer Kevin L. Perry # 2002000227



Take advantage of exclusive rental car discounts.

AVIS code: C039702 | Budget code: A062002

Auction highlights

A complete dispersal for:
Welded Construction, L.P. Fleet

Equipment from:
CRC
Energy Transportation LLC
Michels Corporation
Ohio Caterpillar
Penske

and other owners.

Visit rbauction.com for complete auction information

- Full equipment listings, more photos and detailed equipment information
- New additions to each auction – items added daily!
- Deposit and payment information, including financing, wire transfer accounts and taxes
- Full auction schedule, with times and lot numbers
- Maps, hotels and other local services

Auction notes

- ▶ Every item is sold ‘as is, where is’
- ▶ International and online bidders – you may need to place a refundable deposit before you bid – check the auction details on our website for more information
- ▶ Transaction fee: (a) 10% on all Lots selling for \$10,000 or less, (b) 3.85% on all Lots selling for over \$10,000 up to \$33,500, with a minimum fee of \$1000 per Lot or, (c) \$1,290 on all Lots selling for over \$33,500.

Directions to auction site

From **Dayton International Airport**, go northwest on Terminal Dr. which becomes Dayton International Airport Access Rd. Merge onto I-70 E toward Columbus and follow to Exit 66 OH-54 Catawba/S. Vienna. Turn right on OH-54/S



and make an immediate right on Ritchie Dr. and continue to auction site. Approx distance is 40 miles and approx drive time is 45 min.

From **John Glenn Columbus International Airport**, go left on International Gateway merge onto I-670 W toward Columbus. I-670 W becomes I-70 W follow to Exit 66 OH-54 Catawba/S. Vienna. Turn left on S. Urbana St/OH-54. Turn right on Ritchie Dr. and follow to auction site. Approx distance is 41 miles and approx drive time is 45 min.

Low meter hours / Low mileage

Less than 500 hrs / 500 miles

Equipment financing by equipment experts

Get pre-approved fast with no obligations.
Call 1.855.331.7237 or visit us online

rbfinance.com

WIN YOUR WHEELS

ENTER FOR A CHANCE TO WIN A SIDE BY SIDE!

See details and enter at:
rbauction.com/winyourwheels



3 of 15 – Caterpillar 594H w/Vanguard



3 of 14 – Caterpillar 594 w/Vanguard



3 of 7 – Caterpillar 583K w/Vanguard



3 of 10 – Caterpillar 583H



1 of 2 – Caterpillar 572E



Caterpillar 571G



2 – Caterpillar 571F



3 – 2013 Caterpillar PL61



3 of 4 – Caterpillar D9H w/Superior SP594



1 of 3 – Caterpillar D6D w/Midwestern M562



Caterpillar D5H w/Midwestern M540



1 of 2 – John Deere 850J w/Midwestern M572CXL



2 of 5 – John Deere 700J w/Midwestern M540



Caterpillar D9R



3 of 4 – Caterpillar D8K



Caterpillar D7R LGP



2 – Caterpillar D7R LGP Series II



1 of 2 – 2012 & 2011 Caterpillar D6T LGP



Caterpillar D6RXWVP



1 of 3 – Caterpillar D6N LGP & Caterpillar D6N XL



2011 John Deere 750J LGP



2 – 2012 Volvo L120G



1 of 3 – Terex R070T



Volvo G780B



2013 Caterpillar 349EL



Caterpillar 321D LCR & Caterpillar 321C LCR



Caterpillar 320CLU



Caterpillar 320L



3 of 10 – 2013 John Deere 350G LC



2 – 2015 John Deere 350G LC



2011 Kobelco SK140SRLC



Volvo EC360BLC



Liebherr R954B



2013 Volvo ECR88



2 of 5 – 2013 & 3 – 2012 Kubota K008-3



Terex TA30



Volvo A40D



Ditch Witch JT3020



2010 Vermeer D24X40 Series II



Caterpillar 420D IT 4x4



2 – John Deere 310J 4x4



American Augers 60-1200 60 In.



American Augers 54-1MS 54 In.



Michael Byrne D48-200 48 In.



Michael Byrne D36/42-700 42 In.



Grove RT522 22 Ton



Link-Belt HTC1055 55 Ton



Grove TMS475 50 Ton



Blaw-Knox PF3200



Roadtec RP180



1 of 2 – Unused – 2019 Vickwest PRS8532 32 In. x 85 Ft



2016 Kenworth T680



3 of 14 – Mack CX613



1 of 3 – 2013 Peterbilt 386



Peterbilt 379



2015 Peterbilt 375



3 of 6 – 2013 Volvo VNL64670



3 of 6 – 2012 Volvo VNL64300



2014 International PayStar



3 – Sterling LT9513



2017 Mack GU713



International F2375



2010 Mack GU713 Off Highway



3 of 6 – Mack DM690S



Mack MR688 w/Putzmeister M382 & Mack MR688 w/Putzmeister M36Z



Peterbilt 379



Sterling LT7501 4000 Gallon



Peterbilt 357 w/National 11105 26.5 Ton



2012 International 7400SBA w/Altec DM47TCw



2011 Ford F450 XL w/Altec AT200A



Mack RW713 Superliner



2010 International 7500SBA w/Vactor 2115P18



1 of 9 - Freightliner 122SD 100 Barrel



1 of 10 - Peterbilt 389



Sterling L9500 w/Vac Con



2 – Ford F750 XL Lube



2 – International 5900I SFA 3000 Gallon Refueler



1 of 2 – Kenworth T800 3000 Gallon Refueler



1 of 6 – 2016 Peterbilt 389 110 Barrel



2 – 2011 Ford F450 XL



5 – 2011 Ford F550 XL



Ford F650 XLT



3 of 10 – 2014 International 4300SBA



1 of 9 – International 4300SBA



1 of 3 – International 5900I



2 of 11 – Chevrolet 3500HD 4x4



1 of 2 – 2014 Talbert 55 Ton



Trail King TK120MDG-622 60 Ton



2 of 7 – 2017 Trail King TK110HDG &
2 of 6 – 2017 Trail King TKFA1



2016 Coyote LGT14 w/Anderson M160



2017 Mac 40 Ft Aluminum



1 of 3 – Transcraft Eagle W2 53 Ft



3 of 10 – 2012 Wabash 53 Ft



2019 Maxey 40 Ft



3 of 18 – 2016 Sunbelt 40 Ft



48 x 48 x 16 Ft Paint Shop



2012 JLG G1255A 12000 Lb 4x4



1 of 2 – 2011 Skytrak 6042 6000 Lb 4x4x4



1 of 4 – Skytrak 10054 10000 Lb 4x4x4



Case IH Magnum 245



New Holland TG275



1 of 2 – 2014 & 2 – 2012 Kubota BX25 4x4



3 – IHI IC70-2



2015 Lay-Mor SM300



2 – CRC-Evans PB620



3 of 4 – CRC PB3242



2016 Darby 620



1 of 2 – 2014 Godwin CD200M 8 In.



2 of 3 – 2016 Lift Technologies LT30



Vacuworx RC12



4 of 6 – Vacuworx RC10



3 of 8 – Vanguard CPW125-4 Continuous



Large Qty of Pipeline Sleds



Large Qty of Pipeline Supplies – To be sold by photo in Perrysburg, OH



1 of 2 – Godwin CD150M 6 In. &
1 of 14 – CD100 4 In.



1 of 4 – Grundmudd DS500 500 Gallon



Ingersoll-Rand EMC660



Large Qty of Warehouse Trailers



Flexifloat S50
To be sold by photo in Perrysburg, OH



Containers w/ Large Qty of Pipeline Supplies –
To be sold by photo in Perrysburg, OH

Equipment listings

Construction

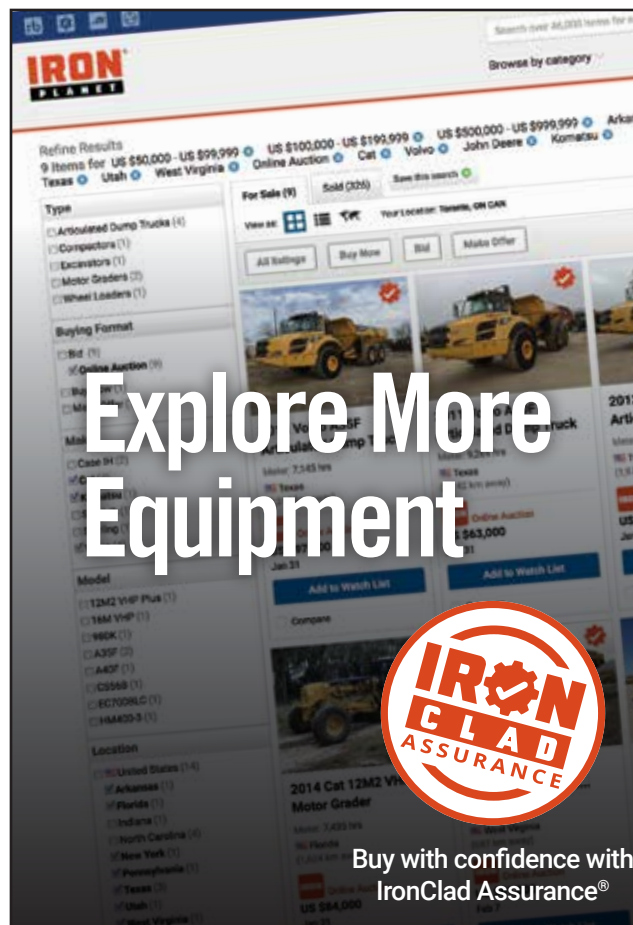
134- Pipelayers • tack tractors • 50- crawler tractors • 19- wheel loaders • 16- skid steer loaders • 33- multi terrain loaders • 53- hydraulic excavators • material handlers • midi excavators • 27- mini excavators • articulated dump trucks • rock trucks • cable plows • trenchers • 11- directional drills • 16- boring machines • 16- loader backhoes • rough terrain cranes • hydraulic truck cranes • cranes • vibratory padfoot compactors • vibratory smooth drum rollers • tandem rollers • rollers • walk behind compactors • asphalt pavers • concrete pavers • 25- environmental equipment • screen plants • conveyors • aggregate equipment

Trucks & trailers

Winch tractors • bed & rig-up trucks • 152- truck tractors • car carriers • quad axle dump trucks • 13- dump trucks • plow trucks & sanders • 15- mixer trucks • concrete pump trucks • water trucks • boom trucks • digger derrick trucks • 27- bucket trucks • stone slinger trucks • 47- vacuum trucks • 13- fuel & lube trucks • 11- mechanics trucks • reefer trucks • 28- utility trucks • rollback trucks • 63- van trucks • rolloff trucks • grain & silage trucks • cab & chassis trucks • 57- flatbed trucks • trucks • sports utility vehicles • 61- pickups • 28- buses • automobiles • 27- lowboys • 13- step deck trailers • 26- jeeps • 33- hiboys • pneumatic bulk trailers • log trailers & rigging • end dump trailers • curtain side trailers • 19- reefer trailers • 54- van trailers • vacuum trailers • tank trailers • 147- equipment trailers • 60- trailers • mobile structures.

Other items include

14- Telescopic forklifts • rough terrain forklifts • 29- forklifts • electric forklifts • 16- scissorlifts • 106- boom lifts • mfw agricultural tractors • 2wd agricultural tractors • utility tractors • seeding equipment • cultivators • discs • plows • harrow bars & packers • haying equipment • pull scrapers • agricultural equipment • landscape equipment • livestock equipment • dumpers • sewer & water • all terrain vehicles • brooms • recreational vehicles • utility vehicle • barges • pleasure craft • marine equipment • drills • 80- air compressors • generator sets • consumer generator sets • light generator sets • light towers • 150- welders • 60- pumps • water towers • tanks • concrete pumps • concrete equipment • survey equipment • pipeline equipment • container equipment • industrial plant equipment • engines • drill parts & accessories • crane accessories • equipment attachments • tractor attachments • truck attachments • industrial items • equipment parts • shop & warehouse • parts / stationary – construction & transportation.



Explore More Equipment



Buy with confidence with IronClad Assurance®

Check IronPlanet's weekly online equipment auctions

IronPlanet.com



Upcoming auctions around the world

USA

Sacramento, CA	Jun 11
Kansas City, MO	Jun 11
Minneapolis, MN	Jun 18
Houston, TX	Jun 18–19
Chicago, IL	Jun 20
Nashville, TN	Jun 21
North East, MD	Jun 25
Salt Lake City, UT	Jun 25
Atlanta, GA	Jun 26
Columbus, OH	Jun 27–28
Los Angeles, CA	Jun 28–29
Wasilla, AK	Jun 29
Fort Worth, TX	Jul 16–17

Canada

Truro, NS	Jun 11
Saskatoon, SK	Jun 13–14
Thunder Bay, ON	Jun 14
Edmonton, AB	Jun 20–22
North Battleford, SK	Jun 25

International

Brisbane, AUS	Jun 11
Cambridge, NZL	Jun 13
Ocana, ESP	Jun 13–14
Dubai, UAE	Jun 18–19
Caorso, ITA	Jun 20–21

* NOTE NEW DATE



1 of 5 – Caterpillar 583T



1 of 6 – 2012 & 2 of 4 – 2011 Caterpillar D8T



1 of 5 – 2013 John Deere 470G LC



2017 Peterbilt 337 – Low mileage



2014 Peterbilt 367



2 – 2016 Mack GU713



3 – Kenworth W900

See complete auction and equipment information on our website

rbauction.com

Equipment videos, photos, auction news and more.
Like us on facebook.com/RitchieBros



Scan using your device's camera or a QR code reader.

Columbus, OH | June 27–28, 2019 (Thu–Fri)

rbauction.com

rb RITCHIE BROS.
Auctioneers®