



2 – 2014 Caterpillar 730C EJ 6x6



2 – Irontec w/Kenworth T800 Swab Rig Well Service Unit



2 – 2012 Alloy Custom Products  
37320 Litre Bulk Nitrogen



2017 Caterpillar 330FL



3 – 2018 Caterpillar D6T LGP

**rb RITCHIE BROS.**  
Auctioneers®

**Edmonton, AB**  
February 26–28, 2019 (Tue–Thu)

Unreserved public auction

ACCEPTING CONSIGNMENTS, CONTACT US NOW

[rbauction.com/Edmonton](http://rbauction.com/Edmonton)

# Edmonton, AB

February 26–28, 2019

Tue–Thu 8:00 am

Phone: **780.955.2486**

Fax: 780.955.2662

Auction location: 1500 Sparrow Dr, Nisku, AB, T9E 8H6

## 3,100+ items & counting

Bid in person or online

On-site registration starts: Feb 23 (Sat)

Inspection hours: Mon–Fri, 8 am–4 pm

Feb 23–24 (Sat–Sun) & Mar 2 (Sat) for load out 8 am–4 pm

Items must be removed by: Mar 15 (Fri)

Auction Company License #303043



### Car rentals

Take advantage of exclusive rental car discounts.

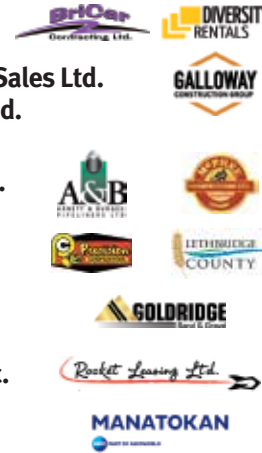
AVIS code: C039702 | Budget code: A062002

### Auction highlights

Complete dispersal for:  
**Fire Power Oilfield Firefighting Ltd.**  
**J&S Oilfield Contracting Inc.**

Major realignment:  
**BriCar Contracting Ltd.**  
**Diversity Equipment Rentals & Sales Ltd.**  
**Galloway Construction Group Ltd.**

Equipment from:  
**Arnett & Burgess Pipeliners Ltd.**  
**Goldridge Sand & Gravel**  
**McPhee Construction Ltd.**  
**Precision Contractors Ltd.**  
**Rocket Leasing Ltd.**  
**Lethbridge County**  
**Manatoka Oilfield Services Inc.**  
**Rural Municipality of Coteau**  
**Rural Municipality of Tullymet**  
and other owners.



Visit [rbauction.com](http://rbauction.com) for complete auction information

- Full equipment listings, more photos and detailed equipment information
- New additions to each auction – items added daily!
- Deposit and payment information, including financing, wire transfer accounts and taxes
- Full auction schedule, with times and lot numbers
- Maps, hotels and other local services

### Auction notes

- ▶ Every item is sold 'as is, where is'
- ▶ International and online bidders – you may need to place a refundable deposit before you bid – check the auction details on our website for more information
- ▶ Transaction fee: (a) 10% on all lots selling for \$5,000 or less, (b) 3.85% on all lots selling for over \$5,000 up to \$33,500, with a minimum fee of \$500 per lot or, (c) \$1,290 on all lots selling over \$33,500.

### Directions to auction site

From Edmonton city limits, approx 20 km South.

From Edmonton Int'l Airport, approx 2 km East to Sparrow Drive, then 1 km North to auction site.

Parking attendants and shuttle buses will be provided for your convenience. For viewing purposes, on-site shuttle service will be provided on Feb 22–28, 8 am–4 pm. Designated non parking areas within the Nisku Park will carry fines.

**rb RITCHIE BROS.**  
Auctioneers™



### Bid on rock star parking to support a great cause!

Bid on preferred parking spots via Timed Auction at our Edmonton auction February 26 – 28, 2019, and all proceeds will be donated to the Children's Wish Foundation.

Spots will be valid March 2, 2019 – March 1, 2020.

[rbauction.com/edmonton](http://rbauction.com/edmonton)

PurchaseFlex™ Financing limited-time offer

**NO PAYMENTS**

FOR

**120 DAYS\***

apply today at  
[rbauction.com/Flex](http://rbauction.com/Flex)

\*OAC. Terms and conditions apply.

Visit [rbauction.com](http://rbauction.com)

for detailed equipment information  
and photos.



John Deere 650J w/Midwestern



John Deere 550J w/Midwestern



Caterpillar D5G LGP



2012 John Deere 750J



John Deere 750C LGP



2012 Caterpillar D6T XW



1 of 2 - Caterpillar D8T



1 of 2 - Caterpillar D8R



2014 Caterpillar D6T XW



2009 Caterpillar D8T



2 – 2014 Caterpillar 160M2 AWD VHP Plus



Caterpillar D6T LGP



John Deere 750J LGP



2011 John Deere 644K



2012 Caterpillar 160M VHP Plus



2013 John Deere 872GP AWD



John Deere 772D AWD



2009 John Deere 770G



2014 Volvo G970



2 – 2014 John Deere 872GP AWD



2018 Caterpillar 323FL



2013 Caterpillar 329EL



Caterpillar 320CL



2 – 2012 Hitachi ZX470LC-5B VG



1 of 3 – 2011 Hitachi ZX450LC-3 VG



2012 Caterpillar 305.5ECR



2012 Hitachi ZX290LC-5N



2015 Hitachi ZX210LC-5B



1 of 2 – 2015 John Deere 290G LC



John Deere 270D LC



Komatsu PC600LC-8 Galeo VG



Fantuzzi MJ55RS 45000 Kg Container Handler



2 – 2013 & 3 – 2012 Caterpillar 740B 6x6



2 – Unused – 2018 Dynapac CA3500D



Bomag BW145DH-3



1 of 2 – 2012 Caterpillar CP74B



CEC MS42X26 Jaw



2013 Mormak BF4248



CEC 450 Closed Circuit Cone



JCI 1400LS Cone



2013 Mormak Twin 6202



CEC 70 in. x 16 Ft 3 Deck



2013 Calrose Electric 53 Ft



Great Dane 53 Ft



1 of 2 – 2011 Kenworth T800 Winch



Kenworth C500B Winch



Kenworth C500B Winch



2016 Western Star 4900SA Heavy Haul



1 of 4 – 2013 Freightliner Cascadia 125



1 of 5 – 2015 Mack CXU613



3 – 2015 Kenworth T800 & 2014 Kenworth W900



2 of 3 – 2014 Kenworth T800





2015 Peterbilt 567



2012 Freightliner 122SD Coronado



2010 Freightliner M2112V



2 of 3 – 2012 International 7600 SBA Workstar



Freightliner Hot Oil



2009 Kenworth T800



2012 Kenworth T800 Pressure



Peterbilt 357 w/Weldco Beales WHL40TC97



2009 Western Star 4900SA



2016 Caterpillar CT660S Hydro Vac



2014 Ford F550 4x4



2011 International Lonestar



2012 & 2011 Western Star 4900SA Combo



2011 Kenworth W900, 1 of 2 – Kenworth W900B & 1 of 5 – Peterbilt 378 Fire Suppression



2012 Peterbilt 348 & 2 – Kenworth T300 Shower



2009 International PC105CE 33 Passenger 4x4



1 of 2 – 2016 K-Line KDF109 68 Ft 3+3+1 Steerable



K-Line 9 Axle Steerable



2019 MAC TR1250APB 1250 Cu Ft & 3 of 8 – 2015 Tremcar 1200 Cu Ft



2 of 3 – 2014 Tremcar 1200 Cu Ft



2014 Doepker SN17146-S 40 Ton



2014 Arnes 31 Ft



2018 Cross Country 17 Ft



5 – Unused – 2019 3 Star EC16 18 Ft



2 – 2013 Troxell



2 – 2015 Dragon 45992 Litre



2019 MISB 60 x 12 Ft Office



2013 Challenger MT855C



2009 John Deere 7930



Spartan Travel Supreme 45MS24 Class A 45 Ft



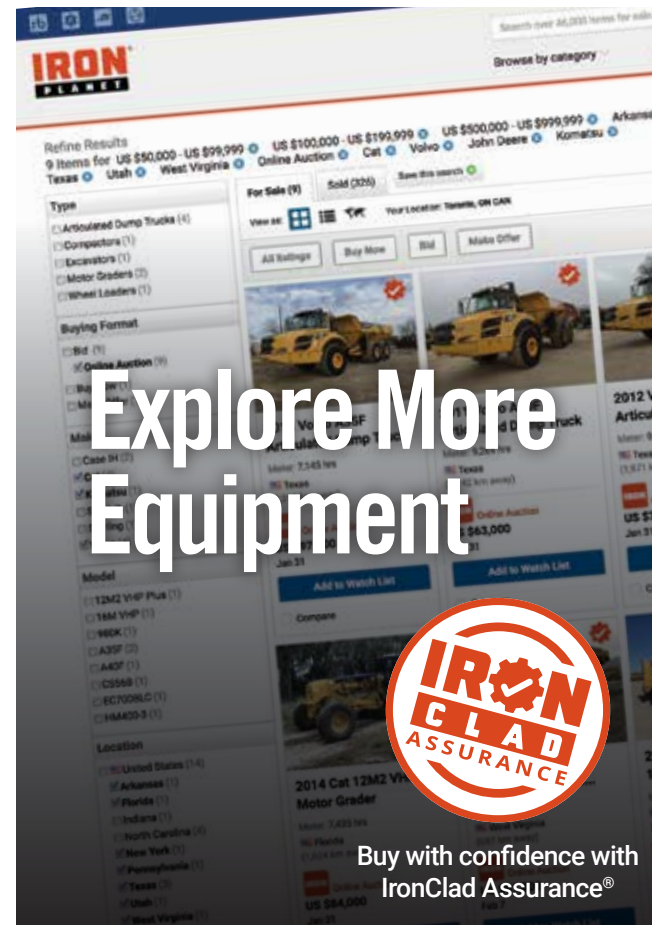
KSM w/Kenworth T800 Swab Rig Well Service Unit



2012 Fabmaster 11M BTU Super Heater



Antique Fuel Pump



Explore More Equipment



Buy with confidence with IronClad Assurance®

Search,  
Bid and Buy  
from Anywhere

Get the Live Auction Experience  
with Ritchie Bros Mobile App



Download at [rbauction.com/app](http://rbauction.com/app) today.



Marketplace 

MAKE OFFER BUY NOW

Equipment  
Available Every Day

Explore daily online listings  
and choose your buying method

[IronPlanet.com/Marketplace-E](http://IronPlanet.com/Marketplace-E)

Check IronPlanet's weekly  
online equipment auctions

[IronPlanet.com](http://IronPlanet.com)



# Real estate selling from this auction

Property may be viewed by appointment



**Rockwater Energy Solutions Inc**  
DML Industrial Campsite and Storage Lease Land Improvement  
13.99± Title Acres – Seal Lake, AB

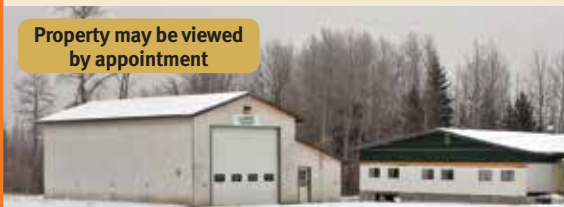
**Parcel 1 – DML 930053 - Seal Lake - 13.99± acres**

- ▶ 5500± sq ft shop, (2) 100 ft drive-through bays, (4) 16 ft x 16 ft auto overhead doors, washroom, pressure washer, air compressor, attached 16 ft x 40 ft sea container parts room, rainwater collection tank, well, water treatment sea container, (3) 1000 gal propane tanks, gravelled yardsite. Taxes \$10,331.34, annual lease fees \$689.90, lease renewal May 2020.



Parcel 1 – 5500± sq ft shop interior

Property may be viewed by appointment



**Rockwater Energy Solutions Inc**  
DML Industrial Campsite and Storage Lease Land Improvement  
7.64± Title Acres – Utikuma, AB

**Parcel 2 – DML 840100 – Utikuma – 7.64± acres**

- ▶ 1368± sq ft shop, 24 ft x 48ft single bay, 16 ft x 14 ft overhead door. 12 ft x 18 ft entry and utility room, in-floor heat, GIC 18-man camp, gravelled yardsite. Taxes \$1731.88, annual lease fees \$626.40, lease renewal August 2020.



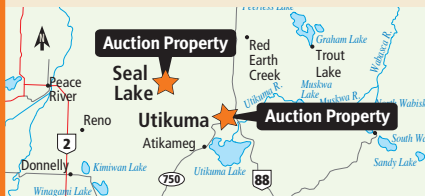
Parcel 2 – Kitchen

In regards to both properties:

Alberta Environment and Parks will require a refundable security deposit.

Sale of improvement will be subject to applicant successfully receiving lease assignment.

The successful bidder will make application to Alberta Environment and Parks for lease assignment and will be responsible for all the costs associated.



Contact – Chris Kostiuk: 780.983.8447

Ritchie Bros. Territory Manager

Danny Strayer: 780.296.3765

Ritchie Bros. Real Estate

Jerry Hodge: 780.706.6652

Brokerage: Ritchie Bros. Real Estate Services Ltd.

# Real estate selling from the Edmonton April auction

Open House:

Mar 30 & Apr 13 – 2 to 4 pm



2016 2490± Sq Ft Home



**GDK Gravel and Sand Ltd.**

1 Parcel of Real Estate – 95.02± Title Acres  
2.6± Million Tonnes Proven Gravel Reserves  
2490± Sq Ft Home – Sundre, AB



Contact – David Taddia: 403.588.2003  
Ritchie Bros. Real Estate – Jerry Hodge: 780.706.6652  
Brokerage: Ritchie Bros. Real Estate Services Ltd.

Open House:

Mar 30 & Apr 13 – 2 to 4 pm



2017 1200± Sq Ft Home



**Mark Brydges**

1 Parcel of Real Estate – 0.44± Title Acres  
1200± Sq Ft Lakeview Home – Kelowna, BC



Contact – Mark Brydges: 949.313.7348  
Ritchie Bros. Real Estate – Jerry Hodge: 780.706.6652  
Realtor® – Tom Moran PREC\*: 250.784.7090  
Brokerage – Re/Max Dawson Creek Realty

Open House – Parcel 4:

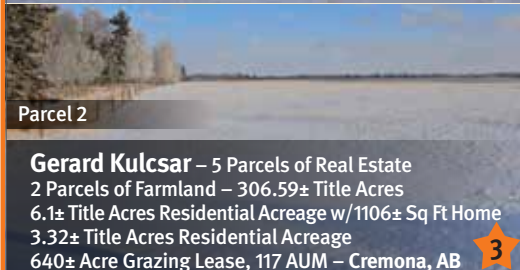
Mar 30 & Apr 13 – 4 to 6 pm



Parcel 4 – 1106± Sq Ft Mobile Home (renovated 2016)



Parcel 1 – \$3700 Surface Lease Revenue



Parcel 2

**Gerard Kulcsar – 5 Parcels of Real Estate**  
2 Parcels of Farmland – 306.59± Title Acres  
6.1± Title Acres Residential Acreage w/1106± Sq Ft Home  
3.32± Title Acres Residential Acreage  
640± Acre Grazing Lease, 117 AUM – Cremona, AB



Contact – Gerard Kulcsar: 403.369.6633  
Ritchie Bros. Real Estate – Jerry Hodge: 780.706.6652  
Brokerage: Ritchie Bros. Real Estate Services Ltd.

Property may be viewed without an appointment

**Wes Letawsky**

3 Parcels of Farmland – 452.34± Title Acres  
185± Acres Certified Organic – Colinton, AB



Contact – Wes Letawsky: 780.675.4519  
Ritchie Bros. Real Estate – Jerry Hodge: 780.706.6652  
Brokerage: Ritchie Bros. Real Estate Services Ltd.

Property may be viewed without an appointment

**Seven Three Two Investment Corp**

1 Parcel of Farmland – 157.45± Title Acres  
\$4300 Surface Lease Revenue – Bonnyville, AB



Contact – Dale Hammons: 780.826.0920  
Ritchie Bros. Real Estate – Jerry Hodge: 780.706.6652  
Brokerage: Ritchie Bros. Real Estate Services Ltd.

Property may be viewed without an appointment

**Real and Reta Chalifoux**

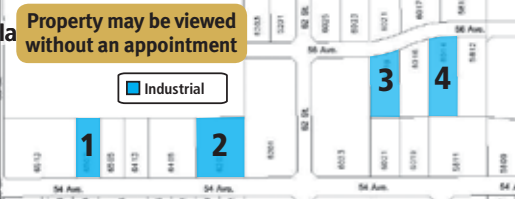
1 Parcel of Farmland – 159.88± Title Acres  
\$2900 Surface Lease Revenue – Thorild, AB



Contact – Real Chalifoux: 780.991.8698  
Ritchie Bros. Real Estate – Jerry Hodge: 780.706.6652  
Brokerage: Ritchie Bros. Real Estate Services Ltd.

# Real estate selling from the Edmonton April auction

**Property may be viewed without an appointment**



**Hammons Holdings Ltd**  
4 Parcels of Undeveloped Industrial Property  
0.99± Acres, 1.98± Acres, 1.27± Acres & 1.6± Acres – Bonnyville, AB

Contact – Dale Hammons: 780.826.0920  
Ritchie Bros. Real Estate – Jerry Hodge: 780.706.6652  
Brokerage: Ritchie Bros. Real Estate Services Ltd.

**Open House:**  
April 2 & 16 – 5 to 7 pm



**Superior Rentals 2009 Ltd**  
1 Parcel of Real Estate – 2.42± Title Acres  
6500± Sq Ft Shop & Office – Lac La Biche, AB

Contact – Louis Bourget: 780.826.0987  
Ritchie Bros. Real Estate – Jerry Hodge: 780.706.6652  
Brokerage: Ritchie Bros. Real Estate Services Ltd.


**Property may be viewed by appointment**



**823020 Alberta Ltd.**  
**Diamond M Convenience**  
1.19± Title Acres – 4500± Sq Ft Building  
Convenience Store & Salon – Linden, AB

Contact – Lloyd Miller: 403.850.7537  
Ritchie Bros. Real Estate – Jerry Hodge: 780.706.6652  
Brokerage: Ritchie Bros. Real Estate Services Ltd.


**Property may be viewed by appointment**



**Estate of Harry Veenstra**  
1 Parcel of Real Estate – 1.31± Title Acres  
5000± Sq Ft Commercial Abattoir – Haynes, AB

Contact – Tineke Jones: 403.550.3135  
Ritchie Bros. Real Estate – Jerry Hodge: 780.706.6652  
Brokerage: Ritchie Bros. Real Estate Services Ltd.

**Property may be viewed by appointment**



**Sally Howard**  
1 Parcel of Real Estate – 2.5± Title Acres  
1440± Sq Ft Home – Creston Valley, BC

Contacts – Corrine Wilcox: 250.428.2249; Sally Howard: 780.694.2287  
Ritchie Bros. Real Estate – Jerry Hodge: 780.706.6652  
Realtor® – Tom Moran PREC\*: 250.784.7090  
Brokerage – Re/Max Dawson Creek Realty

**Property may be viewed without an appointment**



**Dale Johnson – 2 Parcels of Real Estate**  
Commercial Lot – 0.51± Title Acres – Onoway, AB  
Residential Acreage – 2.76± Title Acres – Rich Valley, AB

Contact – Dale Johnson: 780.909.8600  
Ritchie Bros. Territory Manager – Alex Ginda: 587.983.8757  
Ritchie Bros. Real Estate – Jerry Hodge: 780.706.6652  
Brokerage: Ritchie Bros. Real Estate Services Ltd.



For auction and property details visit: [rbauction.com/realestate](http://rbauction.com/realestate)

# Equipment listings

## Construction

**PIPELAYERS:** 4- Caterpillar D6D w/Danlift Hyd • Caterpillar D6C w/Danlift Hyd • John Deere 650J w/Midwestern Hyd Combination Pipelayer • John Deere 550J w/Midwestern Hyd Combination Pipelayer.

**32- CRAWLER TRACTORS:** 3- Caterpillar D8T • 2- Caterpillar D8R • Caterpillar D8K • 2015 Caterpillar D7R LGP Series II Certified Rebuild • 2- 2010 Caterpillar D7R XR Series II • Caterpillar D7R XR • 3- 2018 & 2014 Caterpillar D6T LGP • 2014 Caterpillar D6T XW • 2013 & 2012 Caterpillar D6T LGP • 2012 Caterpillar D6T XW • 2- Caterpillar D6T LGP • Caterpillar D6R LGP Series III • 2- Caterpillar D6N LGP • Caterpillar D5H LGP • Caterpillar D5G LGP • 2013 John Deere 850J • 2012 John Deere 850J LGP • 2012 John Deere 750J • John Deere 750J LGP • John Deere 750C LGP • 2- John Deere 450J LGP.

**WHEEL LOADERS:** Caterpillar 988G • Caterpillar 950F Series II Logger • 2014 Caterpillar 938K • 2012 Hyundai HL780-7A • John Deere 724J • 2011 John Deere 644K.

**CRAWLER LOADERS:** Caterpillar 953 • Caterpillar 941B • 2012 Struck Magnatrac MH8000.

**12- SKID STEER LOADERS:** Bobcat 873 • 2013 Bobcat T750 • Bobcat 743B • 2010 Bobcat S650 • Bobcat S300 2 Spd • Bobcat S205 • 3- 2011 Bobcat S70 • 2012 Caterpillar 246C • 2012 John Deere 326D 2 Spd • Mustang 960.

**MULTI TERRAIN LOADERS:** ASV Positrack RC100 2 Spd High Flow Compact Track Loader • Bobcat MT52 Walk Behind Compact Track Loader • Caterpillar 257B2 • 2013 John Deere 329DT 2 Spd Compact Track Loader • 2013 John Deere 326D 2 Spd Compact Track Loader • 2014 Kubota SVL90-2 Compact Track Loader • Terex PT110F Forestry Compact Track Loader.

**15- MOTOR GRADERS:** 2- 2014 Caterpillar 160M2 AWD VHP Plus • 2012 Caterpillar 160M VHP Plus • Caterpillar 160H VHP • 2012 Caterpillar 140M2 AWD VHP Plus • 2012 Caterpillar 140M AWD • Caterpillar 140H • 2- 2014 & 2013 John Deere 872GP AWD • John Deere 872D AWD • John Deere 772G AWD • John Deere 772D AWD • John Deere 770G • 2014 Volvo G970.

**40- HYDRAULIC EXCAVATORS:** 2012 Case cx350c • 2- 2013 Caterpillar 349EL • 2015 Caterpillar 336FL • 2014 Caterpillar 336EL • 2017 Caterpillar 330FL • 2013 Caterpillar 329EL • 2- Caterpillar 328D LCR • 2015 Caterpillar 326FL • Caterpillar 325CL • 2018 Caterpillar 323FL • Caterpillar 320CL • 2- 2012 Hitachi ZX470LC-5B VG • 3- 2012 Hitachi ZX470LC-3 • 3- 2011 Hitachi ZX450LC-3 VG • Hitachi ZX330LC • 2012 Hitachi ZX290LC-5N • 2- 2014 Hitachi ZX250LC-5N • 2015 Hitachi ZX210LC-5B • 2- 2011 Hitachi ZX200LC-3 • Hitachi ZX120 • Hitachi EX120-3 • 2012 John Deere 470G LC • 2- 2015, 2012 & 2- 2011 John Deere 290G LC • John

Deere 270D LC • Komatsu PC600LC-8 Galeo VG • Komatsu PC270LC-7L • Unused - 2015 Komatsu PC170LC-10.

**HYDRAULIC EXCAVATORS - MATERIAL HANDLERS:** Fantuzzi MJ55RS 45000 Kg Container Handler.

**MOBILE EXCAVATORS:** Gradall G660B.

**MIDI EXCAVATORS:** 2012 Caterpillar 305.5E CR Mini Excavator • 3- Hitachi ZX55UR • 2014 John Deere 85D.

**MINI EXCAVATORS:** 2012 John Deere 35D • Kobelco SK024 • Komatsu PC40MR-1 • Komatsu PC30MR-1 • Komatsu PC12UU-2 • Kubota KX91-3SS • Kubota KX41-2 • Kubota K035.

**13- ARTICULATED DUMP TRUCKS:** 2- 2013 & 3- 2012 Caterpillar 740B 6x6 • 2011 Caterpillar 740 6x6 • Caterpillar 740 6x6 • Caterpillar 735 6x6 • 2- 2014 Caterpillar 730C Ejector 6x6 • 2- Caterpillar D350E Series II 6x6 • 2011 Terex TA300 6x6.

**DUMPERS:** Morooka MST2200 Crawler Dumper • 2- Morooka MST800 Crawler Dumper.

**CABLE PLOWS:** 2- Case 860 • Caterpillar D6D.

**TRENCHERS:** 2011 Ditch Witch RT16 Walk Behind.

**DIRECTIONAL DRILLS:** Ditch Witch JT3020.

**CRANES:** 5 Ton Overhead Crane • 2- Unused - Qty Of 2 3 Ton Hydraulic Engine Shop Crane • Kone S54D1N 18/6 Overhead Crane Trolley.

**VIBRATORY PADFOOT COMPACTORS:** Caterpillar CS563E • 2- 2012 Caterpillar CP74B • Dynapac CA25PD.

**VIBRATORY SMOOTH DRUM ROLLERS:** Bomag BW145DH-3 Vibratory Roller • 2015 Caterpillar CS56B Vibratory Roller • 2- Unused - 2018 Dynapac CA3500D Vibratory Roller.

**TANDEM ROLLERS:** Bomag BW90AD Tandem Vibratory Roller • Unused - 2018 Hamm HD10CVV.

**ASPHALT PAVERS:** Lee-Boy L7000T Crawler.

**SKIDDERS:** Timberjack 480B.

**ENVIRONMENTAL EQUIPMENT:** 2013 Primetech PT175 Crawler Mulcher

**JAW CRUSHERS:** CEC MS42X26 26 In. x 42 In. Crawler • Elrus M1442 2036 20 In. x 36 In. Portable Jaw Crushing Plant.

**CONE CRUSHERS:** CEC 450 Closed Circuit Portable Cone Crushing Plant • JCI 1400LS Portable • Rockman Trading.

**SCREEN PLANTS:** CEC 70 In. x 16 Ft 3 Deck Portable • 2013 Mormak Twin 6202 6 Ft x 20 Ft 2 Deck Portable Twin • Unused - 2019 Suihe 5 Ft x 7 Ft Screen.

**FEEDERS:** Portable Surge Bin • 2013 Mormak BF4248 Portable Low Pro • 2- 2019 Suihe GS18 8 Ft x 11 Ft Grizzly • Unused - 2019 Suihe GS15 8 Ft x 10 Ft Grizzly.

**16- CONVEYORS:** 36 In. x 65 Ft Stationary • Convey-All 36 In. x 60 Ft • Convey-All 36 In. x 58 Ft Stationary • 4- Unused - 2018 Hill Tops AE3660E 36 In. x 60 Ft Portable • Masaba 30 In. x 36

Ft Stationary • 4- Unused - 2019 Suihe 30 In. x 60 Ft Portable Radial Stacking Conveyor • 2- Unused - 2018 Suihe 26 In. x 60 Ft Portable • 2- Unused - 2019 Vickwest PRS8532 32 In. x 85 Ft Portable.

**SCALES:** 2010 Pacific Industrial PPRH5010410 80 Ft.

**CONTROL VANS:** 2013 Calrose Electric 53 Ft T/A Tower • Great Dane 53 Ft T/A.

## Trucks & trailers

**16- WINCH TRACTORS:** Kenworth T800B T/A • Kenworth T800B T/A Sleeper • 2- 2011 Kenworth T800 Tri Drive Sleeper • 2010 Kenworth T800 T/A Sleeper • Kenworth T800 T/A Sleeper • Kenworth C500B Day Cab T/A • Kenworth C500B T/A • Kenworth C500B T/A Sleeper • Peterbilt 378 T/A Sleeper • 2014 & 2011 Peterbilt 367 T/A Sleeper • Peterbilt 367 Tri Drive Sleeper • Sterling LT9500 T/A • 2013 Western Star HD6900 T/A • Western Star 4964S T/A Sleeper.

**HEAVY HAUL TRUCKS:** 2015 & 2013 Kenworth T800 Tri Drive Sleeper • 2016 Western Star 4900SA Tri Drive Sleeper • 2011 Western Star 4900SA Tri Drive • 2- Western Star 4900FA T/A Day Cab.

**102- TRUCK TRACTORS:** Freightliner M2112 Day Cab Truck Tractor (T/A) • 2013 & 2- 2012 Freightliner Coronado 132 Sleeper Truck Tractor (T/A) • 2015 Freightliner Cascadia 132 Truck Tractor (T/A) • 3- 2014 & 4- 2013 Freightliner Cascadia 125 Sleeper Truck Tractor (T/A) • 2014, 2- 2013, 2012 & 2011 Freightliner Cascadia 125 Day Cab Truck Tractor (T/A) • 5- 2014, 2013 & 2012 Freightliner Cascadia 125 Truck Tractor (T/A) • 2012 Freightliner Cascadia 125 Sleeper Truck Tractor (T/A) • Freightliner FLD120 Sleeper Truck Tractor (T/A) • Freightliner FLD120 Tri Drive • Freightliner Columbia 120 Sleeper Truck Tractor (T/A) • 2015 Freightliner CA113SLP Truck Tractor (T/A) • 2012 Freightliner Sleeper Truck Tractor (T/A) • Freightliner Argosy Sleeper Truck Tractor (T/A) • 2015 International 9900I Sleeper Truck Tractor (T/A) • 2- 2014 International 9900I Eagle Sleeper Truck Tractor (T/A) • International 9900I Eagle Sleeper Truck Tractor (T/A) • 2- 2015 International 9900 Sleeper Truck Tractor (T/A) • International 9400I Sleeper Truck Tractor (T/A) • 2011 International Prostar Sleeper Truck Tractor (T/A) • 2014, 2013 & 2012 International Prostar Plus Sleeper Truck Tractor (T/A) • 2- 2014 International Prostar Plus Eagle Sleeper Truck Tractor (T/A) • Kenworth T2000 Truck Tractor (T/A) • 2015 Kenworth W900L Sleeper Truck Tractor (T/A) • 2014 Kenworth W900 Sleeper Truck Tractor (T/A) • Kenworth W900 Truck Tractor (T/A) • Kenworth T800B Truck Tractor (T/A) • Kenworth T800B Day Cab Truck Tractor (T/A) • 3- Kenworth T800B Sleeper Truck Tractor (T/A) • 2- 2015 Kenworth T800 Tri Drive Sleeper • 2014 Kenworth T800 Tri Drive • 2- 2014 & 2013 Kenworth T800 Tri Drive Sleeper • 2012 Kenworth T800 Truck Tractor (T/A) • 2- 2012 Kenworth T800 Sleeper Truck Tractor (T/A) • 2- Kenworth T800 Truck Tractor (T/A) • 2015 Kenworth T680 Sleeper Truck Tractor (T/A) • 2012 Kenworth T660



Sleeper Truck Tractor (T/A) • 2- Kenworth T600 Truck Tractor (S/A) • Mack CL733 Truck Tractor (T/A) • 5- 2015 & 2013 Mack CXU613 Sleeper Truck Tractor (T/A) • 2015 Mack CHU613 Sleeper Truck Tractor (T/A) • 2014 Mack CH613 Tri Drive • 2015 Peterbilt 567 Tri Drive Sleeper • 2015 & 2010 Peterbilt 389 Sleeper Truck Tractor (T/A) • 2012 Peterbilt 388 Sleeper Truck Tractor (T/A) • Peterbilt 388 Sleeper Truck Tractor (T/A) • 2013 Peterbilt 386 Sleeper Truck Tractor (T/A) • 2- Peterbilt 378 Sleeper Truck Tractor (T/A) • Peterbilt 357 Tri Drive • Sterling A9500 Day Cab Truck Tractor (T/A) • 2- 2013 Volvo VNL64300 Day Cab Truck Tractor (T/A) • 2013 Volvo VNL64T430 Sleeper Truck Tractor (T/A) • 2012 Volvo VNL Day Cab Truck Tractor (T/A) • 2012 Volvo VNL Truck Tractor (T/A) • 2012 Volvo Sleeper Truck Tractor (T/A) • Volvo Sleeper Truck Tractor (T/A) • Volvo Truck Tractor (T/A) • Western Star 4900SA Truck Tractor (T/A) • Western Star 4900SA Tri Drive • Western Star 4900SA Tri Drive Sleeper • 2015 & 2- 2013 Western Star 4900FA Truck Tractor (T/A) • Western Star 4900FA Sleeper Truck Tractor (T/A).

**35- DUMP TRUCKS:** Chevrolet C6500 Dump Truck (S/A) • Ford F550 COE Dump Truck (S/A) • Ford F350 Dump Truck (S/A) • 2012 Freightliner 122SD Coronado Dump Truck (T/A) • Freightliner FLD120SD Dump Truck (T/A) • Freightliner FLC120 Dump Truck (T/A) • 2012 Kenworth T800B T/A Dump Truck (T/A) • 2014 Kenworth T800 Sleeper Dump Truck (T/A) • 2- Kenworth T800 Dump Truck (T/A) • Kenworth T600 Dump Truck (T/A) • 20- 2016 Kenworth T370 Dump Truck (T/A) • Mack CH613 Dump Truck (T/A) • Peterbilt 367 Sleeper Dump Truck (T/A) • 2- Sterling Acterra Dump Truck (T/A).

**PLOW TRUCKS & SANDERS:** Ford F550 Sander Truck • 2010 Freightliner M2112V T/A • 2012 Mack GU713 T/A Plow/Sander Truck • 3- Peterbilt 335 T/A Plow/Sander Truck • 2- Sterling LT8500 T/A Plow/Sander Truck • Western Star 4864FT/A Plow/Sander Truck.

**10- MIXER TRUCKS:** 3- 2012 International 7600 SBA Workstar Tri Drive • 3- International Navistar T/A • Kenworth T800 Tri Drive • Mack CTP713 Granite Tri Drive • Mack CH613 T/A Semi • Western Star 4900SA T/A Tri Drive.

**WATER TRUCKS:** Western Star 4900FA 17575 Litre T/A.

**TANK TRUCKS:** Freightliner FLD120SD 20123 Litre Tri Drive Pressure • Freightliner Tri Drive Hot Oil • International 9400 14956 Litre T/A • 2013 Kenworth T800 22000 Litre Tri Drive Sleeper • 2012 Kenworth T800 T/A Pressure • Kenworth T800 T/A Pressure Pumper • 2013 Mack GU713 T/A Pressure • Sterling LT9500 17791 Litre T/A.

**19- BOOM TRUCKS:** 2014 Dodge 5500HD 4x4 w/Effer 62/4S • 2014 Dodge 5500HD 4x4 w/Effer 65/4S • 2013 Dodge 5500HD Crew Cab 4x4 w/Palfinger PK8501 • 2012 Dodge 5500 4x4 Crew Cab Hiab 077 CLX • Dodge 5500 4x4 Hiab 077 CLX • 2012 Ford f550 Crew Cab 4x4 w/Fassi Micro M30A13 • Ford F550 4x4 w/Ferrari F560 A3 • Ford Louisville T/A w/National 300B • Freightliner M2106 w/Palfinger • International 8100 S/A w/RO TC70 •

International 2674 Crew Cab T/A w/Hiab 144B3CL • Kenworth T800B T/A T/A w/National 1100 • Kenworth C550 T/A T/A w/Weldco HL30TC70 • Peterbilt 367 Tri Drive • Peterbilt 357 T/A Tri Drive w/Weldco Beales WHL40 • Peterbilt 330 T/A w/Fassi F210A.25 • Sterling Acterra 4x4 w/Fassi • Volvo WB S/A w/Atlas 130.1 • Western Star 4900SA T/A Tri Drive w/QMC 8470S.

**DIGGER DERRICK TRUCKS:** GMC C7500 S/A • International 4700 S/A w/Terex Commander 4045 • Sterling Acterra T/A w/Terex Commander C6000.

**BUCKET TRUCKS:** Ford F550 w/Terex TL37M • Freightliner M2106 Crew Cab T/A w/Altec • Freightliner M2106 S/A • International 4300 Durastar S/A • Sterling Acterra S/A w/Lift-All LOM10552MS.

**19- VACUUM TRUCKS:** 2016 Caterpillar CT660S Tri Drive Hydro Vac Truck • Ford F700 S/A • 2011 Freightliner 4900SA Tri Drive • Freightliner M2106 S/A Combo • Freightliner FLD120SD Tri Drive Combo • International 7600 T/A • International 4900 S/A Combo • 2014 Kenworth T800 Tri Drive Sleeper Hydro Vac Truck • Kenworth T800 T/A Semi Vac • Kenworth T800 Tri Drive Hydro Vac Truck • Mack CV713 Granite T/A Hydro Vac Truck • Peterbilt 378 Tri Drive • 2012 Peterbilt 367 Tri Drive Semi Vac • 2011 Peterbilt 367 Tri Drive • Western Star 4900SB Tri Drive Hydro Vac Truck • 2012 & 2011 Western Star 4900SA Tri Drive Sleeper Combo • Western Star 4900SA 18262 Litre Tri Drive Sleeper • Western Star 4900FA 13183 Litre Day Cab T/A.

**FUEL & LUBE TRUCKS:** Ford F750 Extended Cab S/A Lube Truck • International 8100.

**23- MECHANICS TRUCKS:** 2011 Chevrolet Silverado 3500 Service Truck • Chevrolet 2500 Express Service Van • 2011 Dodge 5500HD Crew Cab 4x4 Service Truck • 2014 & 2012 Dodge 3500 Service Truck • 2010 Dodge 1500 Service Truck • Dodge Ram 3500 Crew Cab 4x4 Welding Truck • Ford F650 Service Truck • 2014 Ford F550 4x4 Service Truck • 2014 Ford F550 XLT 4x4 Service Truck • 2013 Ford F550 Service Truck • 2013 Ford F550 XLT Extended Cab 4x4 Service Truck • 4- 2012 Ford F550 4x4 Service Truck • 2011 Ford F550 XLT Service Truck • Ford F550 4x4 Service Truck • 2014 Ford F450 Service Truck • Ford F450 XL Service Truck • Ford F450 XLT 4x4 Service Truck • GMC C7500 S/A Service Truck • GMC 4x4 Service Truck.

**REEFER TRUCKS:** 3- 2012 Freightliner M2106 S/A • Freightliner M2106 T/A.

**UTILITY TRUCKS:** Chevrolet C5500 4x4 • Ford F550 Extended Cab 4x4 • Ford F450 XLT 4x4 • 2015 Ford F350 Extended Cab 4x4 • GMC 3500 Extended Cab 4x4 • 2013 Peterbilt 337 S/A Steam Truck.

**ROLLBACK TRUCKS:** Freightliner M2112 T/A • 2013 Freightliner M2106 T/A • 2011 International Lonestar T/A.

**16- VAN TRUCKS:** 2010 Ford F450 Van • 2014 Ford E450 • 2011 Ford E350 • Ford E150 Cargo Van • 2011 Freightliner M2112 T/A • 2- 2012 Freightliner M2106 S/A • GMC C7500 S/A • 2011 GMC

3500 Cube • 2012 & 2011 Hino 338 S/A • Hino 308 S/A • 2014 International 4300 Durastar S/A • 2010 International 4300 S/A • 2012 International PC805 Van • 2012 International TerraStar S/A.

**SANITATION TRUCKS:** American LaFrance Condor COE S/A Side Loader Garbage Truck.

**ROLLOFF TRUCKS:** Kenworth T800B Tri Drive • Volvo VHD T/A.

**13- CAB & CHASSIS TRUCKS:** Dodge 3500HD Crew Cab 4x4 • Ford L8000F S/A • Ford F550 4x4 • Ford F550 Crew Cab 4x4 • 2- Ford F550 Extended Cab 4x4 • 2010 Freightliner M2106 T/A • International 4300SBA Durastar Crew Cab S/A • International CF600 COE S/A • International CF600 S/A • 2- Kenworth T800 T/A • Sterling LT8511 T/A.

**46- FLATBED TRUCKS:** 2013 Chevrolet 3500HD Crew Cab 4x4 • Dodge 3500 4x4 • Ford F750 S/A • 2017 Ford F550 Extended Cab 4x4 • Ford F550 • Ford F450 Crew Cab 4x4 • Ford F450 XL Crew Cab 4x4 • 2- Ford F450 • 2016 Ford F350 Crew Cab 4x4 • 4- 2015 & 2014 Ford F350 • 2014 Ford F350 Crew Cab 4X4 • 2013 Ford F350 • 4- 2012 Ford F350 Crew Cab 4x4 • 2- 2011 & 2010 Ford F350 • 2010 Ford F350 XLT 4x4 • Ford F350 Crew Cab 4x4 • 2015 • 6- 2014 & 2012 Ford F250 • GMC C5500 • GMC 3500 4x4 • Hino FB1817 S/A • Hino FDSA-XB8 S/A • Hino S/A • International 7400 T/A • International 4400 T/A • International 4300 Durastar S/A • 2015 International Terrastar 4x4 • Kenworth T270 • Peterbilt 335 • Sterling Acterra S/A Sleeper.

**12- EMERGENCY VEHICLES:** Ford E450 Ambulance • Kenworth W900B T/A Fire Suppression Truck • Kenworth W900B Tri Drive Fire Suppression Truck • 2011 Kenworth W900 T/A Fire Suppression Truck • 2- Kenworth T300 S/A Shower Truck • Peterbilt 378 Tri Drive Fire Suppression Truck • 4- Peterbilt 378 T/A Fire Suppression Truck • 2012 Peterbilt 348 S/A Shower Truck.

**TRUCKS:** 2014 Ford F550.

**BUSES:** 2012 Chevrolet Express 1500 8 Passenger AWD Crew Carrier • 2011 & 2010 Ford E350 15 Passenger Crew Carrier • Ford E350 15 Passenger Crew Carrier • GMC C5500 30 Passenger S/A • GMC Bluebird 48 Passenger • GMC Bluebird B7 60 Passenger S/A Handicap • GMC Bluebird B7 48 Passenger S/A • International PC105CE 33 Passenger 4x4.

**40- LOWBOYS:** Arnes 50 Ton Tridem • Aspen LB65 2+2+2 65 Ton Extendable • Aspen FG60-24 24 Wheel Scissorneck • Aspen FG45-3 Tridem Scissorneck • Aspen 40 Ton Tridem Scissorneck • Aspen 24 Wheel Scissorneck • Aspen Tridem Extendable Double Drop • 2012 Deloupe Tridem • Doepker SN80904 Tridem Scissorneck • 2014 Doepker SN17146-S 40 Ton Tridem Scissorneck • Doepker 50 Ton 53 Ft Tridem Scissorneck • 2014 Doepker 40 Ton Tridem Scissorneck • 2- Edmonton Trailer 50 Ton Tridem Scissorneck • Fruehauf T/A • Gerrys T286 40 Ton Tridem Scissorneck • Gerrys 65 Ton 16 Wheel • 2015 Gerrys 55 Ton Scissorneck • 2- 2012 Gerrys 50 Ton Tridem Mid • Gerrys LB45 16 Wheel Double Drop • Gerrys 16 Wheel Scissorneck •

Gerrys Tridem Scissorneck • K-Line KLF301 Tridem Extendable • 2- 2013 K-Line KLF208 Tridem Extendable • 2- 2016 K-Line KFD109 68 Ft 3+3+1 Steerable • 2011 K-Line 15 Axle Steerable • K-Line 9 Axle Steerable • K-Line 3+3+3 Extendable • 2012 K-Line T/A Double Drop • Knight 50 Ton Tridem • 2017 Load Trail 25 Ft Hyd • Scheltema HRG-75-3A 85 Ton 3+3+2 Combination • Scona 50 Ft Tridem Trombone • Scona Tridem Scissorneck • 2- Trail King Tridem Extendable Double Drop • Westank 16+16+8 Double Drop.

**15- STEP DECK TRAILERS:** 2010 BWS 53ET3X-61-114 51 Ft Tridem • 2013 BWS 52 Ft Tridem • 2011 K-Line • Lode King 48 Ft Tridem • Lode King 32 Ft Lead Super B-Train • M & M 47 Ft T/A Trombone • 2013 Manac 13345A00 45 Ft Tridem • Manac 53 Ft Tridem • Manac 53 Ft Extendable • Manac 48 Ft Tridem Trombone • Manac 48 Ft Tridem • Manac 40 Ft Tridem • Mustang MH320X30 • 2014 Oasis 46 Ft T/A • Wabash Tridem.

**50- JEEPS:** T/A Dolly • S/A • Pin-On Axle • Aspen JT45 T/A • Aspen JT40 T/A Booster • Aspen TD20-2SS T/A Booster • Aspen T/A • Aspen S/A • 2013 Gerrys KJP203 T/A • Gerrys JT45-16 16 Wheel • Gerrys 16 Wheel Low Pro • Gerrys 16 Wheel • 2012 Gerrys 8 Wheel Low Pro • Gerrys 8 Wheel • Gerrys KLPB-1C S/A Booster • 2- Gerrys T/A Self-Steering Booster • Gerrys Fish Mouth Booster • 2016 K-Line 7877-1 S/A Booster • 2016 K-Line 7787-2 S/A Booster • 2016 K-Line KJP301 Tridem • 2- 2013 K-Line KBA104 S/A Booster • K-Line 40 Wheel Steerable Jeep Dolly • K-Line 40 Wheel Dolly • K-Line Tridem Steerable Booster • 2016 & 2011 K-Line Tridem • 2- 2011 K-Line Tridem Dolly • 2- K-Line Tridem • K-Line T/A Self-Steering Booster • 2- 2013 K-Line T/A • 2- K-Line T/A • K-Line S/A • 2013 Pacesetter T/A • Peerless JP-35-SW-2A T/A Log • Rotec R0JP4 S/A Bed • Scheltema LDD-3A Tridem • Scheltema EB-2A T/A Booster • 2- Scona T/A • 2015 Stellar T/A • Trail King T342B Pin-On Axle • Trail King Pin-on Axle • U-Built Tridem Derrick Dolly • Westank 16 Wheel.

**24- SUPER B-TRAIN HIBOYS:** 5- Doepker 32 Ft Lead • 5- Doepker 28 Ft Pup • Load King 32 Ft Lead • Load King 28 Ft Pup • 2- Lode King 32 Ft Lead • 2016 Lode King HGF30-2P Pup • 2016 Lode King HGF28-3L Lead • 2- Lode King 28 Ft Pup • 2015 Lode King Pup • 2015 Lode King Lead • 2010 Superior 32 Ft Lead • Superior 32 Ft Lead • 2010 Superior 28 Ft Pup • Superior 28 Ft Pup.

**32- HIBOYS:** 53 Ft • 2- Doepker 53 Ft Tridem • Doonan 53 Ft Tridem • 2- 2015 Dorsey 53 Ft Tridem • J C Trailers 53 Ft Tridem • K-Line • Load King PFD48-3 48 Ft Tridem • 7- Lode King 53 Ft Tridem • 2- Lode King 48 Ft Tridem • Lode King 48 Ft T/A • Lode King 28 Ft Super B-Train • 2015 Manac 53 Ft Tridem Trombone • 2- Manac 53 Ft Tridem • Manac 48 Ft Tridem • 2- Manac 48 Ft T/A • Manac T/A Combination • Reinke 48 Ft T/A Aluminum • Trailmobile 53 Ft • 2012 Trans Eagle 53 Ft T/A Combination • 2012 Trans Eagle 53 Ft T/A • Wabash.

**16- PNEUMATIC BULK TRAILERS:** 2- Fruehauf 1000 Cu Ft T/A • King 1100 Cu Ft Pup • King 1100 Cu Ft Lead • 2019 MAC

TR1250APB 1250 Cu Ft Tridem Aluminum • 8- 2015 & 2- 2014 Tremcar 1200 Cu Ft Tridem • 2014 Tremcar 1200 Cu Ft T/A.

**18- OILFIELD FLOATS:** 45 Ft x 9 Ft Tridem Picker • 35 Ft x 8 Ft 6 In. Tridem • Tridem • Aspen 48 Ft x 8 Ft 6 In. Tridem • Aspen 24 Wheel • Gerrys 16 Wheel • J C Trailer 48 Ft x 8 Ft 6 In. Tridem • JC Oilfield 48 Ft x 8 Ft 6 In. Tridem • Manac 10348205 50 Ft x 8 Ft 6 In. Tridem Picker Fl • 2013 Manac 10348A020 49 Ft x 9 Ft Tridem Picker • Peerless 50 Ton 51 Ft x 10 Ft 16 Wheel • Peerless 50 Ton 51 Ft x 10 Ft 15 Wheel Mid • Peerless 50 Ft 16 Wheel • Peerless 48 Ft x 8 Ft 6 In. Tridem • Scona 40 Ft x 9 Ft T/A • Scona 37 Ft x 8 Ft 6 In. T/A • 2- Trail-Eze 40 Ft x 8 Ft 6 In. T/A.

**LOG TRAILERS & RIGGING:** 10 Ft Log Bunk • 2014 & 2012 BWS 50 Ft x 9 Ft 6 In. Quad/A Hayrack • Peerless RT3060A8937 15 Ft x 8 Ft Tridem • Scona T/A Log Jeep • Superior 8 Ft 6 In. Short Wood Log Bunk.

**BOTTOM DUMP TRAILERS:** Decap 39 Ft Tridem • Raglan 32 Ft T/A Super B-Train Pup • Raglan 26 Ft Tridem Super B-Train Lead • 2014 R-Way T3923TRI 39 Ft Tridem.

**END DUMP TRAILERS:** 2016 Arnes 37 Ft Tridem • 2014 Arnes 31 Ft Tridem • 2015 Arnes 30 Ft Tridem • 2018 Cross Country 17 Ft Tridem Pup Trailer • Load Line 25 Ft Quad/A Gravel Wagon • 2011 Midland SK3400 38 Ft Tridem • Midland SK3400 Tridem • 2010 Trojan 26 Ft Quad/A Gravel Wagon.

**SIDE DUMP TRAILERS:** 2013 Arnes 15 Ft T/A Lead • 2014 Sidump'r SDR360 38 Ft Tridem • Sidump'r SDR360 38 Ft Tridem.

**20- CAR HAULER TRAILERS:** 2012 18 Ft x 6 Ft 8 In. T/A • 16 Ft x 6 Ft 10 In. T/A • 5- Unused - 2019 3 Star EC16 18 Ft x 6 Ft 8 In. T/A • 5- Unused - 2019 3 Star EC14 16 Ft x 6 Ft 8 In. T/A • 2016 Big Tex 14 Ft x 7 Ft T/A • Cottrell C5309 57 Ft x 8 Ft 6 In. T/A 7 Car • 2016 Oasis 22 Ft x 6 Ft 5 In. T/A • 2019 & 3- Unused - 2019 SWS AB4 16 Ft x 6 Ft 9 In. T/A • 2016 Trailtech 18 Ft x 6 Ft 6 In. T/A.

**REEFER TRAILERS:** Manac 90245002 • Utility 53 Ft x 8 Ft 6 In. Tridem • Utility 53 Ft x 8 Ft 6 In. T/A • Utility 53 Ft Tridem • 4- Utility 53 Ft T/A.

**STOCK TRAILERS:** Wilson Chamberlain 48 Ft T/A Cattle Liner.

**GRAIN & SILAGE TRAILERS:** Lode King HGF30-2 Prestige 30 Ft Super B-Train Pup Grain Trailer • Lode King HGF28-3 28 Ft Super B-Train Grain Trailer.

**33- VAN TRAILERS:** Alum-Line 26 Ft x 6 Ft 6 In. T/A Enclosed Trailer • 2011 Charimac 10 Ft x 6 Ft S/A Enclosed Trailer • Charmac 28 Ft x 8 Ft 6 In. T/A V-Nose Enclosed Trailer • CJAY 25 Ft x 8 Ft 4 In. T/A Enclosed Trailer • CM 27 Ft x 7 Ft 10 In. T/A Gooseneck Enclosed Trailer • Forest River CC822TA2 22 Ft x 7 Ft 9 In. T/A Enclosed Trailer • Forest River 28 Ft x 8 Ft 5 In. T/A Enclosed Trailer • 2011 Forest River 14 Ft x 8 Ft 5 In. T/A Enclosed Trailer • Great Dane 53 Ft T/A Heated • H&H 28 Ft x 8 Ft 6 In. T/A Gooseneck Enclosed Trailer • H&H 16 Ft T/A Enclosed Trailer • 2014 H&H Trailers 15 Ft x 7 Ft T/A Enclosed Trailer • 2011 Haulmark Grizzly 16 Ft x 8 Ft 6 In. Enclosed Trailer • 4- 2015

Milron 12 Ft x 6 Ft 8 In. T/A Insulated Enclosed Trailer • Mirage 29 Ft x 8 Ft 4 In. T/A Enclosed Trailer • Royal 20 Ft x 8 Ft 6 In. T/A Enclosed Trailer • 2017 Royal LT 16 Ft x 8 Ft T/A Enclosed Trailer • Unused - 2019 Royal Cargo LCHS29-612-86 12 Ft x 6 Ft S/A Enclosed Trailer • Unused - 2019 Royal Cargo LCHS29-612-72 13 Ft x 6 Ft S/A Enclosed Trailer • Starlight Cargo 22 Ft x 8 Ft 6 In. T/A Enclosed Trailer • Stoughton 53 Ft x 8 Ft 6 In. T/A Tool Crib • Stoughton 42 Ft x 8 Ft T/A Tool Crib • Utility 53 Ft T/A • Wabash 53 Ft x 8 Ft 6 In. T/A Heated • 2- Wabash 53 Ft x 8 Ft 6 In. T/A • Wabash 53 Ft T/A • Wabash 53 Ft • Wells Cargo EW2424 24 Ft x 8 Ft T/A Enclosed Trailer • 2012 Wells Cargo 22 Ft x 8 Ft 4 In. T/A Enclosed Trailer.

**VACUUM TRAILERS:** Advance Tridem Semi Vac Trailer • Scona Tridem • 2- 2013 Troxell Tridem.

**22- TANK TRAILERS:** 2- 2012 Alloy Custom Products 37320 Litre Tridem Bulk Nitrogen • columbia 31000 Litre Crude Oil Super B-Train • Columbia 27500 Litre Crude Oil Super B-Train • Columbia Remtec 58500 Litre Super B-Train Lead • Columbia Remtec 31000 Litre Super B-Train Lead • Columbia Remtec 27500 Litre Super B-Train Pup • Columbia Remtec Super B-Train Pup • Crown T/A • 2- 2015 Dragon 45992 Litre Tridem • Hamms T/A • Heil 63500 Litre Super B-Train Lead • 2013 Heil 46182 Litre Tridem • Heil 8350 Gallon Super B-Train Lead • Heil 7925 Gallon Super B-Train Pup • Heil Super B-Train Pup • Lazer Inox LA283WCR 28000 Litre 3/Axle • 2014 Lazer Inox Quad/A • Westank 33000 Litre T/A • Westank 5400 Litre B-Train Pup Water • Westank 5300 Litre B-Train Lead.

**28- EQUIPMENT TRAILERS:** 12 Ft x 7 Ft T/A • Unused - Logging T/A ATV Dump Utility Trailer • 2- 2012 ABU Trailers Utility Trailer • 2- Akota 36 Ft S/A Gooseneck • DEW Engineering and Devel • 2012 Diamond C 32 Ft x 8 Ft 5 In. T/A • 2011 Double A 20 Ft x 8 Ft 6 In. T/A • Double A T/A • Double A Crane Utility Trailer • Felling FT40-200315 T/A • 2014 Felling 30 Ft x 8 Ft 6 In. T/A Gooseneck • 2014 Haulmark GR85X16WT4 16 Ft x 8 Ft 6 In. Enclosed Utility Trailer • Hayshed 316SM 16 Ft x 8 Ft 6 In. T/A • JCTR 36 Ft Tridem • Linden T/A • 2017 Load Trail 34 Ft x 8 Ft 6 In. Tridem Gooseneck • PJ Trailers 25 Ft x 8 Ft 5 In. T/A Gooseneck • 2013 PJ Trailers 20 Ft x 8 Ft 6 In. T/A • 2013 PJ Trailers 20 Ft x 8 Ft 5 In. T/A • Trailtech H370PH-24 29 Ft x 8 Ft 6 In. Tridem • Trailtech H370 29 Ft x 8 Ft 6 In. Tridem • Trailtech TD220 30 Ft x 8 Ft 6 In. T/A Tilt Deck • Trailtech TD210 24 Ft x 8 Ft 5 In. T/A Pressure Test • Trailtech TD210 35 Ft x 8 Ft 6 In. T/A • Trailtech 32 Ft Tridem • Trailtech 24 Ft x 8 Ft 6 In. Tridem Pressure Test.

**REEL TRAILERS:** 2- Sauber S/A.

**CONTAINER TRAILERS:** Max-Atlas CCXT4053-3S 40 Ft - 53 Ft Tridem Container Chassis • Max-Atlas CCXT4053-3S 40 Ft - 53 Ft Tridem Extendable Container Chassis • MFM Heat Unit Tridem Extendable Container Chassis • MFM Industries 48 Ft - 53 Ft Tridem • Trailmobile 53 Ft T/A Container Chassis.

**27- TRAILERS:** 15 Ft x 6 Ft 8 In. T/A Breathing Air • 9 Ft x 4 Ft 7 In. T/A • Unused - 6 Ft 6 In. x 3 Ft 6 In. T/A Logging ATV Dump

## Upcoming auctions around the world

### Canada

Edmonton, AB	Feb 26–28
Toronto, ON	Mar 5–6
Chilliwack, BC	Mar 12
Brandon, MB	Mar 13
Lethbridge, AB	Mar 20
Regina, SK	Mar 27
Montreal, QC	Mar 27–28
Saskatoon, SK	Apr 8–9

### US

Orlando, FL	Feb 18–23
Chehalis, WA	Mar 5
Denver, CO	Mar 6
Fort Worth, TX	Mar 12–13
Nashville, TN	Mar 15
Los Angeles, CA	Mar 15–16

### International

Maltby, GBR	Feb 26–27
Moerdijk, NLD	Feb 28–Mar 1
Ocana, ESP	Mar 6–8
Polotitlan, MEX	Mar 8
Dubai, UAE	Mar 12–13

\* NOTE: NEW DATE

**BELTED AGRICULTURAL TRACTORS:** Case IH 9380 Track Tractor • 2013 Challenger MT855C Track Tractor.

**MFWD AGRICULTURAL TRACTORS:** Case IH MXM130 MFWD Tractor • John Deere 8210 MFWD Tractor • John Deere 7930 MFWD Tractor • John Deere 7800 MFWD Tractor • New Holland 8360 MFWD Tractor.

**UTILITY TRACTORS:** Kubota MX5000D 2WD.

**DISCS:** Ezee-On 1225M 12 Ft Offset.

**GRAIN HANDLING EQUIPMENT:** Feterl 12 In. x 34 Ft Transfer Auger.

**ALL TERRAIN VEHICLES:** Bombardier B15T • Foremost Nodwell 110 • 2014 Prinoth Panther T8.

**54- RECREATIONAL VEHICLES:** 19- 2014 & 2012 Club Car Precedent Electric Golf Cart • 4- Club Car Precedent Electric Golf Cart • 14- Club Car DS Golf Cart • Honda Fourtrax Quad • Rustler 25 Ft T/A Fifth Wheel Travel Trailer • Spartan Travel Supreme 45MS24 Class A 45 Ft T/A Motor Home • Sportster 37K 37 Ft T/A Fifth Wheel Travel Trailer • Yamaha Grizzly 600 4X4 Quad • 4- Yamaha ADR-A09 Golf Cart • 6- Yamaha ADR-A07 Golf Cart • Yamaha Golf Cart.

**UTILITY CARTS:** Clark MS CT50 Type G Tug Utility Cart • 2013 John Deere 850i Gator 4x4 Utility Vehicle • 2- 2013 & 2- 2012 John Deere 825i Gator 4x4 Utility Vehicle • 2010 Kubota RTV1100 4x4 Utility Vehicle • 2015 Polaris 570 Side By Side Utility Vehicle.

**DRILLS:** Core.

**35- DRILL PARTS & ACCESSORIES:** 2- Irontec w/Kenworth T800 T/A Swab Rig Well Service Unit • KSM w/Kenworth T800 Tri Drive Swab Rig Well Service Unit Shale Bins • 9 In. x 60 In. Cold Separator • Rig Mats • Qty Of 4 24 In. 10 Ton Modular Stands • Skid Mtd Dry Guard Gel Mixer Pump • Skid Mtd Discharge Hose Rack • Academy Services 40 Ft Sling Transport Basket. • 2- Baoji F800 Triplex Mud Pump • 2- CanRig PC3000 60 In. Wheel Catwalk Mobile System • Chase Process Pods • Chase / NOV Filter Pod Skid • Comet Welding 25 Ft x 12 Ft x 4 Ft 4 In. Rig Ramp • Custombuilt 400 Barrel Tank Cradle • 3- 2011 Fourstar Resources Separator Package Separator • Unused - Goldridge Manufacturing Frac Manifold • Total Combustion 1200 Incinerator.

**ITEMS INCLUDE:** 141- Pickups • Sports Utility Vehicles • Automobiles • Mowers • Walk Behind Compactors • Landscape Equipment • Sewer & Water • Utility Vehicles • Recreational Vehicles • Air Compressors • Industrial, Consumer & Light Generator Sets • Light Towers • Sign Boards • Welders • Pumps • Tanks • Concrete Equipment • Aggregate Equipment • Survey Equipment • Pipeline Equipment • Container Equipment • Industrial Plant Equipment • Engines • Crane Accessories • Equipment, Demolition & Recycling, Tractor & Truck Attachments • Industrial Items • Parts & Stationary Items – Construction & Transportation.

• S/A Pole Trailer • Abro Catterick T/A Dython • Altorfer 16 Ft x 5 Ft • 2015 Beothuck 20 Ft x 4 Ft 4 In. T/A • 2012 Cjay 14 Ft T/A Breathing Air • Custombuilt 15 Ft x 6 Ft 8 In. T/A Breathing Air • 2011 Custombuilt S/A Food • 2- 2011 Forest River 14 Ft T/A Breathing Air • London Tridem Mixer • Peerless CH402A 40 Ft x 8 Ft Process Unit Trailer • 2- 2015 Rainbow 12 Ft x 6 Ft 10 In. T/A Filtration • 2- 2012 Rainbow 10 Ft x 5 Ft 10 In. S/A Filtration • Scona 22 Ft x 8 Ft T/A Pole Trailer • Southland 12 Ft x 7 Ft T/A Dump

**29- MOBILE STRUCTURES:** 40 Ft x 10 Ft Storage Building • 20 Ft x 10 Ft Washcar • 2- Unused - 20 Ft Insulated Field Office • 2011 Alta-Fab 60 Ft x 12 Ft Eng/Eng Wellsite • 2- Alta-Fab 60 Ft x 12 Ft Eng/Eng Wellsite • Alta-Fab 60 Ft x 12 Ft Wellsite • Alta-Fab 10 Man 54 Ft x 10 Ft Sleeper • Alta-Fab 10 Man 54 Ft x 11 Ft Sleeper • 2- Atco 54 Ft x 11 Ft Sleeper • Atco 48 Ft x 10 Ft Office Trailer • 2- Atco Aggregate Testing 16 Ft x 8 Ft S/A Lab Trailer • Britco 60 Ft x 12 Ft Office Trailer • Corab 40 Ft x 10 Ft Office Trailer • Custom Structures 54 Ft x 10 Ft Office Trailer • Fabtec 16 Ft x 8 Ft Office Trailer • Glendale Aggregate Testing 30 Ft x 10 Ft T/A Lab Trailer • MFM Tridem Lab Trailer • 2019 MISB 60 Ft x 12 Ft Office Trailer • Northgate 36 Ft x 12 Ft Wellsite • QA Structures 56 Ft x 12 Ft Command Centre • 2014 Sentag 40 Ft x 12 Ft Office Trailer • 2014 Sentag 32 Ft x 10 Ft Office Trailer • Trailtech 16 Ft x 8 Ft T/A Field Office • Travco 40 Ft x 12 Ft Lab Trailer • Williams Scotsman 60 Ft x 12 Ft Field Office.

### Other items of interest

**15- TELESCOPIC FORKLIFTS:** Carelift ZB8044-44 • Dieci Apollo FLC190 4x4 • 2012 Genie GTH5519 4x4x4 • 2- 2018 Genie GTH2506 • 2012 JCB 550-170 • 2012 JCB 540-70AG+ • 2017 JCB 525-60 4x4x4 • 2013 JCB 512-56 Loadall • 2012 & 2011 JCB 510-56 • JCB 510-56 • Manitou MT1340 SLT 4x4x4 • Skyjack VR1056D • Terex TH842C 4x4x4.

**FORKLIFTS:** Artison FG25CGML • Clark CY200SCD • Hyster H155XL2 • Hyster S120XLS • Hyster LPG • Toyota 5FGC25.

**ELECTRIC FORKLIFTS:** Dockstocker DSS500HPC50TT • Raymond EASI • Raymond EASI R40TT • Raymond EASI0PC30TT.

**SCISSORLIFTS:** 2- 2011 Genie GS4390RT 4x4 • 2012 JLG 4069LE Electric • JLG 2646ES Electric • 2012 JLG 2630ES Electric • 2012 JLG 1930ES Electric.

**25- BOOM LIFTS:** 2- Aichi ISR602 Crawler • Aichi SR123J/ISR403J Crawler • 3- Aichi ISR70J Crawler • Aichi SR12B/ISR40 Crawler • Genie Z80 Articulated • Genie Z60/34 4x4 Articulated • 2- Genie Z-45/25 4x4 Articulated • Genie Z45/22 Articulated • 3- 2010 Genie GRC12 Electric • 2- 2010 JLG 1350SJP • 2012 & 2011 JLG 1250AJP • 2011 JLG 1250AJP Articulated • JLG 600SJC Crawler • 2010 JLG E450A • Snorkel TB85J 4x4 • 2010 Snorkel TB65J 4x4 • Snorkel TB-A60RDZ 4x4.

**4WD AGRICULTURAL TRACTORS:** Case 4490 4WD Tractor.



4 – Caterpillar D6D w/Danlift & Caterpillar D6C w/Danlift



2015 Caterpillar D7R LGP Series II Certified Rebuild



2014 Caterpillar 938K



Western Star 4900SA w/QMC 8470S



2014 Kenworth T800 Hydro Vac



2014 Peterbilt 367 Winch & 2016 Arnes 37 Ft



8 of 20 – 2016 Kenworth T370

See complete auction and equipment information on our website

[rbauction.com](http://rbauction.com)

Equipment videos, photos, auction news and more.  
Like us on [facebook.com/RitchieBros](https://www.facebook.com/RitchieBros)



Scan using your device's camera or a QR code reader.

Edmonton, AB | February 26–28, 2019 (Tue–Thu)

[rbauction.com](http://rbauction.com)

**rb RITCHEE BROS.**  
Auctioneers®