



6 – 2016 & 3 – 2015 Caterpillar 232D



2012 Wacker Neuson WL50



2009 Kenworth W900



3 of 4 – 2014 International 4300SBA DuraStar



3 – 2014 & 2013 Caterpillar 430FST 4x4

rb RITCHIE BROS.
Auctioneers®

60
YEARS

North Franklin, CT

December 17, 2018 (Monday)

Unreserved public auction

ACCEPTING CONSIGNMENTS, CONTACT US NOW

rbauction.com/North-Franklin

North Franklin, CT

December 17, 2018

Monday 8:00 am

Phone: **860.642.4200**

Fax: 860.642.2053

Auction location: 275 Route 32,
North Franklin, CT 06254

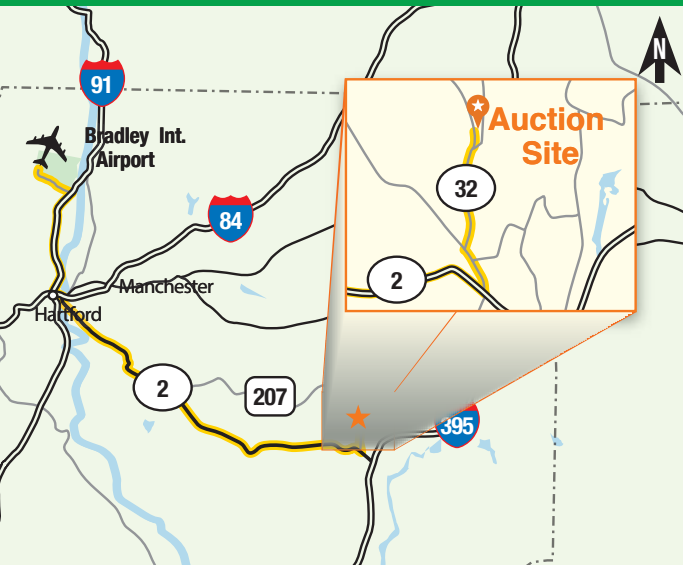
1,025+ items & counting

Bid in person or online

On-site registration starts: Dec 15 (Sat)

Inspection hours: Mon–Fri, 8 am–4:30 pm

Items must be removed by: Jan 2 (Wed)



Car rentals

Take advantage of exclusive rental car discounts.

AVIS code: C039702 | **Budget code:** A062002

Auction highlights

Phase 1 retirement sale for:

Capital Rentals LLC

Retirement sale for:

Venuti Enterprises Inc.

Equipment from:

Penske

and other owners



Visit rbauction.com for complete auction information



Full equipment listings, more photos and detailed equipment information



New additions to each auction – items added daily!



Deposit and payment information, including financing, wire transfer accounts and taxes



Full auction schedule, with times and lot numbers



Maps, hotels and other local services

Auction notes

- ▶ Every item is sold 'as is, where is'
- ▶ International and online bidders – you may need to place a refundable deposit before you bid – check the auction details on our website for more information
- ▶ Transaction fee: (a) 10% on all lots selling for \$5,000 or less, (b) 3.85% on all lots selling for over \$5,000 up to \$33,500, with a minimum fee of \$500 per lot or, (c) \$1,290 on all lots selling over \$33,500.

Directions to auction site

Bradley International Airport: Travel onto Schoephoester Road. Continue onto CT-20E/Bradley International Airport Con for 2.6 miles. Merge onto I-91 S toward Hartford for 9.8 miles. Take exit 30 for I-84E for 0.5 miles. Take exit 55 and continue onto CT-2 E for 23.4 miles. Keep left at the fork to continue on CT-2 E/Hwy 2 E for 11.3 miles. Take exit 27 for CT-32 N toward Yantic/Willimantic. Take a sharp right into CT-32 N/W Town Street and travel for 2.7 miles.



Caterpillar D5H



Caterpillar D5N XL

It's back for a limited time only

NO PAYMENTS
FOR
120 DAYS*
Apply today

*OAC. Terms and conditions apply.

Call **1.855.331.7237** or visit rbauction.com/Flex



Caterpillar D8H



Dresser TD15E



International-Dresser TD15C



Komatsu WA470-3A



Komatsu WA450-2



Komatsu WA380-1



Volvo-Michigan L120



Volvo L180C



Samsung SL250-2



Caterpillar 973



Bobcat S130



Caterpillar 256C



Caterpillar 226B2



2013 New Holland L225 2 Spd



2013 Boxer 320



2015 Caterpillar 289D 2 Spd



2011 Terex PT30



Champion 710A Series III



2010 Kobelco SK235SRLC-2 Acera



Komatsu PC400LC-6LK Avance



Komatsu PC360LC-3



Komatsu PC360LC



Komatsu PC150LC-6K



Samsung SE280LC-2



Samsung SE240LC-3



2011 Caterpillar 305DCR



2009 Komatsu PC50MR-2 Galeo



Yanmar ViO45-5



2013 Terex TC16



Volvo A30C 6x6



2010 Case 580SM Series 3 4x4



Ford-New Holland 675D 4x4



1 of 3 - 2013 Kubota BX25D 4x4



P & H Omega 35 35 Ton 4x4x4



Ingersoll-Rand SD100D



Ingersoll-Rand SD45DTF



Caterpillar CB434



Ingersoll-Rand DD30



2014 Toro STX26



Vermeer TG7000



Powerscreen Powergrid 8 x 10 Ft 2 Deck



Wildcat 626 Cougar 6 x 26 Ft Trommel



Capacity TJ5000



2 of 12 - 2012 & 2 of 3 - 2011 Freightliner Cascadia



2012 Freightliner Cascadia



2012 International ProStar+



2 of 3 - 2011 International ProStar Premium



Kenworth T800



Mack CH613



2011 Mack CXU613 Pinnacle



Peterbilt 359 & Trail King TK1000HDG



Kenworth T800



Kenworth T800



2 - Oshkosh S2346 8x6



Chevrolet 3500HD 4x4



Ford F450 XL



Sterling LT8500 w/Prentice 2124-BC 8523 Lb



International 4900 w/PM 12021 12125 Lb



Ford F750 XL w/Versalift 56910



Ford F450 4x4 w/Versalift T3300N02



3 of 4 – Ford E350



4 of 5 – GMC C7500 w/Altec LRV55



Freightliner FL80 4x4 w/Altec AM55



International 4300SBA w/Altec AM55



International 4300SBA w/Aerial Lift AL655351L4H



1 of 3 – 2013 & 3 – 2012 Freightliner M2 Business Class



3 of 5 – 2015 Isuzu NQR



International 4900



2010 Hino 338



International 4300SBA w/American HA15012036



4 of 9 – 2012 Freightliner M2 Business Class



4 – 2013 Isuzu NPRHD



2014 & 2013 Hino 268



2 – 2011 Chevrolet Equinox LT AWD



International CF600 Beverage



2 – 2014 & 3 of 4 – 2012 Ford F150 XL



Trail King TK70HG482 35 Ton 48 Ft



MAC 38 Ft Aluminum



GMC T7500



Caterpillar TH220B 7000 Lb 4x4x4



Lull 1044C54 Series II 10000 Lb 4x4x4



Lull 844C42 Highlander 8000 Lb 4x4x4



2 - Genie S85 4x4



Bombardier SW48 Snow Cat



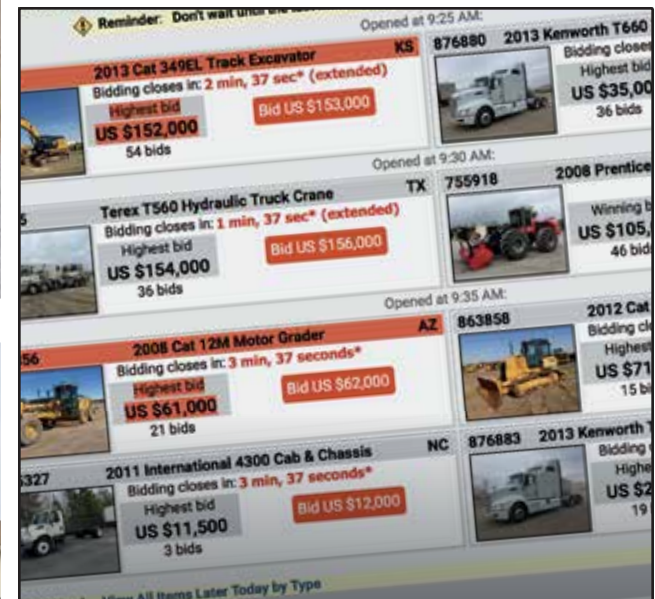
JLG 1250AJP SkyPower 4x4x4



Unused - 2017 Smithco Spray Star 1008D



Unused - 2017 Smithco Sweep Star V62



Explore More Equipment

Check IronPlanet's weekly online equipment auctions

ironplanet.com



Equipment listings

Construction

CRAWLER TRACTORS: 2- Caterpillar D8H • Caterpillar D5N XL • Caterpillar D5H • Dresser TD15E • International-Dresser TD15C • Komatsu D37E-2.

12- WHEEL LOADERS: Caterpillar IT28G • Fiatallis 645B • Halla HA380E • John Deere 304J • Komatsu WA470-3H • Komatsu WA450-2 • Komatsu WA380-1 • 2009 Komatsu WA320-6 • Samsung SL250-2 • Volvo L180C • Volvo-Michigan L120 • 2012 Wacker Neuson WL50.

CRAWLER LOADERS: Caterpillar 973.

17- SKID STEER LOADERS: 3- 2015 Bobcat S570 • 2- Bobcat S130 • Caterpillar 256C • 6- 2016 & 3- 2015 Caterpillar 232D • Caterpillar 226B2 • 2013 New Holland L225 2 Spd.

MULTI TERRAIN LOADERS: 2013 Boxer 320 Walk Behind Mini Compact Track • 2- Boxer Brute Walk Behind Mini Compact Track • 2015 Caterpillar 289D 2 Spd Compact Track • 2013 & 2011 Terex PT30 Compact Track • 2014 Toro TX427 Mini Compact Track.

MOTOR GRADERS: Champion 710A Series III.

11- HYDRAULIC EXCAVATORS: Caterpillar 245D • John Deere 330C LC • John Deere 200C LC • 2012 John Deere 135D • 2010 Kobelco SK235SRLC-2 Acera • Komatsu PC400LC-6LK Avance • Komatsu PC360LC-3 • Komatsu PC360LC • Komatsu PC150LC-6K • Samsung SE280LC-2 • Samsung SE240LC-3.

MIDI EXCAVATORS: 2011 Caterpillar 305DCR • Komatsu PC50MR-2 Galeo • Yanmar Vi045-5.

MINI EXCAVATORS: IHI 9NX2 Electric Micro • Kubota K008T4 • 2014 & 2013 Terex TC16.

ARTICULATED DUMP TRUCKS: Volvo A30C 6x6.

10- TRENCHERS: Barreto E924HM-4MS • 2- Barreto E924HM-4MS Walk Behind • Barreto 912 Walk Behind • 2012 Ditch Witch RT16 Walk Behind • 3- 2013 & 2012 Toro TRX20 Walk Behind Crawler • Vermeer 7550 Ride On Trencher/Cable Plow.

13- LOADER BACKHOES: 2010 Case 580SM Series 3 4x4 • Caterpillar 446D • 3- 2014 & 2013 Caterpillar 430FST 4x4 • 2014 & 2013 Caterpillar 430FIT 4x4 • Ford-New Holland 675D 4X4 • 2014 & 3- 2013 Kubota BX25D Mini.

ROUGH TERRAIN CRANES: P & H Omega 35 35 Ton.

CRAWLER CRANES: Koehring 405.

VIBRATORY SMOOTH DRUM ROLLERS: Ingersoll-Rand SD100D • Ingersoll-Rand SD45DTF • Ingersoll-Rand DD30.

TANDEM ROLLERS: Caterpillar CB434 Vibratory.

ROLLERS: .

WALK BEHIND COMPACTORS: Bomag BPR4555D Plate • Bomag BW65T Trench • Multiquip MVC90L • 4- Unused - Mustang LF88 Plate • Unused - Mustang ML80S Jumping Jack.

ASPHALT EQUIPMENT: Aeroil EPR-52 Infrared Heater • Roadtec Eagle-10 10 Ft - 20 Ft Screed.

ENVIRONMENTAL EQUIPMENT: 2012 Altec DC610 Portable Portable Chipper • 11- 2012 Altec DC610 Portable Chipper • Bandit 150 Portable Chipper • 2- 2014 Toro STX26 Crawler Walk Behind Stump Grinder • Vermeer TG7000 Portable Tub Grinder • 2013 Vermeer BC1800XL Chipper • 2- 2012 Vermeer BC1500 Portable Chipper.

JAW CRUSHERS: Parker 20 In. x 36 In.

CONE CRUSHERS: Symons 3378-2725 36 In. Portable Crushing Plant.

SCREEN PLANTS: FLO-CAIT L20 Portable • Powerscreen Warrior 1800 Crawler • Powerscreen Chieftain 1200D 5 x 12 Ft Portable • Powerscreen Powergrid 8 x 10 Ft Deck Portable • Wildcat 626 Cougar 6 x 26 Ft Portable Trommel.

17- CONVEYORS: 24 In. x 50 Ft Portable Feed Radial Stacking • 24 In. x 50 Ft Portable Radial Stacking • 24 In. x 40 Ft Portable Radial Stacking • 8- Unused - 2018 Better BE3660C 36 In. x 60 Ft Portable Radial Stacking • Powerscreen Portable Radial Stacking • Wendell 30 In. x 80 Ft Radial Stacking • Wendell 30 In. x 60 Ft Portable Radial Stacking • Wendell 24 In. x 60 Ft Portable Radial Stacking • Wendell 24 In. x 50 Ft Portable Radial Stacking • Wendell 24 In. x 40 Ft Portable Radial Stacking.

SCALES: Unused - 10000 Lb Platform.

AGGREGATE EQUIPMENT: 2- Unused - 2018 Paladin Permanent Suspended Magnet.

Trucks & trailers

37- TRUCK TRACTORS: Capacity TJ5000 Terminal • 2012 Freightliner Cascadia Sleeper T/A • 2012 Freightliner Cascadia Day Cab S/A • 13- 2012 & 3- 2011 Freightliner Cascadia Day Cab T/A • 3- 2011 International ProStar Premium Day Cab T/A • 2011 International ProStar Day Cab T/A • 2012 International ProStar+ Sleeper T/A • 2011 International ProStar+ Day Cab S/A • 2009 Kenworth W900 Day Cab T/A • Kenworth T800 Day Cab T/A • 2011 Mack CXU613 Pinnacle Day Cab T/A • Mack CH613 Day Cab T/A • Mack T/A • Ottawa 30 Terminal • 3- Peterbilt 379 Sleeper T/A • Peterbilt 359 Day Cab T/A • 2- 2012 Volvo VNL670 Sleeper T/A.

DUMP TRUCKS: Ford F800 S/A • Ford F450 XL S/A • Freightliner FLD112 T/A • GMC C7000 S/A • International 4900 S/A • 2- Kenworth T800 Tri/A • Mack DM685 S/A.

PLOW TRUCKS & SANDERS: Ford F800 S/A Sander.

MIXER TRUCKS: 2- Oshkosh S2346 8x6 Front Discharge.

BOOM TRUCKS: International 4900 T/A w/PM 12021 12125 Lb • Sterling LT8500 T/A w/Prentice 2124-BC 8523 Lb.

17- BUCKET TRUCKS: Ford F750 XL w/Versalift Tree Trimmer • Ford F600 • Ford F450 XL 4x4 w/Versalift T3300N02 • Ford E350 w/ETI ETT29XNV Van • Ford E350 w/Versalift Van • Ford E350 w/Versalift VANTEL29N Van • Freightliner FL80 4x4 w/Altec AM55 • GMC C7500 w/Altec LRV55 Tree Trimmer • 4- GMC C7500 S/A w/Altec LRV55 Tree Trimmer • International 4700 • International 4700 S/A w/Altec L42A • 2012 International 4300SBA S/A w/Terex/Telelect Hi-Ranger HR50 • International 4300SBA S/A w/Aerial Lift AL-655351L4H Tree Trimmer • International 4300SBA S/A w/Altec AM55.

VACUUM TRUCKS: Volvo FE COE S/A.

SERVICE TRUCKS: 2012 & 2011 Chevrolet 3500HD • 2011 Ford F350 • GMC 3500HD.

11- REEFER TRUCKS: 3- 2013 & 3- 2012 Freightliner M2 Business Class S/A • 5- 2013 Isuzu NQR COE S/A.

UTILITY TRUCKS: Chevrolet 3500HD Extended Cab 4x4 • Chevrolet 2500HD • Dodge 3500 4x4 • Ford F350 XL 4x4 • 2012 Ford F250 Extended Cab • International 4900 T/A Railroad.

25- VAN TRUCKS: Chevrolet 3500 Express • 8- 2012 Freightliner M2 Business Class S/A • Freightliner M2 Business Class S/A • GMC W5500 COE Crew Cab S/A • 2013 & 2010 Hino 338 S/A • International 4700 S/A • 4- 2014 & 2- 2012 International 4300SBA DuraStar S/A • 2012 International 4300 DuraStar S/A • 4- 2013 Isuzu NPRHD COE S/A.

ROLLOFF TRUCKS: International 4300SBA S/A Hook.

CAB & CHASSIS TRUCKS: Ford LNT800 • Ford F800 S/A • International 4700 S/A.

11- FLATBED TRUCKS: 2012 Chevrolet 3500HD • GMC 3500 • 2014 & 2013 Hino 268 S/A • International 4900 S/A • International 4600 Dump • Isuzu NQR COE S/A • Isuzu NQR COE • 2012 & 2010 Isuzu NPR COE • Isuzu FTR COE.

TRUCKS: Blue Bird Vision Attenuator Bus • Ford F550 4x4 Chip • International CF600 COE S/A Beverage.

SPORTS UTILITY VEHICLES: Chevrolet Tahoe 4x4 • 2- 2011 Chevrolet Equinox LT AWD • 2- 2012 Chevrolet Equinox LS AWD • Lincoln • Mitsubishi Endeavor LS AWD.

23- PICKUPS: 2009 Chevrolet 2500HD 4x4 • 2016 Chevrolet Silverado 1500 • 2016 Chevrolet 1500 Z71 Crew Cab 4x4 • 2010 Chevrolet Colorado • 2011 Ford F250 Extended Cab 4x4 • Ford F250 Crew Cab 4x4 • 2- 2014 & 4- 2012 Ford F150 XL • Ford F150 • 5- 2011 Ford Ranger Extended Cab • 4- Ford • GMC 2500HD 4x4.

AUTOMOBILES: 2011 Ford E350 Van • Ford E350 Van • GMC Savana G3500 Van • 2012 GMC Express 2500 Van • 2- 2011 Lincoln Town Car Executive Limousine • Subaru Legacy Outback Wagon AWD.

LOWBOYS: Talbert • Trail King TK100HDG 50 Ton.

STEP DECK TRAILERS: Trail King TK70HT482 35 Ton 48 Ft T/A.

JEEPS: Custombuilt S/A Dolly.

LOG TRAILERS & RIGGING: 2016 & 2015 Pitts LP40-4L 40 Ft T/A.

END DUMP TRAILERS: Hobbs 30 Ft Tri/A • MAC 38 Ft T/A Aluminum • Summit 28 Ft Tri/A.

CAR HAULER TRAILERS: Boydston 9 Car.

VAN TRAILERS: Great Dane 7311TPSA 48 Ft x 102 In. T/A • Hyundai VI2530152AJS 53 Ft x 102 In. T/A.

32- EQUIPMENT TRAILERS: 12 Ft x 6 Ft 8 In. S/A • 2013 Barreto 12 Ft x 4 Ft S/A • 2- 2012 Barreto E4X6TBT • 2013 Barreto • Beck 11 x 6 Ft T/A • Big Tex 18 x 7 Ft T/A • 2013 Cross Country • 2012 Ditch Witch S1A • 2016 Econoline TP1025TE 25 Ft x 8 Ft 6 In. T/A Tilt • Flore 10T 20 x 8 Ft T/A • 2019 Forest River Auto Master 46 Ft Tri/A Enclosed Utility • 2010 Hudson • 2014 & 2013 MMDI 510RCMPH • 2013 MMDI 510RCMPH 10 x 5 Ft T/A • 2- 2013 & 2012 MMDI 510RCMPH 10 Ft x 5 Ft

4 In. T/A • 3- 2012 MMDI 510RCMPH 10 x 5 Ft S/A • 2012 MMDI 10 x 5 Ft S/A • 2013 MMDI 10 x 5 Ft • 2013 Pro Hauler 47RVX9B • 2- 2013 & 2012 Pro Hauler 47RVX9 • 2013 Teske 22979 • 2- 2013 Teske 22979 5 Ft 6 In. x 4 Ft 2 In. S/A • 2013 Teske.

TRAILERS: Steco SEC38698 38 Ft x 102 In. T/A Ejector Refuse.

23- MOBILE STRUCTURES: Unused - 2018 Arctic Shelter 100 Ft x 50 ft x 26 Ft Peak Double Truss Storage Building • Unused - 2018 Arctic Shelter 80 Ft x 40 ft x 24 Ft Peak Double Truss Storage Building • Unused - 2018 Arctic Shelter 80 Ft x 30 ft x 22 Ft Peak Double Truss Storage Building • Unused - 2018 Arctic Shelter 70 Ft x 30 ft x 22 Ft Peak Double Truss Storage Building • Unused - 2018 Arctic Shelter 60 Ft x 30 ft x 22 Ft Peak Double Truss Storage Building • Unused - 2018 Arctic Shelter 40 Ft x 30 ft x 22 Ft Peak Double Truss Storage Building • Unused - 2018 Suihe S408022DP 80 Ft x 40 Ft x 22 Ft Double Trusse Storage Building • Unused - 2018 Suihe S408020P-PE 80 Ft x 40 Ft x 20 Ft Peak Storage Building • Unused - 2018 Suihe S308515P-PE 85 Ft x 30 Ft x 15 Ft Peak Storage Building • Unused - 2018 Suihe S306515P-PE 65 Ft x 30 Ft x 15 Ft Peak Storage Building • 2- Unused - 2018 Suihe S306020DP 60 Ft x 30 Ft x 20 Ft Double Trusse Storage Building • Unused - 2018 Suihe S304015P-PE 40 Ft x 30 Ft x 15 Ft Peak Storage Building • 4- Unused - 2018 Suihe 203012P-PE 30 Ft x 20 Ft x 12 Ft Peak Storage Building • 2- Unused - 2018 Suihe C4040-PE 40 Ft x 40 Ft Dome Container Storage Building • 3- Unused - 2018 Suihe C2040-PE 40 Ft x 20 Ft Dome Container Storage Building • Unused - 2018 Suihe C2020-PE 20 Ft x 20 Ft Dome Container Storage Building.

Other items of interest

TELESCOPIC FORKLIFTS: Caterpillar TH220B 7000 Lb 4x4x4 • Lull 1044C54 Series II 10000 Lb 4x4x4 • Lull 1044B • Lull 844C42 Highlander 8000 Lb 4x4x4 • Lull 644 Highlander II 6000 Lb 4x4.

ROUGH TERRAIN FORKLIFTS: Yale D3P220D0S 10500 Lb.

13- FORKLIFTS: Clark GPX30C 4900 Lb • Moffett M5500 N4W 5500 Lb Truck Mounted • Moffett M5000 4W 5000 Lb Truck Mounted • 2- Nissan Optimum 60 • 3- 2013 Nissan CF40LP • Princeton E2-3RVX 5000 Lb Truck Mounted • Stone LJ100 1000 Lb Walk Behind Block • Toyota 7FGU25 3650 Lb • Toyota 7FGCU20 3150 Lb • Yale GLC040AF-NUAV061 2500 Lb.

12- SCISSORLIFTS: Genie GS2668 Rough Terrain • 2- Genie GS1930 Electric • Grove SM2532BE Electric • JLG 1930ES • JLG 260ES • MEC 2548HT Electric • MEC 1932ES Electric • Skyjack SJ8841 Rough Terrain • Skyjack Electric • Upright X20W Electric • Upright Electric.

29- BOOM LIFTS: 6- Bil-Jax XLT1571 Electric Personnel Lift • 2- Genie S85 4x4 • Genie S80 4x4 • 2011 Genie AWP30S Electric Personnel Lift • 2- 2009 Genie GR20 Electric Personnel Lift • 2- 2009 Genie GR15 Electric Personnel Lift • JLG 1250AJP SkyPower 4x4x4 Articulated • 4- 2010 & 2- 2009 JLG 1230ES Electric Vertical Mast Lift • JLG 1230ES Electric Vertical Mast Lift • JLG 400S 4X4 • 2012 JLG T350 Tow Behind Articulated • JLG 30AM Electric Vertical Mast Lift • 2009 JLG 20MVL Electric Vertical Mast Lift • JLG 12SP Electric Personnel Lift • Terex TB60 • Upright TM12 Electric Vertical Mast Lift.

ANIQUE TRACTORS: Farmall 806 4WD.

LANDSCAPE EQUIPMENT: Unused - 15 Ft Sprayer Boom • Qty of Weed Wackers • 6- Unused - Qty of Tumbled Stone • Unused - Qty of Smithco Parts • Qty of Landscape Machine Parts • 3- Qty of Land-

scape Equipment. • Unused - Qty of Landscape Equipment Attachments • 2- Qty of Jacobsen Parts • Qty of Harvester Stands • Qty of Cushman Parts • Unused - Qty of Assorted Bluestone • 6- Unused - Qty of Stone • 7- Unused - Qty of Bluestone • Craftsman 247770110 Leaf Vac • ExMark LHP5223KA Landscape Mower • Unused - Full-Vision ROPS. • Isuzu NRR COE S/A Tree & Lawn Spray Truck • Isuzu NQR COE S/A Tree & Lawn Spray Truck • 2- Jacobsen 522A Greens King Walk Behind Landscape Mower • Jacobsen PGM22 Walk Behind Landscape Mower • Jacobsen Walk Behind Landscape Mower • Kanaflex TV40 8 In. Remote Hose • 2012 Kut-Kwick SSM3872D Slopemaster Ride On Landscape Mower • L.T. Rich Z Spray Ride On Zero Turn Sprayer • Unused - National I-Edge Walk Behind Specialty Landscape Mower • 2011 Planet Air Tri-fecta 50 Portable Lawn Aerator • Qty of Scotts Broadcast Spreaders • Unused - 2017 Smithco 7580 Tournament Ultra Ride On Greens Roller • 2009 Smithco 7570 Electra 36 In. Ride On Greens Roller • Unused - 2016 Smithco 7000 Tournament Ultra XXL Ride On Greens • Unused - 2017 Smithco Spray Star 1008D Ride On Golf Course Sprayer • Unused - 2017 Smithco Sweep Star V62 Portable Lawn Sweeper • Unused - Smithco 15 Ft Sprayer Boom • Smithco Sand Rake • Unused - Smithco Disc • Toro Groundsmaster 3500D Ride On Mower • Toro 2000D Reelmaster Ride On Landscape Mower • Yard Machines 31A240762 21 In. Snow Blower.

LIVESTOCK EQUIPMENT: 2018 Suihe 14 Ft Wrought Iron Gates.

UTILITY CARTS: Cushman-Jacobsen.

SNOW EQUIPMENT: Bombardier SW48 Snow Cat Crawler Sidewalk Plow • Craftsman 536881851 27 In. Walk Behind • Craftsman 247985360 24 In. Walk Behind • Craftsman 247887802 21 In. Walk Behind • Honda HS520 20 In. Walk Behind • MTD-Yard Machines 31A-2M1A752 21 In. Walk Behind • MTD-Yard Machines 31A240762 21 In. Walk Behind • MTD-Yard Machines 31A240752 21 In. Walk Behind • 2010 Toro Power Clear 180 18 In. Walk Behind.

STREET SWEEPERS: GMC T7500 S/A • 2009 Johnston 4000 • Sterling SC8000 COE S/A Vacuum.

RECREATIONAL VEHICLES: 6- Club Car Turf 2 Carryall Golf Cart • Club Cart Golf Cart • Georgie Boy Cruise Master Motor Home.

12- AIR COMPRESSORS: 2- Craftsman Electric • Dayton 3Z967A Electric Shop • Ingersoll-Rand Doosan • 3- Ingersoll-Rand • Sullivan-Palatek D185Q11JDSB Portable • Sullivan-Palatek D185Q11JD Portable • 2009 Sullivan-Palatek D185Q Portable.

CONSUMER GENERATOR SETS: MTB Generator M9500 • TB Generator.

LIGHT GENERATOR SETS: Kohler 45RZ72 40 KW Skid Mounted • Magnum MMG55 41 KW Portable • Terex T90P 72 KW Portable.

12- LIGHT TOWERS: Portable • Magnum 4060MH • Magnum MLT3060LHM Portable • 2- Magnum MLT3060KMH Portable • 2- Terex-Almida AL4060D4MH Portable • 4- Terex-Amida AL4060D4MH Portable • 2012 Wacker Neusen LTN6L Portable.

ITEMS INCLUDE: Arrow Boards • Welders • Pumps • Tanks • Concrete Equipment • Survey Equipment • Containers • Equipment Attachments • Demolition & Recycling Attachments • Tractor Attachments • Truck Attachments • Industrial Items • Equipment Parts • Shop & Warehouse Items • Parts & Stationary Items - Construction & Transportation.

Upcoming auctions around the world

USA

Williston, ND	Dec 8
Wolf Point, MT	Dec 10
Columbus, OH	Dec 11
Fort Worth, TX	Dec 11-12
Chehalis, WA	Dec 13
Nashville, TN	Dec 14
Los Angeles, CA	Dec 14-15
North Franklin, CT	Dec 17
Huron, SD	Dec 18
Chicago, IL	Dec 18
North East, MD	Dec 19

Canada

Edmonton, AB	Dec 11-12
Montreal, QC	Dec 17-18
Chilliwack, BC	Dec 19

International

Polotitlan, MEX	Dec 7
St Aubin Sur Gaillon, FRA	Dec 11-12
Dubai, UAE	Dec 11-12

BID & BUY ON THE GO!

Download the Ritchie Bros. app today.

rbauction.com/app





2009 Komatsu WA320-6



2012 John Deere 135D



2 – 2012 Volvo VNL670



3 – 2015 Bobcat S570



2014 & 2013 Caterpillar 430FIT 4x4



2012 International 4300SBA DuraStar
w/Terex-Telelect Hi-Ranger HR50



2016 Chevrolet 1500 Z71 4x4

See complete auction and equipment information on our website

rbauction.com

Equipment videos, photos, auction news and more.
Like us on facebook.com/RitchieBros



Scan using your device's camera or a QR code reader.

North Franklin, CT | December 17, 2018 (Monday)

rbauction.com

rb RITCHIE BROS.
Auctioneers®

60
YEARS