



2014 John Deere 670G LC VG



2013 Kenworth C500 Rod Rig, 1 of 2 – Support Trailer & 1 of 2 – 72 Bbl Rig Tank



2013 Kenworth C500



2014 Kenworth C500 w/Weldco WHL45TC100



3 of 5 – 2014 Caterpillar D6T LGP



2 – 2010 Caterpillar 773F

rb RITCHIE BROS.
Auctioneers®

60
YEARS

Edmonton, AB

December 11–13, 2018 (Tue–Fri)

Unreserved public auction

ACCEPTING CONSIGNMENTS, CONTACT US NOW

rbauction.com/Edmonton

Edmonton, AB

December 11–13, 2018

Tue–Fri 8:00 am

Phone: **780.955.2486**

Fax: 780.955.2662

Auction location: 1500 Sparrow Dr, Nisku, AB T9E 8H6

3,200+ items & counting

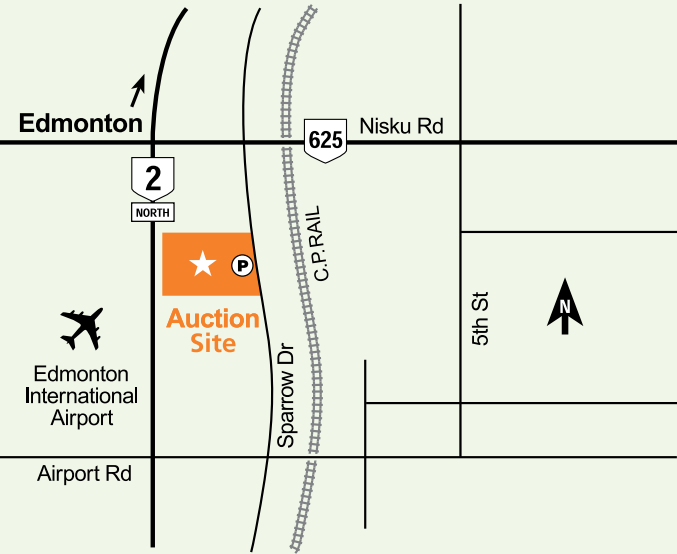
Bid in person or online

On-site registration starts: **Dec 8 (Sat)**

Inspection hours: **Mon–Fri, 8 am–4 pm**
Dec 8–9 (Sat–Sun) & Dec 15 (Sat) for load out 8 am–4 pm

Items must be removed by: **Jan 4 (Fri)**

Auction company license #303043



Car rentals

Take advantage of exclusive rental car discounts.

AVIS code: C039702 | **Budget code:** A062002

Auction highlights

A complete dispersal for:

Empire Vac Inc.

A&S Transport

A major realignment for:

Associated Aggregates Inc.

DGS Construction Ltd.

Kentek Forest Services Ltd.

Stene Bros. Oilfield Hauling Inc.

Total Oilfield Rentals Ltd.

Tundra Transport Inc.

Equipment from:

Abacus Enterprises Inc.

City of Edmonton

Midwest Pipelines Inc.

Pidherney's Inc.

Precision Contractors Ltd.

Richardson Bros. Olds Ltd.

and other owners.



Visit rbauction.com for complete auction information



Full equipment listings, more photos and detailed equipment information



New additions to each auction – items added daily!



Deposit and payment information, including financing, wire transfer accounts and taxes



Full auction schedule, with times and lot numbers



Maps, hotels and other local services

Auction notes

- ▶ Every item is sold 'as is, where is'
- ▶ International and online bidders – you may need to place a refundable deposit before you bid – check the auction details on our website for more information
- ▶ Transaction fee: (a) 10% on all lots selling for \$5,000 or less, (b) 3.85% on all lots selling for over \$5,000 up to \$33,500, with a minimum fee of \$500 per lot or, (c) \$1,290 on all lots selling over \$33,500.

Directions to auction site

From Edmonton city limits, approx 20 km South.

From Edmonton Int'l Airport, approx 2 km East to Sparrow Drive, then 1 km North to auction site.

Parking attendants and shuttle buses will be provided for your convenience. For viewing purposes, on-site shuttle service will be provided on Dec 7–12, 8 am–4 pm. Designated non parking areas within the Nisku Park will carry fines.

Late additions just signed!

Quantity of late-model Kenworth T800 Foremost & Western Star 4900 Hydro Vac Trucks

For details, visit rbauction.com/Edmonton



Caterpillar D7R



2 – 2014 Caterpillar D7E LGP



1 of 4 – 2012 Caterpillar D6T LGP



2012 Caterpillar D6N LGP



1 of 3 – Caterpillar D6R XW Series III



1 of 5 – Caterpillar D6N LGP



2014 Caterpillar IT14G Series II



Caterpillar 16G



1 of 3 – Caterpillar 14H



Volvo L220E



2 – Caterpillar 621G



2012 John Deere 770G



2011 John Deere 770G



2015 Bobcat S630



Caterpillar 330DL



2012 Case CX350C



2013 Caterpillar 390DL



1 of 2 – 2013 Caterpillar 320DL



1 of 2 – 2012 Caterpillar 320DL



Caterpillar 365CL



2014 John Deere 870G LC VG



2013 Doosan DX420LC-3



1 of 2 – 2014 Hitachi ZX290LC-5N



2012 Hitachi ZX290LC-5



2011 John Deere 450D LC



2015 Link-Belt 350X4



Liebherr R944CEW



2017 John Deere 210G LC



3 – 2017 John Deere 350G LC



2013 Caterpillar 740BEJ Ejector 6x6



2013 Doosan DA30 6x6



2010 John Deere 300D Series II & 2009 John Deere 300D



1 of 3 – Volvo A30D 6x6



2009 Caterpillar 775F



Caterpillar 815F



2012 Hamm 3410P



2014 John Deere 2154D



2014 & 1 of 2 – John Deere 748H & 1 of 2 – John Deere 748G Series III



2010 John Deere 953K



1 of 2 – Kenworth T800B Winch



1 of 4 – 2012 Kenworth T800 Winch



2009 Kenworth T800 Texas Bed Winch



2013 Kenworth C500 Winch



2012 Kenworth T800 Winch



2 – 2013 Peterbilt 367 Winch



Kenworth C500B Bed



2013 Kenworth C500



1 of 3 – Kenworth C500 Bed



2 – 2015 Kenworth T800 Heavy Haul, 2016 & 2015 Peerless 48 Ft



2016 & 2 – 2015 Peterbilt 367 Heavy Haul, 2017 & 2 – 2015 Arnes 31 Ft



2012 Kenworth T800 Heavy Haul



2014 Kenworth T800 Heavy Haul



1 of 2 – Kenworth T800



2018 Peterbilt 389



2014 Peterbilt 389



1 of 4 – 2012 Peterbilt 388



1 of 2 – 2012 Peterbilt 367



2012 International 7600 WorkStar



1 of 4 – Kenworth T800B



1 of 2 – 2009 Peterbilt 367 & JP 15 Ft



2013 Peterbilt 367



2 of 3 – GMC C5500 4x4 5000 PSI Pressure



International 5600I 19080 Litre Water



2012 Kenworth T800 16560 Litre



Kenworth T800B w/Hiab 422E8XS



2012 Kenworth T800 w/Maniex 4596T



1 of 5 – Kenworth C500 w/Maniex 4596



2013 Western Star 4900SA 6x6 w/Maniex 35124C



2014 Western Star 4800TS w/Maniex 50155SHL



2013 Freightliner FL120SD Coronado Combo



2014 Western Star 4900SA 21053 Litre



**2013 Western Star 4900SA 12604 Litre Combo,
2012 Freightliner Coronado SD122 12597 Litre Hydro
& 2012 Freightliner Coronado SD122 13033 Litre**



1 of 2 – 2015 Ford F550 4x4



2017 & 2016 Kenworth T370 Pressure Washer



2016 International Navistar 4x4



2012 Doepker 50 Ton



Scona TLBSS



ETM 20 Ton Self-Steering



2 of 4 - 2012 Mac TN1500APB 1480 Cu Ft



2 of 6 - 2015 Raglan 1400 Cu Ft



2012 Gerrys KOF302 53 Ft 24 Wheel
& 2012 Gerrys KPJ602 16 Wheel



2016 Peak 50 Ft x 9 Ft 6 In.



Beall 37 Cu Yd Heated Aluminum Super B-Train



2011, 2 – 2009 & 1 of 3 – Castleton



4 – 2017 Lode King 45 Ft



1 of 2 – 2014 Benlee 31986 Litre Aluminum



2011 Advance 46000 Litre



Unused – 2013 IWS 60 x 14 Ft 6 Unit 10 Man



New Holland TJ430 HD & Grouser 14 Ft 6 Way



2011 John Deere 6140D



2013 Prinoth Panther T8



2014 Prinoth Panther T8



Massey Ferguson 8220 w/SMI 5450



2014 Polaris Sportsman WV850



Kenworth T800 Rod Rig & 1 of 2 – Support Trailer



Kato AA27969000 800 KW



Mobile Decontamination Station



4 – Unused – 200 PSI 12 In. Lay Flat Hose



Williams & Davis 777 100 HP Boiler & Williams & Davis 777 80 HP Boiler

Equipment listings

Construction

38- CRAWLER TRACTORS: Caterpillar D8R • 2- Caterpillar D7R XR Series II • Caterpillar D7R • Caterpillar D7H LGP • Caterpillar D7H • 2- 2014 Caterpillar D7E LGP • 5- 2014 Caterpillar D6T LGP • 2012 Caterpillar D6T XW • 4- 2012 & 2011 Caterpillar D6T LGP • Caterpillar D6T LGP • Caterpillar D6R XW • Caterpillar D6R XW Series II • 2- Caterpillar D6R LGP Series III • 3- Caterpillar D6R XW Series III • 5- Caterpillar D6N LGP • 2- Caterpillar D6M LGP • Caterpillar D6D • Komatsu D85EX-15EO • Komatsu D65EX-15 • Komatsu D37P5.

20- WHEEL LOADERS: Case 721E • Case MW24C U.S. Army • Caterpillar 980G • 2014 Caterpillar IT14G Series II • JCB 426ZX • John Deere 744H • 2012 & 2009 John Deere 624K • John Deere 344J • 2- 2013 Komatsu WA500-7 • Komatsu WA450-6 • Komatsu WA250-5 • Komatsu WA201-1 • Volvo L220F • Volvo L220E • Volvo L180E • Volvo L150F • Volvo L150E • Volvo L60E.

CRAWLER LOADERS: Caterpillar 953.

17- SKID STEER LOADERS: 2012 Bobcat S750 • 2013 Bobcat S650 • 2010 Bobcat S650 • 2015 Bobcat S630 • 2013 Bobcat S530 • Bobcat S250 • 2013 Caterpillar 272D • Caterpillar 272C • Caterpillar 262C • Caterpillar 262B • 2014 Caterpillar 246D LRC • 2014 Caterpillar 236D LRC • Caterpillar 236B • 2014 JCB 190 T4 • JCB 175 T4 • JCB 155 T4 • Terex TSV70.

16- MULTI TERRAIN LOADERS: 2014 Bobcat T770 Compact Track • 2014 Bobcat T650 Compact Track • 2015 Bobcat MT55 Compact Track • Boxer 320 Compact Track • 2018 & 2017 Case TR320 2 Spd Compact Track • Caterpillar 297C • 2012 Caterpillar 289C2 Compact Track • 2016 Caterpillar 259D 2 Spd Compact Track • 2- 2014 JCB 190T T4 2 Spd Compact Track • Mobark 332D Boxer Compact Track • Mobark 320 Boxer Compact Track • Morbark Boxer 322D Compact Track • Takeuchi TL250 Compact Track • Takeuchi TL140 Compact Track

21- MOTOR GRADERS: Caterpillar 16G • 2012 Caterpillar 14M • Caterpillar 14M VHP Plus • 3- Caterpillar 14H • Caterpillar 140H VHP • Caterpillar 140G • Caterpillar 12G • 2- Champion 720A • 2- John Deere 872D AWD • 2010 John Deere 772G AWD • 2012 & 2011 John Deere 770G • John Deere 770BH • John Deere 770 • 2011 Volvo G976 AWD • 2- 2012 Volvo G960B.

MOTOR SCRAPERS: 3- Caterpillar 627F • 2- Caterpillar 621G.

46- HYDRAULIC EXCAVATORS: 2012 Case CX350C • 2013 Caterpillar 390DL • Caterpillar 365CL • 2011 Caterpillar 349EL • 2- 2009 Caterpillar 336DL • Caterpillar 330DL • Caterpillar 330BL • 2013 Caterpillar 320EL • 2- 2013, 2- 2012 & 2010 Caterpillar 320DL • Caterpillar 320DL • 2013 Doosan DX420LC-3 • 2011 Doosan DX300 • 3- 2012 Hitachi ZX470 • 2011 Hitachi ZX450LC-3 • Hitachi ZX330LC • 2- 2014 & 2012 Hitachi

ZX290LC-5N • Hitachi ZX270LC • 2011 Hitachi ZX200LC-3 • Hitachi ZX200LC-3 • Hitachi ZX200-3 • Hitachi EX200-5 • 2014 John Deere 870G LC VG • John Deere 800C • 2014 John Deere 670G LC VG • 2011 John Deere 450D LC • 3- 2017 John Deere 350G LC • John Deere 350D LC • 2013 & 2012 John Deere 290G LC • 2017 John Deere 210G LC • 2011 Kobelco SK210-8E • 2015 Link-Belt 350X4 • 2018 Sany SY235C • Volvo EC460CL • Volvo EC290BLC.

MATERIAL HANDLERS: 2012 Caterpillar M322DMH Mobile • Liebherr R944CEW.

MIDI EXCAVATORS: 2013 Caterpillar 305EGR.

MINI EXCAVATORS: Hitachi EX40UR • 2015 JCB 8029CTS • Kobelco SS1 • Kubota KX021 • Unused - 2018 Suihe LW6 • 2011 Wacker 50Z3.

19- ARTICULATED DUMP TRUCKS: 2014 & 2013 Caterpillar 740BEJ Ejector 6x6 • 2- 2012 Caterpillar 740B 6x6 • 3- Caterpillar 740 6x6 • 2- Caterpillar 730 6x6 • 2013 Doosan DA30 6x6 • 2012 John Deere 400D Series II 6x6 • 2013 & 2010 John Deere 300D Series II 6x6 • 2009 John Deere 300D 6x6 • 2011 Terex TA300 6x6 • 3- Volvo A30D 6x6 • Volvo A25D 6x6.

ROCK TRUCKS: 2009 Caterpillar 775F • 2- 2010 Caterpillar 773F.

DIRECTIONAL DRILLS: 2012 Ditch Witch JT4020 Mach 1.

LOADER BACKHOES: 2011 Caterpillar 430E • Caterpillar 430E • Caterpillar 420E • Caterpillar 416D 4x4.

DUMPERS: Morooka MSt700E Crawler • 2013 Prinoth Panther T8 Crawler.

ROUGH TERRAIN CRANES: Grove RT58D • Grove RT58C 4x4 • Grove RT58 4x4x4 • Grove RT48 4x4x4 • Tadano TR300XL-3 4x4x4.

COMPACTORS: Caterpillar 815F.

VIBRATORY PADFOOT COMPACTORS: Caterpillar CP563E • Dynapac CA362PD • 2012 Hamm 3410P.

VIBRATORY SMOOTH DRUM ROLLERS: Caterpillar CS563C

LOADERS: Lee-Boy 3000C Force Feed.

CONCRETE PAVERS: Gomaco GT6300 Curb Machine.

FELLER BUNCHERS: 2010 John Deere 953K • 2- John Deere 853J.

PROCESSORS: 2014 John Deere 2154D • 2- John Deere 2054 • Komatsu PC200LC-7.

LOG LOADERS: 2014 John Deere 2954D • Komatsu PC270LC-6.

SKIDDERS: 2014 John Deere 748H Grapple • 2- John Deere 748H Grapple • 2- John Deere 748G Series III Grapple • Timberjack 560 Grapple.

LOGGING EQUIPMENT: Esco Skidder Grapple • Rotobec 9008A-BL1-GU1-2 Grapple.

ENVIRONMENTAL EQUIPMENT: Fecon SLGP 250 Chipper • Fecon FTX90FM Mulcher.

JAW CRUSHERS: Hewitt-Robins Portable Jaw Crushing Plant.

SCREEN PLANTS: Clemro 42x17-90 42 In. x 17 Ft 1 Deck Skid Mtd Rip Rap Plant • 2010 Clemro 4 x 10 Ft 2 Deck Skid Mtd Incline.

FEEDERS: 12 Ft Portable Vibratory

CONVEYORS: Unused - 2018 Better BE3660C 36 In. x 60 Ft Portable Radial Stacking • 3- Unused - 2018 Better BE3660C 36 In. x 60 Ft Portable • 4- 2018 Hill Tops AE3660E 36 In. x 60 Ft Portable.

SCALES: Pacific FFRH8080 80000 Kg Platform • Precision Portable Truck • 2- Unused - 10000 Lb Crane.

Trucks & trailers

LOG TRUCKS: 2- Western Star 4900SA Tri Drive Self-Loading • 2013 Western Star 4900FA Tri Drive Self-Loading.

20- WINCH TRACTORS: 2- Kenworth T800B T/A Sleeper • 2- Kenworth T800B Tri Drive Sleeper • 2015 & 4- 2012 Kenworth T800 Tri Drive Sleeper • 2009 Kenworth T800 Tri Drive Sleeper Texas Bed • 2- Kenworth T800 Tri Drive Sleeper • 3- Kenworth T800 T/A Sleeper • 2013 Kenworth C500 Tri Drive Sleeper • Mack RD688S T/A • 2- 2013 Peterbilt 367 T/A • Western Star 4900SB T/A Sleeper.

12- BED & RIG-UP TRUCKS: Kenworth C500B T/A Bed • Kenworth C500B T/A Bed • Kenworth C500B T/A Bed • Kenworth C500B T/A Bed • 2013 Kenworth C500 T/A Bed • 2013 Kenworth C500 T/A T/A Bed • 2- 2011 Kenworth C500 T/A Bed • 3- Kenworth C500 T/A Bed.

18- HEAVY HAUL TRUCKS: 2015 Freightliner Coronado SD122 Tri Drive • 2018 Kenworth W900 T/A Sleeper • Kenworth T800B Tri Drive Sleeper • 2- 2015 Kenworth T800 Tri Drive Sleeper • 2014 Kenworth T800 T/A Day Cab • 2012 Kenworth T800 Tri Drive Sleeper • 2016 Mack GU814 Granite Tri Drive Day Cab • 2014 Mack CHU614 Tri Drive • 2014 Mack CHU614 Tri Drive Sleeper • 2016 & 2- 2015 Peterbilt 367 Tri Drive Sleeper • 2012 Peterbilt 367 T/A Sleeper • 2016 Western Star 4900SA Tri Drive Sleeper • Western Star 4900SA Tri Drive Sleeper • 2- Western Star 4900FA T/A.

87- TRUCK TRACTORS: 2012 Freightliner Cascadia 125 Sleeper T/A • Freightliner FLD120 T/A • Freightliner FLD120 Day Cab T/A • Freightliner67Columbia 120 Sleeper T/A • 2009 Freightliner Columbia 120 Day Cab T/A • 2- Freightliner Classic 120 Day Cab T/A • Freightliner Columbia 112 Day Cab T/A • Freightliner FL80 T/A • Freightliner Columbia Sleeper T/A • 2011 & 2- 2009 International 9900I Sleeper T/A • 2- International 9900I Sleeper T/A • 2015 International 9900 Sleeper T/A • International 8600 Transtar T/A • 5- 2011 International ProStar Plus Sleeper T/A • 2012 International ProStar Plus T/A • 2011 International LoneStar Sleeper T/A • 2012 Kenworth W900 Sleeper T/A • Kenworth T800B Sleeper • Kenworth T800B Tri Drive Sleeper

Truck Tractor • 4- Kenworth T800B Sleeper T/A • 2013 Kenworth T800 Day Cab T/A • 4- 2013 Kenworth T800 Sleeper T/A • 2012 Kenworth T800 Day Cab T/A • 2009 Kenworth T800 Sleeper T/A • 2- 2009 Kenworth T800 Day Cab T/A • 2- 2009 Kenworth T800 Tri Drive Sleeper • Kenworth T800 Day Cab T/A • Kenworth T800 Sleeper • 2- Kenworth T800 Sleeper T/A • 2011 Kenworth T700 Sleeper T/A • 2016 Kenworth T680 Sleeper T/A • Kenworth T300 Day Cab S/A • 2- 2013, 2012 & 2011 Mack CXU613 Sleeper T/A • Mack CX613 Vision Sleeper T/A • 2- 2013 Mack CHU613 Sleeper T/A • Mack CH613 T/A • Mack CH613 Day Cab T/A • 2014 Peterbilt 579 T/A • 2018, 2014 & 2013 Peterbilt 389 Sleeper T/A • 2012 Peterbilt 388 Day Cab T/A • 4- 2012 & 2010 Peterbilt 388 Sleeper T/A • Peterbilt 379 T/A Sleeper T/A • Peterbilt 378 T/A • Peterbilt 378 Tri Drive Sleeper • 2014 Peterbilt 375 Sleeper T/A • 2- 2012, 2011 & 2009 Peterbilt 367 Sleeper T/A • Peterbilt 367 Tri Drive Sleeper • 2016 Volvo VNL64T730 Sleeper T/A • Volvo VN Sleeper T/A • 2013 & 2011 Volvo VNL Sleeper T/A • Volvo VNL Sleeper T/A • 2010 Western Star 4900SA Sleeper T/A • Western Star 4900SA Day Cab T/A • Glidered - 2011 Western Star 4900FA Sleeper T/A • Western Star 4900FA Day Cab T/A • Western Star 4900 Sleeper T/A.

15- DUMP TRUCKS: Ford LT9513 T/A • Ford 9000 T/A • 2012 International 7600 WorkStar T/A • International 4900 S/A • 2012 Kenworth T800 Tri Drive • 2012 Mack GU713 T/A • Mack CH613 T/A • 2013 Peterbilt 367 Tri Drive Sleeper • 2- 2009 Peterbilt 367 Sleeper T/A • 2016 Peterbilt 348 T/A • 2- Peterbilt 340 T/A • Sterling LT9500 T/A • Sterling Acterra T/A.

15- PLOW TRUCKS & SANDERS: Freightliner FLD11264ST T/A • Freightliner FLD112SD T/A • 8- International 7500 WorkStar T/A • 3- International 5600I PayStar Tri Drive • Sterling LT9513 T/A • Sterling LT8513 T/A.

MIXER TRUCKS: 2009 Freightliner M2112 Tri Drive • Sterling L9500 T/A Semi • Sterling LT8500 T/A.

WATER TRUCKS: International F9370 100 Barrel T/A.

12- TANK TRUCKS: Freightliner M2112 100 Barrel T/A Potable Water • 3- GMC C5500 Crew Cab 4x4 5000 PSI Pressure • International 5600I 19080 Litre Tri Drive Water • 2012 Kenworth T800 16560 Litre T/A • Kenworth T800 16670 Litre T/A Potable Water • Kenworth T800 T/A Hot Oilier • Mack 15000 Litre Aluminum • Western Star 4964FA 11201 Litre T/A • Western Star 4964F T/A • 2012 Western Star 4900FA 16670 Litre T/A Potable Water.

25- BOOM TRUCKS: Ford F550 4x4 w/Fassi F45A.23 • Ford F550 4x4 w/Fassi F60A.23 • International 4700 S/A w/Hiab 090AW • 2009 International 4400 DuraStar S/A w/Fassi F170A.24 • Kenworth T800B T/A T/A w/National 1100 • Kenworth T800B T/A w/Hiab 422E8XS • Kenworth T800B T/A w/Palfinger PK32000E • Kenworth T800B Tri Drive w/Hiab 600E-6 • 2012 Kenworth T800 T/A Tri Drive w/Manitex 4596T • Kenworth C500B T/A • 2014 Kenworth C500 T/A Tri Drive w/

Weldco WHL45TC100 • 3- 2011 Kenworth C500 T/A Tri Drive w/Manitex 4596 • 2- Kenworth C500 T/A Tri Drive w/Manitex 4596 • 2- Oshkosh M977 COE 8x8 w/Grove • Peterbilt 340 S/A w/Palfinger PK17502 • Peterbilt 340 S/A w/Palfinger PK20002 • Peterbilt 335 T/A w/Heila HLL35000.35 • 2014 Ram 5500 4x4 • 2009 Sterling Acterra S/A w/Heila HL-L 13000-3S • 2013 Western Star 4900SA 6x6 w/Manitex 35124C • 2014 Western Star 4800TS T/A Tri Drive w/Manitex 50155SHL.

DIGGER DERRICK TRUCKS: Kenworth T800B Tri Drive.

19- VACUUM TRUCKS: 2015 Caterpillar CT660S Tri Drive Hydro Vac • Ford T/A • 2012 Freightliner Coronado SD122 12597 Litre Tri Drive Hydro Vac • 2012 Freightliner Coronado SD122 13033 Litre T/A Sleeper • 2011 Freightliner FL120SD Corona Tri Drive • 2013 Freightliner FLD120SD Coronado Tri Drive Sleeper Combo • Kenworth T800B Tri Drive Sleeper • Kenworth T800B Tri Drive Sleeper Combo • 2014 Kenworth T800 Tri Drive • 2012 Kenworth T800 16530 Litre Tri Drive • Kenworth T800 13639 Litre T/A • Kenworth T800 Tri Drive Combo • Peterbilt 378 11454 Litre Tri Drive Sleeper Hydro Vac • Peterbilt 330 S/A Combo • 2014 Western Star 4900SA 21053 Litre Tri Drive • 2013 Western Star 4900SA 12604 Litre Tri Drive Sleeper Combo • Western Star 4900SA 12520 Litre Tri Drive • Western Star 4900SA Tri Drive Hydro Vac • Western Star 4900SA Tri Drive.

DRILLS: Kenworth T800 T/A T/A Rod Rig Drill Truck • 2013 Kenworth C500 T/A Tri Drive Rod Rig Drill Truck.

FUEL & LUBE TRUCKS: 2012 Peterbilt 367 T/A.

10- SERVICE TRUCKS: 2011 Dodge 3500HD 4x4 • 2015 Ford F550 4x4 • 2- 2015 Ford F550 Crew Cab 4x4 • 4- 2012 Ford F550 4x4 • Ford F550 4x4 • 2012 Ford.

REEFER TRUCKS: 3- 2010 International 4400 S/A.

UTILITY TRUCKS: Ford E350 Steam • Ford F250 4x4 • Hino FB1817 COE Steam • 2011 International 4300 DuraStar S/A Steam • 2017 & 2016 Kenworth T370 S/A Pressure Washer.

ROLLBACK TRUCKS: International 4400 DuraStar Extended Cab S/A.

10- VAN TRUCKS: Ford E450 • 2010 Hino 358 S/A • 2012 Hino 338 S/A • International 4300M7 DuraStar S/A • 2011 International 4300LP S/A • 2016 International Navistar Extended Cab 4x4 • 2010 Mercedes-Benz Sprinter 3500 Cargo • 2011 & 2010 Mercedes-Benz 2500 Sprinter Cargo • 2013 Nissan NV 2500HD Cargo.

SANITATION TRUCKS: International 7500 WorkStar T/A Garbage • 2- Volvo WX64 T/A.

CAB & CHASSIS TRUCKS: Ford F650 Crew Cab S/A • 2015 Ford F550 Lariat Crew Cab 4x4 • 2012 Ford F550 4x4 • Ford F350 Crew Cab 4x4 • Kenworth T800B T/A Sleeper • Kenworth T800 T/A • Kenworth T800 Tri Drive Sleeper • Peterbilt 357 • 2011 Ram 5500 Crew Cab 4x4.

24- FLATBED TRUCKS: 2014 & 2- 2012 Dodge 5500HD 4x4 Sleeper • 2011 Dodge 5500HD SLT 4x4 • Dodge 5500 Crewcab 4x4 • 2013 Ford F550 • 2011 Ford F550 Extended Cab 4x4 • Ford F550 4x4 • 2014 Ford F450 Extended Cab 4x4 • Ford F450 4X4 • 2016, 2014, 2013, 2012 & 2- 2011 Ford F350 Crew Cab 4x4 • Ford F350 Crew Cab 4x4 • 2011 Ford F250 Extended Cab 4x4 • 2- 2013 GMC 3500HD Crew Cab 4x4 • Kenworth T800B T/A • Kenworth T800 T/A • Kenworth T300 S/A Tilt Deck • Sterling Acterra S/A Sleeper.

EMERGENCY VEHICLES: Ford F800 S/A Pumper Fire Truck • Pierce Fire Truck • Superior S/A Fire Truck.

TRUCKS: Kenworth T800 T/A T/A.

BUSES: Chevrolet C5500 17 Passenger S/A • Chevrolet 3500 Express Crew Carrier • 2011 Chevrolet 1500 Express 8 Passenger AWD Crew Carrier • Freightliner MB55 40 Passenger S/A.

33- LOWBOYS: Arrow Master Tridem Scissorneck • Aspen FG60-24 24 Wheel Scissorneck • 5- Aspen 40 Ton Tridem Scissorneck • Aspen FG40-3 Tridem Scissorneck • 3- Aspen FG40-3 40 Ton Tridem Scissorneck • Aspen Tridem Double Drop • Columbia OTAM-60G 60 Ton 16 Wheel Double Drop • Doepker SN80904 Tridem Scissorneck • 2013 & 2012 Doepker 50 Ton Tridem Scissorneck • Edmonton Trailer 60 Ton 16 Wheel Scissorneck • 2015 Fontaine LXT40C Renegade 40 Ton T/A Double Drop • Fontaine Tridem Double Drop • Fruehauf T/A • 2014 Gerrys 2+3+155 Ton Double Drop • 2013 Load King SDS533 50 Ton Tridem Scissorneck • Loadcraft T/A Double Drop • Nortrail BTA-12-50 1+2+3+150 Ton • Peerless LB5032BTMON3A 50 Ton Tridem Double Drop • Peerless 3+1 Double Drop • Rotec RORGNLB7516BT 75 Ton 16 Wheel • Scona 45 Ton Tridem Scissorneck • Scona 16LB 16 Wheel Scissorneck • Scona T06TLB Tridem Scissorneck • Scona TLBSS Tridem Scissorneck • Scona T/A Scissorneck • 2013 Trail-Eze TE801 Tridem Scissorneck Tilt.

17- STEP DECK TRAILERS: Alutrec 53 Ft Tridem • BWS 53 Ft Tridem • Lode King 53 Ft Tridem Steel • 2016 Lode King 53 Ft Tridem • 2013 Manac 14352A000 52 Ft Tridem • 2013, 2012 & 2011 Manac 14352A000 Tridem Trombone • 2015 Manac 13353C009 53 Ft Tridem Aluminum • 2014 Manac 13345A000 45 Ft Tridem • Manac 48 Ft Tridem • 2014 Oasis T/A • Rotec Trail Eze 46 Ft T/A Trombone • Trail Mobile TC18406 • UBILT 37 Ft T/A Trombone • 2015 Wilson Roadbrute 53 Ft Tridem • 48 Ft T/A.

17- JEEPS: Pin-On Axle • 2013 BWS 60JD3XHG Tridem • ETM 20 Ton T/A Self-Steering Booster • 2012 Gerrys KPJ602 16 Wheel Lo Pro • Gerrys JT40-2 T/A • 2014 Gerrys S/A Self-Steering Booster • Matrixx T/A • Nortrail T/A • Nortrail Self-Steering Booster • Nortrail S/A • Peerless JP45LR16 45 Ton 16 Wheel • Peerless JP-40-R-2A T/A • Peerless JP35SW2A T/A Log • Peerless T/A Log • Rotec ROJP16LP 16 Wheel • Scona LDD/CRC T/A • Trojan T/A.

10- SUPER B-TRAIN HIBOYS: Doepker HB8881L 28 Ft Pup • Doepker HB8881L 32 Ft Lead • 2- Doepker 32 Ft Lead • 2- Doep-

ker 28 Ft Pup • 2016 Lode King HGF30-2P Pup • 2016 Lode King HGF28-3L Lead • Manac 32 Ft Lead • Manac 28 Ft Pup.

20- HIBOYS: BWS 53HF3X 53 Ft Tridem • Canwest S/A • 2- 2016 Fontaine HBVSF22TAS 53 Ft Tridem • 4- Lode King 53 Ft Tridem • 3- 2009 Lode King 48 Ft T/A Combination • 7- 2009 Lode King 48 Ft T/A • 2013 Oasis T/A • Wilson 45 Ft T/A Combination.

13- PNEUMATIC BULK TRAILERS: 4- 2012 Mac TN1500APB 1480 Cu Ft Tridem • 2011 Mac TR1480APB Tridem • 6- 2015 Raglan 1400 Cu Ft Tridem • 2- 2012 Tremcar 1410 Cu Ft Tridem.

23- OILFIELD FLOATS: Arnes 40 Ton 45 Ft x 8 Ft 6 In. Tridem • Aspen 35 Ton 48 Ft x 8 Ft 6 In. Tridem • Aspen 35 Ton 43 Ft x 8 Ft 6 In. Tridem • Aspen 35 Ton 40 x 8 Ft Tridem Picker • 2- Aspen 30 Ton 40 x 8 Ft Tridem Picker • Denali 48 Ft x 8 Ft 6 In. Tridem • Doepker 48 Ft x 8 Ft 6 In. Tridem • 2009 Doepker 45 Ton 45 Ft x 8 Ft 6 In. Tridem • Doepker 45 x 9 Ft Tridem Picker • Gerrys 45 x 8 Ft Tridem Picker • Gerrys 30 Ton 45 x 8 Ft Tridem Picker • 2012 Gerrys KOF302 53 Ft x 10 Ft 6 In. 24 Wheel • Lornes 30 Ton 40 x 8 Ft Tridem Picker • Manac 48 x 9 Ft Tridem Picker • 2012 Manac 46 x 9 Ft Tridem Picker • 2012 Manac 40 Ft x 8 Ft 6 In. Tridem Picker • Neils 40 Ft x 8 Ft 6 In. T/A • Scona 51 Ft x 8 Ft 6 In. Tridem • Scona 50 Ft x 8 Ft 6 In. Tridem • Scona 45 Ft x 8 Ft 6 In. Tridem • Scona 40 Ft x 8 Ft 6 In. Tridem Picker • Scona 40 Ft x 8 Ft 6 In. T/A.

LOG TRAILERS & RIGGING: 2016 BWS 51LF4X3T 51 x 10 Ft Quad/A Hayrack • 2016 Peak 50 Ft x 9 Ft 6 In. Tridem Hayrack • 2- Peerless 48 Ft x 9 Ft 6 In. Tridem Hayrack • 2016 & 2015 Peerless 48 Ft x 9 Ft 6 In. Quad/A Hayrack.

BOTTOM DUMP TRAILERS: Beall 37 Cu Yd Heated Aluminum Super B-Train • Castleton 39 Ft Tridem • 2009 Castleton 38 Ft Tridem • Castleton 38 Ft Tridem • 2011 & 2009 Castleton 36 Ft Tridem • Castleton 36 Ft Tridem • 2016 Load Line 31 Ft Tridem Super B-Train Pup • 2016 Load Line 24 Ft Tridem Super B-Train Lead.

20- END DUMP TRAILERS: 2017 & 2- 2015 Arnes 31 Ft Tridem • Doepker SG104165 Tridem • Doepker 32 Ft Tridem • 2014 Doepker Impact 31 Ft Tridem • 2009 Gravel 28 Ft T/A • JP 26 Ft Quad/A Aluminum Gravel Wagon • JP 15 Ft Tridem Aluminum Pup • 2013 Midland SK3400 Tridem • Midland XL3000 31 Ft Tridem • Midland SL3000 Tridem • Midland MG35SL3000 32 Ft Tridem • 2013 Neustar Tridem • 2013 Renn SL1700 17 Ft Tridem Gravel Pup • Southland SL1400 14 Ft T/A Gravel Pup • 2013 Trojan 26 Ft Quad/A Aluminum Gravel Wagon • 2- Trojan 26 Ft Quad/A Aluminum Gravel Wagon • 2012 Trojan 24 Ft Quad/A Gravel Wagon.

SIDE DUMP TRAILERS: 2013 Doepker Tridem Lead • 2013 Doepker T/A • 2011 Midland TW2500 16 Ft T/A Lead • Sidump'r SDR223 36 Ft T/A.

CAR HAULER TRAILERS: 2019 Load Trail 22 Ft T/A • 2018 Load Trail 20 Ft T/A • 2015 Load Trail 16 Ft x 6 Ft 11 In. T/A • 2018 PJ Trailer 18 Ft T/A • PJ Trailers 18 Ft x 6 Ft 11 In. T/A • 2012 Rain-

bow Excursion 16 Ft x 6 Ft 10 In. T/A • Trail Tech T/A • Trailtech 22 Ft x 6 Ft 7 In. T/A Tilt • 20 Ft T/A.

REEFER TRAILERS: Great Dane 7841TZ1AP53 53 Ft x 8 Ft 6 In. T/A • Wabash 53 Ft Tridem.

STOCK TRAILERS: Merritt 54 Ft Tridem Cattle Liner.

14- GRAIN & SILAGE TRAILERS: 4- 2017 Lode King 45 Ft Tridem Grain • 2- 2019 & 2018 Lode King 30 Ft Super B-Train Pup Grain • 2019 Lode King 30 Ft Super B-Train Grain • 2019 Lode King 29 Ft Super B-Train Pup Grain • 3- 2019 & 2018 Lode King 28 Ft Super B-Train Lead Grain • 2019 Lode King 27 Ft Super B-Train Lead Grain.

19- VAN TRAILERS: 2009 Charmac 17 Ft T/A Enclosed • Featherlite 5530 23 x 8 Ft T/A Gooseneck Enclosed • 2013 Forest River 24 x 8 Ft T/A Enclosed • Fruehauf FB8F24296 42 Ft T/A Tool Crib • Interstate 20 Ft T/A Enclosed • Manac 53 Ft x 8 Ft 6 In. T/A Heated • Manac 53 Ft Tridem • Manac 53 Ft T/A Heated • Manac 45 Ft T/A Aluminum • Manac 30 Ft x 8 Ft 6 In. T/A Heated • Mond 53 Ft T/A Heated • Mustang Trailers 16 x 8 Ft T/A Gooseneck Enclosed • 2- 2013 Royal Cargo 18 x 8 Ft T/A Enclosed • 2015 Stoughton 53 Ft x 8 Ft 6 In. T/A Heated • Trailmobile T/A • Utility 53 Ft T/A • 53 Ft T/A Heated • T/A Enclosed.

VACUUM TRAILERS: 2- 2014 Benlee 31986 Litre Tridem Aluminium • 2013 Centerline 130 Barrel Tridem • Engle Tridem • Park • Rebel • Scona • Steel Head.

26- TANK TRAILERS: Advance 61500 Litre Super B-Train Lead • 2011 Advance 46000 Litre Tridem • Advance 30000 Litre Quad/A Water • 2- Advance Tridem Pup • Advance Super B-Train Pup • 2011 Helix 37854 Litre Tridem • Hutchinson 52000 Litre B-Train Lead • 2012 Hutchinson 38000 Litre Tridem • 2013 Hutchinson 38000 Liter Tridem • Hutchinson T/A • Hutchinson B-Train Pup • 7- Lazer Inox 42000 Litre Tridem • 2016 Meridian Fuel & Lube • 2012 Polar Tridem • 2013 & 2012 Polar Potable Tridem • 2013 Tremcar 38490 Litre Tridem • Westank 8000 Gallon Super B-Train Lead • Westank Super B-Train Pup.

24- EQUIPMENT TRAILERS: 2013 ABU 36 Ft x 8 Ft 6 In. T/A Gooseneck • 2014 ABU 25 Ft x 8 Ft 6 In. Tridem • Custombuilt 14 Ft x 6 Ft 6 In. S/A Utility • 2- Falcen FH270 24 Ft x 8 Ft 6 In. T/A Gooseneck • 2014 Forest River CA610EU • 2009 Hayshed 10 Ft x 5 Ft 6 In. S/A • Load Max 25 Ft T/A • 2012 Load Trail 24 Ft x 8 Ft 6 In. T/A Gooseneck • Mirage MGN824TRA4 Enclosed 24 Ft Tridem Gooseneck • 2014 Mustang 48 Ft x 8 Ft 6 In. T/A Dually Gooseneck • 3- Mustang Trailers MR270X24 24 x 8 Ft T/A Gooseneck • Norberts Gooseneck • PJ Trailers 30 Ft x 8 Ft 6 In. Tridem Gooseneck • 2012 PJ Trailers 14 x 7 Ft T/A Gooseneck • 2011 Rio 10 Ft x 5 Ft 4 In. T/A • 2014 SWS 40 Ft x 8 Ft 6 In. Tridem Gooseneck • The Trailer Factory 24 Ft x 8 Ft 5 In. T/A Gooseneck • Trail King 29 Ft x 8 Ft 6 In. T/A Tilt • 2010 Trailtech L270 20 Ft T/A • Trailtech 30 Ft Tridem • 26 Ft Gooseneck.

REEL TRAILERS: S/A.

CONTAINER CHASSIS: 2013 Contral 45 Ft x 8 Ft 8 In. T/A • 2- 2012 & 2010 Vanguard 48 x 8 Ft Tridem.

TRAILERS: Altorfer Inc 15 Ft x 5 Ft T/A Generator • Double A 14 Ft T/A Dump • Milron 36 Ft T/A Pole • Parktrailer 3500LB S/A Gen/Pump/Welder • Precision Trailers PCM12000 12 M3 Tridem Mixer • 2014 Roadclipper T/A • Tri-State 5 x 3 Ft S/A Gen Set Chassis • Triton 6 Ft 6 In. x 3 Ft S/A Gen Set Chassis • Wells Cargo 20 Ft T/A 20 Ft T/A Enclosed Sprayer.

36- MOBILE STRUCTURES: Alta-Fab 60 x 12 Ft Geo Wellsite • 2009 Alta-Fab 60 x 12 Ft Eng/Eng Wellsite • Alta-Fab 60 x 12 Ft Eng/Eng Wellsite • 2- Alta-Fab 56 x 12 Ft Eng/Geo Wellsite • Alta-Fab 56 x 12 Ft Double-Ended Wellsite • Alta-Fab 56 x 12 Ft Wellsite • Atco 60 x 12 Ft Office Trailer • Britco 40 x 12 Ft Office Trailer • Gemco 24 Ft T/A Wellsite • Unused - 2013 IWS 60 x 14 Ft 6 Unit 10 Man Camp • Northern 14 Ft 9 In. x 10 Ft Office Trailer • Northgate 60 x 12 Ft Office/Lunch/Office Trailer • 4- Northgate 60 x 12 Ft Office Trailer • QA Structures 58 x 11 Ft 8 Man Sleeper • QA Structures 12 x 56 Ft Eng/Eng Office Trailer • Rapid Camp 40 x 12 Ft Wellsite • 2- 2012 & 2011 Royal Washcar • Shield Structures 60 x 12 Ft Kitchen/Diner • Stratis 8 x 40 Ft 5000 Gal Fire Water Tank 40 Ft x 8 • Stratis 8 x 40 Ft 5000 Gal Potable Water Tank 40 Ft • 2- Stratis 8 x 40 Ft 5000 Gal Potable Water Tank • 2- Travco 60 x 12 Ft Office Trailer • Wells Cargo WC16 Washcar • Westlake 28 x 10 Ft Tridem Wellsite • 1000 Gal Insulated Water Tank 12 Ft • 1000 Gal Insulated Wastewater Tank • 48 x 12 Ft Field Office • 2010 Office Trailer.

Other items of interest

18- TELESCOPIC FORKLIFTS: 2010 Caterpillar TL1255 • Gehl RS844 4x4x4 • Gehl DL10L55 4x4x4 • Gehl RS5 • Genie GTH844 4x4x4 • 2012 JCB 550170 • 2013 & 2- 2012 JCB 550-170 4x4x4 • JCB 550-170 • JCB 550-170 4x4x4 • 2013 JLG G1255A 4x4x4 • 2012 JLG G1055A 4x4x4 • 2- 2013 JLG G943A 4x4x4 • Manitou MT1740SLT 4x4x4 • Skyjack VR1056D • Skytrak MMV 4x4x4.

ROUGH TERRAIN FORKLIFTS: Case 588H • Doosan D130S5 4x4 • 2013 Sellick S100J4-T4 4x4 • Sellick S80 4x4.

11- FORKLIFTS: 2012 Caterpillar 2P6000 • Clark C500-120 • Clark C40D • Clark C35L • Clark CGP25 • Toyota 426FGCU20 • Toyota FGL18 • Toyota 8FGCU25 • Toyota 3FD80 • Yale GLP060TGNAE08 • Yale GLP050VXEUSE084.

ELECTRIC FORKLIFTS: Caterpillar WP4500L 4500 Lb Pallet Jack.

24- SCISSORLIFTS: 2012 Genie GS2646 • 3- 2012 Genie GS2646 Electric • 3- 2012 JLG 2030ES Electric • 7- 2012 JLG 1930ES Electric • MEC 6092RT • 2012 MEC 3772RT • Skyjack SJ8841 • 2012 SKYJACK SJ7135 4x4 • Skyjack SJ7135 4x4 • 3- 2012 Skyjack SJ7127RT 4x4 • Skyjack SJ6832RT 4x4 • 2015 Skyjack 3219.

28- BOOM LIFTS: 2010 Genie Z135/70 4x4x4 Articulated • Genie S125 • Genie S125 4x4x4 • 2011 Genie S85 • 2011 Genie S85 4x4 • 2012 Genie Z80/60 4x4 Articulated • Genie Z80/60 4x4x4 Articulated • Genie Z80/60 Articulated • Genie S65 • 2- 2013 Genie TZ50 Electric Tow Behind • 2012 & 2011 Genie Z45/25J 4x4 Articulated • Genie Z45/25J 4x4 Articulated • Genie Z45/25 4x4 Articulated • 2011 Genie Z30/20N Articulated • 2013 Genie AWP30SDC • 2013 Genie GR20 • 2- 2011 JLG 1250AJP 4x4x4 Articulated • JLG 1250AJP Articulated • 2012 JLG 600AJ Articulated • 2013 JLG T500J Tow Behind • 2012 JLG 450AJ 4x4 Articulated • JLG 80HX • JLG 41AM • Skyjack SJ45T.

4WD AGRICULTURAL TRACTORS: John Deere 8560 • 2- Kubota GL600 • New Holland TJ430 HD.

MFWD AGRICULTURAL TRACTORS: AGCO 8610A • Case IH MXM130 Maxxum • 3- John Deere 7520 • 2011 John Deere 6140D.

2WD AGRICULTURAL TRACTORS: Toro 300.

22- UTILITY TRACTORS: Kubota B5000 4WD • Kubota B1702DT 4WD • Kubota B1502DT 4WD • Kubota B1200DT 4WD • Kubota B26 • 9- Kubota BX25D • 8- Kubota BX25.

BALERS: Highline Topgun S/A.

AIR DRILLS & SEEDERS: Bourgault 5710-50 54 Ft Air Drill.

CULTIVATORS: Agropow 7S AP1 7 Shank Subsoiler.

DISCS: Wishek 842N 16 Ft Offset.

HARROW BARS & PACKERS: Riteway RJH8055 Jumbo 8000 Series Harrows.

GRAIN HANDLING EQUIPMENT: Kongskilde Cushion Air 100 Grain Vac • 2014 Wheatheart R8-51 8 In. x 51 Ft Grain Auger.

ALL TERRAIN VEHICLES: Nodwell 110 Track Carrier Amphibian Unit • 2014 Prinoth Panther T8.

SNOW EQUIPMENT: Caterpillar 966C w/Idaho Norland CD48-44RR • Massey Ferguson 8220 w/SMI 5450

RECREATIONAL VEHICLES: Harley Davidson FLHTCU Ultra Classic Electra Glide Motorcycle • Victory Kingpin Motorcycle

ITEMS INCLUDE: 54- Pickups • Sports Utility Vehicles • Automobiles • Mowers • 37- Walk Behind Compactors • Landscape Equipment • Livestock Equipment • Sewer & Water • Utility Vehicles • Recreational Vehicles • Pleasure Craft • 53- Air Compressors • Industrial, Consumer & Light Generator Sets • 44- Light Towers • Sign Boards • 40- Welders • 53- Pumps • 86- Tanks • Concrete Equipment • Aggregate Equipment • Survey Equipment • Drill Parts & Accessories • Pipeline Equipment • Container Equipment • Industrial Plant Equipment • Engines • Crane Accessories • Equipment, Demolition & Recycling, Tractor & Truck Attachments • Industrial Items • Equipment Parts • Shop & Warehouse Items • Parts & Stationary Items- Construction & Transportation.



**IT'S THE
"SHOCK
& AWE"
SURPLUS
SALES EVENT
OF THE YEAR**

GovPlanet's OPERATION BLOWOUT

Las Vegas & Atlanta, Dec 7-8

- ✓ 10,000+ surplus government & military items available for sale
- ✓ 2 days of online bidding
- ✓ 2 days of live, in-person bidding
- ✓ 2 locations to bid in person – Las Vegas & Atlanta
- ✓ All live auction items will be sold with no reserve prices!

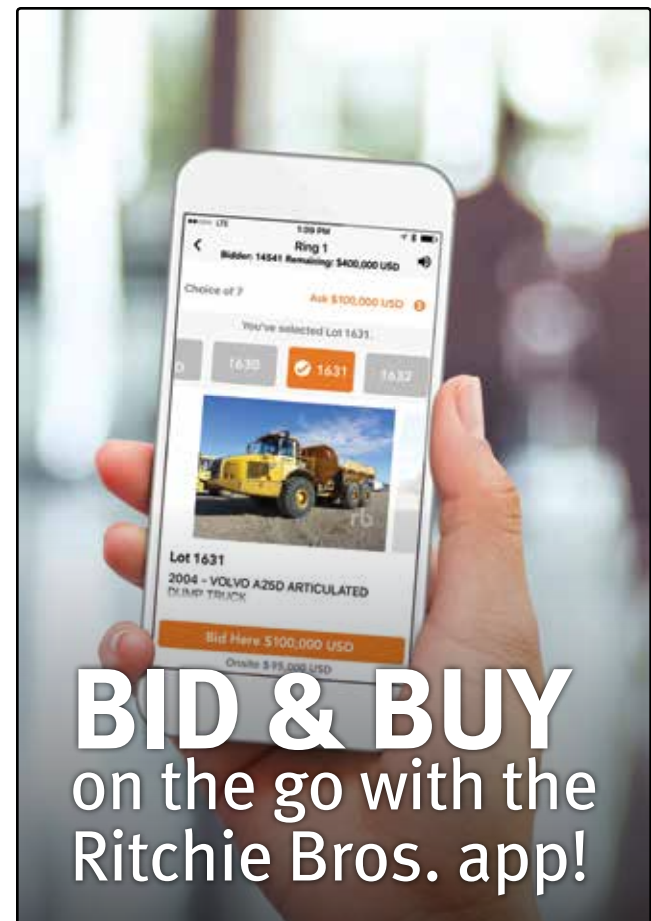
Bid on everything from military surplus construction equipment to surplus trailers, humvees, field gear and textiles, gen sets, industrial equipment and more. You have to see the selection to believe it!

Do your recon online and then register to bid:

GOV PLANET

An IronPlanet® solution

GovPlanet.com/blowout



BID & BUY
on the go with the
Ritchie Bros. app!

Download the app today.

Auctions in the palm of your hand – search equipment, register, and bid from anywhere.

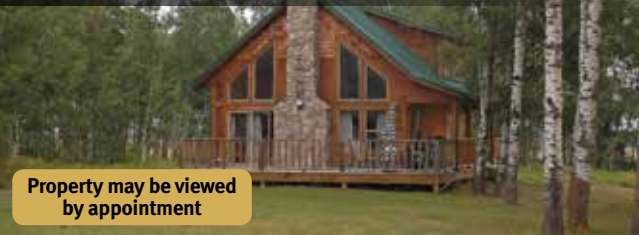


Fast. Easy. Convenient. rbauction.com/app

Real estate selling from this auction

Nicole Pearson

Country Residential Acreage – 3.03± Title Acres
1382± Sq Ft Residence – 960± Sq Ft Shop – Spruce View, AB



Property may be viewed by appointment

- ▶ 2006 1382± sq ft A frame home, 960± sq ft insulated and heated shop, 2018 assessment \$525,700
- ▶ Home includes: (3) bedrooms, (3) bathrooms, gas fireplace, 930± sq ft partially developed walk out basement



Kitchen

Owner – Nicole Pearson: 403.304.0517
Ritchie Bros. Real Estate – Jerry Hodge: 780.706.6652
Brokerage – Ritchie Bros. Real Estate Services Ltd.

Simone Reese

1 Parcel of Real Estate – 2400± Sq Ft Lakeview Home
Lake Okanagan Resort – Kelowna, BC



Property may be viewed by appointment

- ▶ 2400± sq ft home, nestled along the golf course with a beautiful view of Lake Okanagan. The home's unique design allows it to be a (3) bedroom, (3) bathroom home with a semi detached (1) bedroom, (1) bathroom guest house or used as (3) separate self-contained suites.

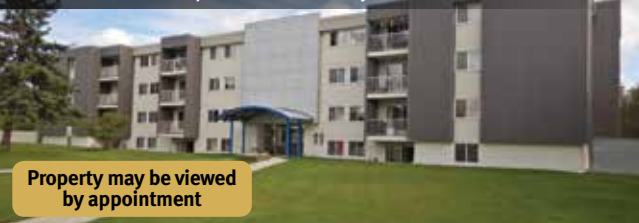


Suite 1 – kitchen

Owners Representative – Darren Baumgardner: 780.288.8650
Ritchie Bros. Real Estate – Jerry Hodge: 780.706.6652
Realtor® – Tom Moran PREC*: 250.784.7090
Brokerage: Re/Max Dawson Creek Realty

Norbert & Darlene Loiselle

2 (1 Bedroom, 1 Bathroom) Apartment Style Condos
Clearwater Courts Complex – Fort McMurray, AB



Property may be viewed by appointment

Parcel 1 – 101 13 Clearwater Crescent
Parcel 2 – 307 11 Clearwater Crescent

- ▶ Both condos are 700± sq ft, with 1 bedroom, 1 bathroom, fridge, stove, balcony, and on site property management is available



Owner – Norbert Loiselle: 306.479.8998
Ritchie Bros. Real Estate – Jerry Hodge: 780.706.6652
Brokerage – Ritchie Bros. Real Estate Services Ltd.

Raymond & Jody Marquette

2 Parcels of Farmland – 155.01 ± & 161± Title Acres
Westlock, AB



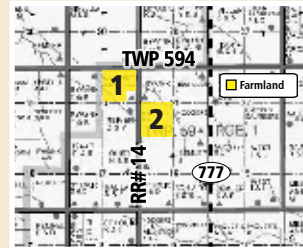
Property may be viewed without an appointment

Parcel 1 – NE 20-59-1 W5
155.01± Title Acres – Farmland

- ▶ 155± ac cult, canola 2018, taxes \$934.12

Parcel 2 – SW 21-59-1 W5
161 ± Title Acres – Farmland

- ▶ 140± ac cult, balance bush, canola 2018, taxes \$797.12



Owner – Raymond Marquette: 780.307.4097
Ritchie Bros. Real Estate – Jerry Hodge: 780.706.6652
Brokerage – Ritchie Bros. Real Estate Services Ltd.

Upcoming Spring On The Farm Real Estate Auctions

Manning, AB – April 4, 2019

Gordon & Linda Downey

8 Parcels of Farmland – 1061± Title Acres – 903± Cult Acres



Property may be viewed without an appointment

Owner – Gordon Downey: 780.836.5077 (c)
Ritchie Bros. – Doug Sinclair: 780.933.9156
Realtor®: Rick Wallan: 780.518.3313 (c)
Brokerage – All Peace Realty Ltd.

Beiseker, AB – April 4, 2019

Estate of Helen Bechthold

2 Parcels of Real Estate – 155± Title Acres Farmland
5± Title Acres Proposed Country Residential Acreage
Surface Lease Revenue \$3700



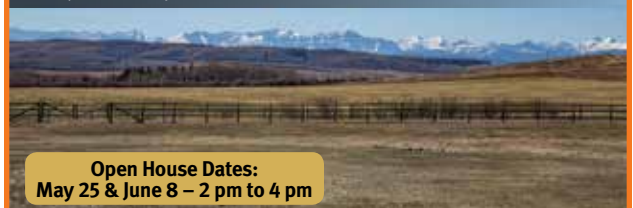
Open House Dates:
March 3 & 10 – 2 to 4 pm

Contact – Barry Grabo: 403.947.2134
Ritchie Bros. – Brad Goossen: 587.223.0053
Ritchie Bros. Real Estate – Jerry Hodge: 780.706.6652
Brokerage – Ritchie Bros. Real Estate Services Ltd.

Okotoks, AB – June 22, 2019

LC Ranching

1 Parcel of Farmland – 79.25± Title Acres
Hobby Ranch – Spectacular Mountain Views



Open House Dates:
May 25 & June 8 – 2 pm to 4 pm

Contact – Gary Lungal: 403.620.8875
Ritchie Bros. – Brad Goossen: 587.223.0053
Ritchie Bros. Real Estate – Jerry Hodge: 780.706.6652
Brokerage – Ritchie Bros. Real Estate Services Ltd.

It's back for a limited time only

**NO
PAYMENTS
FOR
120
DAYS***

For a limited time only, get the equipment and trucks you need with **PurchaseFlex™ Financing** and enjoy:

- ▶ No payments for the first 120 days*
- ▶ Fast application, approvals, & purchase flexibility
- ▶ Up to 100% financing with \$0 down
- ▶ Affordable, low monthly payments

Apply today.
call **1.855.331.7237** or visit rbauction.com/Flex

*OAC. Terms and conditions apply.

**Explore More
Equipment**

Check IronPlanet's weekly
online equipment auctions

ironplanet.com

**IRON
PLANET**

Upcoming auctions around the world

Canada

Toronto, ON	Dec 4–5
Saskatoon, SK	Dec 6–7
Truro, NS	Dec 7
Edmonton, AB	Dec 11–12
Montreal, QC	Dec 17–18
Chilliwack, BC	Dec 19

USA

Sacramento, CA	Dec 4
Denver, CO	Dec 5
Atlanta, GA	Dec 6
Las Vegas, NV	Dec 6
Williston, ND	Dec 8
Wolf Point, MT	Dec 10
Columbus, OH	Dec 11
Fort Worth, TX	Dec 11–12
Chehalis, WA	Dec 13
Nashville, TN	Dec 14
Los Angeles, CA	Dec 14–15

International

Caorso, ITA	Dec 4–5
Moerdijk, NLD	Dec 6–7
Polotitlan, MEX	Dec 7
St Aubin Sur Gaillon, FRA	Dec 11–12
Dubai, UAE	Dec 11–12



2014 Caterpillar 740BEJ Ejector 6x6



2 of 3 - Caterpillar 627F



2013 Komatsu WA500-7



1 of 2 - 2012 Volvo G960B



2015 Kenworth T800 Winch

See complete auction and equipment information on our website
rbauction.com



2016 Peterbilt 348



2014 John Deere 2954D



3 of 4 - 2019 Lode King Super B-Train

Equipment videos, photos, auction news and more.
Like us on facebook.com/RitchieBros



Scan using your device's camera or a QR code reader.

Edmonton, AB | December 11-13, 2018 (Tue-Fri)

rbauction.com

rb RITCHIE BROS.
Auctioneers®

60
YEARS