



John Deere 450D LC



Dean R Smith 120 x 48 x 7 Ft Spud Barge  
To be sold by photo



3 of 5 – Caterpillar 372G w/20 Ft Boom



3 of 5 – 2013 Freightliner PX125064ST

**rb RITCHIE BROS.**  
Auctioneers®

**60**  
YEARS

**Chicago, IL**  
June 15, 2018 (Friday)

Unreserved public auction



Link-Belt RTC80100 100 Ton 6x6x6

# Chicago, IL

June 15, 2018

Friday 8:00 am

Phone: **815.941.6400**

Fax: 815.942.8053

Auction location: 2400 Ritchie Road, Morris, IL 60450

## 1,500+ items & counting

Bid in person or online

On-site registration starts: Jun 12 (Tue)

Inspection hours: Mon–Fri, 8 am–5 pm

Items must be removed by: Jun 29 (Fri)

Auction Firm License # 444.000193, Auctioneer Greg M. Highsmith # 441.000865



### Car rentals

Take advantage of exclusive rental car discounts.

**AVIS code:** C039702 | **Budget code:** A062002

### Auction highlights

Trucks from the professionally-maintained fleet of:

**Walmart**

A complete dispersal for:

**A-OK Rentals**

and equipment from other owners.

Visit [rbauction.com](http://rbauction.com) for complete auction information



Full equipment listings, more photos and detailed equipment information



New additions to each auction – items added daily!



Deposit and payment information, including financing, wire transfer accounts and taxes



Full auction schedule, with times and lot numbers



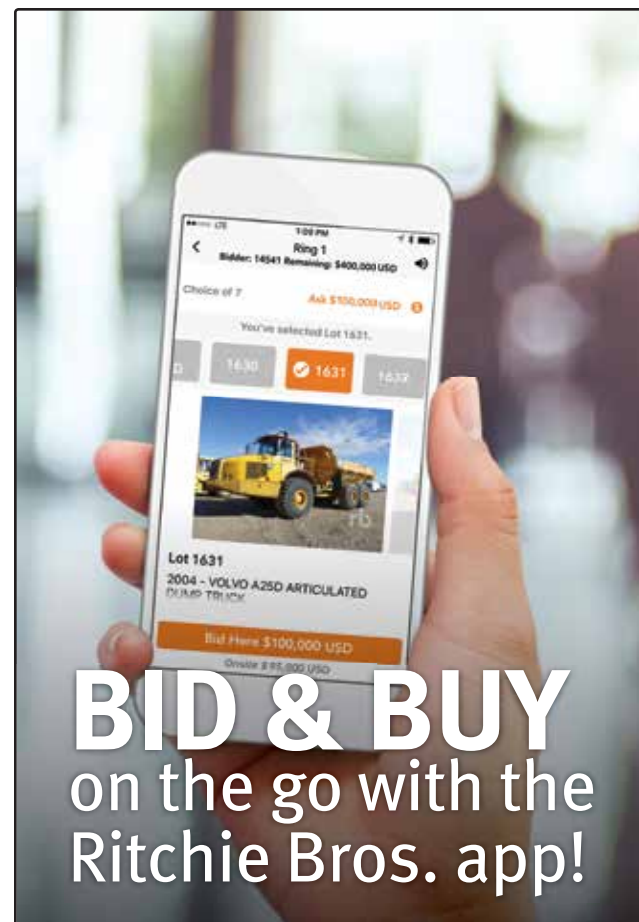
Maps, hotels and other local services

### Auction notes

- ▶ Every item is sold 'as is, where is'
- ▶ International and online bidders – you may need to place a refundable deposit before you bid – check the auction details on our website for more information
- ▶ Transaction fee: (a) 10% on all lots selling for \$5,000 or less, (b) 3.85% on all lots selling for over \$5,000 up to \$33,500, with a minimum fee of \$500 per lot or, (c) \$1,290 on all lots selling over \$33,500.

### Directions to auction site

From **Chicago O'Hare Airport**, take I-190E to I-294 South. Proceed 15 miles to I-55 South. Proceed 30 miles to I-80 West. Proceed 15 miles to RT 47 North. Within 100 yards, turn left on Gore Rd and proceed 1.5 miles to auction site. From Midway take Cicero Ave. North to I-55 South. Proceed 35 miles to I-80 West. Proceed 15 miles to RT 47 North. Within 100 yards, turn left on Gore Rd. and proceed 1.5 miles to auction site.



# BID & BUY

on the go with the  
Ritchie Bros. app!

**Download the app today.**

Auctions in the palm of your hand – search equipment, register, and bid from anywhere.



Fast. Easy. Convenient. [rbauction.com/app](http://rbauction.com/app)



Caterpillar D6N XL



John Deere 304J



Caterpillar D5M LGP



Ditch Witch SK650



2 of 9 – 2016 Caterpillar 232D



2 – Moxy MT36



1 of 2 – Caterpillar 140H VHP



2011 Link-Belt 160X2



John Deere 120



Volvo EC160C LC



JCB 8017



American 599C



2012 JCB 212S 4x4



Ingersoll-Rand DD110HF



John Deere 748G Series III 4x4



Cedarapids CR361



Volvo EC210B LC



2016 Freightliner CA125SLP Cascadia



2013 Caterpillar CT660S



1 of 3 – 2012 Freightliner PX125064ST



2 of 5 – International ProStar+122



Peterbilt 357



Freightliner FLD120



3 – International ProStar+113



Mack 600 MR600 w/Putzmeister VS32-4-12



International 9400i Eagle



Western Star 4900FA



Peterbilt 330 w/PM WB60 7700 Lb



Sterling L8500 w/FEC 3216 8 Ton



International 4200 w/Versalift



3 of 6 – 2011 Dodge 5500 SLT 4x4



Mitsubishi Fuso



2014 & 2012 Freightliner MM106042S



1 of 4 – 2012 International 4300



Peterbilt 359



2014 Ford F350 XL Super Duty



**Kovatch KFT12 4x4**



**2012, 2009 & 2008 Ford F250 4x4**



**7 of 20 – Trail King TK60MG 30 Ton**



**MAC 39 Ft Frameless**



**2012 Wabash 53 Ft Spread Axle w/Thermo King SB230**



**Benlee 45 Ft Rolloff**



**Genie GTH844 8000 Lb 4x4x4**



**2015 Merlo ROTO 40.30MCSS**



**Genie Z45/25J 4x4**

## Equipment listings

### Construction

**PIPELAYERS:** 5- Caterpillar 572G Crawler • Caterpillar 572E Crawler.

**CRAWLER TRACTORS:** Caterpillar D6N XL • Caterpillar D6N LGP • Caterpillar D5M LGP • Caterpillar D3C LGP Series III • Dresser TD25G • John Deere 750C LGP Series II • John Deere 350D Wide Track.

**19- WHEEL LOADERS:** Caterpillar 966C • Caterpillar 966B • Caterpillar 950F Series II • Caterpillar 950 • Caterpillar 930 • Caterpillar 906 • 2- Dresser 550 • 2- Fiatallis 345B • 2011 John Deere 644K • John Deere 624H • 2012 John Deere 544K • John Deere 444 • John Deere 304J • Trojan 1900 • Trojan 1500Z • Volvo L70 • Volvo L30.

**CRAWLER LOADERS:** Caterpillar 953 • Caterpillar 951B.

**44- SKID STEER LOADERS:** Bobcat 863F • 2015 Bobcat S630 • 3- 2016, 9- 2015 & 2- 2014 Bobcat S570 • 2016 Bobcat S510 • Bobcat S250 • Bobcat S175 • Bobcat S160 • 2012 Bobcat S70 • Caterpillar 272C High Flow • 5- 2015 Caterpillar 262D 2 Spd • 2009 Caterpillar 246C 2 Spd High Flow • 2- Caterpillar 246B 2 Spd • 9- 2016 & 2015 Caterpillar 232D • John Deere 240 • 2011 New Holland L225 2 Spd • New Holland L175 • New Holland L175 2 Spd.

**MULTI TERRAIN LOADERS:** 2012 Bobcat T650 Compact Track • Bobcat T550 Compact Track • Bobcat T190 High Flow Compact Track • 2014 Bobcat MT55 Walk Behind • Ditch Witch SK-650 Walk Behind Compact Track • 2- Kubota Compact Track • Takeuchi TL140 2 Spd Compact Track • Takeuchi TL130 Compact Track.

**MOTOR GRADERS:** 2- Caterpillar 140G VHP.

**10- HYDRAULIC EXCAVATORS:** Case CX160 • John Deere 490E • John Deere 450D LC • John Deere 120 • Kobelco SK330LC-6 • 2- Link-Belt 160X2 • Volvo EC210BLC • Volvo EC160CLC • Volvo ERC145DL.

**MATERIAL HANDLERS:** 2014 Sennebogen 825M Mobile.

**MINI EXCAVATORS:** Bobcat 329 • Caterpillar 305 • IHI 35NX • JCB 8017 • Kubota KX121 • Takeuchi TB235R • Takeuchi TB235 • Takeuchi TB145.

**ARTICULATED DUMP TRUCKS:** 2- Moxy MT36 • Terex TA35 6x6 • Terex TA30 6x6 • Volvo A40D.

**WATER WAGONS:** Caterpillar 613B.

**13- TRENCHERS:** Barreto Walk Behind Rubber-Tired Chain • Ditch Witch 1820 6 In. • 2- Ditch Witch RT115H • Ditch Witch HT25 • 5- Toro TRX20 • Vermeer V8550 4x4 Ride On Rubber-Tired Bucket • Vermeer V5750 4x4 Rubber-Tired • Vermeer RT200 6 In.

**DIRECTIONAL DRILLS:** Ditch Witch JT30 Crawler • Porta-Mole HD5H • 2- Vermeer D24X40A Navigator Crawler • Vermeer D24X40 Series II Crawler • Vermeer D10X15 Navigator Crawler.

**LOADER BACKHOES:** 2- Case 580K • 2012 JCB 2125 • 2011 John Deere 310J 4x4 • 2011 John Deere 310J • New Holland 555E 4x4.

**ROUGH TERRAIN CRANES:** Link-Belt RTC80100 100 Ton 6x6x6 • P & H CN128 28 Ton • Terex RT450.



2011 John Deere 644K



Dredging Supply Company 58 Ft 6 In. x 17 Ft x 4 Ft  
To be sold by photo



Lorian Callie M 16 Ft 9 In. x 64 Ft x 8 Ft  
To be sold by photo

**CRAWLER CRANES:** American 4260 • American 599C • Manitowoc 4100W Vicon Series I & II 230 Ton.

**COMPACTORS:** Caterpillar 815 Soil.

**VIBRATORY PADFOOT COMPACTORS:** Hypac C832B • Ingersoll-Rand SD40F.

**VIBRATORY SMOOTH DRUM ROLLERS:** Caterpillar CS-553 • Dresser D784 • 2012 Volvo SD100D.

**TANDEM ROLLERS:** Caterpillar CB224C • 2-2017 Hamm HD13 Vibratory • Hypac C350D Vibratory • Ingersoll-Rand DD110HF Vibratory.

**ROLLERS:** Case W602BD.

**WALK BEHIND COMPACTORS:** Stanley SFP18501H • 2- Stanley SRA681H Jumping Jack • Stone S-28A Plate • Wacker WP1550 Plate • Wacker BS50-4.5 Jumping Jack • Qty of Plate.

**ASPHALT PAVERS:** Blaw-Knox • Cedarapids CR361 Crawler • Roadtec RP150.

**ROAD WIDENERS:** Blaw-Knox RW100A • Midland SP.

**LOG LOADERS:** 2013 Hitachi ZX210F-3 Loader.

**SKIDDERS:** John Deere 748G Series III 4x4 Grapple.

**ENVIRONMENTAL EQUIPMENT:** Brush Bandit BB200XD 16 In. Portable Tow Behind Chipper • Toro STX26 Stump Grinder • Vermeer BC625A 6 In. Portable Tow Behind Chipper • 2012 Vermeer BC600XL Chipper • 2011 Vermeer BC600 Chipper.

**14- CONVEYORS:** Bano 4000x600VF Recycle • Unused - Better BE3660C 36 In. x 60 Ft Stationary Stacking Radial • 7- Unused - Better BE3660C 36 In. x 60 Ft Portable Stacking Radial • Prodeva CCN 20-13 Recycle • 4- Unused - XCG 36 In. x 60 Ft Portable Stacking Radial.

**CONTROL VANS:** Brae GSVW-Z-454TS-S T/A Gen Set Trailer.

### Trucks & trailers

**LOG TRUCKS:** Kenworth T800 T/A.

**BED & RIG-UP TRUCKS:** Ford F800.

**156- TRUCK TRACTORS:** 2013 Caterpillar Day Cab T/A • 2016 Freightliner PX125064ST Cascadia Sleeper T/A • 6- 2013 & 6- 2012 Freightliner PX125064ST Cascadia Sleeper T/A • 2- 2012 Freightliner PX125064ST Day Cab T/A • 2- 2012 Freightliner PX125042ST Day Cab S/A • Glidered - 2016 Freightliner CL120064ST Columbia Sleeper T/A • Freightliner CL120064ST Columbia Day Cab T/A • 6- Freightliner CL120064ST Columbia Sleeper T/A • 2014 Freightliner MM112064ST T/A • 2012 Freightliner MM112042ST Day Cab S/A • 5- 2011 Freightliner PX125064ST T/A • Freightliner FLC11264TST T/A • 2016 & 2014 Freightliner CA125SLP Cascadia Sleeper T/A • 2012 Freightliner CA125 T/A • 2017 Freightliner ST120 Sleeper T/A • 10- Freightliner ST120 Columbia Sleeper T/A • Freightliner C120 T/A • Freightliner M2 Business Class T/A • 2010 Freightliner Columbia T/A • 2010 Freightliner Cascadia Sleeper T/A • 2- International 9400i T/A T/A • 4- International 9200i Day Cab T/A • International 9100 Day Cab T/A • 9- 2013 International 8600 Day Cab T/A • International 8500 Day Cab S/A • 2012 International 4400 T/A • 7- 2014, 8- 2013, 3- 2012 & 2- 2011 International ProStar+122 Sleeper T/A • 5- 2013 & 5- 2012 International ProStar+122 Day Cab T/A • 3- 2013 International



ProStar+113 Day Cab T/A • 7- 2011 International ProStar Premium Day Cab T/A • 2009 International ProStar Premium Day Cab S/A • 2010 International ProStar Sleeper T/A • 3- Kenworth T800 Day Cab T/A • 10- Kenworth T800 Day Cab S/A • 2016 Mack CXU613 Day Cab T/A • 3- Mack CXN613 Day Cab T/A • Mack CH613 T/A • Peterbilt 387 Sleeper T/A • 2013 & 2010 Peterbilt 386 Sleeper T/A • 2- Peterbilt 378 T/A • Sterling LT7500 T/A • 2009 Sterling T/A • 2013 Volvo VNL64T630 T/A Sleeper T/A • 2012 Volvo VNL64 Day Cab T/A • 2009 Volvo VNL42T Day Cab S/A • 11- Volvo VNL42T Day Cab S/A • Volvo WVA T/A • Volvo VNM T/A • Western Star 4900FA Sleeper T/A • Western Star Day Cab Sleeper Tri/A.

**CAR HAULERS:** International.

**QUAD AXLE DUMP TRUCKS:** Peterbilt 357.

**16- DUMP TRUCKS:** Ford LT9513 T/A • Ford F800 T/A • Ford F750 XL S/A • Ford F550 S/A • Ford F450 4x4 S/A • Freightliner FLD120 Sleeper T/A • GMC C4500 S/A • International 7500 Tri/A • 2- International 4900 T/A • 2010 International 4300 S/A • International F2574 T/A • International F1954 T/A • Kenworth T600A T/A • Kenworth T600 T/A • Sterling LT9500 T/A.

**PLOW TRUCKS & SANDERS:** Chevrolet 3500HD Silverado • Sterling.

**MIXER TRUCKS:** GMC Autocar.

**CONCRETE PUMP TRUCKS:** Mack MR688S w/Putzmeister VS32-4-12.

**BOOM TRUCKS:** Ford LT8501 T/A • Peterbilt 330 • Sterling L8500 w/FEC 3216 8 Ton.

**10- BUCKET TRUCKS:** Ford F800 • Ford F650 • Ford F550 4x4 • Ford F550 w/Versalift • Ford F450 XL Super Duty w/Terex TL38P • Ford F350 XL Super Duty Extended Cab w/Versal • GMC C7500 w/Altec LRV55 • GMC C7500 w/Altec LRV60/E70 • 2009 International 4300 w/AA755L • International 4200 w/Versalift.

**MECHANICS TRUCKS:** 2012 Dodge 2500 Service • 2011 Ford F550 Service • 2011 Ford F550 4x4 • Ford F550 4x4 Service • 2- Ford F550 • Ford F350 4x4 • Freightliner MM154042S Crew Cab • GMC C3500 Service.

**REEFER TRUCKS:** 3- 2012 Freightliner M2 S/A • 2012 Hino 338.

**25- UTILITY TRUCKS:** 2- 2012 Dodge 5500HD SLT Crew Cab 4x4 • 11- 2011 Dodge 5500HD Crew Cab • 2012 Dodge Ram Crew Cab 4x4 • Ford F550 • Ford F450 • 2012 Ford F250 XL Super Duty Extended Cab • Ford F250 Super Duty • GMC 4500 • International 4700 S/A • Mitsubishi Fuso COE 4x4.

**ROLLBACK TRUCKS:** GMCT/A • International 6400.

**30- VAN TRUCKS:** Ford T350 Cutaway • Ford E250 • 7- 2012 Freightliner MM106042S • Freightliner FL60 • 2014 & 2012 Freightliner M2 Business Class • 2012 Hino 268 • International 4900 Crew Cab • International 4400 • 5- 2013 International 4300 • 2012 International 4300 S/A • 2- 2012 International 4300 • 2- 2012 International 4300 S/A • International 4300 • International 4200 • 2013 Isuzu NPR-HD COE • Isuzu FSR COE Crew Cab • 2013 Mitsubishi Fuso FE180 COE.

**TOW TRUCKS:** Peterbilt 359 T/A Sleeper.

**CAB & CHASSIS TRUCKS:** Chevrolet 3500HD • Ford F550 Super Duty • Ford F450 XL Super Duty • 5- 2013 International 4300M7.

**13- FLATBED TRUCKS:** Chevrolet C3500 Silverado Dump • 2012 Chevrolet 3500 • Chevrolet 2500HD Extended Cab • Ford LN8000 • Ford F550 XL Super Duty 4x4 • Ford F550 4x4 • Ford F550 • Ford F450 Super Duty • 2014 Ford F350 XL Super Duty • 2013 Ford F350 • 2012 Hino 268 S/A • International 4200 • Mack CH613 T/A.

**EMERGENCY VEHICLES:** Kovatch KFT-12 4x4 Fire Truck.

**TRUCKS:** Chevrolet C70 4x4 Platform • Chevrolet C70 Platform • 2011 Ford F750 Chip • 2009 GMC C7500 4x4 Chip • International Loadstar 1600 Platform • Sterling LT7501 Tire.

**SPORTS UTILITY VEHICLES:** Chevrolet Trailblazer • 2010 Ford Escape XLT • 2014 Jeep Grand Cherokee.

**24- PICKUPS:** Chevrolet 2500HD LT Extended Cab 4x4 • Ford F350 Crew Cab 4x4 • Ford F350 Crew Cab • Ford F350 Extended Cab 4x4 • 2012 & 2009 Ford F250 XL Crew Cab 4x4 • Ford F250 XL Crew Cab 4x4 • Ford F250 Extended Cab 4x4 • 2011 Ford F150 XLT Crew Cab 4x4 • 2013 Ford F150 XLT Extended Cab 4x4 • Ford F150 XLT Extended Cab 4x4 • 3- Ford F150 XL Extended Cab • 3- 2011 & 2009 Ford F150 XL • 2- 2011 Ford F150 Extended Cab • GMC 1500 Sierra Crew Cab 4x4 • GMC 1500 Sierra SLT Extended Cab 4x4 • GMC Sonoma.

**BUSES:** 2009 Blue 71 Passenger 39 Ft • Bluebird 78 Passenger 39 Ft.

**AUTOMOBILES:** 2- Chevrolet 2500 Express Van • 2014 Ford Fusion.

**49- LOWBOYS:** Dynaweld • Eager Beaver 50 Ton Tri/A • Eager Beaver 50GSL Tri/A • 13- 2013, 6- 2012 & 2009 Fontaine Renegade LX40 40 Ton T/A • Fontaine Renegade LX40 40 Ton T/A • Fontaine 4LF 35 Ton 48 Ft • Talbert TDW355A 35 Ton T/A • 2013 Trail King TK60MG T/A • 18- 2013 Trail King TK60MG 30 Ton T/A • 2013 Trail King TK60AMG 30 Ton T/A • XL Specialized XL110HDG Tri/A • XL Specialized 70MFG 35 Ton T/A • XL Specialized T/A.

**STEP DECK TRAILERS:** 2013 Doonan 532MMBCGCHEKZ 40 Ton 53 Ft T/A Spread Axle • 2013 Doonan 532MMBCGCHEKZ 40 Ton 53 Ft T/A Spread Axle • Great Dane 53 Ft • Manac 13248A00 35 Ton T/A • 2011 Transcraft DTL2100 40 Ton 53 Ft T/A Spread Axle • 2- 2011 Transcraft DTL2100 40 Ton 53 Ft Spread Axle.

**ASPHALT TRAILERS:** Flow Boy T/A.

**17- HIBOYS:** Dorsey • 2- Fontaine 48 Ft • Fontaine 45 Ft • Fontaine FTW4 48 Ft T/A Spread Axle • Nu Van Technology • 5- Transcraft 53 Ft Spread Axle • Transcraft 48 Ft Spread Axle • Transcraft 48 Ft • Transcraft 45 Ft Spread Axle • Wabash 48 Ft T/A • Wilson CF900 • Wilson CF900 48 Ft S/A.

**BOTTOM DUMP TRAILERS:** Matrix Tri/A • 8- 2018 Ranco LW2140 40 Ft 21 Yard T/A.

**11- END DUMP TRAILERS:** Bri-Mar 10 Ft T/A 10000 Lb • Clement 22 Ft T/A Frameless • 2016 Coras Predator • East 24 Ft T/A Aluminum • Heil • MAC 39 Ft Spread Axle Aluminum Frameless • 2018 Manac T/A • Montone 22 Ft T/A Aluminum • Ravens 1040A7272 T/A Aluminum • 2- Warren 22 Ft T/A Aluminum.

**CAR HAULER TRAILERS:** Cottrell • Roadmaster 40 Ft Enclosed Gooseneck.

**REEFER TRAILERS:** Utility VS2R 53 Ft T/A • Wabash 53 Ft T/A • 2012 Wabash 53 Ft Spread Axle.

The screenshot displays a grid of auction listings for various pieces of heavy machinery. Each listing includes an item number, a brief description, the location (state and zip code), the opening bid price, and the number of bids. For example, one listing is for a '2013 Cat 349EL Track Excavator' in Kansas (876880) with a highest bid of US \$152,000 and 54 bids. Another is for a '2013 Kenworth T660' in Kansas (876880) with a highest bid of US \$35,000 and 36 bids. The interface also shows bidding close times and options to view items later.

# Explore More Equipment

Check IronPlanet's weekly online equipment auctions

[ironplanet.com](http://ironplanet.com)



**67- VAN TRAILERS:** 2012 Great Dane 53 Ft T/A • Great Dane 53 Ft T/A • 3- Great Dane 53 Ft • Great Dane Alumvan 53 Ft T/A • 2- Great Dane 50 Ft T/A • Great Dane 48 Ft T/A • 3- Hyundai 53 Ft • Kentucky 48 Ft x 102 In. • Lufkin TFV-IPST 53 Ft T/A • 3- Lufkin 53 Ft T/A • Lufkin 53 Ft • Monon 53 Ft • 2- Stoughton 53 Ft • Strick 53 Ft T/A • 2- Trailmobile 53 Ft T/A • Trailmobile 53 Ft • Trailmobile • Utility 4000 DX 53 Ft T/A • Utility 53 Ft T/A • 5- Utility 53 Ft • 2016 Vanguard VXP 53 Ft T/A • 2012 Wabash 53 Ft T/A • 28- Wabash 53 Ft T/A • Wabash 53 Ft • Wabash • Wells Cargo 36 x 8 Ft T/A Gooseneck Enclosed • 2012 Wells Cargo.

**VACUUM TRAILERS:** Complete Vac • Ditch Witch FX30 500 Gallon T/A.

**TANK TRAILERS:** Fruehauf FW11.

**45- EQUIPMENT TRAILERS:** American Trailer T/A • AmerTrail PT24-24D2C2 24 Ft T/A • Belshe 07235 T/A • Belshe PK1 9 Ft 6 In. x 4 Ft 2 In. S/A • Big Tex 20PH 20 x 8 Ft T/A • Brooks Brothers SL162E 12000 Lb 16 Ft x 6 Ft 8 In. T/A • Carry On 6 Ft x 4 Ft 3 In. S/A • Crown 15 Ft x 6 Ft 2 In. T/A • Dynaweld T/A • Econoline • Homemade 10 Ft x 5 Ft 10 In. T/A • Hudson 7 Ft 6 In. x 24 Ft T/A Gooseneck • Interstate 16 Ft x 6 Ft 6 In. T/A • L & D 16 Ft x 6 Ft 5 In. T/A • L & D 14 Ft x 6 Ft 4 In. T/A • Liberty T/A Gooseneck • MT Millennium Trailers T/A • Park 18 Ft x 6 Ft 11 In. T/A • PJ 14 Ft x 6 Ft 6 In. S/A • 2016 PJ Trailers 21 x 8 Ft Tri/A • 2012 Rice 18 Ft x 6 Ft 10 In. T/A • Snake River 17 Ft T/A • 2015 Snake River 14 Ft x 6 Ft 4 In. T/A • Snake River 14 Ft x 6 Ft 4 In. T/A • Snowco 3000 Lb 8 Ft x 4 Ft In. S/A • 2013 & 5- 2012 Teske 22979 • TFI 24 x 8 Ft T/A Gooseneck • Tilt Top • 2013 Towmaster T40T • Towmaster T14T 21 Ft 4 In. x 6 Ft 10 In. T/A Tilt • Towmaster T14T T/A • Towmaster T10DD 16 Ft x 6 Ft 8 In. T/A • Towmaster S/A Utility • 3- Trail Boss • Unique 18 x 8 Ft T/A • VIP • Wells Cargo • 9 Ft 6 In. x 4 Ft 2 In. S/A.

**CONTAINER CHASSIS:** 6- Strick.

**TRAILERS:** 2012 Aulick Belt • Benlee 45 Ft Rolloff • Croft GT-200C S/A Tow Dolly • Custombuilt 9 Ft x 7 Ft 6 In. S/A Boat • Escort S/A Boat • Four Winds 18 Ft 6 In. x 6 Ft 4 In. T/A Boat • Pelsue Fost 11 Fiber Optics • 2015 Towmaster 24 Ft x 8 Ft 6 In. • 8 Ft 6 In. Car Trailer S/A.

**14- MOBILE STRUCTURES:** Hooper Living Quarters Trailer Sleeper • 2- Unused - Suihe S408020P Storage Building • Unused - Suihe S308020DP Storage Building • 2- Unused - Suihe S306020DP Storage Building • Unused - Suihe S304020DP Storage Building • 4- Unused - Suihe 203012P Storage Building • Trailmobile 53 Ft T/A Portable Office Trailer • 2- 20 x 30 x 12 Ft Storage Building.

## Other items of interest

**TELESCOPIC FORKLIFTS:** Genie GTH-844 8000 Lb 4x4x4 • Gradall 534D-10 5000 Lb 4x4x4 • JCB 508C 5000 Lb 4x4 • JLG G642A 6000 Lb • Lull 1044C54 10000 Lb 4x4x4 • Lull 44C-54 Series 2 • Merlo SM40X • 2015 Merlo ROTO 40.30MCSS 8800 Lb 4x4x4 • Pettibone 1048 10000 Lb 4x4x4.

**22- FORKLIFTS:** Caterpillar FD35 Pneumatic • Caterpillar GP30 • Clark C15CL • Doosan GC25P-3 • Hyster H110XM • Hyster H70FT Pneumatic • 2- Hyster E60Z • Nissan PD155H • T&S Equipment PMP550DC 4000 Lb Electric • TCM FCG25T7T • Toyota 8HBE30 • Toyota 8FGU25 • Toyota 7FGCU25 • Toyota 6FGCU25 • 6- Yale GC080VX.

**10- SCISSORLIFTS:** Economy SP2130 • Genie GS1930 • 6- Haulotte 3347E • JLG CM1732 Electric • MEC 2034.

**57- BOOM LIFTS:** Ballymore Electric • Bil-Jax 4527xA Articulated towable • 2- Bil-Jax XLT1571 • Genie Z-60/34J 4x4 Articulated • Genie Z60/34 • 2- Genie S60 • Genie Z45/25J 4x4 • Genie TMZ34/19 Towable • 2013 Genie Z-30/20N RJ Electric Articulated • Genie IWP-25S Electric Personnel Lift • Haulotte HA80JRT • Haulotte HA80JRT 80 Ft • 2- Haulotte HA46JRT • 3- Haulotte HB40 • 2009 JLG 800S 4x4 • JLG 800S 4x4 • JLG 600SJC Crawler • JLG 600S 4x4 • JLG 400S 4x4 • JLG T350 • JLG 12SP • 29- JLG 12SP Electric • Workforce XLT1571 Electric.

**4WD AGRICULTURAL TRACTORS:** 2014 Case IH Steiger 600.

**BELTED AGRICULTURAL TRACTORS:** 2016 Case IH STX540 QuadTrac • 4- Case IH QuadTrac 540.

**MFWD AGRICULTURAL TRACTORS:** Bobcat CT440B.

**UTILITY TRACTORS:** Massey Ferguson 2635 4WD.

**DISCS:** Taylor Way 20 In. • Pull Behind 16 In.

**MOWERS:** Ferris FB13250BS Walk Behind • Jacobsen HR5111.

**PULL SCRAPERS:** 2- John Deere 1812C.

**LANDSCAPE EQUIPMENT:** Billy Goat BC2401H Walk Behind Brush Mower • Billy Goat SV50-H Lawn Vacuum • Bluebird 968999351 Sod Cutter • Bluebird 135202 Lawn Comber • Bluebird 82252 Power Lawn Aerator • Bluebird F-400 Walk Behind Comber w/Catcher • Bluebird F20B Lawn Comber • Classen TA-26D Lawn Aerator • Cushman 934005 Landscape Mower • Earthquake Vector Rototiller • Gandy 60 In. Lawn Aerator • Goosen NA6000ESME Bale Chopper • Midwest TRV-26H Splitter • Mowhawk RT60 60 In. Rototiller • Praxis PRX 13.0 Walk Behind Stump Grinder • Ram 190432 Splitter • Vermeer SC252 Stump Grinder • Woods GB172 72 In. Pull Behind Box Scraper.

**UTILITY EQUIPMENT:** Arnco 5 Ft 10 In. x 7 Ft S/A Portable Puller/Tensioner • Super Products Vac Unit.

**SEWER & WATER:** 24 x 8 Ft • 16 x 8 Ft • 9 Cu Yd Stone Box • 2- 8 x 8 Ft Man Hole • 6 x 6 Ft Aluminum • Spreaders.

**15- BARGES:** Alton Andrew 70 Ft x 50 Ft x 6 Ft Spud • Barracuda 12 Ft x 10 Ft 58 Ft 6 In. x 17 Ft • Dean R Smith 120 Ft x 48 Ft x 7 Ft Crane • Jeffboat 200 Ft x 35 Ft x 12 Ft Open Hopper • Knudson Brothers 125 Ft 7 In. x 31 Ft 6 In. x 12 Ft Dump Scow • Marine Iron Shipbuilding 125 Ft 7 In. x 31 Ft 6 In. x 12 Ft Dump Scow • Trinity 1137820 200 Ft x 35 Ft x 12 Ft Hopper. 50 Ft x 5 Ft 6 In. x 1 Ft 6 In. Work Barge • 2- 42 Ft x 9 Ft x 3 Ft Flat Work • 40 Ft x 5 Ft x 1 Ft Flat Work Barge • 22 Ft x 10 Ft Spreader Barge • 19 Ft 5 In. x 13 Ft 6 In. x 3 Ft • 16 Ft x 6 Ft 6 In. x 1 Ft • 4 Section 50 Ft x 40 Ft x 6 Ft.

**TUG BOATS:** Mighty Lydia 11 Ft x 26 Ft 10 Ft x 25 Ft x 3 Ft • Equitable Equipment Co. Jean C 23 Ft x 77 Ft 1 In. x 10 Ft 3 In. • Lorian Callie M 16 Ft 9 In. x 64 Ft x 8 Ft.

**PLEASURE CRAFT:** Alumacraft MV2072AW 20 Ft Boat • 2012 Alumacraft 20 Ft Aluminum Boat • Alumacraft 16 Ft Aluminum Boat • Alumacraft 16 Ft Boat • Mon Ark 23 Ft Boat • Polaris SL900 Fiberglass Jet Ski • Yamaha Wave Runner 3 Fiberglass Jet Ski • 42 Ft Boat.

**UTILITY CART:** Arctic Cat 700EFI 4x4.

**CONCRETE BUGGIES:** Etnyre Quad Chip Spreader • 2- Miller Concrete Buggy.

**UTILITY CART:** Polaris 500EFI 4x4 Side By Side.

**MARINE EQUIPMENT:** American General 70-B Winch • Clyde Electric Winch • Johnson 30 HP Outboard Boat Engine • Mercury 50 HP Boat Engine • Tohatsu MFS25D 25 HP Outboard Boat Engine • Yamaha 70 HP Outboard Boat Engine • Yamaha 40TLRZ 40 HP Outboard Boat Engine • 8800 Lb Vessel Anchor • 7000 Lb Vessel Anchor • 2000 Lb Anchor • 2- 21 Ft 7 In. x 18 Cofferdam • Qty of 12 In. Poly Dredge Pipe • 9- Vessel Anchor • Suction Intake • Qty of Turbidity Curtain • Qty of Poly Dredge Pipe • Anchors.

**AIR COMPRESSORS:** 2011 Atlas Copco GA37125AP • Atlas Copco XAS185 • Ingersoll-Rand 90 CFM Portable • Ingersoll-Rand • Quincy 350 • Sullair 1300HDAFTQ Tri/A • Sullair 1300 • Sullair 185JD 185 CFM S/A.

**14- CONSUMER GENERATOR SETS:** Coleman PM0606560 6.5 KW • 3- Coleman PM0435003 5 KW • Coleman PM0433750 3.75 KW • Coleman Powermate 5 KW Portable • Craftsman 3.6 KW • 3- Honda EU2000I • Master MGH-10000 10 KW • Power Guard W24 2.4 KW • 2- Wacker G2.5A 2.5 KW.

**LIGHT GENERATOR SETS:** Magnaplus 283CSL1507 30 KW Skid Mtd • Onan 1750DYG15R9222E 175 KW Skid Mtd • Wacker G150 121 KW.

**LIGHT TOWERS:** Ingersoll-Rand LIGHTSOURCE60HZ • Wacker LTW 20 • Wacker LTW 6.

**18- WELDERS:** General Electric 300 Amp Electric • Hobart 300 Amp Electric • 2012 Lincoln Vantage 500 Amp • Lincoln • Miller DU-OP 600A Portable • 2011 Miller Big Blue 500D 500 Amp Portable • Miller Big Blue 500D 20 KW Portable • Miller 400 400 Amp • Miller Pipe Pro 304 Skid Mtd • 2- Miller S22P12 Wire Feed • Miller X-Treme 12VS Wire Feed • 2- Miller 8.5 KW • Thermal Arc Wire Feed • Whis-perweld DLW400ES 400 Amp Portable AC/DC • Qty of Miller.

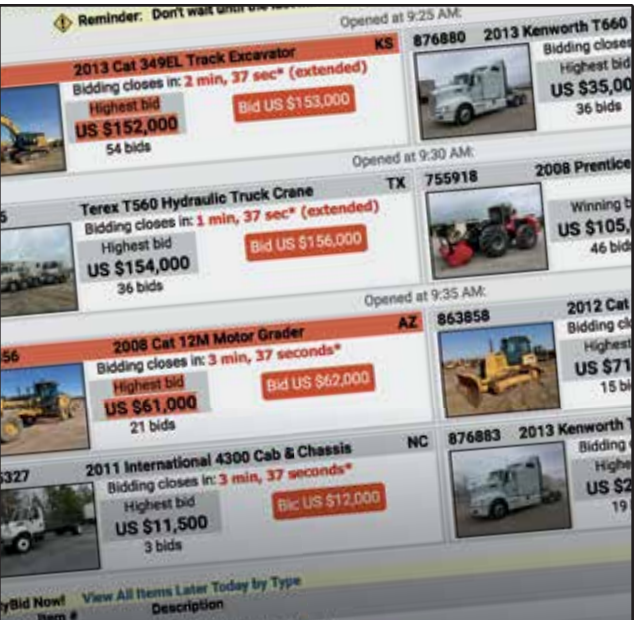
**PUMPS:** Eliminator MHLH8S1506T4 8 In. Submersible • Gorman-Rupp 66B 6 In. Skid Mtd • 6- Honda WB30XT 3 In. • 2- Honda WB30X 3 In. • Impeller 12 In. Skid Mtd Booster • NLB 10250D 103000 PSI Quintriplex Hydroblaster • NLB 10250 Quintriplex Hydroblaster • 2- Northstar 3 In. • Stow T200 2 In. Trash • Tsurumi T-604-6334 2 In. Electric Trash • Qty of Tsurumi NK2-22 3.5 In. 3 In. Submersible • Qty of Sump • Qty of Misc Pumps.

**TANKS:** Unused - Emiliana Serbatoi Carrytank 440 3000 Litre • 2- Unused - Emiliana Serbatoi Carrytank 440 400 Litre • 4- Unused - Emiliana Serbatoi Carrytank 220 200 Litre • 4- Unused - Emiliana Serbatoi TF3/50 3000 Litre • 4000 Gallon Fuel • 1600 Gallon Water • Qty of Oil Changing • Qty of Oil/Antifreeze • Qty of Misc Fuel • Qty of Caged Poly • Fuel.

**CONCRETE PUMPS:** Schwing P88.

**PILE HAMMERS:** Arrow Master HJ1250R Hydraulic.

**ITEMS INCLUDE:** Concrete Equipment • Containers • Crane Accessories • Equipment Attachments • Demolition & Recycling Attachments • Tractor Attachments • Truck Attachments • Industrial Items • Equipment Parts • Shop & Warehouse Items • Parts & Stationary Items - Construction & Transportation.



**Explore More Equipment**

Check IronPlanet's weekly online equipment auctions

[ironplanet.com](http://ironplanet.com)



**Buy Penske trucks & vans with a solid track record.**

Ritchie Bros. unreserved public auctions offer a great opportunity to buy trucks and vans from leading transportation companies like Penske who keep their fleets in top condition.

- ▶ Professionally-maintained fleet trucks
- ▶ Clear title – or your money back
- ▶ Up to 100% financing available



See current inventory and auction details on our website [rbauction.com/transportation](http://rbauction.com/transportation)

**Upcoming auctions around the world**

**USA**

Lexington, KY	May 30
Gillette, WY	Jun 1
North East, MD	Jun 5
Columbus, OH	Jun 6
Nashville, TN	Jun 7
Wasilla, AK	Jun 9
Sacramento, CA	Jun 12
Chicago, IL	Jun 15
Houston, TX	Jun 19–20
North Franklin, CT	Jun 22
Los Angeles, CA	Jun 26
Atlanta, GA	Jun 27–28
Chehalis, WA	Jun 29
Salt Lake City, UT	Jul 10

**Canada**

Chilliwack, BC	May 30
Montreal, QC	Jun 5–6
Edmonton, AB	Jun 12–14
St. John's, NL	Jun 20
Thunder Bay, ON	* Jun 22
Toronto, ON	Jul 10–11

**International**

Ocana, ESP	Jun 6–8
Polotitlan, MEX	Jun 8
Meppen, DEU	Jun 12–13
Caorso, ITA	Jun 14–15

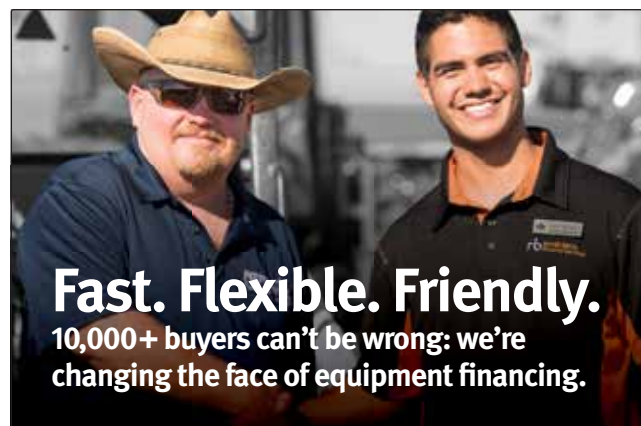
\* NOTE: NEW DATE



2014 Sennebogen 825M



2013 Hitachi ZX210F-3



**Fast. Flexible. Friendly.**  
10,000+ buyers can't be wrong: we're changing the face of equipment financing.

Get fast approvals, and the freedom and flexibility to buy what you need, when you need it.

Apply today at 1.855.331.7237 or

[rbauction.com/PurchaseFlex](http://rbauction.com/PurchaseFlex)



Manitowoc 4100W 4100W Vicon Series I & II 230 Ton  
To be sold by photo



Equitable Equipment Co Jean C 23 Ft x 77 Ft 1 In. x 10 Ft 3 In.  
To be sold by photo



2016 Case IH STX540 Quadtrac



3 of 8 - 2018 Ranco LW2140 40 Ft 21 Yard

» See complete and up-to-date listings for this auction at [rbauction.com](http://rbauction.com)



Like us for news, video & photos  
[facebook.com/RitchieBros](https://www.facebook.com/RitchieBros)

Chicago, IL | June 15, 2018 (Friday)

[rbauction.com](http://rbauction.com)

**rb RITCHIE BROS.**  
Auctioneers®

60  
YEARS