



2012 Case IH 500 & Case IH STX450



Caterpillar D6R LGP



3 - 2016 Peterbilt 367



2013 John Deere 6125R



2013 & 2012 Caterpillar 329EL

NEW DATE!
NOW APRIL 12!

rb RITCHIE BROS.
Auctioneers®

60
YEARS

Grande Prairie, AB

April 12, 2018 (Thursday)

Unreserved public auction

ACCEPTING CONSIGNMENTS, CONTACT US NOW

rbauction.com/Grande-Prairie

Grande Prairie, AB

April 12, 2018

Thursday 8:00 am

Phone: **780.538.1100**

Fax: 780.539.7230

Auction location: 721076 Range Road 51,
Grande Prairie, AB, T8X 4G1

647 items & counting

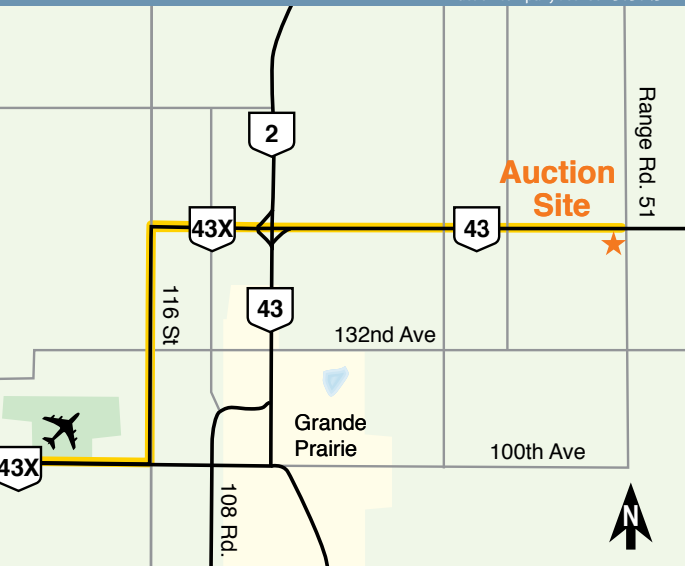
Bid in person or online

On-site registration starts: Apr 7 (Sat)

Inspection hours: Mon–Fri, 8 am – 5 pm

Items must be removed by: Apr 20 (Fri)

Auction company license #303043



Take advantage of exclusive rental car discounts.

AVIS code: C039702 | **Budget code:** A062002

Auction highlights

Major realignment:

EW Services Inc.

Equipment from:

Breakthrough Oilfield Services Ltd.

Double L Enterprises Ltd.

IPAC Services Corp

Performance Vac & truck Services

Ram Oilfield Ltd.

Timber Pro Logging

and other owners.

Visit rbauction.com for complete auction information



Full equipment listings, more photos and detailed equipment information



New additions to each auction – items added daily!



Deposit and payment information, including financing, wire transfer accounts and taxes



Full auction schedule, with times and lot numbers



Maps, hotels and other local services

Auction notes

- ▶ Every item is sold 'as is, where is'
- ▶ International and online bidders – you may need to place a refundable deposit before you bid – check the auction details on our website for more information
- ▶ Transaction fee: (a) 10% on all Lots selling for \$5,000 or less, (b) 3.85% on all Lots selling for over \$5,000 up to \$33,500, with a minimum fee of \$500 per Lot or, (c) \$1,290 on all Lots selling for over \$33,500.

Directions to auction site

From Grande Prairie Airport, left on Hwy 43 for (1.2 km). Turn left on 116 Ave for (8 km). Turn right on Hwy 43X for (19.2 km). Auction site is on the right at Range Road 51.



Caterpillar D6N LGP



Caterpillar D6N LGP



1 of 2 – Caterpillar D7R XR Series II



1 of 2 – Bobcat S250



Caterpillar 143H VHP Plus AWD



2013 Caterpillar 336EL



2014 Doosan DX180LC



1 of 3 – Late Model John Deere 135D



2015 Tigercat 870C w/Tigercat ST5702



2015 Hitachi ZX210F3 w/Waratah 622C



2015 Hitachi ZX240FS



2011 John Deere 848H



2015 Freightliner Coronado



2011 Kenworth T800 11245 Litre



2009 Kenworth T800 Vac



1 of 3 – 2013 Kenworth T800



2014 Kenworth T800 16153 Litre Hydro



2017 BWS EZ-2-Load



2 – 2016 Volvo VNL730 & 2 of 5 – Late Model Lode King Prestige



2015 Doepker Impact



Genie GTH1056



John Deere 8970



2011 Case IH Puma 215



John Deere 6715



2016 Kubota M6141



2 – 2011 Claas Lexion 760



2012 Bourgault 3320PHD QDA 76 Ft w/6550ST



2 – 2009 John Deere 635D & 2013 & 2010 Horst CHCF36

Real estate selling from this Grande Prairie auction

Property may be viewed without an appointment



Henry & Karen Chernuka – Retirement Auction

15 Parcels of Farmland – 2369.54± Title Acres
\$4,380 Surface Lease Revenue – Rycroft, AB

1

AB/MD of Spirit River

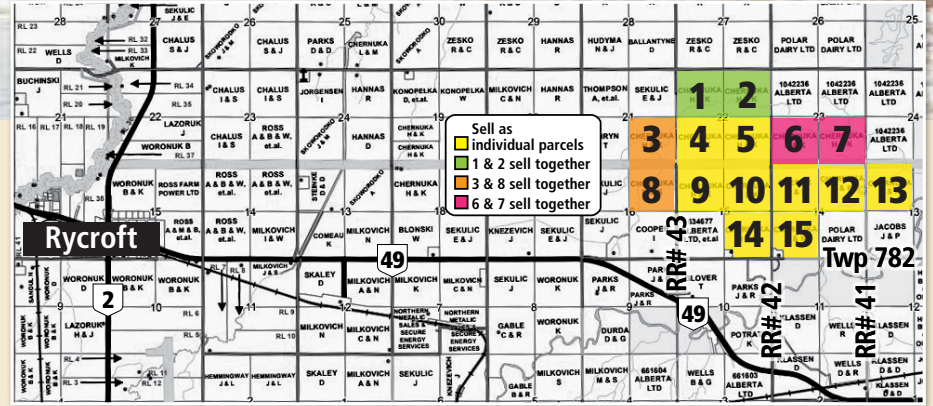
Parcels 1 to 15 – Farmland

- ▶ A complete listing of cultivated acres per quarter as well as 2017 crop info can be found at rbauction.com/realestate

GRAIN BINS SELL SEPARATE – Located on Parcel 8 & 14

- ▶ (16) 2300± Bushel Hopper Bins

Owner – Henry Chernuka: 780.765.2191
Ritchie Bros. Territory Manager – Mike Slon: 780.518.6249
Realtor® – Rick Wallan: 780.518.3313 Brokerage – All Peace Realty Ltd.



Property may be viewed by appointment



Highgrove Holdings Inc.

71.12± Title Acres – 7200± Sq Ft Shop & Office – Grande Prairie, AB (Grovedale)

2

Grovedale, AB

Parcel 1 – Lot 1 Block 1 Plan 1024120 – 71.12± Title Acres

- ▶ 2012 built 7200± sq ft engineered shop & office. 6400± sq ft of shop w/ (2) tracked equipment service bays. Heavy vehicle service bay w/ Bendpak 35,000 lb vehicle hoist (sells separate). 118 ft drive through wash bay, (5) 16 ft wide x 18 ft high overhead doors and 800± sq ft office. 10± ac compacted clay and graveled yard. Security fenced, Zoned AG 2, taxes \$9,496.43. The balance of the land is undeveloped. Phase 1 Environmental Site Assessment.

Contact – Aron Frieson: 780.228.7096
Ritchie Bros. Territory Manager – Kiefer Smiley: 587.297.2847
Ritchie Bros. Real Estate – Jerry Hodges: 780.706.6652 Brokerage – Ritchie Bros. Real Estate Services Ltd.



MNP Ltd. in its Capacity as Receiver of Debcur Holdings Ltd.

Country Acreage & Farmland – 63.1± Title Acres – 1550± Sq Ft Home & Shops – Spirit River, AB

3

AB/Saddle Hills County

Parcel 1 – PSW 15-78-7-W6 – 63.1± Title Acres

- ▶ 1999 1550± sq ft home w/ attached garage, 2005 42 x 92 ft shop, 1994 30 x 45 ft shop w/ attached 1066± sq ft two-storey office, 60 x 120 ft pole machine shed, natural gas, potable water cistern, (2) septic systems, 35± ac cult, balance yard site & bush, (3) dugouts, 2017 taxes \$4068.46, zoned Heavy Rural Industrial (HRI)*
- ▶ 48-man work camp (sells separate)

Ritchie Bros. Territory Manager – Gord Aeby: 780.402.5893
Realtor® – Rick Wallan: 780.518.3313 Brokerage – All Peace Realty Ltd.



For auction and property details visit: rbauction.com/realestate

Real estate selling from this Grande Prairie auction

Property may be viewed without an appointment

Dell Berge

1 Parcel of Farmland – 160± Title Acres – Rolla, BC

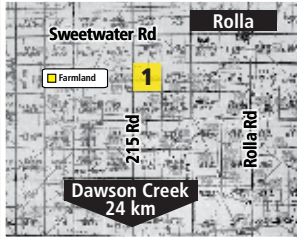
4

BC/Peace River Land District

Parcel 1 – SW 31-79-14-W6

160± Title Acres – Farmland

- ▶ 159± ac cult, wheat in 2017, balance bush, 2017 taxes \$87.84



Owner – Dell Berge: 250.784.4158
Ritchie Bros. Territory Manager – Mike Slon: 780.518.6249
Realtor® – Tom Moran PREC*: 250.784.7090
Brokerage – Re/Max Dawson Creek Realty

Property may be viewed without an appointment

Guy & Claude Levesque

1 Parcel of Farmland – 38.73± Title Acres – Falher, AB

5

AB/Town of Falher

Parcel 1 – PSW 4-78-21-W5
38.73± Title Acres – Farmland

- ▶ 38± ac cult, canola in 2017, town water & sewer to property line, NG across road, Hwy 49 frontage, zoned Urban Reserve District, 2017 taxes \$100



Owners – Guy Levesque: 780.933.1076
Claude Levesque: 780.837.0738
Ritchie Bros. Territory Manager – Mike Slon: 780.518.6249
Realtor® – Rick Wallan: 780.518.3313 Brokerage – All Peace Realty Ltd.



Property may be viewed without an appointment

Bobby Jackson

2 Undeveloped Residential Lots
1.07± & 1.41± Title Acre Lots – Debolt, AB

6

Debolt, AB – Creeks Crossing Subdivision

Parcel 1 – Lot 13 Block 2 Plan 0821080 – 1.41± Title Acres

- ▶ 40 Creeks Crossing Rd, undeveloped, full municipal services, paved streets, street lighting, high speed internet available, restrictive covenants apply, 2017 taxes \$2013.30

Parcel 1 – Lot 13 Block 2 Plan 0821080 – 1.41± Title Acres

- ▶ 53 Creeks Crossing Rd, undeveloped, full municipal services, paved streets, street lighting, high speed internet available, restrictive covenants apply, 2017 taxes \$1998.36

Owner – Bobby Jackson: 780.626.5056
Ritchie Bros. Territory Manager – Mike Slon: 780.518.6249
Realtor® – Rick Wallan: 780.518.3313 Brokerage – All Peace Realty Ltd.

Property may be viewed without an appointment

Bobby Jackson

2 Undeveloped Residential Lots
(2) 12.21± Title Acres – Manning, AB

7

AB/ County of Northern Lights

Parcel 1 – Lot 9 Plan 9925979 – 12.21± Title Acres

- ▶ Undeveloped, spruce & poplar, municipal water, natural gas & power to property line, dugout, 2017 taxes \$212.07

Parcel 2 – Lot 3 Plan 9925979 – 12.21± Title Acres

- ▶ Undeveloped, 2± ac bush, spruce & poplar, municipal water, natural gas & power to property line, 2017 taxes \$212.07

Owner – Bobby Jackson: 780.626.5056
Ritchie Bros. Territory Manager – Mike Slon: 780.518.6249
Realtor® – Rick Wallan: 780.518.3313 Brokerage – All Peace Realty Ltd.

May be viewed without an appointment

St. Isidore Co-op Fertilizer Plant & Buildings (Land not included) – Manning, AB

8

Fertilizer Plant & Buildings:

- ▶ (4) 2010 Meridian 1625E 165± Tonnes Epoxy Lined Hopper Bins
- ▶ 1995 Wheatland 1210E 43± Tonnes Epoxy Lined Hopper Bin
- ▶ Fertilizer Leg
- ▶ Speed King 6-8 Tonne Vertical Blender
- ▶ 75± Ft Fertilizer Conveyor
- ▶ 40 Ft x 20 Ft Office Trailer
- ▶ 30 Ft x 20 Ft Steel Chemical Shed

Contact – Dale Gach 780.618.5781
Ritchie Bros. Territory Manager – Mike Slon: 780.518.6249



For auction and property details visit: rbauction.com/realstate



2015 Case IH WD1204 25 Ft



2 - Recon



2015 Montana 3610RL



Vertec VT6600 Dryer, Behlen Bins, Behlen 60 Ft Leg & Westfield Augers



40 x 20 Ft Office Trailer - To be sold by photo



2 - Darmani 2407 10500+-



Boss MH-E-65FT 100 KW



Travco 48 Man - To be sold by photo



Vacuworx RC10

Equipment listings

Construction

PIPELAYERS: 4- Caterpillar 561M.

CRAWLER TRACTORS: Case 850G • 2- Caterpillar D7R XR Series II • 2- Caterpillar D6R LGP • Caterpillar D6N LGP • Caterpillar D6H XL Series II • John Deere 850J LGP.

WHEEL LOADERS: Caterpillar 936E.

SKID STEER LOADERS: 2- Bobcat S250.

MOTOR GRADERS: 2- Caterpillar 160H • Caterpillar 143H AWD • John Deere 772CH • Volvo G746B AWD.

HYDRAULIC EXCAVATORS: 2013 Caterpillar 336EL • 2013 & 2012 Caterpillar 329EL • 2014 Doosan DX180LC • Hitachi LC330 • John Deere 270D • 2- 2013 & 2012 John Deere 135D.

MINI EXCAVATORS: Kobelco SK75.

ARTICULATED DUMP TRUCKS: Volvo A40C.

LOADER BACKHOES: Caterpillar 420 IT.

VIBRATORY SMOOTH DRUM ROLLERS: Case W602BPD.

TOW BEHIND ROLLERS: Sheepsfoot Tow Behind.

FELLER BUNCHERS: 2015 Tigercat 870C.

PROCESSORS: 3- 2015 Hitachi ZX210F3 Processor • Komatsu PC270LC • Komatsu PC250LC-6LE.

LOG LOADERS: Caterpillar EL200B Grapple • 2015 Hitachi ZX240F3 Grapple • 2014 Hitachi ZX240F-3 Grapple • 2- Caterpillar 330LL Butt-n-Top.

SKIDDERS: 2011 John Deere 848H Grapple • 2014 Tigercat 630D Grapple.

ENVIRONMENTAL EQUIPMENT: Fecon C87FM Mulcher.

CONVEYORS: 4- Unused - 2018 Better BE3660C 36 In. x 60 Ft Portable Stacking • 4- Unused - 2018 Super 36 In. x 60 Ft Portable Stacking.

WINCH TRACTORS: Kenworth W900 T/A Sleeper.

Trucks & trailers

24- TRUCK TRACTORS: 2015 Freightliner Coronado Tri Drive • International 9900I Sleeper T/A • 2012 Kenworth W900 Sleeper T/A • Kenworth W900 Sleeper T/A • 2- 2011 Kenworth T800 Tri Drive • 3- 2016 Kenworth T880 Sleeper T/A • Kenworth T300 S/A • Mack CXN613 T/A • 3- 2016 & 2014 Peterbilt 367 Tri Drive • 2013 Peterbilt 367 Sleeper Tri Drive • 2012 Peterbilt 367 Tri Drive • 5- 2012 Peterbilt 367 Tri Drive Sleeper • 2- 2016 Volvo VNL730 Sleeper T/A • 2014 Western Star 4900SA Sleeper Tri Drive • 2012 Western Star 4900SA Tri Drive • Western Star 4900FA Sleeper T/A ..

LOG TRUCKS: 2009 Kenworth T800 • 5- Kenworth T800

DUMP TRUCKS: Freightliner FL80 S/A • GMC 7000 S/A • International 9400 Eagle Sleeper T/A • Kenworth W900 T/A • Kenworth T800 Tri Drive • Mack CL733 T/A • Volvo Autocar T/A T/A • Western Star 4900SA Tri Drive.

WATER TRUCKS: Chevrolet C65 T/A Sprayer.

BOOM TRUCKS: Ford F600G w/Atlas 3006B • Freightliner M2106 T/A w/Terex BT2057 • 2011 Kenworth C500.

VACUUM TRUCKS: 2009 Combo Tri Drive Sleeper.

FUEL & LUBE TRUCKS: International 1594 Series S 9463 L S/A.

MECHANICS TRUCKS: 2012 Dodge 5500 Service • Ford F550 4x4 • Ford F350 4x4 Service.

VAN TRUCKS: 2- 2013 Chevrolet Express Van • Ford E350.

ROLLOFF TRUCKS: 2009 Freightliner M2106 T/A Hook.

CAB & CHASSIS TRUCKS: International 4300 S/A Sleeper.

FLATBED TRUCKS: 2013 Ford F250.

EMERGENCY VEHICLES: Chevrolet 1500 4x4 Fire Truck • Oskkosh A1834CI T/A Fire Truck.

SPORT UTILITY VEHICLES: 2014 Dodge Durango Citadel AWD • GMC Envoy • Land Rover LR3 SE 4x4 • Nissan Xterra.

11- PICKUPS: Chevrolet 1500 Extended Cab 4x4 • Dodge 2500 SLT Crew Cab 4x4 • 2013 & 2- 2012 Ford F350 Crew Cab 4x4 • 2012 Ford F250 XLT Crew Cab 4x4 • Ford F250 Crew Cab 4x4 • 2014 Ford F150 XLT Crew Cab 4x4 • 3- 2013 Ford F150 Crew Cab 4x4.

LOWBOYS: Aspen LB50-16 50 Ton 16 Wheel • 2017 BWS EZ-2-Load Tridem Double Drop • K-Line Tridem.

STEP DECK TRAILERS: 2015 Doepker 53 Ft Tridem • 2016 Lode King SD53 53 Ft Tridem • Manac 48 Ft T/A.

JEEPS: Knight KB-716 S/A.

HIBOYS: Fox 40 Ft T/A • Lode King PF9483 48 Ft Tridem • Lode King Tridem.

OILFIELD FLOATS: Knight 50 Ft x 8 Ft 6 In.

LOG TRAILERS & RIGGING: Doepker 53 Ft Tridem • Doepker B-Train • 3- Superior 51 Ft Tridem Hayrack • Superior 51 Ft Hayrack • Superior 45 Ft Tridem.

BOTTOM DUMP TRAILERS: Arnes Super B-Train • Decap 37 Ft Tridem • Gerrys Tridem • Load Line 41 Ft • Midland 42 Ft • Midland MG40TC3000 40 Ft Tridem • Midland 38 Ft Tridem.

END DUMP TRAILERS: 2013 Arnes Quad/A • 2- Arnes Quad/A • Cancade 16 Ft Tridem Pup • 2015 Doepker Impact Tridem • Langfab 14 Ft T/A Pup • 2013 Load Line Tridem Pup • 2010 Midland 36 Ft Tridem • Midland Tridem Pup.

14- GRAIN & SILAGE TRAILERS: Doepker Super B-Train • 4- 2016 & 2015 Lode King Prestige Super B-Train • 2011 Lode King Super B-Train.

TANK TRAILERS: 2- Unused - 2015 Meridian Fuel Express 43 T/A • Unused - 2015 Meridian Fuel Express Pr T/A • Tougas 18925 Litre Tridem.

EQUIPMENT TRAILERS: Load Trail • Lode King T/A Flatdeck Utility.

TRAILERS: 2015 Behnke 53 Ft Tridem Sprayer • Keen 41 Ft T/A Sprayer.

35- MOBILE STRUCTURES: 40 x 30 Ft Seed Shed • 40 x 20 Ft Office Trailer • 30 x 20 Ft Steel Chemical Shed • Garden Shed • Arctic 30 x 10 Ft Tridem Wellsite • National Wellsite Trailer 40 x 12 Ft Triple Skid Mounted First Aid Trailer • Northern 52 x 10 Ft Office Trailer • Northern Office Trailer • TA Skid Mounted Double-Ended Wellsite • Travco 48 Man Camp • Travco Skid Mounted 12 x 40 Ft First Aid Trailer • Westlake 30 x 10 Ft Tridem Wellsite.

Other items include:

TELESCOPIC FORKLIFTS: Genie GTH-1056 • 2013 Xtreme XR1534.

FORKLIFTS: Caterpillar GPL40 9000 Lb.

SEARCH IT.
FIND IT.
BID ON IT.

Download the
Ritchie Bros. app today.

rbauction.com/app



BOOM LIFTS: Genie Z45/25.

4WD AGRICULTURAL TRACTORS: John Deere 8970.

BELTED AGRICULTURAL TRACTORS: 2012 Case IH 500 Quadtrac • Case IH STX450 Quadtrac.

MFWD AGRICULTURAL TRACTORS: 2011 Case IH Puma 215 MFWD Tractor • Case IH Maxxum 140 MFWD Tractor • Case IH MXM120 MFWD Tractor • John Deere 6715 MFWD Tractor • 2013 John Deere 6150R MFWD Tractor • 2013 John Deere 6125R MFWD Tractor • 2016 Kubota M6141 MFWD Tractor.

UTILITY TRACTORS: John Deere 4410 • John Deere 2305 • John Deere 2155.

BALERS: 2013 Case IH RB564 Premium Round • 2011 Case IH RB564 Round • 2009 New Holland BR7090 Round.

COMBINES: 2- 2011 Claas Lexion 760 • Claas Lexion 590R • Claas Lexion 580R

SWATHERS & WINDROWERS: 2015 Case IH WD1204 25 Ft Swather.

AIR DRILLS & SEEDERS: 2011 Bourgault 3310 65 Ft • Flexi-Coil 5000 45 Ft Tow-Behind • Flexi-Coil 5000 51 Ft • Morris Maxim 50 Ft • 2012 Bourgault 3320PHD 76 Ft.

CULTIVATORS: Bourgault 8810 54 Ft Deep Tillage.

DISCS: Case Dot • 2014 Farm King 8700 26 Ft Tandem • 2014 Farm King 1275W 16 Ft Offset.

PLOWS: John Deere 3600 5.

HARROW BARS & PACKERS: Bourgault 7200-72 72 Ft • 2012 Bourgault 7200 84 Ft Heavy • 2010 & 2008 Macfarlane WDL2080-16 80 Ft Flex • Inland 55 Ft Diamond.

SPRAYER & SPREADING EQUIPMENT: Case IH SPX3200 90 Ft High Clearance • 2010 Farm King 1000 60 Ft High Clearance.

SPREADERS: Willmar Super 800 T/A.

HAYING EQUIPMENT: John Deere 705 Twin V Hay Rake • LMC 8907 Hydraulic Rotary Hay Rake.

42- GRAIN BINS: 6- Behlen 7300 +/- Bushel 22 Ft • 3- Behlen 2200 +/- Bushel Hopper Bin • Behlen 2200 +/- Bushel 2200 +/- Bushel Hopper Bin • 2- Behlen 2000 +/- Bushel • Butler 183 2000 +/- Bushel 18 Ft 3 Ring • 2- Butler 144 2000 +/- Bushel 14 Ft 5 Ring • 2- Darmani 2407 10500 +/- Bushel • 3- 2010 Meridian 1625EMWPIJC 165 +/- Tonnes Epoxy Lined Hopper Bin • 2010 Meridian 1625EMWPICJ 165 +/- Tonnes Epoxy Lined Hopper Bin • 15- Twister 2300 +/- Bushel 14 Ft 5 Ring Hopper Bin • Westeel-Rosco 2300 +/- Bushel 14 Ft 6 Ring Hopper Bin • 3- Westeel-Rosco 1200 +/- Bushel 14 Ft 4 Ring Hopper Bin • Westeel-Rosco 144 1650 +/- Bushel 14 Ft 4 Ring Hopper Bin • Wheatland 1210ESR 43 +/- Tonnes Epoxy Lined Hopper Bin.

GRAIN DRYERS: Vertec VT6600 Continuous.

14- GRAIN HANDLING EQUIPMENT: 65 Ft Leg • Fertilizer Leg • 2- Auger • Farm King 6 In. Vac • Handler Vac • GrainMax 4371 Grain Auger • R & R Industries Inc 75 +/- Ft Fertilizer Conveyor • Ranco Transfer Fertilizer Conveyor • Sakundiak TL10-39 10 In. x 39 Ft Grain Auger • Speed King 6-8 Tonne Vertical Blender • Westfield MK130-71 Plus 13 In. x 71 Ft Mechanical Swing Grain Auger • Westfield MK100-61 10 In. x 61 Ft Mechanical Swing Grain Auger • Westfield Transfer Auger.

PULL SCRAPERS: 2017 Industrias America F12 12 Ft Hydraulic Box • 2017 Industrias America F10 10 Ft Hydraulic Box.

AGRICULTURAL EQUIPMENT: Custombuilt Swather Mover • 2- Farm King C1000SR 10 Ft Swath Roller.

LANDSCAPE EQUIPMENT: 4- Unused - Qty of (60) HD 8 Ft x 6 Ft Fencing • Hydraulic Tree Spade.

LIVESTOCK EQUIPMENT: Custombuilt Pull Type Calf Catcher Livestock Handling Equipment • 2012 Hay 2650 Bale Processor.

ALL TERRAIN VEHICLES: 2011 Kubota KC120HC Rubber Tracked Carrier Amphibian Unit.

RECREATIONAL VEHICLES: Hagglund Personnel Carrier • 2015 Montana 3610RL T/A Fifth Wheel Travel Trailer • 2009 Prairie Schooner 36 Ft Tri/A 5th Wheel Travel Trailer • Travelaire Kustom 26 Ft T/A 5th Wheel Travel Trailer.

UTILITY VEHICLE: 2013 Polaris Ranger 900 XP 4x4 Side by Side Utility Vehicle.

AIR COMPRESSORS: Challenge Air Portable.

INDUSTRIAL GENERATOR SETS: 2010 Caterpillar C32 1000 KW.

GENERATOR SETS: 2015 Cummins C200D6RT.

LIGHT GENERATOR SETS: Caterpillar D320A Skid Mounted • 2- Leatek Electronics LTG184HB 30 KW • 2014 Multiquip DCA45USI.

LIGHT TOWERS: 2- 2013 Allmand Bros. ML6/8V • 2013 Allmand Bros. Maxi-Lite II • 2- 2015 Alltech T/A Portable 45 KVA Stadium • 2013 Alltech Portable T/A 45 KVA Stadium • Boss MH-E-65FT 100 KW.

19- REAL ESTATE - AGRICULTURAL: AB/MD Of Greenview 71.12 +/- Acres on title • AB/MD Spirit River #133 Sw 23-78-4-W6 159 +/- Acres on title Farmland • AB/MD Spirit River #133 Se 23-78-4-W6 159 +/- Acres On Title Farmland • AB/MD Spirit River #133 Sw 22-78-4-W6 159 +/- Acres on title Farmland • AB/MD Spirit River #133 Se 22-78-4-W6 159 +/- Acres on title Farmland • AB/MD Spirit River #133 Nw 22-78-4-W6 159 +/- Acres on title Farmland • AB/MD Spirit River #133 Ne 22-78-4-W6 159 +/- Acres On Title Farmland • AB/MD Spirit River #133 Se 21-78-4-W6 159 +/- Acres On Title Farmland • AB/MD Spirit River #133 Ne 16-78-4-W6

159 +/- Acres on title Farmland • AB/MD Spirit River #133 Se 15-78-4-W6 153.23 +/- Acres on title Farmland • AB/MD Spirit River #133 Nw 15-78-4-W6 159 +/- Acres on title Farmland • AB/MD Spirit River #133 Ne 15-78-4-W6 159 +/- Acres on title Farmland • AB/MD Spirit River #133 Sw 14-78-4-W6 152.3 +/- Acres On Title Farmland • AB/MD Spirit River #133 Nw 14-78-4-W6 159 +/- Acres on title Farmland • AB/MD Spirit River #133 Ne 14-78-4-W6 156.51 +/- Acres on title Farmland • AB/MD Spirit River #133 Nw 13-78-4-W6 158.5 +/- Acres on title Farmland • Ab/Saddle Hills County Sw 15-78-7-W6 63.1 +/- Acres on title Country Acr Farmland • Ab/Town of Falher Psw 4-78-21-W5 38.73 +/- Acres on title Farmland • Bc/Peace River Land Distr Sw 31-79-14-W6 160 +/- Acres on title Farmland.

REAL ESTATE - RESIDENTIAL: 2- AB/Cnty Northern Lights 12.21 Acres +/- Undeveloped Residential Property • AB/Debolt Creeks Crossing 1.41 Acres +/- Undeveloped Residential Property • AB/Debolt Creeks Crossing 1.07 Acres +/- Undeveloped Residential Property.

ITEMS INCLUDE: Welders • Pumps • Tanks • Survey Equipment • Pipeline Equipment • Containers • Industrial Plant Equipment • Drill Parts & Accessories • Equipment Attachments • Tractor Attachments • Truck Attachments • Industrial Items • Equipment Parts • Shop & Warehouse Items • Parts / Stationary - Transportation.



Fast. Flexible. Friendly.
10,000+ buyers can't be wrong: we're changing the face of equipment financing.

Get fast approvals, and the freedom and flexibility to buy what you need, when you need it.

Apply today at 1.855.331.7237 or

rbauction.com/PurchaseFlex

Opportunity at work



Build a better career in Sales

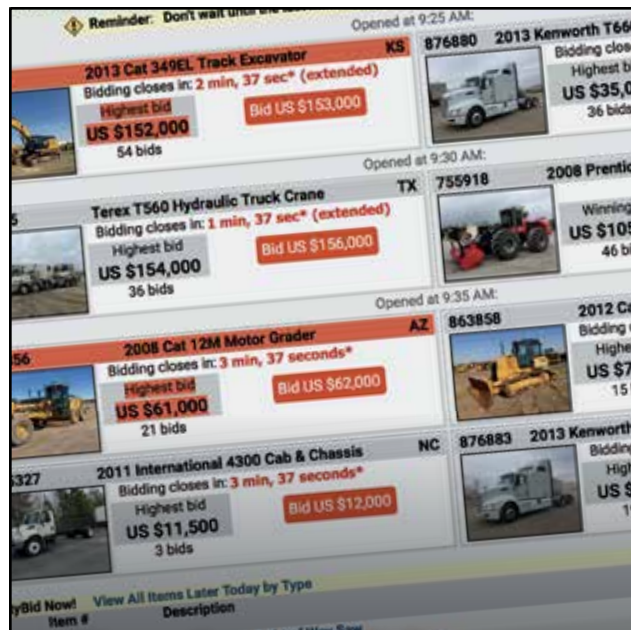
Join a growing global company that offers endless career and learning opportunities with a work culture like no other.

Why you should join us:

- ▶ Move your Sales career forward with our training, development and leadership programs
- ▶ Enjoy a competitive salary and benefits package that takes care of you and your family
- ▶ Work with amazing, talented people around the globe, every day

Apply today

RitchieBros.com/careers



Explore More Equipment

Check IronPlanet's weekly online equipment auctions

ironplanet.com



Upcoming auctions around the world

Canada

Regina, SK	Mar 27
Montreal, QC	Mar 27-28
Saskatoon, SK	Apr 9-10
Grande Prairie, AB	Apr 12
Truro, NS	Apr 13
Regina, SK	Apr 19
North Battleford, SK	Apr 24
Edmonton, AB	Apr 24-27
Toronto, ON	May 8-9
Edmonton, AB	Jun 12-14

USA

Salt Lake City, UT	Mar 26
North East, MD	Mar 27
Kansas City, MO	Mar 28
Lignite, ND	Mar 28
Atlanta, GA	Mar 30
Columbus, OH	Apr 11
Houston, TX	Apr 17-18
Nashville, TN	Apr 20

International

Donington Park, GBR	Mar 27-28
Narita, JPN	Apr 15
Geelong, AUS	Apr 19
Dubai, UAE	May 8-9
Moerdijk, NLD	May 17-18

* NOTE NEW DATE



3 – 2016 Kenworth T880 & 3 of 5 – Late Model Lode King Prestige



2011 Bourgault 3310PHD 65 Ft w/6700ST



2 of 4 – Caterpillar 561M



2013 John Deere 6150R

» See complete and up-to-date listings for this auction at

rbauction.com