



2014 Utility 53 Ft w/2013 Thermo King Precedent S600
& 2014 Utility 53 Ft w/2012 Thermo King SB230

rb RITCHIE BROS.
Auctioneers®

60
YEARS

Tipton, CA

May 22, 2018 (Tuesday)

Unreserved public auction



2016 Volvo VNL64T
CARB Compliant, Certified Clean Idle



2016 Mahindra mForce 105P Tier 4 Final
w/Mahindra 105SL



2012 Case IH Magnum 315 Tier 4 Interim



2011 Caterpillar 420E 4x4 Tier 3



2015 & 2014 Kenworth T680 CARB Compliant, Certified Clean Idle

ACCEPTING CONSIGNMENTS, CONTACT US NOW

rbauction.com/Tipton

Tipton, CA

May 22, 2018

Tuesday 8:00 am

Phone: **559.752.3343**

Fax: 559.752.1020

Auction location: 16140 Hwy 99, Tipton, CA 93272

750 items & counting

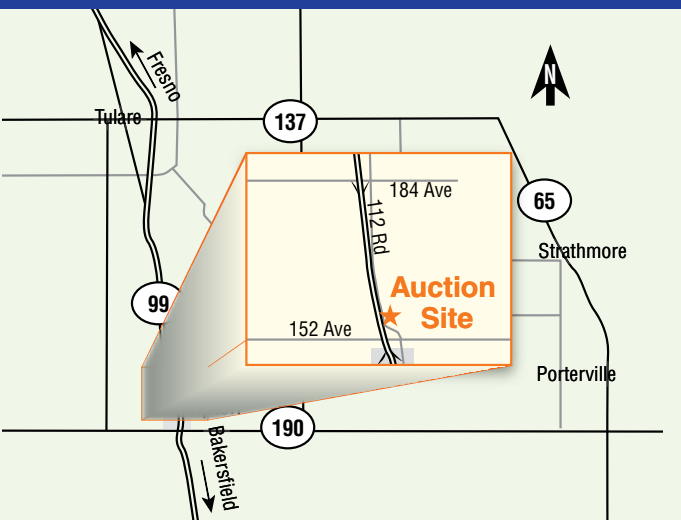
Bid in person or online

On-site registration starts: **May 20 (Sun)**

Inspection hours: **Mon–Fri, 8 am–5 pm**

Items must be removed by: **Jun 5 (Tue)**

Auction Company Bond #0470724, Auctioneer Greg Highsmith Bond # 0470728








Car rentals

Take advantage of exclusive rental car discounts.

AVIS code: C039702 | **Budget code:** A062002

Visit rbauction.com for complete auction information

-  Full equipment listings, more photos and detailed equipment information
-  New additions to each auction – items added daily!
-  Deposit and payment information, including financing, wire transfer accounts and taxes
-  Full auction schedule, with times and lot numbers
-  Maps, hotels and other local services

Auction notes

- ▶ Every item is sold 'as is, where is'
- ▶ International and online bidders – you may need to place a refundable deposit before you bid – check the auction details on our website for more information
- ▶ Transaction fee: (a) 10% on all Lots selling for \$5,000 or less, (b) 3.85% on all Lots selling for over \$5,000 up to \$33,500, with a minimum fee of \$500 per Lot or, (c) \$1,290 on all Lots selling for over \$33,500.

Directions to auction site

From the Fresno-Yosemite Int'l Airport: head northwest towards E Clinton Way and take the 1st left onto E Clinton Way. Continue onto N Peach Ave. Turn right to merge onto CA-180W. Take the exit onto CA-41 S toward Lemoore/Paso Robles. Take exit 126A to merge onto CA-99 S toward Bakersfield/Los Angeles. Take exit 81 for Avenue 184 off ramp. At stop sign turn right, heading east. Proceed over highway to Rd. 112 /East Frontage Rd. off Highway 99. Turn right, head 2 miles watching for signs to auction site.

LOOK FOR THIS ICON

on the cover of this brochure, on our website & on equipment at the site



Meet California Air Resources Board (CARB) regulations. Find CARB-compliant trucks at rbauction.com/CARB

Auction highlights

Trucks from the professionally-maintained fleet of:

Penske



Equipment from:

Booth Machinery



and other owners.



BID & BUY ON THE GO!

Download the Ritchie Bros. app today.

rbauction.com/app

Download on the **App Store** | GET IT ON **Google Play**



2 – Caterpillar 301.8C



John Deere 50D



Caterpillar IT28F



John Deere 624J



John Deere 410G 4x4



2016 Freightliner CA125SLP Cascadia CARB Compliant, Certified Clean Idle



5 – 2012 Freightliner M2112 Business Class CARB Compliant



1 of 2 – 2013 & 1 of 6 – 2012 Freightliner CA125SLP Cascadia CARB Compliant



International F9370



2013 Mack CXU613 CARB Compliant, Certified Clean Idle



4 – 2014 International ProStar+ 122 CARB Compliant, Certified Clean Idle



2013 Peterbilt 579 CARB Compliant, Certified Clean Idle



2013 Peterbilt 386 CARB Compliant, Certified Clean Idle



2009 Peterbilt 387 CARB Compliant



2- 2012 Kenworth T800 CARB Compliant, Certified Clean Idle



3 - 2014 & 2 - 2013 International ProStar+ 122 CARB Complaint, Certified Clean Idle



1 of 4 - Freightliner CL120 Columbia



3 - Freightliner FLD120 XL Classic



3 of 4 - Freightliner FLD120



Peterbilt 379



2 – Kenworth T800B



2015 Kenworth T680 CARB Compliant, Certified Clean Idle



2012 Peterbilt 384 CARB compliant, Certified Clean Idle



International 4200 w/Roots Rotary



Volvo ACL 4000 Gallon



1 of 2 – 2011 Freightliner M2106 Business Class CARB Compliant w/Thermo King



2 – 2013 & 1 of 3 – 2012 International 4300SBA DuraStar CARB Compliant



Kenworth T800 4000 Gallon



Murray 50 Ton 16 Wheel Expando



2012 Ledwell LW48HTHT2 48 Ft



Lufkin 26 Ft



5 - Convoy 24 Ft w/Convoy 24 Ft Pup



Caterpillar DP70 15500 Lb



1 of 3 - Case IH 9370



Fast. Flexible. Friendly.
 10,000+ buyers can't be wrong: we're
 changing the face of equipment financing.

Since 2011, we have helped more than 10,000
 Ritchie Bros. customers acquire more than
 \$1 billion in equipment needed to run their
 businesses. Get fast approvals, and the
 freedom and flexibility to buy what you need,
 when you need it.

Apply today at 1.855.331.7237
 or learn more at

rbauction.com/PurchaseFlex

rb RITCHIE BROS.
 Financial Services



1 of 2 – 2013 & 1 of 3 – 2012 John Deere 5101EN Tier 3



2009 John Deere 5101EN Tier 3



2006 New Holland TV145 Bi-Directional



1 of 2 – 2010 John Deere 5065E Tier 4 Interim



2016 New Holland T4.100V Tier 4 Final



2007 Freightliner M2106 Business Class w/Elgin Broom Bear



2 – Korvan 3000 Self-Propelled



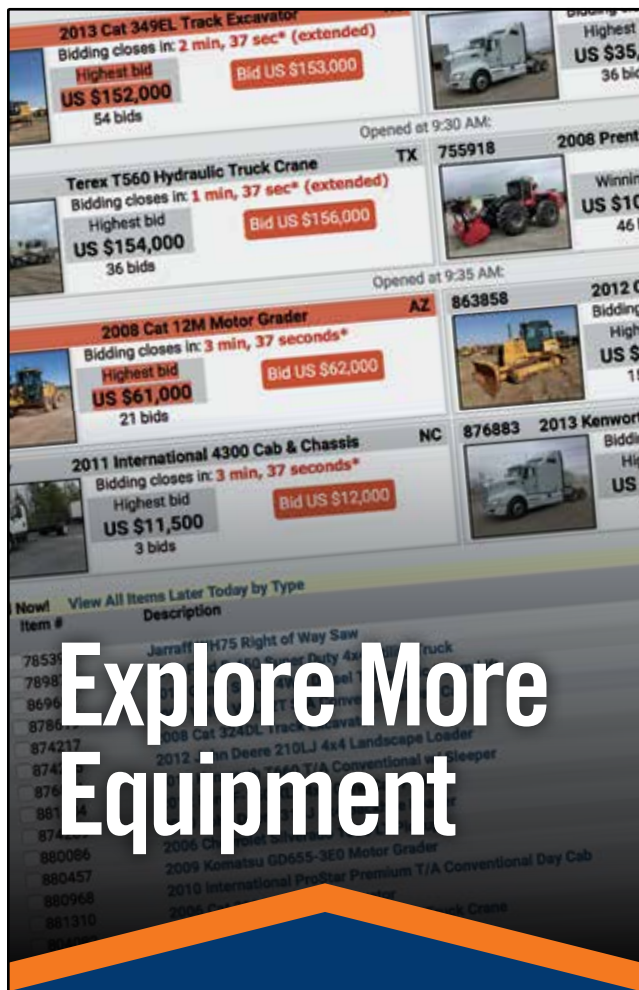
2011 Wacker Nueson G180 143 KW Tier 4 Interim



2012 Monteflora J330 11 Ft



2 – 2012 LDJ ADT750SS 750 Gallon



Explore More Equipment

Check IronPlanet's weekly online equipment auctions

ironplanet.com



Upcoming auctions around the world

USA

- Denver, CO May 9
- Fort Wayne, IN May 9
- Fort Worth, TX May 15–16
- Phoenix, AZ May 18
- Tipton, CA May 22
- Orlando, FL May 23
- Lexington, KY May 30
- Gillette, WY Jun 1
- North East, MD Jun 5
- Columbus, OH Jun 6
- Nashville, TN Jun 7
- Wasilla, AK Jun 9
- Sacramento, CA Jun 12
- Chicago, IL Jun 15
- Houston, TX Jun 19–20
- North Franklin, CT Jun 22
- Los Angeles, CA Jun 26

Canada

- Chilliwack, BC May 30
- Montreal, QC Jun 5–6
- Thunder Bay, ON Jun 8
- Edmonton, AB Jun 12–14

International

- Dubai, UAE May 8–9
- Rockingham, GBR May 9–10
- Moerdijk, NLD May 17–18

Opportunity at work



Build a better career in Sales

Join a growing global company that offers endless career and learning opportunities with a work culture like no other.

Why you should join us:

- ▶ Move your Sales career forward with our training, development and leadership programs
- ▶ Enjoy a competitive salary and benefits package that takes care of you and your family
- ▶ Work with amazing, talented people around the globe, every day

Apply today

RitchieBros.com/careers

Equipment listings

Construction

CRAWLER TRACTORS: Allis-Chalmers HD15A • Allis-Chalmers HD7.

WHEEL LOADERS: Caterpillar IT28F • Fiatallis.

CRAWLER LOADERS: Komatsu D66S-1.

SKID STEER LOADERS: John Deere 8875 • Thomas 175 High Lift.

MULTI TERRAIN LOADERS: 2012 John Deere 333D Compact Track Loader • 2011 John Deere 333D.

HYDRAULIC EXCAVATORS: John Deere 690B.

MIDI EXCAVATORS: John Deere 50D.

MINI EXCAVATORS: Kubota KX1213ST.

TRENCHERS: Ditch Witch 4010 4x4 Ride On Rubber-Tired.

LOADER BACKHOES: 2011 Caterpillar 420E 4x4 • Caterpillar 416C 4x4 • John Deere 410G 4x4 • John Deere 310SG • John Deere 310D.

TANDEM ROLLERS: Caterpillar CB434C Vibratory.

ROLLERS: Hyster 8 Wheel.

WALK BEHIND COMPACTORS: 2- Unused - King-Force KRM160L Jumping Jack • Mikasa MTX60HD Jumping Jack • 2- Multiquip MTX70 Jumping Jacks.

ENVIRONMENTAL EQUIPMENT: 2- Unused - 4 In. Wood Chipper • Vermeer BC1000 Portable Chipper.

CONVEYORS: 4- Unused - 2018 Better BE3660C 36 In. x 60 Ft Radial Stacking.

AGGREGATE EQUIPMENT: 3- Unused - 2018 Paladin 31.5 In. x 6 Ft 6 In. Magnet.

Trucks & trailers

117- TRUCK TRACTORS: Freightliner FLD12064T Day Cab S/A • 2013 & 5- 2012 Freightliner M2112 Business Class Day Cab T/A • 2016 • 2015 & 2- 2013 Freightliner CA125SLP Cascadia Sleeper T/A • 6- 2012 Freightliner CA125SLP Cascadia Sleeper T/A • 2013 Freightliner CA125DC Cascadia Day Cab T/A • 2- 2012 Freightliner CA125DC Cascadia Day Cab S/A • 22- 2012 Freightliner CA125DC Cascadia Day Cab T/A • 2011 Freightliner CA125DC Cascadia Day Cab S/A • 2- 2011 Freightliner CA125DC Cascadia Day Cab T/A • Freightliner FLD120 Day Cab T/A • Freightliner FLD120 Day Cab T/A • 3- Freightliner FLD120 Day Cab S/A • 7- Freightliner FLD120 Sleeper T/A • Freightliner CST120 Century Sleeper T/A • Freightliner C120 Century Sleeper T/A • Freightliner C112 Century Sleeper T/A • 2012 Freightliner CA12DC Cascadia Day Cab T/A • 5- Freightliner Columbia Day Cab S/A • International F9370 Day Cab T/A • International 8600 S/A • 3- 2014 International ProStar+122 Sleeper T/A • 3- 2014 International ProStar+122 Day Cab S/A • 3- 2014 International ProStar+122 Day Cab T/A • 2- 2013 Interna-

tional ProStar+122 Day Cab S/A • 2011 International ProStar+122 Day Cab T/A • 2013 International ProStar+113 Day Cab S/A • 4- 2011 International ProStar Premium Day Cab S/A • Kenworth W900 Day Cab S/A • 2- Kenworth T800B Day Cab S/A • 2- 2012 Kenworth T800 Day Cab T/A • 2015 Kenworth T680 Day Cab T/A • 2015 & 2014 Kenworth T680 Sleeper T/A • 8- 2013 Kenworth T660 Day Cab S/A • Kenworth T400 Day Cab S/A • 2013 Mack CXU613 Day Cab T/A • 2013 Peterbilt 579 Sleeper T/A • 2009 Peterbilt 387 Sleeper T/A • 2013 Peterbilt 386 Sleeper T/A • Peterbilt 382 Day Cab T/A • Peterbilt 379 Day Cab S/A • Peterbilt 379 Day Cab T/A • 2012 Volvo VNL64300 Day Cab T/A • 2012 Volvo VNL64T300 Sleeper T/A • 2011 Volvo VNL64T300 Day Cab T/A • 2016 Volvo VNL64T Sleeper T/A • Volvo Sleeper T/A.

DUMP TRUCKS: Ford F450 XL S/A • Freightliner FL112 T/A • Freightliner FL112 T/A • International 4300SBA S/A • Kenworth T600 T/A • Peterbilt 377 T/A • Western Star 5900 T/A • White 4964 T/A.

WATER TRUCKS: Ford L9000 Aeromax 2000 Gallon S/A • Ford L8000 4000 Gallon T/A • Ford F750 XL 2000 Gallon • Freightliner FL70 2000 Gallon S/A • GMC C7500 2000 Gallon S/A • International 2375 4000 Gallon 6x6 • Kenworth T800 4000 Gallon T/A • Volvo autocar 4000 Gallon T/A.

TANK TRUCKS: Kenworth T600 2000 Gallon.

BOOM TRUCKS: Chevrolet Kodiak w/RO Stinger • Ford F700 S/A w/JLG 1000BT • Ford F700 S/A w/RO Stinger TC2857 14 Ton • International 4700 S/A w/JLG 1218.

BUCKET TRUCKS: International 4900 S/A.

FUEL & LUBE TRUCKS: GMC TopKick S/A • 2- 2012 LDJ ADT750SS T/A Fuel & Lube Trailer.

MECHANICS TRUCKS: Ford F450 XL • International 4700LP S/A.

REEFER TRUCKS: 2- 2011 Freightliner M2106 Business Class S/A • 2011 Isuzu NPR COE S/A.

UTILITY TRUCKS: Dodge D500 • Ford F550 XL • Ford F350 XL Crew Cab 4x4 • Ford F250 XL Lariat Extended Cab 4x4.

12- VAN TRUCKS: Chevrolet Express S/A • 2009 Chevrolet Express Cargo Van • 2- 2015 Ford F650 S/A • 2013 Ford F450 XL • 2013 Ford F450 XL S/A • Hino 268 S/A • 3- 2013 International 4300SBA DuraStar S/A • 2- 2012 International 4300SBA DuraStar S/A • 2013 International 4300M7SBA DuraStar S/A.

LIVESTOCK TRUCKS: Freightliner FL70.

11- CAB & CHASSIS TRUCKS: Ford L8000 • Ford 8000 • 2011 Freightliner M2106 Business Class S/A • 4- 2011 Freightliner M2106 Business Class • 2015 Kenworth T680 T/A • 2012 Peterbilt 384 T/A • Peterbilt 379 T/A • Peterbilt 377 T/A.

10- FLATBED TRUCKS: Chevrolet 3500HD • Ford F550 XL Crew Cab • Ford F450 • Ford F350 XL • Ford F350 XL Crew Cab • Freightliner M2106 Business Class S/A • 2- Freightliner FL70 S/A • GMC C4500 S/A • International 4200SBA S/A.

20- PICKUPS: 2013 Chevrolet 1500 Silverado Extended Cab • 3- Chevrolet 1500 Silverado • 2012 Chevrolet Colorado Extended Cab • Chevrolet Colorado • 2011 Dodge 3500 Ram Long Horn Crew Cab 4x4 Dually • Dodge 1500 Ram • Dodge Dakota Extended Cab • Ford F350 • Ford F350 XL Crew Cab 4x4 • 2009 Ford F250 XL Extended Cab • 2013 Ford F150 • 2013 Ford F150 XL • Ford F150 • 2011 Ford Ranger Extended Cab • 2011 Ford Ranger • Ford Ranger • GMC 1500 Sierra • 2009 Toyota Tacoma Extended Cab 4x4.

AUTOMOBILES: Lincoln Town Car Limousine.

LOWBOYS: Cozad 60 Ton T/A Expando • Murray 50 Ton 16 Wheel Expando.

12- STEP DECK TRAILERS: Fontaine LDTF66549 49 Ft T/A Aluminum • 2- Fontaine 49 Ft Spread Axle • Fontaine 49 Ft T/A Aluminum • Fontaine 48 Ft Spread Axle Aluminum • Fruehauf 40 Ft T/A • Trail King 1944-1300 44 Ft T/A • Trail King TK70HT482 48 Ft T/A Hydraulic Tail • 3- Transcraft 40 Ft T/A Extendable • Transcraft DTL3-21-43 43 Ft T/A.

19- HIBOYS: Aztec 40 Ft x 96 In. T/A • Chaparral 48 Ft x 102 In. Spread Axle Aluminum • 2- East 48 Ft x 102 In. T/A Aluminum • Fontaine FTW58048WSAK 48 Ft x 96 In. Spread Axle Combinat • Fontaine EFTW58045F 45 Ft x 96 In. • Fontaine 48 Ft x 96 In. T/A • Great Dane GP245 45 Ft x 96 In. • Great Dane GPS45 45 Ft x 96 In. T/A • Lufkin FL-XL 48 Ft x 96 In. T/A Aluminum Spread • 2- Manac 10245101 45 Ft x 96 In. Spread Axle • Trail King NTX7000-482 48 Ft x 96 In. T/A • Trail King 48 Ft x 102 In. T/A Extendable • Transcraft 48 Ft x 102 In. Spread Axle • Transcraft 48 Ft x 102 In. T/A Combination • Transcraft 48 Ft x 102 In. Aluminum T/A • Utility 48 Ft x 96 In. T/A Combination • Wabash FLCVHST 48 Ft x 102 In. T/A.

BOTTOM DUMP TRAILERS: Cook Double Bottom Dump • 2- Fruehauf Double Bottom Dump.

END DUMP TRAILERS: Lufkin 26 Ft T/A • Western 32 Ft T/A Frameless.

REEFER TRAILERS: 2010 Utility Frozen 53 Ft x 102 In. T/A • 2- 2014 Utility VS2RA 53 Ft x 102 In. T/A • Utility VS2RA 53 Ft x 102 In. T/A.

21- GRAIN & SILAGE TRAILERS: Comme 24 Ft S/A Hopper • Comme 24 Ft 2/Axle Hopper • 5- Convoy 24 Ft S/A Hopper • 3- Convoy 24 Ft 2/Axle Hopper • Dorsey 24 Ft 2/Axle Hopper • Fruehauf 24 Ft S/A Hopper • 2- Fruehauf 24 Ft 2/Axle Hopper • Trailmobile 24 Ft S/A Hopper • Trailmobile 24 Ft 2/Axle Hopper • 2- Utility 24 Ft S/A Hopper • Utility 24 Ft 2/Axle Hopper • Utility Nut Hopper • Walinga 38 Ft T/A Grain.

VAN TRAILERS: 2- Stoughton ASVW486TSC 48 Ft T/A.

TANK TRAILERS: Heil 4600 Gallon T/A • West-Mark 4600 Gallon T/A • Custombuilt 5000 Gallon S/A.

13- EQUIPMENT TRAILERS: 2- Carson 16 x 7 Ft T/A • 2010 Custombuilt 20 x 7 Ft T/A • Custombuilt 9 Ft 6In. T/A • Custombuilt 8 x 6 Ft Utility Trailer • Eager Beaver 15 x 8 Ft T/A • 2016 H&H Trailers 20 Ft 6 In. x 8 Ft T/A • Interstate 22 Ft T/A • K-Dee 1085 • 2012

Ledwell LW48HTHT2 48 Ft T/A • 2014 Maxey 8 x 5 Ft S/A • Mil- lenium M10D24PA 19 x 8 Ft T/A • Zieman 23 x 8 Ft T/A.

REEL TRAILERS: K-Dee 1085 • Kiefer ICH-6000 • SBACH I-85.

TRAILERS: Red River Live Bottom • Valley chopper trailer 27 Ft x 8 Ft 6 In.

Agricultural

4WD AGRICULTURAL TRACTORS: Case 2470 Traction K • 3- Case IH Steiger 9370.

BELTED AGRICULTURAL TRACTORS: 2012 Challenger MT765C.

18- MFWD AGRICULTURAL TRACTORS: 2012 Case IH Magnum 315 • 2012 Case IH Magnum 290 • Challenger MT665B • 2- 2013 • 3- 2012 & 2009 John Deere 5101EN • 2- 2010 John Deere 5065E • John Deere 2350 • 2- Kubota M8200 • Landini Rex 105 • 2016 Mahindra 105p mForce • 2016 Mahindra MForce 105S • New Holland TN95FA.

BI-DIRECTIONAL TRACTORS: 2006 New Holland TV145.

2WD AGRICULTURAL TRACTORS: John Deere 5400N • John Deere 2440A • John Deere 2355N • John Deere 2355 • Zetor Proxima 8421.

UTILITY TRACTORS: 2- Case IH 3220 2WD • 3- Kubota L3430 MFWD • Massey Ferguson 394S MFWD • New Holland T4 4WD.

SKIP LOADERS: Case 480E.

COMBINES: New Holland TR98.

BALERS: Hesston 4690 Small Square • 2014 New Holland 340R Big Square Baler.

DISCS: Allis-Chalmers 20 Ft Offset Wheel • Custombuilt 12 Ft Offset • International 13 Ft Offset Wheel • Towner 13 Ft Offset Wheel.

HARROW BARS & PACKERS: Schmeiser 20 Ft Ring Roller.

SPRAYER & SPREADING EQUIPMENT: 500 gallon.

NH3 EQUIPMENT: 18 Ft Fertilizer Bar.

BREAKING EQUIPMENT: Big Ed 18 Ft Pull Type Ripper • Nikkel Iron Works 7 Ft.

FRUIT HARVESTING EQUIPMENT: Qty of 24 Ft Aluminum Orchard Ladders • Qty of 21 Ft Aluminum Orchard Ladders • Qty of 20 Ft Aluminum Orchard Ladders • AIM AGG220RH S/A Pull Type Fruit Cart • 2- Custombuilt S/A Fruit Cart • 2- Korvan 3000 Self-Propelled Grape Fruit Harvester • Labeco S/A Pull Type Fruit Cart.

NUT HARVESTING EQUIPMENT: OMC 3WMB Self-Propelled Nut Shaker • Weiss McNair JD80AC Self Propelled Nut Sweeper.

MOWERS: 7 Ft Flail Shredder • Alamo Industrial SH96 8 Ft Flail • Hustler • Unused - 2018 Suihe 72 In. Rotary.

HAYING EQUIPMENT: Hay Rake • Qty of Tytan 4000/440 Bailing Twine.

PULL SCRAPERS: 12 Ft Hydraulic • 2- Custombuilt 12 Ft Float • 2012 MonteFlori J330 11 Ft Ejector.

LANDSCAPE EQUIPMENT: 2- Unused - 20 Ft Bi-Parting Wrought Iron Driveway Gate • Barreto 28 In. Walk Behind Landscape Mower • Barreto Walk Behind Rototiller • BCS 739 24 In. Walk Behind Rototiller • Kubota 48 In. Landscape Mower • 12- Unused - Suihe 20 Ft Bi-Parting Wrought Iron Driveway Gate • 2- Unused - Suihe 14 Ft Bi-Parting Wrought Iron Driveway Gate.

LIVESTOCK EQUIPMENT: 6- Unused - A & K Best Panels 24 Ft x 66 In. Heavy Duty Panels • 7- Unused - A & K Best Panels 20 Ft x 54 In. Calf Panels • Custombuilt Stall Filler • Qty of Unused - Suihe 54 Powder Coated Corral Panels • Qty of Unused - Suihe 2 Livestock Shelters.

Other items of interest

ROUGH TERRAIN FORKLIFTS: Case 585E 5000 Lb • Eagle-Picher R80 8000 Lb • Manitou M40-2 8000 Lb.

14- FORKLIFTS: Caterpillar DP70 15500 Lb • 2012 Caterpillar 2P5000 5000 Lb • Hyster S50FT 4800Lb Warehouse • Linde 7000 Lb • Nissan 50 Warehouse • TCM FG30N7 6000 Lb • 7- 2014 Toyota 8FGCU25 4500 Lb • Toyota 8FGCU20 3150 Lb.

ELECTRIC FORKLIFTS: 4- Toyota 8BNCU18 3500lb Stand Up.

SCISSORLIFTS: Upright SL26 26 Ft.

BOOM LIFTS: Genie Z30/20N • Grove MZ76 • JLG 600A 4x4.

STREET SWEEPERS: Freightliner M2106 Business Class S/A Vacuum.

15- RECREATIONAL VEHICLES: 2- 2016 • 7- 2014 • 5- 2013 & 2012 Honda TRX250TM Quad.

ALL TERRAIN VEHICLES: 2014 Mahindra Sector/750 4x4.

Utility Vehicles: Kubota RTV900.

DRILLS: GMC General T/A w/ Ingersoll-Rand TH60 Drill Truck.

AIR COMPRESSORS: Ingersoll-Rand P185WJD Portable • Ingersoll-Rand PWD-160 185 CFM 2 Stage Portable.

LIGHT GENERATOR SETS: 2011 Hipower HRJW-90 • Magnum MMG45HK 44 KW • Wacker G180 143 KW Portable Stand-By.

LIGHT TOWERS: Magnum 4060IMH portable • 2- Power Mfg 4030S3L Portable.

ITEMS INCLUDE: Welders • pumps • tanks • sewer & water • concrete equipment • survey equipment • containers • sign boards • industrial plant equipment • engines • crane accessories • equipment attachments • tractor attachments • truck attachments • industrial items • equipment parts • shop & warehouse items • parts / stationary - transportation.



2012 Challenger 765C



2016 Mahindra mForce 105S Tier 4 Final



2012 Case IH Magnum 290 Tier 4 Interim



2014 New Holland 340R Cutter



Trail King TK70HT482 48 Ft



2015 Kenworth T680 CARB Compliant, Certified Clean Idle



8 - Kenworth T660 CARB Compliant, Certified Clean Idle



1 of 2 - Late Model - John Deere 333D Tier 3

» See complete and up-to-date listings for this auction at rbauction.com

Tipton, CA | May 22, 2018 (Tuesay)

rbauction.com

rb RITCHIE BROS.
Auctioneers®

60
YEARS