



2 – 2018 Kenworth T800 Winch



2 – Caterpillar 627G



2013 Hitachi ZX350LC-5N



2015 Elrus 2236 6X16 Jaw



2 – 2016 John Deere 853M



2014 Caterpillar 14M VHP Plus

NOW 5 DAYS
APRIL 24-28!

RITCHIE BROS.
Auctioneers® | **60**
YEARS

Edmonton, AB
April 24 – 28, 2018 (Tues–Sat)

Unreserved public auction



2014 Western Star 6900TS 8x8

Edmonton, AB

April 24 – 28, 2018

Tues–Sat 8:00 am

Phone: **780.955.2486**

Fax: 780.955.2662

Auction location: 1500 Sparrow Dr, Nisku, AB T9E 8H6

5800 items & counting

Bid in person or online

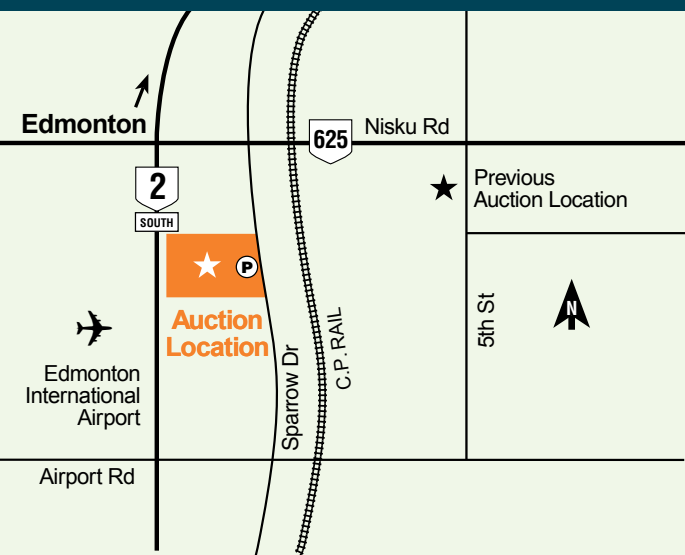
On-site registration starts: **April 21 (Saturday)**

Inspection hours: **Mon–Fri, 8 am–5 pm**

Apr 21,22 (Sat–Sun) & Apr 23 (Sat) for load out 8 am – 5 pm

Items must be removed by: **May 11 (Friday)**

Auction company license #303043



Take advantage of exclusive rental car discounts.

AVIS code: C039702 | **Budget code:** A062002

Auction highlights

Complete dispersal for:

Bar De Transportation (1999) Ltd.

Cierra Trucking Ltd.

H&E Oilfield Services

HiTrac Equipment Ltd.

Lacombe Trailer Sales & Rentals Inc.

Previously owned & operated by Bill Woof

NEC Construction Ltd.

Skyhawk Transport Services Ltd.

Major realignment:

Hammer's Gravel Supplies Ltd.

Martushev Logging Ltd.

Top Boys Oilfield Hauling Ltd.

Tri K Trenching Ltd.

Equipment from:

Big Freight Systems Inc.

BJ Services Holdings Canada ULC

Command Equipment Ltd.

Jaco Line Contractors Ltd.

JF Logging Ltd.

Mike Vail Trucking Ltd.

Morgan Equipment Ltd.

North Main Trucking

Pacesetter Equipment Ltd.

Pidherney's Inc.

River Valley Contractors

SA Energy Group

Stan Poulsen Trucking Ltd.

Torrent Energy Services Ltd.

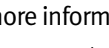
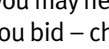
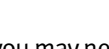
Tri-Gen Construction Ltd.

Tyalta Industries Inc.

Auction notes

- ▶ Every item is sold 'as is, where is'
- ▶ International and online bidders – you may need to place a refundable deposit before you bid – check the auction details on our website for more information

Transaction fee: (a) 10% on all Lots selling for \$5,000 or less, (b) 3.85% on all Lots selling for over \$5,000 up to \$33,500, with a minimum fee of \$500 per Lot or, (c) \$1,290 on all Lots selling for over \$33,500.



Visit rbauction.com for complete auction information



Full equipment listings, more photos and detailed equipment information



New additions to each auction – items added daily!



Deposit and payment information, including financing, wire transfer accounts and taxes



Full auction schedule, with times and lot numbers



Maps, hotels and other local services

Directions to auction site

From **Edmonton city limits**, approx 20 km South. From Edmonton Int'l Airport, approx 2 km East to Sparrow Drive, then 1 km North to auction site.

Parking attendants and shuttle buses will be provided for your convenience. For viewing purposes, on-site shuttle service will be provided from Apr 18 – 27. Designated non parking areas within the Nisku Park will carry fines.

More equipment added daily!



Get fast approvals, and the freedom and flexibility to buy what you need, when you need it.

Apply today at 1.855.331.7237 or

rbauction.com/PurchaseFlex



Unused – 2018 Caterpillar D6T LGP



Unused – 2018 Caterpillar D6T LGP



2016 Caterpillar D3K2 LGP



2014 & 2013 Caterpillar D3K2 LGP



1 of 2 – 2014 Caterpillar D6N LGP



2015 Caterpillar D5K2 LGP



2006 Caterpillar D7R LGP



1 of 2 – 2014, 2 of 3 – 2013 & 2012 Caterpillar D6N LGP



2012 Caterpillar D7E LGP



2012 Caterpillar D6T XW



2012 Komatsu D65PX-17



2008 Komatsu D275AX-5EO



2 – 2012 John Deere 650J LGP



2011, 2009 & 1 of 3 – Caterpillar D6T LGP



1 of 4 – Caterpillar D8T



1 of 2 – Caterpillar D7R XR Series II



1 of 2 – Caterpillar D7R LGP Series II



2013 John Deere 850J LGP



2013 John Deere 450J LGP



2009 John Deere 450J



1 of 2 – Unused – 2017 Volvo L30G



2016 Caterpillar 938K



2015 John Deere 524K



2013 Caterpillar 938K



2011 Komatsu WA500-6



2010 Volvo L70F



1 of 3 – 2008 Caterpillar 980H



2013 John Deere 870GP



2013 Caterpillar 160M AWD VHP Plus



3 – 2013 Volvo G946B AWD



2012 John Deere 772GP



2012 Caterpillar 14M VHP Plus



2012 Caterpillar 140M AWD VHP Plus



2008 John Deere 770D



2008 Caterpillar 160M VHP Plus



2008 Caterpillar 160M AWD VHP Plus



2017 Volvo EC160EL



2017 Caterpillar 330FL



2016 John Deere 2154D Roadbuilder



2016 Caterpillar 323FL



2015 Caterpillar 329FL



2 - 2015 Hitachi ZX250LC-5B



3 - 2015 Caterpillar 312E



2015 John Deere 290G LC



2 - 2014 Hitachi ZX180LC-5N



2014 Caterpillar 336EL



2014 & 2012 Caterpillar 324EL



2 – 2013 Caterpillar 349EL



2013 Komatsu PC290LC-10



2013 Hitachi ZX350LC-5N



1 of 3 – 2013 John Deere 470G LC



1 of 2 – 2012 Caterpillar 336EL



2012 Komatsu PC650LC-8E0



2012 John Deere 350G LC



2 – 2011 John Deere 350G LC



2010 John Deere 850D LC VG



2009 Komatsu PC400LC-8



2008 Hitachi ZX200LC-3



1998 Komatsu PC750LC-6



Unused – 2017 Kubota U48-4



1 of 2 – Unused – 2017 Hitachi ZX55U-5A



1 of 2 – 2017 Caterpillar 308E2CR



2015 Caterpillar 308E2CR



2014 Caterpillar 308E2CR



2014 Caterpillar 308E2CR



1 of 2 – 2017 Caterpillar 730C2 6x6



2017 Caterpillar 745C 6x6



2017 Caterpillar 745 6x6



1 of 2 – 2015 Volvo A25G 6x6



3 – 2013 Volvo A40F 6x6



2 of 4 – 2014, 1 of 3 – 2012 & 2011 Caterpillar 730EJ Ejector 6x6



1 of 3 – 2013 Caterpillar 725C 6x6



2 – 2011 Caterpillar 730 6x6



2 – 2008 Volvo A30E 6x6



2010 Komatsu HM400-2 Galeo 6x6



2016 Caterpillar 420F2 IT LRC 4x4x4



2012 John Deere 410K



2011 John Deere 310SJ



2008 John Deere 310SJ 4x4



1998 Liebherr LTM1160-2 200 Ton 10x10x6



1 of 2 – Terex RT665 65 Ton



2012 Broderson IC2503C 18 Ton 4x4x4



1980 IMT 1800-Cat 12600 Ton



1981 Caterpillar 815B



2 – Caterpillar 815F



2015 & 2 – 2014 Caterpillar CP56B



2007 Dynapac CA362PD



2 – Unused – 2018 Dynapac CA3500D



2016 Caterpillar CS54B



2003 Wirtgen WR2500S



Unused – 2017 Dynapac CC800



2010 Dynapac CC1300C 4 Wheel Combination



2009 Dynapac CC142 14 Series



2016 John Deere 748L Grapple



2012 & 2011 John Deere 753J



2016 John Deere 2154D



2011 Vermeer T855II



2004 Ditch Witch RT70



1995 Mormak 2854



2012 Elrus 53 Ft w/Cat power



McCloskey Bros R105



2012 Superior 36X125PC



1 of 2 - Unused - 2018 Powerstak RS8532



2012 Elrus M5918 30 CY Surge Bin



2012 Elrus-Sandvik CH430 Cone



Telsmith C48DE



2012 Superior 36X60PRSC

Oilfield Hauling



2015 Kenworth T800 Winch



2015 Kenworth C500 Winch



2014 & 2013 Kenworth C500, 2014 Western Star 4900SB & 2012 Kenworth T800 Winch



2014 & 2013 Western Star 4900SB Winch



2013 & 2012 Kenworth T800 Winch



2009 Western Star 4900SA, 2007 Kenworth C500B, 2 - Kenworth T800B & Kenworth T800 Winch



2012 Kenworth T800 Winch



2007 Kenworth C500B Winch



2006 Kenworth T800 Winch



2014 Western Star 6900TS



1998 Foremost Commander C 6x6



2014 Kenworth C500



2013 Western Star 6900TS



2013 Kenworth C500



2012 Kenworth C500B



2007 Western Star 8x8



2012 Kenworth C550



2003 Kenworth C500



1999 Kenworth C550B



2004 Kenworth C500B



2015 Kenworth W900 Heavy Haul



1 of 2 – 2016 Kenworth W900 Heavy Haul



2015 Kenworth W900 Heavy Haul



2016 Kenworth W900 Heavy Haul



2016 Kenworth W900 Heavy Haul



2015 Kenworth W900 Heavy Haul



2015 Kenworth T800 Heavy Haul



2014 Western Star 4900SA Heavy Haul



2 – 2015 Peterbilt 367, 2014 Western Star 4900SA & 2009 Kenworth T800 Heavy Haul



2014 Peterbilt 367 Heavy Haul



2014 Peterbilt 367 Heavy Haul



2014 Kenworth T800 Heavy Haul



2008 Kenworth T800 Heavy Haul



2013 Peterbilt 367



1 of 3 – 2014 Kenworth T800



2016 Peterbilt 389



2014 Kenworth T660



2013 Kenworth T800



4 of 5 – 2014 Western Star 4700SF, 3 – 2015 & 2014 Midland MG25XL2000 25 Ft



2 – Peterbilt 378, Freightliner FLD120, 2013, 2009 & 2006 Castleton



2 – 2016 Kenworth T800



2 – 2015 Western Star 4700SB



1 of 7 – 2013 Kenworth T800



2010 Kenworth T800



2006 Peterbilt 379



1999 Kenworth W900



2012 Peterbilt 388



2007 Kenworth T800B



9 of 10 – International 7500 & 7400



4 of 11 – International 7400



2 – 2013 Peterbilt 388



2 of 3 – 2012 Peterbilt 367 & 2 of 4 -- 2012 Capital 27 Ft



Peterbilt 378, Peterbilt 379 & 2 – Trojan 26 Ft



2011 Freightliner Coronado SD122 & 2008 Trojan 26 Ft



2009 Peterbilt 389 & 2006 Arnes 36 Ft



2008 Kenworth T800



2007 Freightliner Durastar 4300 6900 Litre



2007 Kenworth T800



2013 Peterbilt 367 16000 Litre Potable



2013 Freightliner Coronado SD122



2012 Peterbilt 367 20000 Litre Potable Water



2012 Kenworth T800 18510 Litre



2014 Mack Granite w/Hiab 200-3



2012 & 2011 Kenworth C500 w/National NBT45TM



3 - 2012 Western Star 4900SA w/Weldco WHL45TC77



2003 Kenworth W900B w/National 675D



2014 Freightliner M2106 w/Altec DM45B



2011 International 7600SBA w/Altec D3060B



2009 International 4300SBA w/Altec DM47B



2008 Kenworth T300 Hydro Vac



2005 Western Star 4900



1997 International 2654 w/Etnyre Black Topper 2000



2007 International Durastar 4300



2014 Ford F550 XLT 4x4



Bid on one amazing car, support two worthy causes!



2012 4 Star 40 Ft 3 Horse



2017 Ty-Crop SF53

**Completely restored
1970 Chevrolet El Camino SS selling.**



2005 Peerless 50 Ton & 2005 Peerless SAT10BT1ASS



2012 Scheltema 60 Ton 2+3+1

This classic, completely restored 1970 Chevrolet El Camino SS will be sold to the highest bidder at our Edmonton, AB auction Apr 24-27, with all proceeds going to two worthy charities: the Canadian Diabetes Association and the Alberta Cancer Foundation.



2013 Transcraft 51-71 Ft Trombone – Selling by photo



2014 Manac 53 Ft Trombone – Selling by photo

1970 Chevrolet El Camino SS

- ▶ 427 cu. in. V8
- ▶ Pro Charger P-1SC-1 supercharger
- ▶ Borg Warner Super T-10 4-speed transmission
- ▶ 12 bolt Chevrolet 3:73 rears

Don't miss this opportunity! Inspect in person, then register and bid in person or online on this unique piece of motoring history.



2012 Etnyre HFR55TL3 70 Ton



2007 Rayfab 60 Ton - Selling by photo

Visit rbauction.com/Edmonton



2006 Lidell M80 80 Ton 3+3+3



2002 Knight 85 Ton 13 Axle





2015 Doepker 55 Ton 53 Ft 24 Wheel



2012 Arnes 15 Ft Lead & 2012 Arnes



2008 Midland MG30TW2500 & 2008 Midland MG35SL3000



2015 Summit 24 Ft Tilt - Selling by photo



1 of 2 - Unused - 2017 Dragon 11100 Gallon



2014 Lazer Inox 32000 Litre



2013 Dragon Products 42000 Litre



2012 Tremcar 32000 Litre



2013 & 2012 Morooka MST2200VD



3 of 6 - Unused - 2018 Genie GTH2506 4x4x4



Unused - 2018 Manitou MT932 Easy 4x4x4



2007 Enduramax 24 Trans 24 Ft



2005 John Deere 7820



2009 Lode King Prestige Super B-Train



2008 Doepker Super B-Train



1970 Chevrolet El Camino SS – Proceeds to benefit Diabetes Canada & the Alberta Cancer Foundation



1957 Buick Model 70 Riviera



1930 Ford Touring Coup



1964 Plymouth Valiant Signet



1962 Chrysler Imperial



1970 Chevrolet C10



2008 Audi A4



1990 Chevrolet 1500 4x4

Oil & Gas Equipment Selling On Day 4 (Apr 27)

Ritchie Bros. welcomes Kruse Energy Auctioneers to Edmonton!



2013 S&S Coil Tubing Reel Trailer & 2014 Peerless 45 Ton Jeep



2 of 4 – 2007 Kenworth T800 Coil Tubing & 2 of 4 - 2012 Pratt Twin Pump



2 – NOV Drill Rig Umbilical Cord Systems



2 – NOV Drill Rig Umbilical Cord Systems



2 – NOV Drill Rig Umbilical Cord Systems



2 – 2014 NOV UFD House

If you need to buy oil & gas equipment, don't miss your opportunity to inspect and bid on a wide selection selling at our Edmonton auction – including items from Shell. Plus this year, we've teamed up with **Kruse Energy** – proven leaders in selling equipment use in the energy industry.



2014 NOV Power Distribution House



2 - 2014 NOV Amphion Control Dog House



2 - 2015 NOV Top Drives



Iron Derrickman Pipe Handler



2 - 2014 NOV Pipe Handling Boom Trailer



Pipe Tub w/Crane



2 - 2014 NOV D700AC Drawworks



3 - 2014 NOV Xinlong Mud Tank



Lubricators



Forum Triple Blowout Preventers



2014 Control Tech Well Controls



23 - NOV Suitcases



2014 SJ Petro SXJ250Z Work Over Rig



2005 Kenworth T800B Coil Tubing



2003 Kenworth T800 Coil Tubing



2004 Western Star Coil Tubing



2013 Kenworth T800 10355 Litre Hot Oilier



2007 Kenworth T800 Pressure



2005 Peterbilt 357 Flushby



Watson 3100CM Rig



Lantec BOP Handler

Inspect and bid on:

- 2- 2014 Forum Tandem Stripper 4 1/16" x 1 1/2" 10,000 psi
- 5- Hydra Rig 2" Injectors
- 3- 2012 T/A Tool Trailer w/ Misc. Tools
- 2- Coiled Tubing Tool Boxes, (1) 2 Tank Stainless Steel Additive Skid, (3) Stainless Steel Additive Totes
- 21- Crates of Coiled Tubing Surplus
- 12- H/R Injector Gripper Kits x 10,000 psi
- BOP Test Chamber
- Multiple Coil Tubing Reels
- Multiple Drill Pipe Slips, Drill Collar Slips, Elevator Bails
- 6,536 Ft (152 Jts) 5", Rng 3, 19.50# Drill Pipe w/4-1/2" IF Conn, 6-1/2" OD Avg Box, HB
- 8- 8-1/2" Slick Drill Collars w/ 6-5/8" Conn
- 16- 6-1/2" Slick Drill Collars w/ 4-1/2" FH Conn
- 2- NOV 12'8"H x 3'Dia Separator, Mtd in 7'5"H x 4'7"W x 5'7"L Catch Tank w/Skidded Stand
- 3- Wireline Units
- 3-Phase Corning Cable System Cable Spool, 600 V Compatible
- 11" 3000# Drilling Spool Crossover to 3000# Wellhead w/(2) 3-1/8" 3000# EFO
- Mud Pump Center Skid w/ Discharge Hoses, Air & Water Lines, RUFFNECK Heaters
- Large QTY of Handrails
- 3- VFD A/C Units
- Qty of Rig Ramps
- Reel Drive Motors
- Heat Exchanger
- QTY Single Drum Drawworks
- Triplex Mud Pumps
- QTY of Triplex Pump Parts, Liners, Cross Heads, Module
- Accumulator Building
- DEMR 150 Mobile Mud Cleaning System
- Flare Stacks
- Shale Haul Off Bins
- Catwalk
- QTY of Rig Mats
- Finger Board



2012 Bobcat S850 2 Spd



2009 Bobcat S250 2 Spd



2015 Caterpillar 259D



2012 Bobcat T770



2008 Dynamax Grand Sport Utility 45 Ft



2007 Newmar Kountry Star Class A



Cadillac Escalade Golf



2014, 5 – 2013, 2012 & 2011 GMC 2500HD SLE 4x4



2000 Bancarz Thumper 182 (Cessna Clone) – Selling by photo



1969 Beechcraft Duke Beech 60 – Selling by photo



2011 Land Tamer RAV Ground Support

Equipment listings

PIPELAYERS: Case 570MXT • Caterpillar 561B • Caterpillar D8K • John Deere 650G

84 CRAWLER TRACTORS: 2009 Caterpillar D6T • 2009 John Deere 450J • 2011 Caterpillar D6T • 2011 John Deere 650J • 2011 Komatsu D65WX-17 • 2- 2012 Caterpillar D6N • 4- 2012 Caterpillar D6T • 2012 Caterpillar D7E • 2012 John Deere 650J • 2013 Caterpillar D3K2 • 3- 2013 Caterpillar D6N • 2- 2013 Caterpillar D6T • 2013 John Deere 450J • 2013 John Deere 850J • 2014 Caterpillar D3K2 • 2- 2014 Caterpillar D6N • 4- 2014 Caterpillar D6T • 2014 John Deere 850K • 2015 Caterpillar D5K2 • 2016 Caterpillar D3K2 • 3- 2018 Caterpillar D6T • Caterpillar D4B • 2- Caterpillar D5H • Caterpillar D6H • Caterpillar D6M • 9- Caterpillar D6N • 6- Caterpillar D6R • 4- Caterpillar D6T • Caterpillar D7H • 6- Caterpillar D7R • 2- Caterpillar D8N • 3- Caterpillar D8R • 5- Caterpillar D8T • Caterpillar D9N • John Deere 450J • John Deere 750C • 2- John Deere 750J • John Deere 850J • Komatsu D3PX21 • Komatsu D155AX-6 • Komatsu D275AX-5E0

47 WHEEL LOADERS: 2009 John Deere 524K • 2010 Volvo L70F • 2011 John Deere 644K • 2011 Komatsu WA250PZ-6 • 2011 Komatsu WA320-6 • 2011 Komatsu WA500-6 • 2012 John Deere 624K • 2- 2012 Komatsu WA250PZ-6 • 2013 Caterpillar 938K • 2013 Hyundai HL757TM-9 • 2- 2014 John Deere 524K • 2015 John Deere 524K • 2016 Caterpillar 938K • 2- 2017 Volvo L30G • Case 721D • 3- Caterpillar 930G • Caterpillar 950B • Caterpillar 950H • Caterpillar 966C • Caterpillar 966F • Caterpillar 966G • Caterpillar 980C • Caterpillar 980G • 3- Caterpillar 980H • Caterpillar 988H • 2- Caterpillar IT28G • Dresser 550 • Fiatallis FR10B • 2- Ford A66 • 2- John Deere 544J • John Deere 624H • John Deere 644H • John Deere 644J • Komatsu WA400 • 2- Volvo L70C • Volvo L150E

CRAWLER LOADERS: Caterpillar 953C • Caterpillar 963B • Caterpillar 963C • Caterpillar 977K • 2- John Deere 755C

34 SKID STEER LOADERS: 2009 Bobcat S205 • 2009 Bobcat S250 • 2010 Bobcat S250 • 2010 Caterpillar 256C • 2010 John Deere 320D • 2011 Bobcat S750 • 2011 John Deere 326D • 2011 John Deere 332D • 3- 2012 Bobcat S185 • 2012 Bobcat S750 • 2012 Bobcat S850 • 2012 Case SR200 • 2013 Bobcat S590 • 2013 Jcb 260 ECO • 2014 Bobcat S590 • 2016 John Deere 318G • Bobcat S205 • Bobcat S250 • Bobcat S770 • 2- Case 430 • Caterpillar 226 • Caterpillar 232B • Caterpillar 236B • Caterpillar 246 • Caterpillar 246B • 3- Caterpillar 256C • Caterpillar 262 • John Deere 332 • Thomas 9002-183

23 MULTI TERRAIN LOADERS: 2011 Bobcat T320 • 2011 Bobcat T770 • 2012 Bobcat T190 • 2012 Bobcat T770 • 2- 2012 John Deere 323D • 2012 John Deere 329D • 2012 John Deere 333D • 2013 Bobcat T590 • 2013 Bobcat T650 • 3- 2013 Caterpillar 299D • 2- 2013 John Deere 323D • 2013 John Deere 333D • 2015 Caterpillar 259D • 2- 2015 Caterpillar 299D2 • 2016 John Deere 317G • Bobcat T250 • Bobcat T300 • Case 450CT

29 MOTOR GRADERS: 2009 Caterpillar 140M • 2009 Caterpillar 160M • 2009 Volvo G976 • 2010 Caterpillar 140M • 2010 Volvo G960 • 2012 Caterpillar 14M • 2012 Caterpillar 140M • 2012 John Deere 770G • 2012 John Deere 772GP • 2013 Caterpillar 160M • 2013 John Deere 870GP • 3- 2013 Volvo G946B • 2014 Caterpillar 14M • Caterpillar 14G • 2- Caterpillar 14H • Caterpillar 14M • 2- Caterpillar 120G • Caterpillar 140H • 2- Caterpillar 160M • Champion 600 Series • Champion 680 • Champion 730A • John Deere 770D • Volvo G740

MOTOR SCRAPERS: 2- Caterpillar 621G • Caterpillar 627 • Caterpillar 627B • 2- Caterpillar 627G • Terex TS14G

122 HYDRAULIC EXCAVATORS - CRAWLER: 2009 Komatsu PC270LC-8 • 2009 Komatsu PC400LC-8 • 2010 Hitachi ZX225USRLC-3 • 2- 2010 John Deere 350D • 2010 John Deere 850D • 2010 Komatsu PC270LC-8 • 2011 Caterpillar 336EL • 2011 Hitachi ZX200LC-3 • 2011 Hitachi ZX210LC-3 • 2- 2011 John Deere 240D • 2011 John Deere 290G • 2011 John Deere 350D • 2- 2011 John Deere 350G • 2011 John Deere 450D • 2011 John Deere 450D LC • 2011 Komatsu PC210LC-8 • 2012 Caterpillar 320DL • 2012 Caterpillar 324EL • 4- 2012 Caterpillar 336EL • 2- 2012 Hitachi ZX225USLC-3 • 2- 2012 John Deere 250G • 2- 2012 John Deere 290G • 2012 John Deere 350G • 2013 Caterpillar 329EL • 3- 2013 Caterpillar 349EL • 2- 2013 Hitachi ZX225USLC-3 • 2013 Hitachi ZX250LC-5N • 2- 2013 Hitachi ZX290LC-5N • 2013 Hitachi ZX350LC-5N • 2013 John Deere 180G • 3- 2013 John Deere 470G • 2013 John Deere 2454D • 2013 Komatsu PC290LC-10 • 2013 Komatsu PC650LC-8 • 2014 Caterpillar 312E • 2014 Caterpillar 320EL • 2014 Caterpillar 324EL • 2014 Caterpillar 329EL • 2014 Caterpillar 336EL • 2014 Hitachi ZX135US-5 • 2014 Hitachi ZX210LC-5 • 2014 Hitachi ZX250LC-5B • 2014 John Deere 670G • 2014 Komatsu PC290LC-10 • 2- 2015 Caterpillar 312E • 2015 Caterpillar 329FL • 2- 2015 Hitachi ZX250LC-5B • 2- 2015 John Deere 250G • 2015 John Deere 290G • 2016 Caterpillar 323FL • 2016 John Deere 2154D • 2017 Caterpillar 330FL • 2017 Volvo EC160EL • Case CX240B • Caterpillar 235C • Caterpillar 325DL • Caterpillar 330BL • Caterpillar 330C • Caterpillar 330C FM • 3- Caterpillar 330CL • 2- Caterpillar 345BL • 2- Caterpillar 345CL • Caterpillar 385CL • Hitachi EX230LC-5 • 2- Hitachi ZX200LC • Hitachi ZX200LC-3 • 3- Hitachi ZX270LC-3 • 2- Hitachi ZX350LC-3 • Hitachi ZX450LC-3 • John Deere 135C • John Deere 160 • John Deere 200C • 3- John Deere 200D • John Deere 225C • John Deere 225D • 8- John Deere 350D • 2- John Deere 450D • John Deere 750 • John Deere 800C • Kobelco SK290LC • Komatsu PC270LC-6 • Komatsu PC300LC-7 • Komatsu PC300LC-7E0 • Komatsu PC750LC-6 • Link-belt 240LX • Volvo EC240B

16 HYDRAULIC EXCAVATORS - MIDI: 2011 Komatsu PC55MR-3 • 2012 Komatsu PC88MR-8 • 2013 Caterpillar 305.5ECR • 2013 Kubota U55-4 • 2- 2014 Caterpillar 308E2CR • 2015 Caterpillar 308E2CR • 2015 Hitachi ZX85USB-5 • 2017 Caterpillar 305E2CR • 2017 Caterpillar 308E2CR • 2- 2017 Hitachi ZX55U-5A • 2017 Kubota U48-4 • 2018 Caterpillar 308E2CR • Caterpillar 307B • John Deere 85D

HYDRAULIC EXCAVATORS - MINI: 2011 Bobcat E35

66 ARTICULATED DUMP TRUCKS: 2- 2010 Volvo A40E • 2- 2011 Caterpillar 730 • 2- 2011 Caterpillar 730EJ • 2- 2011 John Deere 400D SERIES II • 3- 2012 Caterpillar 730EJ • 2012 John Deere 400D • 3- 2013 Caterpillar 725 • 4- 2013 Volvo A40F • 4- 2014 Caterpillar 730EJ • 2- 2014 Volvo A40G • 2- 2015 Volvo A25G • 2- 2017 Caterpillar 730C2 • 2017 Caterpillar 745 • 2017 Caterpillar 745C • Caterpillar 730 • Caterpillar 735 • 6- Caterpillar 740 • Caterpillar 740EJ • 4- John Deere 300D • 2- John Deere 350D • John Deere 400D • 2- Komatsu HM400-2 • 2- Terex TA30 • 2- Volvo A25C • 8- Volvo A30D • 3- Volvo A30E • Volvo A35D • Volvo A40E

CABLE PLOWS: 2011 John Deere 850J • Bron HSII • John Deere 850C • TRENCHERS: 2011 Vermeer T855III • 2012 Ditch Witch RT12 • 2- Boxer 118 • Case 660 • Ditch Witch RT70 • Vermeer RTX1250 • Vermeer V8550

DRILLS - DIRECTIONAL DRILLS: 2010 Ditch Witch JT3020 • 2013 Vermeer D300X500 • 2014 Vermeer D20X22 • Barbco BD30

14 LOADER BACKHOES: 2009 Caterpillar 420E • 2011 John Deere 310SJ • 2012 John Deere 410K • 2016 Caterpillar 420F2 IT LRC • 3- Case 580SM • Case 590SM • 2- Caterpillar 430D • Caterpillar 446B • Jcb 3CX • John Deere 310SG • John Deere 310SJ

CRANES - ALL TERRAIN: Krupp KMK4070

CRANES - ROUGH TERRAIN: 2- Terex RT665

CRANES - HYDRAULIC TRUCK: Liebherr LTM1160/2 • Link-belt HTC840

CRANES - CONVENTIONAL TRUCK: American 599T • American 7530 • CRANES - OTHER: 2012 Broderson IC2503C • Caterpillar 814 • Imt 1800-CAT • Shuttlelift 7750

COMPACTION - COMPACTORS: Bomag K350 • Case W1102 • 2- Caterpillar 815B • 2- Caterpillar 815F

15 COMPACTION - VIBRATORY PADFOOT COMPACTORS: 2- 2014 Caterpillar CP56B • 2015 Caterpillar CP56B • Bomag BW213PDH-3 • Caterpillar CP563E • Dynapac CA121PD • Dynapac CA151PD • Dynapac CA152PD • Dynapac CA252PD • Dynapac CA362PD • Ingersoll-rand SD45FTF • Ingersoll-rand SD110F • Superpac 540PC • Tampo RP28D • Vibromax 1103PD

COMPACTION - VIBRATORY ROLLERS: 2011 Volvo SD116DX • 2013 Hamm 3412 HT • 2016 Caterpillar CS54B • 2- 2018 Dynapac CA3500D • Bomag BW211D-40 • Caterpillar CS563E • Dynapac • Tampo RS28D • Volvo SD116DX

18 TANDEM ROLLERS: 2009 Dynapac CC142 • 2010 Dynapac CC142 • 2010 Dynapac CC142C • 4- 2014 Caterpillar CB32 • 2015 Caterpillar CB24B • 2- 2016 Caterpillar CB2.7 • 2017 Dynapac CC800 • 2017 Hamm HD12VV • Bomag BW90AD-2 • 2- Dynapac CC722 • Ferguson 43164 • 2- Ingersoll-rand DD130 •

COMPACTION - ROLLERS: 2010 Dynapac CC1300C • Bros SP730 • Bros SP3000 • Bros SP10000 • Dynapac • Ingersoll-rand PT240R • Sakai TS200

46 COMPACTION - WALK BEHIND: 2009 Bomag BW75-H •

2011 Bomag BMP8500 • 2011 Bomag BW75-H • 2014 Mikasa MVH206GH • 2- • Bomag • Bomag BPR30 • Bomag BW75-H • 2- Loncin MS10 • 4- Loncin MS20 • 6- Loncin MS100 • 4- Loncin MS120 • 4- Loncin MS160 • 4- Loncin MS330E • 2- Masalta MS100 • 6- Wacker • 2- Wacker DPU6555HE • Wacker RD7H • Wacker RTSC2 • Wacker WM80

COMPACTION - TOW BEHIND: Bomag

ASPHALT - PAVING EQUIPMENT: Lee-boy L8816

ASPHALT - DISTRIBUTOR TRUCKS: International 2574 • International 2654

ASPHALT - PAVEMENT PROFILERS: Wirtgen WR2500S

ASPHALT - MISCELLANEOUS: Barco Rayco MINI 100

CONCRETE - PAVING EQUIPMENT: Power Curbers 5500

LOGGING - FELLER BUNCHERS: 2011 John Deere 753J • 2012 John Deere 753JD • 2- 2016 John Deere 853M • Madill 1200 • Timberjack 618

LOGGING - PROCESSORS: 2013 John Deere 2154D • 2015 John Deere 2154D

LOGGING - SKIDDERS: 2012 John Deere 748H • 2016 John Deere 748L • Caterpillar 508

ENVIRONMENTAL EQUIPMENT: Bluesky • 2- Cmi Hurricane C250 • Lamtrac 8290 •

AGGREGATE - JAW CRUSHERS: 2012 Terex Finlay J1175 • Mormak 2854

AGGREGATE - SCREEN PLANTS: 2012 Terex Finlay 883 • Mccloskey Bros 621RE • Powerscreen 615 • Royer 466

AGGREGATE - FEEDERS: 2018 Suihe • 2018 Suihe GS-15 • 2- 2018 Suihe GS-18

18 AGGREGATE - CONVEYORS: 8- 2018 Better BE3660C • 4- 2018 Hill Tops AE3660 • 2- 2018 Powerstak RS8532 • 4- 2018 Super

AGGREGATE - MISCELLANEOUS: 3- 2018 Paladin

24 WINCH TRACTORS: 2009 Kenworth T800 • 2011 Freightliner • 2- 2011 Western Star 4900SA • 2- 2012 Kenworth T800 • 2- 2013 Kenworth T800 • 2015 Kenworth T800 • Freightliner FLD120SD • International 5900I • Kenworth C500 • 2- Kenworth C500B • 5- Kenworth T800 • Kenworth T800B • 4- Peterbilt 378

BED & RIG-UP TRUCKS: 2012 Kenworth C500B • 2013 Kenworth C500 • Kenworth C500B • 2- Kenworth C550B • Western Star

20 HEAVY HAUL TRUCK: 2011 Western Star 4900EX • 2012 Kenworth T800 • 2012 Peterbilt 367 • 2013 Freightliner • 2013 Peterbilt 367 • 4- 2014 Kenworth T800 • 2- 2014 Peterbilt 367 • 2014 Western Star 4900SA • 2015 Kenworth T800 • 3- 2015 Kenworth W900 • 2- 2016 Kenworth W900 • 2016 Peterbilt 367 • Peterbilt 378

TRUCK TRACTORS (TRI/A AND GREATER): 2013 Peterbilt 367 • 2- 2014 Volvo VNL86T300 • Kenworth T800B • Western Star 6900XD

75 TRUCK TRACTORS (T/A): 2009 Peterbilt 389 • 2- 2010 Freightliner CASCADIA 125 • 3- 2010 Kenworth T800 • 2010 Mack CXU613 • 2010 Western Star 4900FA • 2011 Kenworth T800 • 3- 2012 International Prostar Plus • 2012 Kenworth T800 • 2012 Peterbilt 367 • 2013 Caterpillar CT660 • 2013 Freightliner CA125SLP • 2013 International Prostar Plus • 2- 2013 Kenworth T660 • 10- 2013 Kenworth T800 • 2013 Mack CHU613 • 2013 Mack CXU613 • 2014 Kenworth T660 • 2014 Kenworth W900 • 2- 2014 Mack CXU613 • 3- 2014 Peterbilt 386 • 5- 2014 Western Star 4700SF • 2016 Peterbilt 389 • • Freightliner FL80 • Freightliner FLD120 • Freightliner FLD120SD • 2- International 9400I • Kenworth T600 • 5- Kenworth T800 • 2- Kenworth T800B • Mack CH613 • Mack CHN613 • Peterbilt 367 • 5- Peterbilt 378 • Peterbilt 379 • Peterbilt 379L • Peterbilt 386 • Sterling L9500 • Volvo WG64T • 4- Western Star 4900SA

TRUCK TRACTORS (S/A): 2012 Ottawa YT • Kenworth T300

11 DUMP TRUCKS (TRI/A): 2- 2011 Kenworth T800 • 2013 Peterbilt 388 • 2- Kenworth T800B • 2- Peterbilt 367 • 3- Peterbilt 378 • Western Star 4900SA

59 DUMP TRUCKS (T/A): 2009 Freightliner M2112 • 2009 Peterbilt 367 • 2009 Peterbilt 389 • 2010 Freightliner M2112 • 2011 Freightliner Coronado • 2011 Freightliner Coronado SD122 • 2011 Western Star 4900FA • 2012 Peterbilt 365 • 3- 2012 Peterbilt 367 • 2013 Peterbilt 348 • 2- 2013 Peterbilt 388 • 2014 Mack GU713 • 2014 Peterbilt 348 • Freightliner FL80 • 2- Freightliner FLD120SD • 2- Freightliner M2106 • 2- Freightliner M2112 • 16- International 7400 • 2- International 9400I • 4- Kenworth T800 • 3- Kenworth T800B • Mack CH600 • Mack CV713 • Peterbilt 378 • Peterbilt 379 • Sterling • Sterling Acterra • Sterling L7500 • Sterling LT7500 • 2- Sterling LT9500 • Western Star 4900

DUMP TRUCKS (S/A): Chevrolet C6500 • Freightliner FL70 • Sterling ACTERRA

MIXER TRUCKS: 2- Western Star • Western Star 4854F • Western Star 4900FA

26 WATER TRUCKS: 2011 Freightliner M2 112 • 2- 2011 Freightliner M2112 • 2013 Freightliner 114SD • 2013 Peterbilt 367 • Ford F-650 • 2- Freightliner FL70 • Freightliner M2112 • GMC C7500 • International 2554 • International 2574 • International 4200 • International 4900 • International 9300 • 2- Kenworth T800 • Kenworth T800B • Mack CS200 • Mack CX613 • Mack RD6885 • 2- Peterbilt 378 • Sterling Acterra • Sterling LT9500 • Volvo WG64T

TANK TRUCKS: 3- 2012 Kenworth T800 • 2012 Peterbilt 367 • 2013 Freightliner Coronado SD122 • 2013 Kenworth T800 • Ford 8000 • Ford Aeromax L9000 • Ford F550

21 BOOM TRUCKS: 2009 Ford F550 • 3- 2012 Western Star 4900SA • 2- 2012 Western Star C550 • 2014 Mack Granite • Ford F550 • Freightliner M2106 • 2- GMC C5500 • International 4300 • International 7400 • Kenworth C500 • Kenworth T800 • 2- Kenworth W900B • Mack CH613 • Volvo VHD • 2- Western Star 4900SA •

DIGGER DERRICK TRUCKS: 2009 International 4300 SBA • 2011 International 7600 SBA • 2014 Freightliner M2106 • 3- Freightliner FL80 • GMC C7500 • International 4300 • International 4700

BUCKET TRUCKS: Ford F550 • International 4300 • International 4900

STONE SLINGER TRUCKS: Sterling LT8500 • Western Star 4900SA

22 VACUUM TRUCKS: 2009 Kenworth T800 • 2011 Freightliner M2 • 2011 Freightliner M2 112 • 2- 2011 Kenworth T800 • 2- 2012 Freightliner M2112 • 2013 Western Star 4900SA • Ford F800 • Freightliner FLD11264ST • Freightliner M2 • International 2554 • International 5900I • International PAYSTAR 5000 • Kenworth T300 • 2- Kenworth T800 • Mack 700 • Peterbilt 335 • Western Star 4900 • 2- Western Star 4900SA

FUEL & LUBE TRUCKS: 2- Ford F650 • International Durastar 4300 • Kenworth T300 • Kenworth T800B • Mack CS300P • Peterbilt 330

21 MECHANICS TRUCKS: 2009 Dodge 5500 • 2009 International 4300 • 2012 Ford F350 • 9- 2012 Ford F550 • 2013 Ford F550 • 2- 2014 Ford F550 • 3- Ford F550 • Ford F550 XLT • International 4300 • Mack RWL766LST

REEFER TRUCKS: 2009 Freightliner M2106 • Freightliner FL70 • GMC W4500 • International 4300 • International 4900

UTILITY TRUCKS: 2011 Ford F750 • Chevrolet 3500 • Ford E350 • Ford F550 • Ford F750 • International 4300 • International 8100 • International Durastar 4300

ROLLBACK TRUCKS: Freightliner FL60 • Freightliner FL70 • Freightliner M2106 • Peterbilt 335

15 VAN TRUCKS: 2009 Kenworth T370 • 2010 Mercedes-benz SPRINTER 2500 • 2010 Mercedes-benz Sprinter 3500 • 2011 Mercedes-benz Sprinter 2500 • 2012 Chevrolet Express 2500 • 2- 2013 Chevrolet Express 2500 • 2013 GMC 2500 • 2- Dodge 3500 • GMC Topkick • International 4300 • International 4700 • International 8100 • Peterbilt 330

CONCRETE PUMP TRUCKS: International CF600

SANITATION TRUCKS: Ford F450 • International FL80

TOW TRUCKS: 2009 Ford F550

ROLLOFF TRUCKS: Freightliner FLD11264ST • 2- Kenworth T800

GRAIN, SILAGE & PRODUCE TRUCKS: Freightliner FLD120

CAB & CHASSIS TRUCKS: 2013 Ram 5500HD • International 7400 • Kenworth T800 • Kenworth T800B • 2- Peterbilt 378 • 2- Sterling LT9513 • Western Star 4900

46 FLATBED TRUCKS: 2011 Dodge 3500HD • 3- 2011 Dodge 5500HD • 2011 Ford F350 • 2011 Ford F550 • 2011 GMC 3500HD • 7- 2012 Ford F350 • 2012 Ford F550 • 2012 GMC 3500HD • 2012 International 4400 • 2013 Ford F350 • 3- 2013 GMC 3500HD • 2014 Ford F350 • 2- 2014 Ford F550 • 2- 2015 Ford F350 • 2015 Ford F550 • Chevrolet 3500 • Dodge 3500 • 2- Ford F350 •

3- Ford F550 • Freightliner • Freightliner FLD120 • Freightliner M2106 • GMC C5500 • International 4300 • International 4400 • International 4900 • International F9370 • 2- Kenworth T800 • Mack R688ST • Mitsubishi FE145

MISCELLANEOUS TRUCKS: 2013 Ford F550 • Ford LT9000 • International 9900i • Kenworth C500 • 3- Kenworth T800

49 LOWBOYS: 2009 Doepker • 2010 Stellar • 2- 2011 Aspen • 2012 Bws • 2012 Doepker • 2012 Etnyre HFR55TL3 • 2012 Muv-all • 2012 Peerless LB65-SDLROW-24A • 2012 Scheltema 60 TON • 2013 Doepker • 2013 Doonan • 2- 2014 Doepker • 2014 K-line KLH307 • 2014 Peerless • 2014 Viking VFD46R16F35T • 2015 Gerrys KSN105 • 2018 Gerrys KLH603 • Altek • Arnes • Aspen • Aspen LB50 • Columbia • Cozad • Flagliner • 4- Gerrys • Heartland • J C Trailer • Jctr • K-line • Kalyn/siebert 30T2ADD • Knight • Liddell M80 • Paron • 4- Peerless • Peerless LB0-32B • Peerless LB60 • Peerless LB60-SDBTR N-16 • Rayfab • 2- Scona • Trail King

17 STEP DECK TRAILERS: 2009 Load Max • 2009 Manac • 2012 Manac • 2013 Transcraft • 2014 Manac 14352A00 • 2015 Fontaine • 2015 Manac 14453A040 • Bws E22 LOAD • Felling • K-line • Kalyn • Ledwell • Ledwell LW48HTHT2 • Lornes • 2- Manac • Wilson CFD900

38 JEEPS, BOOSTERS & RIGGING: 2009 Peerless TAT202ASS • 2009 Scona 16LRJ • 2011 Arnes • 2012 • 2012 Aspen • 2012 Scheltema • 2013 • 2013 Peerless • 2014 • 2014 K-line KBA202 • 2014 K-line KJP203 • 2014 Peerless • 2015 Stellar • 2- 2016 Aspen • 2018 Gerrys KBA201 • 2018 Gerrys KJP601 • 2- • Advance • Alloy • Aspen • Cozad • Custombuilt • Diamond Back • Edmonton Trailer • Gerrys KLPB1C • 3- K-line • K-line KLM205 • Knight KB723 • Knight KB741 • Liddell • 3- Peerless • Peerless SAT10BT1ASS • Peerless TAT202ASS • Rsi • Scheltema • 2- Scona • Silver Eagle • 2- Stewart

12 SUPER B-TRAIN HIBOYS: 2012 Load King • 2012 Manac • 2015 Manac • 2016 Manac • Arnes • 7- Doepker • Lode King • Lode King 28 FT • Manac • Road King • 36 HIBOYS: 2012 Fontaine • 2012 Lode King • 2013 Manac • 2- Aspen • Jctr • 5- Lode King • 2- Manac • Manac 10248101 • 2- Marcep • Max Atlas • 2- Renn • 3- Skyreach • 2- Thruway • Trailmobile • Transcraft • 2- Wabash • Westline • 6- Wilson • Wilson CF900

PNEUMATIC BULK TRAILERS: Walinga HT4048102

18 OILFIELD FLOATS: 2009 Hayworth • 2011 K-line K0F105 • 2015 Doepker • Aspen • Aspen OF50-3 • Beothuk • Columbia • Doepker OF9814-S • Easy • 2- Peerless • Peerless PRT453816 • 5- Scona • Scona 240F

LOG TRAILERS: 2- Advance • 2- Arctic • Peerless

DUMP TRAILERS - CENTER OR BOTTOM: 2009 Castleton • 2013 Castleton • 2013 Midland MG38MC3000 • Castleton • Decap

45 DUMP TRAILERS - END: 2009 Doepker 30 FT • 2009 Kjs • 2- 2009 Midland SL3000 • 2009 Midland SL4200 • 2010 Trojan • 2011 Cancade • 3- 2011 Capitol • 2011 Doepker SG14205-S •

2- 2012 Arnes • 4- 2012 Capitol • 2012 Midland MG37SK3400X • 2012 North Country • 2013 Renn SL2500 • 2014 Midland MG25XL2000 • 3- 2015 Midland MG25XL2000 • 2017 Maxi-route • 2018 P J Trailers • 3- Arnes • Cancade • 2- Capitol • Doepker • 2- Load Line • Midland MG35SL3000 • 4- Renn • Southland • 3- Trojan

DUMP TRAILERS - SIDE: 2010 Load Line • 2012 Arnes • 2015 R-way • Midland MG30TW2500 •

CURTAIN SIDE TRAILERS: 2011 Dynamic • Transcraft

21 REEFER TRAILERS: 9- 2010 Great Dane • 3- Great Dane • 4- Kidron • 2- Utility • 3- Wabash

STOCK TRAILERS: 2012 4 Star • 2013 Four Star • Real Industries

GRAIN • SILAGE & PRODUCE TRAILERS: 2009 Lode King PRESTIGE • Doepker • Gravhaul • Sudenga

35 VAN TRAILERS: 2011 Blazer • 2012 Forest River • 2012 Wells Cargo RF7X162 • 2013 Cargo Mate • 3- 2013 Forest River • 2014 Forest River • Al-fab • 2- Argo • Charmac • 2- Custombuilt • Enduramax 24 TRANS • 3- Fruehauf • Fruehauf 46 FT • 2- Great Dane • Hyundai • Interstate • Interstate I712TA2 • Manac • Mirage MGN824TRA4 • Pines • S & H • Stoughton • Ubilt • 2- Utility • 2- Wabash

VACUUM TRAILERS: 2009 Ditch Witch FX20 • Custom Vac • Parkek • Patkek • Westech

26 TANK TRAILERS: 2- 2012 Tremcar • 2013 Dragon Products • 2013 Polar • 2013 Tremcar • 2014 Lazer Inox • 2014 Tremcar • 2015 Meridian Fuel Express PL • 2- 2015 Meridian Fuel Express PR • 2- 2017 Dragon • 5- Advance • Bedard • Hamms • Jasper • Polar SRJ3 • Prairie Metal • Tremcar • Ubilt • Wabash • Westank

55 EQUIPMENT TRAILERS: REEL TRAILERS: 2013 S & S TRR20500 • Peerless

CONTAINER TRAILERS: 3- 2012 Lite Industries • Wabash

26 LIFTS - TELESCOPIC FORKLIFTS: 2009 Caterpillar TL1055 • 2010 Jcb 550 • 2- 2011 Jcb 550-170 • 2- 2012 Jcb 550 • 2- 2012 Jcb 550-170 • 2014 Jcb 509-42 • 2017 Manitou MT932 Easy • 6- 2018 Genie GTH2506 • 2018 Manitou MT932 Easy • Carelift ZB8044-44 • Carelift ZB10055-44 • Gradall 534D9 • Gradall 544D • Ingersoll-rand VR624B • Jlg G1055A • Jlg G1255A • Skyjack ZB10056 • Skyjack ZB20044

LIFTS - ROUGH TERRAIN FORKLIFTS: Caterpillar IT28 • Caterpillar R80 • Sellick 80 • Sellick S100-4

15 LIFTS - FORKLIFTS: Caterpillar P36000 • Caterpillar V80D • Clark CGP20 • Clark CPX25E • Clark MP50SL • 2- Daewoo G25P • Daewoo G30P-5 • Hyster • Hyster H80XL • Linde • Linde H25T • Taylor TYB200M • Towmotor 422S • Toyota 7FGU25

22 LIFTS - SCISSORLIFTS: 2010 Genie GR15 • 5- 2010 Genie GR20 • 2- 2010 Genie GS3232 • 7- 2011 Genie GR15 • 3- 2011 Genie GR20 • 2011 Jlg 4069LE • 2011 Snorkel S3370RT • Genie IWP20S • Jlg CM20N

18 LIFTS - BOOM LIFTS: 2010 Jlg 1350SJP • 2011 Bil Jax XLT1571 • 2- 2011 Jlg 1250AJP • 2012 Genie Z45/25J • 2012 Haulotte/biljax 4527A • 2012 Jlg 1200SJP • 2- Genie S80 • Genie S85 • Genie S125 • Genie Z45/25J • 2- Genie Z80/60 • Grove AMX 68 • 3- Jlg 600AJ

4WD TRACTORS: Case 4490 • Case 4690 • Case 4894 • Case IH 9270 • Ford • Ford 946 • John Deere 8650 • Steiger ST225 • 2- Versatile 895

TRACK TRACTORS: Challenger 75C

MFWD TRACTORS: John Deere 6400 • John Deere 7820 • Zetor 7340 • 2WD TRACTORS: John Deere 3B-554

PULL SCRAPERS: Caterpillar 435 • Caterpillar 463 • Terex 14YD

DUMPERS: Hitachi CG70

ALL TERRAIN VEHICLES: 2011 Land Tamer • 2012 Morooka MST2200VD • 2013 Morooka MST2200VD • Foremost Delta • Foremost Delta 3 • Foremost Delta 3B • Foremost Nodwell 240V • Foremost Super Yukon • Utv International RT01 • Valmet 546F

SNOW EQUIPMENT: Pisten Bully PB200 • Poulan PRO

STREET SWEEPERS: 2013 Freightliner M2106 • Advance Retriever 5100 • 2- Johnson 4000 • Tennant

DRILLS - DRILLS & AIR TRACKS: Sandvik 700 • Sandvik 800 • Watson 3100CM

47 RECREATIONAL VEHICLES: 2009 Fore 235RKS Surveyor • 2009 Key Fuzion • 2009 Keystone • 2010 Thor 29RL Jazz • 2011 Cross 25BH ZINGER • 2013 Cross 39JE Rushmore • 2013 Forest River Surveyor SP3051 • 2013 Yamaha Nytro • 2014 Forest River Sierra • 2015 Arctic Cat XR550 • 2015 Highland 386FLR • 2015 Honda Foreman • 2017 Forest River Freedom 1940 • Cadillac Escalade • Chalet • Coach • Cobra 24 RL • Cruise X-189FBR Fun Fi • Damon Ultra Sport 367 • Dutch 318-DSL Fourwin • Dutchmen Classic • Dynamax Grand Sport Ult • Fleet 26BH Pegasus • Fleetwood • Ford E350 Cutaway • Forest 30TS Cardinal • Freightliner • Freightliner CL120 • Freightliner XC • General Coach Citation 28.5RK • Gulf 29SSS Conquest • Gulf Stream Yellowstone COU • Holiday Rambler Imperial 40PDQ • Jayco 27BH • Kustom KT242 Kustom KO • Kz 951 Sportsman • Mckenn Dune Seeker 260 • Newmar Kountry Star • Palomino Pony • Prowler Ultra Lite 721C • Roadmaster • Scam 29HW Scamper • Travel TTT264 Travelai • Triple 275XL Topaz • Triple E Topaz • Vangard FFW 250 SL FRON • Wilderness • Winnebago C CLASS

AIRCRAFT: Bancarz Thumper 182 • Beechcraft Duke BEECH 60 • Edo 5823430 • Zenair Aalarus CH 2000

GENERATOR SETS - INDUSTRIAL: 2014 Wacker G625 • Caterpillar 715 • 3- Caterpillar SR4B • Cummins DQCA

GENERATOR SETS - HEAVY: Caterpillar SR4B • Caterpillar XQ1250

OTHER ITEMS INCLUDE: 11 SUV • 149 Pickups • 32 Buses • 16 Automobiles

Real estate selling from this Edmonton auction

Open House:
April 7 – 2 to 4 pm



Bob & Connie Bencharski – 2 Parcels of Real Estate
147± Title Acres Farmland – 12± Title Acres Country Residential Acreage – Thorhild, AB
1569950 Alberta Inc. – 1 Parcel of Farmland – 79.5± Title Acres – Thorhild, AB

1

AB/Thorhild County

Parcel 1 – PNE 9-62-21-W4 – 12± Acres Country Acreage

- ▶ 1648± sq ft home, 4 bedrooms, 3 bathrooms, 30 x 40 ft shop, 42 x 72 ft machine shed w/ 16 x 24 ft lean-to, 24 x 40 ft barn, 30 x 38 ft hip roof barn, 12 x 16 ft pump house, and other outbuildings.

Acreage closing date: July 6, 2018

Parcel 2 – NE 9-62-21-W4 – 147± Title Acres – Farmland

- ▶ 145± ac cult, 70± ac oats 2017, balance mixed hay & pasture, fenced, 2 dugouts

Parcel 3 – South Half of NW 27-62-21-W4 – 79.5± Title Acres – Farmland

- ▶ 50± ac cult, seeded pasture, part fenced, balance bush, taxes \$79.65

For more information on parcel 1 & 2: Bob Bencharski – Owner: 780.206.2220

For more information on parcel 3: Paul Diachyshyn – Owner: 780.656.5808

Ritchie Bros. Real Estate – Jerry Hodge: 780.706.6652 Brokerage – Ritchie Bros. Real Estate Services Ltd.

Property may be viewed without an appointment



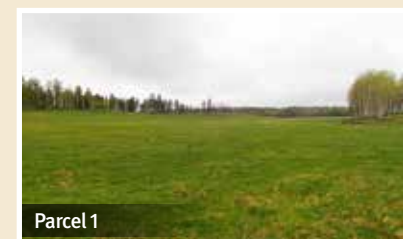
Ralph & Diane Thompson
1 Parcel of Farmland w/Proven Gravel Reserves – 156.71± Title Acres
\$6500 Surface Lease Revenue – Sundre, AB

2

AB/Clearwater County

Parcel 1 – SE 32-34-4-W5 – 156.71± Title Acres – Farmland

- ▶ 115± ac cult, seeded pasture, balance is Schrader Creek, native pasture & bush, fenced, \$6,500 annual Surface Lease Revenue, **2.2 million m³ proven gravel reserves**, Clearwater County development permit approved, taxes \$1,566.76



Parcel 1

Trevor Thompson – Contact: 403.473.0937

Diane Thompson – Owner: 403.638.1301

Ritchie Bros. Real Estate – Jerry Hodge: 780.706.6652 Brokerage – Ritchie Bros. Real Estate Services Ltd.

Property may be viewed without an appointment



Dale & Sharilyn Havanka
4 Parcels of Farmland – 344.81 ± Title Acres
\$2700 Surface Lease Revenue – Falun & Bearhills Lake, AB

3

AB/Wetaskiwin County

Parcel 1 – PSW 32-46-26-W4 – 75.61± Title Acres – Farmland

- ▶ 70± ac cult, canola 2017, part fenced, taxes \$210.36, \$2700 SLR*

Parcel 2 – PSE 32-46-26-W4 – 105.64± Title Acres – Farmland

- ▶ 85± ac cult, canola 2017, balance native hay & seasonal creek, taxes \$404.86

Parcel 3 – PSE 32-46-26-W4 – 51.37± Title Acres – Farmland

- ▶ 35± ac cult, canola 2017, balance native hay & seasonal creek, taxes \$173.11

Parcel 4 – NE 36-45-26-W4 – 112.19± Title Acres – Farmland

- ▶ 100± ac cult, canola 2017, Bearhills Lake frontage, Hwy 2 frontage, taxes \$376.13

Dale Havanka – Owner: 780.387.6711

Ritchie Bros. Real Estate – Jerry Hodge: 780.706.6652

Brokerage – Ritchie Bros. Real Estate Services Ltd.

Open House:
April 11 – 6 to 8 pm



Judicial Auction
2007 Industrial Condo
2600± Sq Ft Bay & Office – Rocky Mountain House, AB

4

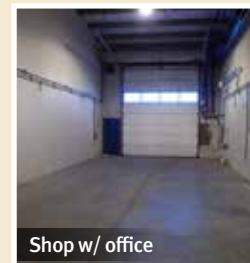
AB/Clearwater County

Parcel 1 – Unit 2 Condominium Plan 1120560
2600± Sq Ft Industrial Condo

- ▶ Zoned LI (Light Industrial)
- ▶ Approximately 0.64± ac of yard space
- ▶ 2600± sq ft single bay
 - 830± sq ft main floor office
 - 800± sq ft mezzanine office
 - 22 ft x 80 ft shop bay
- ▶ 2017 taxes \$4,803.59
- ▶ Condo fees: \$395.00 plus GST/month

Ritchie Bros. Real Estate – Jerry Hodge: 780.706.6652

Brokerage – Ritchie Bros. Real Estate Services Ltd.



Shop w/ office



For auction and property details visit: rbauction.com/realestate

Real estate selling from the Edmonton June auction

Property may be viewed without an appointment

River's Crossing Ltd.
25 Lots of Recreational /Residential Real Estate Overlooking Shadow Mountain Golf Club Cranbrook, BC

On site in Cranbrook, BC– Matt Oberle: 780.940.7546
Head Office in Edmonton, AB – Valentino Wong: 780.246.3680
Ritchie Bros. Real Estate – Jerry Hodge: 780.706.6652
Realtor® – Tom Moran PREC*: 250.784.7090
Brokerage – Re/Max Dawson Creek Realty

Open House:
May 10 & May 30 – 5 to 7 pm



N E C Construction Ltd.
15,600± Sq Ft Industrial Shop & Office
6.15± Title Acres – Lac La Biche, AB

Owner – Albert Benson: 780.623.0759
Ritchie Bros. Real Estate – Jerry Hodge: 780.706.6652
Brokerage – Ritchie Bros. Real Estate Services Ltd.

Property may be viewed by appointment



N E C Construction Ltd.
2 Parcels of Lease Land
27.86± Acres w/ 174 Person Camp
11.43± Acres Industrial Lot – Conklin, AB

Owner – Albert Benson: 780.623.0759
Ritchie Bros. Real Estate – Jerry Hodge: 780.706.6652
Brokerage – Ritchie Bros. Real Estate Services Ltd.



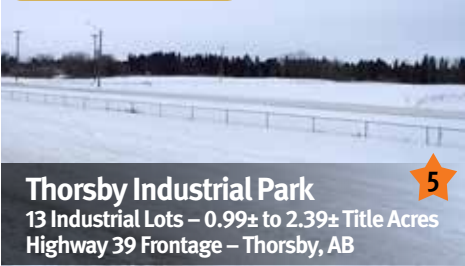
Parcel 1 may be viewed by appointment
Parcels 2, 3 & 4 may be viewed without an appointment



Albert & Colette Benson
4 Parcels of Agricultural Real Estate
479.78± Title Acres
108.91± Acres Farm Development Lease
800± Acres Grazing Lease –Lac La Biche, AB

Owner – Albert Benson: 780.623.0759
Ritchie Bros. Real Estate – Jerry Hodge: 780.706.6652
Brokerage – Ritchie Bros. Real Estate Services Ltd.

Property may be viewed without an appointment



Thorsby Industrial Park
13 Industrial Lots – 0.99± to 2.39± Title Acres
Highway 39 Frontage – Thorsby, AB

Owner – Stan George: 780.975.4863
Ritchie Bros. Real Estate – Jerry Hodge: 780.706.6652
Brokerage – Ritchie Bros. Real Estate Services Ltd.

Open House:
April 14 & May 12 – 2 to 4 pm



Terry & Kimberly Ostapovich
80± Title Acres – \$8000 Surface Lease Revenue
2272± Sq Ft Home– Bruderheim, AB

Owner – Terry Ostapovich 780.913.3447
Ritchie Bros. Real Estate – Jerry Hodge: 780.706.6652
Brokerage – Ritchie Bros. Real Estate Services Ltd.

Open House:
May 26 & June 2 – 2 to 4 pm



Don & Yvonne Bouvette
2 Country Residential Acreages
3.6± Title Acres Each – 936± Sq Ft Cabin &
960± Sq Ft Cabin – Spruce View, AB

Owner – Don Bouvette: 403.357.9207
Ritchie Bros. Real Estate – Jerry Hodge: 780.706.6652
Brokerage – Ritchie Bros. Real Estate Services Ltd.

Open House:
May 5 & May 19 – 2 to 4 pm



Connie Harmon
1400± Sq Ft Bi-Level Home on Large Corner Lot
0.335± Title Acres – Mundare, AB

Owner – Connie Harmon: 780.698.2553
Ritchie Bros. Real Estate – Jerry Hodge: 780.706.6652
Brokerage – Ritchie Bros. Real Estate Services Ltd.

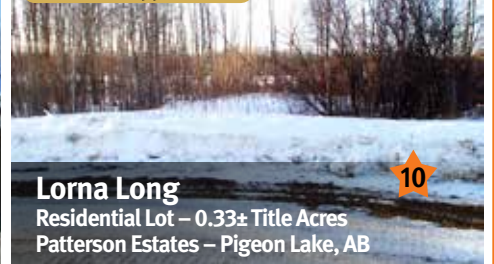
Open House:
May 13 & May 27 – 2 to 4 pm



803969 Alberta Ltd.
77.48± Title Acres – Hwy 63 Frontage
Home, 2 Garages & Quonset
\$3000± Surface Lease Revenue– Boyle, AB

Ritchie Bros. Real Estate – Jerry Hodge: 780.706.6652
Brokerage – Ritchie Bros. Real Estate Services Ltd.

Property may be viewed without an appointment



Lorna Long
Residential Lot – 0.33± Title Acres
Patterson Estates – Pigeon Lake, AB

Ritchie Bros. Real Estate – Jerry Hodge: 780.706.6652
Brokerage – Ritchie Bros. Real Estate Services Ltd.

For auction and property details visit: rbauction.com/realstate



2008 Caterpillar 988H



2014 Kenworth C500B w/Manitex 4596



2 – 2011 Kenworth T800 Hydro Vac



2014 John Deere 670G LC



2015 Telsmith SBS 52 In. 400 HP



2012 Gerrys 16 Wheel & 2016 Matrixx 16 Wheel



3 of 4 – 2014 Caterpillar D6T LGP

» Visit our website for complete and up-to-date listings for this auction at rbauction.com

Edmonton, AB | April 24 – 28, 2018 (Tues–Sat)

rbauction.com

rb RITCHIE BROS.
Auctioneers®