

# WELCOME TO OUR PREMIER GLOBAL AUCTION

**NOW 6 DAYS**  
Unreserved public auction



**Orlando, FL**  
February 19–24, 2018 (Mon–Sat)



3 – 2017 Caterpillar 745C 6x6 – Located Apache Junction, AZ



**LARAMIE**  
SINCE 1917



Manitowoc 16000 440 Ton – Located Wixom, MI



**Ring Power**

2 of 5 – 2012 Caterpillar 120M VHP



**KELLY TRACTOR**

2015 Caterpillar 980M



2016 Kenworth T800

- 3447+** construction equipment
- 337+** lifting & material handling
- 902+** transport trucks & trailers
- 190+** aggregate equipment

**rb RITCHIE BROS.**  
Auctioneers®

**60**  
YEARS

# Orlando, FL

February 19–24, 2018

Mon–Sat | 8:00 am

Phone: **1.855.331.5757**

Fax: 1.863.420.2447

**9,300 items & counting** (as of Jan 27)

Visit [rbauction.com/Orlando2018](http://rbauction.com/Orlando2018)  
for complete and current auction information

Auction Business License #AB303, Auctioneer Trevor J. Moravec # AU3889

## Important dates and times

### Office hours & registration

Regular hours:	Mon–Fri	8:00 am–5:00 pm
Registration:	Feb 15–18	8:00 am–5:00 pm
Registration:	Feb 19–24	6:00 am–6:00 pm
Sale days office hours:	Feb 19–24	6:00 am–6:00 pm
Open weekends:	Feb 17–24	8:00 am–5:00 pm

### Shuttle

Parking lot shuttle bus:	Feb 12–18	7:00 am–6:00 pm
	Feb 19–24	6:00 am–6:00 pm

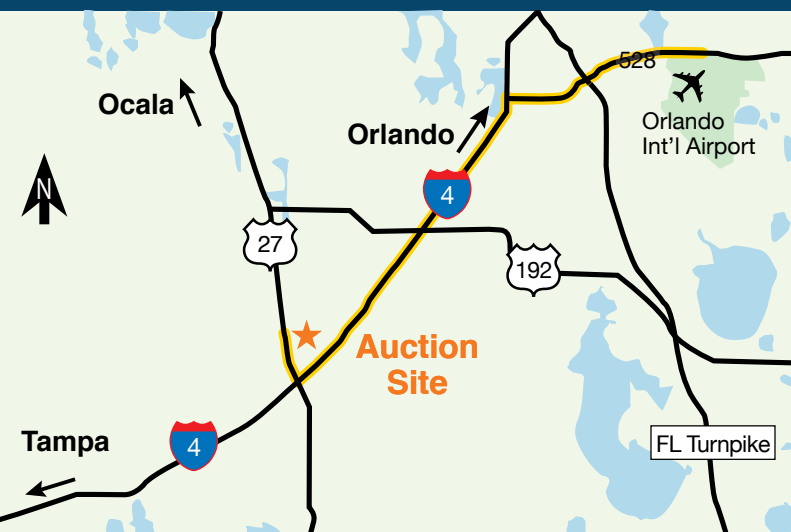
### Timed auction lots

Bidding starts:	Feb 15	8:00 am–5:00 pm
-----------------	--------	-----------------

(Items close at various times throughout the week)

### Equipment inspection & yard access

Yard access/check-in:	Mon–Fri	8:00 am–4:00 pm
Yard shuttle cart service:	Feb 19–24	7:00 am–5:00 pm
Equipment removal date:	March 30, 2018	



## » Prepare – before heading to the auction

### Directions

**Auction location:** 700 Ritchie Road, Davenport, FL 33897

**GPS Coordinates:** 28° 14' 20.641"N, 81° 38' 50.866"W

**From Orlando International Airport:** take Beach West (SR 528) until it dead ends into Interstate 4 (I-4). Take I-4 West and follow to Exit 55 (US 27). Take US 27 North for about 1/4 mile and sale site will be on the right.

**From Tampa International Airport:** Take George Bean Parkway to I-4 East, Exit 55, North on Hwy 27 to 700 Ritchie Rd.

### Car Rental

Take advantage of exclusive rental car discounts.

AVIS discount code : C039702 / Budget discount code: A062002

## Auction highlights

Featuring equipment from

Ring Power

KELLY TRACTOR

Blanchard

Carolina

Cleveland Brothers

Louisiana

M-Allister

Milton

PipeLine Machinery

YANCEY

NORTRAX

Kiewit

**VOLVO**  
Construction Equipment

LINDER INDUSTRIAL MACHINERY COMPANY

DOZIER GRAPES

LARAMIE SINCE 1917

TREKHER GROUP

J&E

MECO MIAMI

R.B.

## » Registration – plan ahead, registration can be busy

### Bid in person or online

Be prepared and register to bid early. We offer multiple ways for you to register: if you're bidding in person, register at the auction site. If you're bidding online, register via our website at [rbauction.com](http://rbauction.com)

**IMPORTANT:** If you've registered to bid online in the live auction or the online Timed Auction, but want to bid on site, you must register in person at the auction site.

### Deposit requirements

You may be required to place a **refundable bid deposit** equivalent to 25% of the amount you want to spend or your maximum bidding limit.

**Online bidders** – you may need to place a refundable deposit before you bid – check the auction details on our website for more information.

**International bidders (countries other than the United States and Canada)** – unless you have made prior arrangements with Ritchie Bros., you are required to place a deposit equaling 25% of the total expected purchases, or US \$25,000, whichever is higher. Accepted methods of payment include cash, wire transfer, credit card or certified/cashier's check. This deposit will be refunded if no purchases are made.

## » Bidding options – we offer several convenient ways to bid (including via our mobile app)

### On site – live auction and Timed Auction

1. **Bring photo ID** to register in person. There is no charge for registration, but you must present official photo identification (identity card, driver's license, or passport).
2. Once you've registered on site you'll receive our listing catalog with a unique bidder number or you will have the option to download a digital version. You will also receive a PIN card to access the Timed Auction. You can use this PIN to access the Timed Auction kiosks on-site, as well as remotely online.
3. Check the auction schedule in your listing catalog to find when and where each item will be sold.

**IMPORTANT:** If you want to bid online, you will need to register separately on our website.

### Proxy bid

Proxy bids are a great alternative if you want to bid on two items being sold around the same time, or you need to bid from a remote location without reliable internet access.

1. Register to bid at the auction site.
2. Place your maximum bid in person or by phone
3. We will do the bidding for you, up to and including the maximum amount you specify and your purchase will be obtained at the lowest bid possible.

**NOTE:** the minimum proxy bid we will accept by phone is **US\$10,000**.

### What is a Timed Auction?

We sell equipment attachments, consumer goods and other smaller items in an online Timed Auction, with no auctioneer. Bidding opens February 16 and closes at staggered times during the auction. Every item is sold to the highest bidder when bidding closes. Check our website or the auction day listing catalog to find out which items are being sold by Timed Auction.

### Online – live auction and Timed Auction

To bid online in real time in the live auction or to bid in the Timed Auction, sign into your online account or sign up for a free account if it's your first time:

1. Create a free online account and activate online bidding.
2. Click 'Register to bid online' on the auction calendar and complete your registration.
3. You may be required to place a refundable bid deposit equivalent to 25% of the amount you want to spend or your maximum bidding limit.

Note: Some TAL assets, will physically be located at Ritchie Bros. Auctioneers Atlanta Facility in Newnan, GA.

### Online preBid

If you are unavailable or away from your computer during the live auction, you can place an online preBid on items that have not yet come up for auction, and the system will bid for you. A preBid allows you to define your maximum price for a lot before bidding begins, and the system will place bids for you up to your defined maximum.

See full instructions on our website at: [rbauction.com/online](http://rbauction.com/online)

### Mobile App

While you're on the go browse or bid on items from your phone.



[rbauction.com/app](http://rbauction.com/app)

## » At the auction – visit our services tent for more ways to help you get the equipment you need

### Equipment Inspection

Search our current inventory online at [rbauction.com/Orlando](http://rbauction.com/Orlando) – we add new items daily. Check the detailed equipment information and photos online and compare similar items side-by-side. For added confidence, visit the auction site to test and inspect the equipment before you bid, or send someone to do the inspection for you. Please be aware that all items are sold “as is, where is.”

### Financing

Get the equipment you need and save your cash with special No Payments for 120 Days financing from Ritchie Bros. Financial Services.

### Buyer Fee

Transaction fee: (a) 10% on all Lots selling for \$5,000 or less, (b) 3.85% on all Lots selling for over \$5,000 up to \$33,500, with a minimum fee of \$500 per Lot or, (c) \$1,290 on all Lots selling for over \$33,500.

### Payments

All payments are to be made in US funds. Purchases under \$10,000 must be paid in full on the day of the sale. All other purchases must be paid for within seven (7) days of the termination of the auction. No purchase may be removed until paid in full.

**NOTE:** This policy is strictly enforced. No purchase will be released without payment as described below or until non-certified funds clear our bank.

**Domestic buyers (US & Canada):** cash, wire transfer, certified check, or personal/company checks if they are accompanied by an irrevocable letter of guarantee from your bank.

**International buyers: wire transfer directly from your bank.**

Bank of America, 100 W 33rd St., New York, NY 10001

Credit To: Ritchie Bros. Auctioneers (America) Inc.

Routing: 026 009 593 / Swift: BOFAUS3N Account No: 898 03117 0263

### Titles / Registration

Items purchased that require a Title or Registration Certificate must be paid for by guaranteed funds on the day of the sale; all Titles and Registration Certificates will be processed upon receipt of guaranteed payment and will be sent via FedEx to the purchaser. FedEx account will be required.

### Equipment Removal

No item may be removed until purchases are paid in full. All lots must be removed by March 30, 2018 or a storage fee may be applied. For international buyers: Some equipment may require modifications prior to removal to meet important safety regulations. Contact your customs broker in advance of sale day for information on your import/export obligations.

### Shipping

We offer multiple shipping options on site. Visit uShip in our information and services tent just outside of registration. Other transportation companies will also be available in the shipping and transportation tent. Overseas customers please visit our website for recommended carriers at [rbauction.com/Orlando](http://rbauction.com/Orlando).

### IronClad Assurance

Lots with this logo are protected by IronClad Assurance. Buy with confidence knowing that this lot has been given a full and detailed inspection by an industry expert.



# February 19, 2018 (Monday) 8:00am Listings on page 4-9 inclusive

# DAY 1

Notice to bidders: Due to the large number of items for day 1, it will be necessary to conduct two simultaneous rings.

**156** skid steer loaders | **232** multi terrain loaders | **92** loader backhoes  
**102** telescopic forklifts | **74** forklifts | **121** scissorlifts | **212** boom lifts  
**36** dumpers



2 of 3 – Kalmar RT240 53000 Lb 4x4x4



2016 Case SR270 – Low meter hours



Unused – 2018 John Deere 333G



2014 Caterpillar 420FIT 4x4



2 of 3 – 2017 Manitou MT932 7054 Lb 4x4x4



3 of 4 – 2017 Polaris Ranger 570 4x4



1 of 2 – 2010 JLG 1350SJP 4x4x4



2015 Bobcat S650



2015 Caterpillar 246D



1 of 2 - Caterpillar 236B



2 of 6 - 2017 Mattson ML525W 8025



2015 Wacker Neuson SW28



2016 Bobcat T590



2014 Bobcat T590



Caterpillar 287B



2014 Terex PT100



Caterpillar 430EIT 4x4



2013 Volvo BL60B 4x4



2009 Caterpillar TL1255 12000 Lb 4x4x4



1 of 4 - 2014 Caterpillar TL642 6500 Lb 4x4x4



2017 Genie GTH3007 6614 Lb 4x4x4  
Low meter hours



1 of 2 - 2009 Skytrak 1054 10000 Lb 4x4x4



3 of 4 - Unused 2018 Genie GTH2506 5511 Lb  
4x4x4



2 - Komatsu FG25ST-12 4480 Lb



2009 Toyota 7FDU70 14100 Lb



Kalmar RT240 5300 Lb 4x4x4



Genie GS4390 4x4



JLG 2032ES



1 of 2 - 2011 JLG 2630ES



1 of 2 - JLG 1930ES



1 of 2 – 2015 Genie S45 4x4



1 of 3 – Genie Z80/60 4x4x4



1 of 8 – Genie Z135/70 4x4x4



Genie S65 4x4



1 of 2 – JLG 450A Series II 4x4



Komatsu CD60R-1



1 of 2 – 2013 Morooka MST2200VD



Hico HT15H



2015 Rosco 4930 Sweep-Pro



1 of 5 – 2015 Broce CR350 – Located Baton Rouge, LA



2 of 11 – 2015 Bobcat 3400XL 4x4



2013 John Deere Gator HPX 4x4



4 of 6 – 2013 Kubota RTV900 4x4

# Equipment listings

**156- SKID STEER LOADERS:** Bobcat 873 • 4- Bobcat 863 • 2015 & 2014 Bobcat S850 2 Spd • Bobcat 773 • Bobcat 763 • 5- Bobcat 753 • 2013 Bobcat S750 • 2013 Bobcat S750 2 Spd • 2012 Bobcat S750 • 2012 Bobcat S750 High Flow • 2011 Bobcat S750 • Bobcat 743 • 2016 Bobcat S740 • 2015 & 2013 & 2012 Bobcat S650 • 2011 Bobcat S650 2 Spd • 2015 Bobcat S590 • 2015 Bobcat S570 Skid Steer loader • 2013 Bobcat S570 • 6- 2014 Bobcat S530 • 2013 Bobcat S510 Skid Steer loader • Bobcat S300 2 Spd • Bobcat A300K • Bobcat S250 2 Spd • 2- 2012 Bobcat S185 • 2- 2012 Bobcat S175 2 Spd • 6- 2012 Bobcat S175 • 2011 Bobcat S175 2 Spd • Bobcat S175 • 2013 Bobcat S160 • Bobcat S130 • 2016 Case SR270 High Flow Low meter hours • 2013 Case SR250 • 2011 Case SR220 • 2- Case 95XT • 2011 Caterpillar 279C • 2- 2015 Caterpillar 272D • 2014 Caterpillar 272D XHP 2 Spd • 2014 Caterpillar 272D XPS High Flow • 2- 2014 Caterpillar 272D • 2- 2011 Caterpillar 272C • Caterpillar 268B • 2- 2016 Caterpillar 262D • 2015 Caterpillar 262D High Flow • 5- 2015 Caterpillar 262D • 2- 2014 Caterpillar 262D 2 Spd • 4- 2014 Caterpillar 262D • 32009 Caterpillar 262C High Flow • Caterpillar 262C • Caterpillar 262B • 2013 Caterpillar 259B3 2 Spd • 2- 2013 Caterpillar 259B3 • 2010 Caterpillar 256C • 3- 2012 & 2011 Caterpillar 252B3 • Caterpillar 252B • Caterpillar 248 • 2015 Caterpillar 246D • 2015 Caterpillar 246D XPS 2 Spd High Flow • 2009 Caterpillar 246C • 4- 2015 & 2014 Caterpillar 242D • 2- 2013 & 2012 Caterpillar 242B3 • 2013 Caterpillar 242B • 2016, 2- 2015 & 2014 Caterpillar 236D • 2014 Caterpillar 236D 2 Spd • 2- Caterpillar 236B • 2- Caterpillar 236 • 4- 2016 & 2015 Caterpillar 232D • Caterpillar 232B • Caterpillar 228 High Flow • 2016 & 2015 Caterpillar 226D • 3- 2015 Caterpillar 226B3 • 2014 Caterpillar 226B 3 Skid Steer Loader • 2014 • 2- 2012 • 2- 2012 Caterpillar 226B3 • Caterpillar 226B • Caterpillar 226B Skid Steer Loader • Caterpillar 226 • 2015 Gehl SL4640E • 2012 JCB 225 • 2010 John Deere 328D • 2012 & 2011 John Deere 326D • John Deere 320 • 2015 John Deere 318E • 2013 & 4- 2012 John Deere 318D • Komatsu SK1020-5 • 2014 Volvo MC115C • 2014 Volvo MC95C • 2015 Wacker Neuson SW28.

**232- MULTI TERRAIN LOADERS:** ASV RC50 Compact Track • ASV RC30 Compact Track • 2103 Bobcat T750 • 2015 Bobcat T750 2 Spd High Flow Compact Track • 2012 Bobcat T750 2 Spd Compact Track • 2011 Bobcat T750 Compact Track • 2015 & 2012 Bobcat T650 Compact Track • 2015 Bobcat T630 Compact Track • 2015 & 2014 Bobcat T630 • 2014 Bobcat T630 2 Spd Compact Track • 2012 Bobcat T630 High Flow Compact Track • 2016, 2015, 2- 2014 & 4- 2013 Bobcat T590 Compact Track • 2016 Bobcat T450 Compact Track • Bobcat T300 • Bobcat T300 High Flow Compact Track • 2- Bobcat T250 Compact Track • Bobcat T200 High Flow Compact Track • 2012 & 2- 2011 Bobcat T190 Compact Track • Bobcat T190 • 5- Bobcat T190 Compact Track • Bobcat MT55 Walk Behind • 2014 Caterpillar 299D XHP 2 Spd Compact Track • 2016 Caterpillar 299D2 XHP Compact Track • 2016 Caterpillar 299D2 XHP 2 Spd Compact Track • 2- 2016 Caterpillar 299D2 Compact Track • 2015 Caterpillar 299D2 2 Spd High Flow Compact Track • 2015 Caterpillar 299D2 XHP Compact Track • 2015 Caterpillar 299D High Flow Compact Track • 2015 Caterpillar 299D XPS 2 Spd High Flow Compact Track • 2- 2015 Caterpillar 299D Compact Track • 3- 2015 Caterpillar 299D 2 Spd Compact Track • 2014 Caterpillar 299D Compact Track • 2014 Caterpillar 299D XHP 2 Spd High Flow Compact Track • 2013 Caterpillar 299D Compact Track • 2013 Caterpillar 299D XHP 2 Spd Compact Track • 2012 Caterpillar 299C Compact Track • 2- 2015 Caterpillar 289D Compact Track • 2- 2015 & 3- 2014 Caterpillar 289D 2 Spd Compact Track • 6- 2014 Caterpillar 289D Compact Track • 2013 Caterpillar 289C2 Compact Track • 2013 Caterpillar 289C2 2 Spd Compact Track • 2012 Caterpillar 289C2 Compact Track • 2011 Caterpillar 289C • 2009 Caterpillar 289C 2 Spd Compact Track • 2009 Caterpillar 289C XPS 2 Spd High Flow Compact Track • 2014 Caterpillar 287D 2 Spd • 2009 Caterpillar 287C High Flow • 2- Caterpillar 287B • 2016 Caterpillar 279D Compact Track • 2016 Caterpillar 279D 2 Spd Compact Track • 2015 Caterpillar 279D Compact Track • 2015 Caterpillar 279D 2 Spd Compact Track • 2015 Caterpillar 279D XPS 2 Spd High Flow Compact Track • 6- 2014 & 2013 Caterpillar 279D Compact Track • 2012 Caterpillar 279C2 2 Spd Compact Track • 2011 & 4- 2010 Caterpillar 279C 2 Spd Compact Track • 2- 2015 Caterpillar 277D • Caterpillar 277C 2 Spd High Flow • 2016 Caterpillar 259D Compact Track • 2015 Caterpillar 259D 2 Spd • 6- 2015 Caterpillar 259D 2 Spd Compact Track • 8- 2015 Caterpillar 259D Compact Track • 2014 Caterpillar 259D 2 Spd High Flow • 3- 2014 Caterpillar 259D 2 Spd Compact Track • 4- 2014 Caterpillar 259D Compact Track • 2013 Caterpillar 259B3 Compact Track • 2013 & 2- 2012 Caterpillar 259B3 2 Spd Compact Track • 4- 2012 Caterpillar 259B3 Compact Track • 2012 Caterpillar 259B • 2- 2014 Caterpillar 257D • 2013 Caterpillar 257B3 2 Spd • 2- 2010 Caterpillar 257B2 • Caterpillar 257B2 2 Spd High Flow • 2- Caterpillar 257B2 • Caterpillar 257B High Flow • 5- Caterpillar 257B • 2- 2015 Caterpillar 249D • 2015 • 2- 2014 • 2- 2013 & 2012 Caterpillar 247B3 • 2012 Caterpillar 247B Compact Track • 2015 Caterpillar 239D Multi Terrain Compact Track • Gehl CTL60 2 Spd Compact Track • 2010 JCB 190T Compact Track • 2018 John Deere 333G Compact Track • 2- 2013 John Deere 329E Compact Track • 2012 John Deere 323D Compact Track • John Deere CT322 Compact Track • 2013 & 2012 John Deere 319D Compact Track • 2013 Takeuchi TL230 Compact Track • 2013 Takeuchi TL230 2 Spd Compact Track • 2011 Takeuchi TL230 Compact Track • 2012 Takeuchi TL220 2 Spd Compact Track • 2- Takeuchi TL150 Compact Track • Takeuchi TL130 Compact Track • 2013 TAKEUCHI TL10 Compact Track • 2014 Terex R190T Compact Track • 2014 Terex PT100 High Flow Compact Track • 2- 2015 Terex R070T Compact Track • 2013 Terex PT70 2 Spd

High Flow Compact Track • 2010 Terex PT50 2 Spd Compact Track • 2013 & 2009 Terex PT30 Compact Track.

**92- LOADER BACKHOES:** Case 590 • Case 590 4x4 • 4- 2013 Case 580SN • Case 580SM 4x4 • 2011 Case 580N • 2010 Case 580N 4x4 • 2- 2015 Caterpillar 430F • Caterpillar 430EIT 4x4 • 2011 Caterpillar 430E • 4- 2017 Caterpillar 424B2 • 2015 Caterpillar 420FST 4x4 • 2- 2014 Caterpillar 420FST • 2012 Caterpillar 420FST 4x4 • 2014 Caterpillar 420FIT 4x4 • 3- 2012 & 2009 Caterpillar 420EIT 4x4 • 2012 Caterpillar 420E • Caterpillar 420E 4x4 • 2- Caterpillar 420E • Caterpillar 420D IT 4x4 • Caterpillar 420DIT • Caterpillar 420DIT 4x4 • 2- 2013 & 2- 2012 Caterpillar 416F • 2- Caterpillar 416D 4x4 • Caterpillar 416CIT • Caterpillar 416C • Caterpillar 416C 4x4 • Ford/New Holland 655D 4x4 • JCB MIDI CX • 2014 John Deere 410K • 2012 John Deere 410K 4x4 • John Deere 410G 4x4 • John Deere 410E • 2- 2014 & 2013 John Deere 310SK • John Deere 310SJ 4x4 • John Deere 310SG • 2- John Deere 310SG 4x4 • 2012 & 2010 John Deere 310J • 2010 John Deere 310J 4x4 • John Deere 310J • 2- John Deere 310G • 2- John Deere 310G 4x4 • John Deere 310A • Komatsu WB146-5 4x4 • 2010 Komatsu WB142-5 • 3- 2014 Terex TLB840 • Terex 760B • 2011 Terramite T7 • 2009 Terramite T5C • 2013 Volvo BL70B 4x4 • 2012 Volvo BL70B 4X4 • Volvo BL70 4x4 • 2013 Volvo BL60B 4x4 • 2012 Volvo BL60B.

**102- TELESCOPIC FORKLIFTS:** 4- 2014 & 2013 Caterpillar TL1255C 12000 Lb 4x4x4 • 2009 Caterpillar TL1255 12000 Lb 4x4x4 • Caterpillar TL1255 12000 Lb 4x4x4 • 2014 & 2013 Caterpillar TL1055C 10000 Lb 4x4x4 • 2012 & 2010 Caterpillar TL1055 10000 Lb 4x4x4 • 4- 2014 Caterpillar TL642C 6600 Lb 4x4x4 • 2012 Caterpillar TL642 6500 Lb 4x4x4 • Caterpillar TL642 6500 Lb 4x4x4 • Caterpillar TH560B 11000 Lb 4x4x4 • 2014 Caterpillar TH514C 11000 Lb • 2- 2014 Caterpillar TH514C 11000 Lb 4x4x4 • 2- 2013 Caterpillar TH514 11000 Lb 4x4x4 • Unused - 2016 Caterpillar TH417C 8800 Lb 4x4x4 • 2- 2014 Caterpillar TH417C 8800 Lb 4x4x4 • 2013 Caterpillar TH417C 8800 Lb 4x4x4 • 2013 Caterpillar TH414C 8000 LB 4X4X4 • 5- Gehl DL1155H 11000 Lb 4x4x4 • 2012 Genie GTH5519 • 2011 Genie GTH5519 5500 Lb 4x4x4 • 2013 Genie GTH4013SX 8800 Lb 4x4x4 • Unused - 2018 • 2017 & 2- Unused - 2017 Genie GTH3007 6614 Lb 4x4x4 • 4- Unused - 2018 Genie GTH2506 5511 Lb 4x4x4 • 2016 Genie GTH2506 5511 Lb 4X4X4 • 2- 2012 Genie GTH844 • 2011 Genie GTH844 8000 Lb 4x4x4 • 2- 2011 Genie GTH844 • 2- Genie GTH844 8000 Lb 4x4x4 • Gradall 534D9 9000 Lb 4x4 • JCB 541-70 9000 Lb 4x4x4 • JCB 527-55 6000 LB 4X4X4 • 2012 JCB 524-50 5000 LB 4X4X4 • JCB 520-50 4400 Lb 4x4 • 3- JCB 520-50 4400 Lb 4X4X4 • 2011 JCB 520-40 4000 Lb 4X4X4 • JCB 520 4x4 • 2013 JCB 515-40 3307 Lb 4X4X4 • 2012 JCB 510-56 10000 Lb • 2009 JCB 506CHC 6000 Lb 4x4x4 • JCB 506C 6000 Lb 4x4x4 • 3- JLG 2505 5500 Lb 4x4 • 2012 JLG G1255A • JLG G1255A 12000 Lb • JLG G1055A • 2012 & 2011 JLG G943A 9000 Lb 4x4x4 • JLG G642A 6000 Lb 4x4x4 • 3- JLG G642A 6600 Lb 4x4x4 • 2012 Lull 1044C-54 10000 Lb • Lull 644E-42 6000 Lb 4x4 • Lull 644E-42 6000 Lb 4x4x4 • Lull 644B-37 6000 Lb 4x4x4 • 2- Unused - 2017 Manitou MT932 7054 Lb 4x4x4 • Unused - 2017 Manitou MT625 5500 LB 4X4X4 • Skytrak 10541 10000 Lb 4x4x4 • 2- 2009 Skytrak 10054 10000 Lb 4x4x4 • Skytrak 10054 10000 Lb • 3- Skytrak 10054 10000 Lb 4x4x4 • Skytrak 10042 10000 Lb 4x4x4 • 2010 Skytrak 8042 • 2- Skytrak 8042 8000 Lb 4x4x4 • 2013 Skytrak 6042 6000 Lb 4x4x4 • 2009 SKYTRAK 6042 6000 Lb 4x4x4 • Skytrak 6042 6000 Lb • Skytrak 6042 6000 Lb 4x4x4 • 2- Skytrak 6036 6000 Lb 4x4x4 • Terex SS1048 10000 Lb 4x4x4.

**14- ROUGH TERRAIN FORKLIFTS:** Case 586G • 2- Case 586G 6000 Lb 4x4 • Case 585G 5000 Lb 4x4 • 2010 Harlo HP5000 5000 Lb 4x4 • Ingersoll-Rand RT706G • JCB 940 4x4 • JCB 930 6000 Lb 4x4 • JCB 926-4 4x4 • JCB 926-4 5700 Lb 4x4 • 2- JCB 926 • Lift-Master 721HDD 5610 Lb • 2015 Maximal FD50TC2WP3.

**74- FORKLIFTS:** Allis-Chalmers • Caterpillar P6000 6000 Lb • 2- Caterpillar 988B Container Handler • 6- 2012 Caterpillar GC55K • 2- Caterpillar T50D 5000 Lb • 4- 2012 Caterpillar GC35K 7000 Lb • 3- 2012 Caterpillar GC35 • 2- Caterpillar DP30K • Caterpillar DP25 • 2012 Caterpillar 2C5000 5000 Lb • 3- 2012 Caterpillar 2C6000 • Clark CMP50 • Daewoo GC25S-3 5000 Lb • 2009 Doosan D30S-5 5500 Lb • Doosan G25E3 • 2015 Doosan D25S-D • 2013 Heli CPYD25 • 2010 Heli CPYD25-TY5 5000 Lb • Hyster S120FT • Hyster S50XM 4450 Lb • Hyster H50FT 4800 Lb • Hyster H40XM 4000 Lb • 2010 Kalmar RT240 53000 Lb 4x4x4 Container Reach Stacker • Kalmar RT240 53000 Lb 4x4x4 Container Reach Stacker • Kalmar P50 4500 Lb • Komatsu FG35BCS7H 6780 Lb • Komatsu FG25T-16-G/LP • 2011 Komatsu FG25T-16 • 2- Komatsu FG25ST-12 4480 Lb • Komatsu FG25ST-11 • Komatsu FG25C-8 5000 Lb • Linde H20CT60003 3000 Lb • Mitsubishi FD35 • Mitsubishi FG30N 6000 Lb • 2- Moffett TM55 Piggyback • 2- 2012 & 2011 Moffett Piggyback • Nissan YF03A35ATV 8000 Lb • Princeton PB50 Piggyback • Taylor TX360L 36000 Lb • Towmotor 462SLP4024 4000 Lb • 2009 Toyota 8FGCU25 4800 Lb • Toyota 7FGU45 • Toyota 7FGU45 9150 Lb • Toyota 7FGU35 7000 Lb • Toyota 7FGU30 5350 Lb • Toyota 7FGU25 5000 Lb • Toyota 7FGAU50 9500 Lb • 2009 Toyota 7FDU70 14100 Lb • Toyota 5FGC25 5000 Lb • Yale GDP155 • Yale GDP155 14700 Lb • Yale GLP090LJNBV109 8650 Lb • Yale GDP060VX • Yale GP050RDUAV086 5000 Lb.

**ELECTRIC FORKLIFTS:** 4- Qty Of Crown 6000 Lb Electric Pallet Jacks • Caterpillar E6000 6000 Lb • 2010 Caterpillar E3000 • Caterpillar EP16 • Clark ECS20 • Jungheinrich EFG115 2920 Lb.

**121- SCISSORLIFTS:** Genie GS4390 43 Ft 4x4 Rough Terrain • 2011 & 2010 Genie GS3268RT 32 Ft 4x4 • 2011, 2010 & 2009 Genie GS3232 • 5- 2014 Genie GS2632 Electric • Genie 2630ES Electric • 2015 Genie GS1930 Electric • 4- 2013 Genie GS1930 • 2- 2011 Genie GS1930 19 Ft Electric • 21- Genie GS1930 19 Ft Electric • Genie GR20 20 Ft Electric Personnel Lift • 2012 Genie GR15 15 Ft Electric Personnel Lift • 2- Genie GR15 15 Ft Electric



Personnel Lift • Hybrid HB1430 • 2011 JLG 4394RT 43 Ft 4x4 Rough Terrain • 2010 JLG 4069LE • 2011 JLG 3394RT-D Rough Terrain • 3- JLG 3394RT Rough Terrain • JLG 3369LE 33 Ft • 2012 JLG 3246ES • 2011 JLG 3246ES Electric • 2017 JLG GS2669RT • 2010 JLG 2646ES • JLG 2646ES • 2012 JLG 2630ES Electric • 2-2011 JLG 2630ES Electric • 3- 2010 JLG 2630ES 26 Ft Electric • 2- JLG 2630ES • 2- 2014 JLG 2630ES Electric • JLG 2032ES 20 Ft Electric • 2- 2010 JLG 2030ES • JLG 2030ES • JLG 1932E2 19 Ft Electric • 22- 2010 JLG 1930ES 19 Ft Electric • 3- JLG 1930ES 19 Ft Electric • 2- 2014 & 2013 JLG 1930ES • 4- JLG 260MRT Rough Terrain • JLG 40RTS 40 Ft 4x4 Rough Terrain • JLG 33RTS 33 Ft Rough Terrain • 2-Skyjack SJ9250 4x4 Rough Terrain • 2- Skyjack SJ8841RT DF Rough Terrain • Skyjack SJ6832RT Rough Terrain • 2-2013 Skyjack SJIII4632 32 Ft Electric • 2012 Skyjack SJIII3219 19 Ft Electric • 2011 Skyjack SJIII3219 19 Ft Electric.

**212- BOOM LIFTS:** 8-Genie Z135/70 4x4x4 Articulated • 9- Genie S125 4x4x4 • 2- 2014 Genie S85 4x4 • 2011 Genie S85 4x4 • Genie S85 4x4 • 3- Genie Z80/60 4x4x4 Articulated • 3- Genie S80 • 2015 Genie S65 • Genie S65 4x4 • 2012 Genie Z60/34 4x4 Articulated • 3- Genie Z60/34 Articulated • 2013 Genie Z60 Articulated • Genie Z60 Articulated • 5- Genie S60 4x4 • 2014 Genie Z45/25J 4x4 Articulated • Genie Z45/25 Articulated • 2014 Genie Z45 4x4 Articulated • 3- 2015 Genie S45 4x4 • 2014 & 2- 2013 Genie S45 4x4 • 3-Genie S45 4x4 • 7- Genie Z40/23N Articulated • 3- 2015 Genie S40 • 2009 Genie S40 4x4 • 5- Genie S40 • 2- Genie TMZ34/19 Electric Tow Behind Articulated • 2014 Genie GR26J Personnel Lift • 2012 Genie GR20 Personnel Lift • 6- 2010 Genie GR20 20 Ft Electric Personnel Lift • 2012 Genie GR15 Personnel Lift • 2011 Genie GR12 Electric Personnel Lift • Genie GR12 Electric Personnel Lift • 2011 JLG 150HAX Articulating • 2009 JLG 150HAX Articulating • 2- 2010 JLG 1350SJ 4x4x4 • 4- JLG 1350SJ 4x4x4 • JLG 1250AJ • 2- 2014 JLG 1200SJ • 2- 2010 JLG 1200SJ 4x4x4 • JLG 1200SJ • 2010 JLG 860SJ • 2- JLG 860SJ 4x4 • 2- 2014 & 2-2010 & 2009 JLG 800S 4x4 • 9-JLG 800S 4x4 • 2014 JLG 800AJ Articulated • 9- 2010 JLG 800AJ 4x4x4 Articulated • JLG 800AJ 4x4x4 Articulated • JLG 800AJ Articulated • JLG 800A Articulated • 2- 2014 JLG 660SJ • JLG 660SJ • 2- 2015 & 2- 2014 & 2010 JLG 600S • 4- JLG 600S • 2012 & 2-2011 JLG E600JP 4x4 Electric • JLG 600AJ 4x4 • 2014 JLG 600AJ Articulated • 2- JLG 600AJ Articulated • 2- JLG 600A Articulated • 2011 & 2010 JLG T500J Electric Tow Behind Articulated • JLG 460SJ 4X4 • JLG E450A Electric • 2015 JLG 450AJ Articulated • 2011 JLG 450AJ Series II 4x4 Articulated • JLG 450AJ 4x4 Articulated • JLG 450AJ Articulated • 2- JLG 450AJ • 3- JLG 450AJ Series II Articulated • 2- JLG 450A Series II 4x4 Articulated • 7- JLG 400S 4x4 • JLG E400AJPN Electric Articulated • 2010 JLG T350 Tow Behind • 2- JLG E300AJ Electric Articulated • JLG E300AJ Electric Articulated • 2011 JLG 150HAX • 2009 JLG 150HAX Articulating • 2009 JLG 80HX • 2012 JLG 30AM Electric Personnel Lift • 2012 JLG 20MVL Electric Personnel Lift • 2- 2011 JLG 20MVL Electric Personnel Lift • JLG 20MVL Electric Personnel Lift • 3-2011 & 8 2010 JLG 1230ES Electric Personnel Lift • 5- JLG 12SP Personnel Lift • 2012 Skyjack SJ46AJ 4x4 Articulated • Terex TB60 4x4 • Teupen Leo 13GT Crawler.

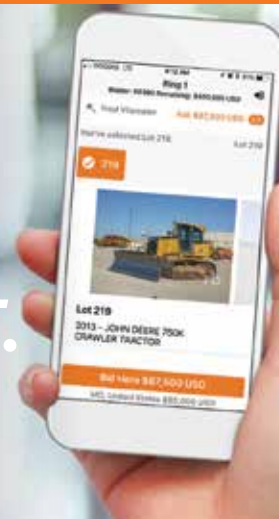
**36- DUMPERS:** Benford 2000DP 4x4 • Benford • Komatsu CD60R-1 Crawler • 2013 Morooka MST2200VD Crawler • 2013 Morooka MST2200VD High Tip Crawler • Morooka MST1500V Crawler • Morooka MST800E Crawler • Morooka MST800 Crawler • Terex 6005CTRA 4x4 • Terex 6005CSF 4x4 Swivel • Terex 6001PTR 4x4 • Terex 3001KF 4x4 • Terex TA6S 6 Ton 4x4 Swivel • 4- Terex TA6S 4x4 Swivel • Terex TA6 6 TON 4X4 • 3- Terex TA6 4x4 • Terex TA3 3 TON 4X4 • Terex TA3 4x4 • 2- Terex Benford 6002 • 2011 Terex Benford TA10 4x4 • Terex Benford TA9 9 TON 4X4 • 2- Terex Benford 6 Ton 4x4 Swivel • Terex Benford 3 Ton 4X4 Swivel • Thwaites 6T 4x4 • 4- Thwaites 6T 4x4 Swivel • Yanmar YFW55R Self-Loading Crawler Dumper.

**64- UTILITY CARTS :** 11- 2015 Bobcat 3400XL 4x4 • 2011 Bobcat 3400GXL • 2012 Bobcat 3400 4x4 • 2- 2013 Club Car XRT1550 • 2- 2013 Club Car XRT1550 4x4 • 2009 Club Car Carryall 2 Electric • Club Car Carryall 6 • 2011 Club Car KZ 4x4 • 5- Club Car • 2015 Cushman 1600XD4 4x4 Vehicle • 2- 2013 Ez Go Hauler 800X • Ez Go MPT Electric • 2011 Ingersoll-Rand 950 XRT 4x4 • Inordskog 232B Electric • 2014 John Deere XUV 550-S4 • 2014 John Deere HPX 4x4 • 2014 John Deere Gator 4x4 • 2013 John Deere Gator HPX 4x4 • 2014 & 3- 2013 John Deere HPX • 2014 & 2012 Kawasaki 4010 • Kawasaki 600 Mule • 2014 & 2013 Kubota RTV1140CPX • Kubota RTV1140 • 2- 2016, 2- 2014 & 2- 2013 Kubota RTV900XT 4x4 • 2- 2013 Kubota RTV900XT • 2013 Kubota RTV900XT 4x4 • Kubota RTV900XT • 2010 Kubota RTV900W • 5- 2014 • 17- 2013, 2012, 5- 2010 & 3- 2009 Kubota RTV900 4x4 • 2010 Kubota RTV900 • 2- Kubota RTV900 Utility Vehicle • 12- Kubota RTV900 4x4 • 7- Kubota RTV900 • 2010 Kubota RTV500 4x4 • 4- 2017 Polaris Ranger 570 4x4 • 2- 2015 Polaris Ranger 570 • 2013 Polaris Ranger 500C • 2- 2013 Polaris Ranger 500 • Polaris Ranger 4x4 XP400 Twin • 3- 2016 Polaris Range ETX • Zhejang Xinyang XY1100UEL 6 Passenger 4x4.

**21- BROOMS:** Broce RJ350 • 2- Broce RC350 • 5- 2015 & 2- 2014 Broce CR350 • 2- Broce 350 • 2- Broce RC300 • Challenger MT345B 4x4 Tractor • Ford 260C Broom Tractor • 2015 Lay-Mor Sweepmaster 300 • Leeboy R848 • 2012 Lee-Boy Challenger V1 • 2015 Rosco 4930 Sweep-Pro • Sweepster 1212 Front Mounted • Waldon Sweepmaster 250.

**ITEMS INCLUDE:** Survey Equipment, Pipeline Equipment, Industrial Plant Equipment, Engines, Crane Accessories, Equipment Attachments, Demolition & Recycling Attachments, Tractors Attachment, Industrial Items, Equipment Parts, Shop & Warehouse Items, Parts / Stationary - Construction & Transportation.

Download the Ritchie Bros. app today!



SEARCH IT.  
FIND IT.  
BID ON IT.

Never miss out on the equipment you need. Search equipment info, locate items in the yard, bid from anywhere in real time, and more – all with the Ritchie Bros. app.

- ▶ Browse tens of thousands of items
- ▶ Search by keyword or equipment type
- ▶ Check detailed equipment information & photos
- ▶ Locate equipment in the auction yard at selected auction sites
- ▶ View live auctions and see what's selling
- ▶ Hear the auctioneers with live streaming audio
- ▶ Bid online in real-time!
- ▶ Smart alerts to track equipment



Download the app today. [rbauction.com/app](http://rbauction.com/app)

PurchaseFlex™ Financing limited-time offer

NO PAYMENTS  
FOR  
**120** DAYS\*

For a limited time only, get the equipment & trucks you need with **PurchaseFlex™ Financing** and enjoy:

- ▶ No payments for the first 120 days\*
- ▶ Fast application, approvals, & purchase flexibility
- ▶ Up to 100% financing with \$0 down
- ▶ Affordable, low monthly payments

Apply today.  
call **1.855.331.7237** or visit [rbauction.com/Flex](http://rbauction.com/Flex)

\*OAC. Terms and conditions apply.

DELIVERING  
CHOICE

**rb** RITCHIE BROS.  
Auctioneers®

**IRON**  
PLANET®

# More Ways Than Ever to Sell Equipment

Ritchie Bros. and IronPlanet have joined together  
to serve you better with more solutions:

**Ritchie Bros. Auctioneers**  
Exciting unreserved live  
auctions with onsite and  
online bidding, access to  
global buyers.

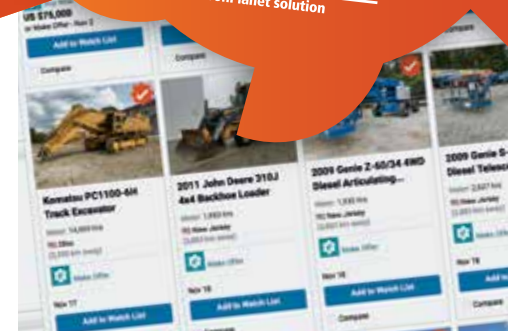
**IronPlanet**  
Weekly online auctions  
helping you buy & sell  
equipment fast, when  
you need it.

**Marketplace<sup>e</sup>**  
Robust selection of  
equipment available  
24/7 through multiple  
buying formats.

Learn more at [RitchieBros.com](http://RitchieBros.com)

**JUST  
LAUNCHED!**  
Buy or sell anytime with a  
convenient **NEW** online platform

**Marketplace<sup>e</sup>**  
An IronPlanet solution



# DAY 2

**February 20, 2018 (Tuesday) 8:00am**  
Listings on page 11–17 inclusive

Notice to bidders: Due to the large number of items for day 2, it will be necessary to conduct two simultaneous rings.

**299** wheel loaders | **127** articulated dump trucks | **59** motor graders  
**11** trenchers | **12** directional drills

**Ring Power**



3 of 7 – 2015 Caterpillar 745C 6x6



2013 CMZ EK125



2011 Caterpillar 120M AWD



2 of 6 – 2015 Caterpillar 906M  
Low meter hours



2010 John Deere 843K



2014 Massey Ferguson MF5613



1 of 2 – 2014 Caterpillar 972M – Located Reserve, LA



1 of 2 – 2015 Caterpillar 950M High Lift



1 of 5 – 2014 Caterpillar 930K



1 of 2 – 2014 Caterpillar 938K



2013 Caterpillar 906H2



1 of 5 – 2013 Caterpillar 938K



1 of 5 – 2012 Caterpillar 950K



2010 Caterpillar 930H



1 of 2 – Caterpillar 930H



1 of 2 – Caterpillar 928G



2013 Hyundai HL740-9



2015 John Deere 844K Series II



2014 John Deere 844K Series II



2012 John Deere 524K



1 of 2 – Kawasaki 90ZV-2



Komatsu WA600-3L



1 of 2 – Komatsu WA480-6



2015 Caterpillar 966M



2009 Volvo L120F



Volvo L220G



1 of 2 – 2013 Caterpillar 140M2 VHP Plus  
Located Baton Rouge, LA



2011 Caterpillar 120M AWD



2011 Caterpillar 12M VHP



Caterpillar 16H



1 of 5 – Caterpillar 12H



John Deere 670D



2009 Mauldin M413XT



Caterpillar 16M VHP



2 of 4 – 2014 Caterpillar 740B 6x6



1 of 7 – 2012 Caterpillar 740B 6x6



1 of 5 – 2015 Caterpillar 730C  
Located Hammond, LA



2010 Caterpillar 740 6x6



2 – Caterpillar 730 6x6



1 of 6 – 2015 Caterpillar 725C 6x6



1 of 2 – 2015 John Deere 410ET 6x6



2012 John Deere 300D Series II 6x6



1 of 7 – 2015 John Deere 250D Series II 6x6



2 – 2012 Terex TA400 6x6  
Located Lakeville, MN



2014 Volvo A35G 6x6



1 of 4 – 2014 Volvo A40G 6x6



1 of 2 – 2011 Volvo A35F 6x6



1 of 4 – Volvo A35E 6x6



Volvo A25E 6x6



5 of 6 – Caterpillar 773B



2011 Caterpillar 773F



Tigercat 718



2013 John Deere 643K



2011 Caterpillar 559B



Tigercat 240B



2010 Geo-Boy 4x4



Fecon FTX440



Terex TA10 4x4



1 of 2 – 2012 John Deere 9460R 4WD



Challenger MT465B



2 of 3 – John Deere 5525



John Deere 437D



2010 New Holland T4050F



John Deere 250D 5000 Gallon 6x6



2014 Comacchio MC22



Soilmec R622HD



McElroy Tracstar 900



# Equipment listings

**299- WHEEL LOADERS:** 2014 Case 1021FXR High Lift • 2- Unused - 2017 Case 821G • 2013 Case 721F • Case 721D • 2014 Case 621F • 2012 & 2011 Case 621E • Case 621D • Case W20B • 3- Case W11 • 2014 Caterpillar 988K • Caterpillar 988F • 2- Caterpillar 988B • 2015 Caterpillar 980M • 2014 Caterpillar 980M • 2013 & 2012 Caterpillar 980K • 2012 Caterpillar 980H Series II • Caterpillar 980H • 3- Caterpillar 980G • Caterpillar 980C • 2- 2015 & 2- 2014 Caterpillar 972M • 2012 Caterpillar 972K • Caterpillar 972G • Caterpillar 972G Series II • 2015 & 2014 Caterpillar 966M • 2- 2014, 2- 2013 & 2012 Caterpillar 966K • 2011 Caterpillar 966H • Caterpillar 966H • 2- Caterpillar 966G Series II • 3- Caterpillar 966G • Caterpillar 966C Inoperable • 2015 Caterpillar 962M • 2012 Caterpillar 962K • Caterpillar 962G • Caterpillar 960F • 4- 2016 Caterpillar 950M • 2- 2015 Caterpillar 950M High Lift • 2014 & 2- 2013 Caterpillar 950K • 2012 Caterpillar 950K High Lift • 4- 2012 Caterpillar 950K • 2010 Caterpillar 950H • Caterpillar 950H • 2- Caterpillar 950G Series II • 2- Caterpillar 950F • 2014, 5- 2013 & 2012 Caterpillar 938K • 2012, 3- 2011 & 2009 Caterpillar 938H • Caterpillar 938G Series II • 7- Caterpillar 938G • 4- Caterpillar 938F • 2015, 5- 2014, 4- 2013 & 2- 2012 Caterpillar 930K • 2010 Caterpillar 930H • 2- Caterpillar 930H • Caterpillar 930G High Lift • 4- Caterpillar 930G • 2- Caterpillar 928G • 2015 Caterpillar 926M • 2015, 3- 2013 & 2012 Caterpillar 924K • 3- Caterpillar 924G • 2- Caterpillar 924F • Caterpillar 920 • 2- Caterpillar 914G • 4- 2016 Caterpillar 908M • 3- 2013 Caterpillar 908H • 2011 Caterpillar 908H • 2017 & 6- 2016 Caterpillar 906M • 2013 Caterpillar 906H2 • 2- Caterpillar 904B • Caterpillar IT28F Integrated Tool Carrier • Caterpillar IT24F Integrated Tool Carrier • Caterpillar IT28G Integrated Tool Carrier • 2010 Doosan DL420 • 2014 Doosan DL300-3 • 2010 Doosan DL250 • Ford A64 • 2013 Hyundai HL740-9 • JCB 436B • 2015 & 2014 John Deere 844K • John Deere 744J • 2011 John Deere 724K • John Deere 724J • 5- John Deere 644J • 2- John Deere 644H • John Deere 644C • 2014, 2- 2013, 2012 & 2009 John Deere 624K • John Deere 624H • 2010 John Deere 544K • John Deere 544J • 2- John Deere 544H • John Deere 544G • 2012 John Deere 524K • John Deere 524K • 2012 John Deere 444K • John Deere 444H • John Deere 304H • John Deere 244J • Kawasaki 115Z • 2- Kawasaki 95ZV • 2- Kawasaki 90ZV • 2- 2014 Kawasaki 80Z7 • Kawasaki 80ZV • 2014 Kawasaki 65ZV-2 • Kawasaki 60Z V • Komatsu WA600-3L • Komatsu WA500-34K • 2- Komatsu WA480-6 • 2- 2013 Komatsu WA470-7 • Komatsu WA430-6 • 2013 Komatsu WA380-7 • Komatsu WA380-6 • Komatsu WA380-5L • 2014 Komatsu WA320-7 • 2- 2013 Komatsu WA320-6 • Komatsu WA320-5L • Komatsu WA320 • 2- Komatsu WA250-5L • 3- Komatsu WA250-5 • Komatsu WA250-3 • Michigan 275B • TCM E806-2 • TCM E806 • Terex 473 4WD • Volvo L220G • 2010 Volvo L220F • 2013 Volvo L220G • Volvo L220E • 2- 2012 Volvo L180G • 2013 Volvo L150G • 2010 Volvo L150F • 3- 2014 Volvo L120H • 2012 Volvo L120G • 2- 2009 Volvo L120F • Volvo L120F • Volvo L120E High Lift • 2014, 2013 & 2012 Volvo L110G • Volvo L110E • 3- 2014, 2013 & 2- 2012 Volvo L90G • 2011 Volvo L90F • Volvo L90F • 4- Volvo L90E • 2014, 2013 & 2- 2012 Volvo L70G • 2012 Volvo L70F • Volvo L70D • 2014 & 2012 Volvo L60G • 2- 2014 Volvo L50G • 2013 Wacker Neuson WL50 • 2- Unused - 2017 Yanmar V8.

**SKID STEER LOADERS:** 6- Unused - 2017 Mattson ML525W Walk Behind.

**16- MULTI TERRAIN LOADERS:** 2014 Bobcat MT55 Walk Behind • 2010 Bobcat MT52 Walk Behind • Boxer TL427 Walk Behind • Ditch Witch SK350 Walk Behind • 6- Unused - 2017 Mattson ML525 Walk Behind • Mertz Brute Protrax Walk Behind • 2011 TORO TX427 Dingo Walk Behind • 2013 Vermeer S800TX Walk Behind • 2012 Vermeer S650TX Walk Behind • 2- Vermeer S600TX Walk Behind.

**59- MOTOR GRADERS:** 2014 Caterpillar 140M3 AWD • 2013 Caterpillar 140M2 • 2013 Caterpillar 140M2 VHP Plus • 2012 Caterpillar 140M2 • 2010 Caterpillar 140M VHP • 2009 Caterpillar 140M • 2009 Caterpillar 140M VHP Plus • Caterpillar 140M AWD • Caterpillar 140H VHP • Caterpillar 140G • Caterpillar 130G MIL • Caterpillar 130G MIL • Caterpillar 130G • 2015 & 2- 2012 Caterpillar 120M2 VHP Plus • 3- 2012 Caterpillar 120M VHP • 2011 Caterpillar 120M AWD • 2011 Caterpillar 120M VHP • 2010 Caterpillar 120M AWD • 2009 Caterpillar 120M • 2- Caterpillar 120H • 2- Caterpillar 16M • Caterpillar 16M VHP • Caterpillar 16H • Caterpillar 16G • Caterpillar 14M • 2011 & 2009 Caterpillar 12M VHP • 5- Caterpillar 12H • 3- Caterpillar 12G • Caterpillar 12E • Champion 710A Series V • Fiatallis 65 • Galion T600 • Galion A600 • John Deere 672B AWD • John Deere 670D • John Deere 670C Series II • John Deere 670 • John Deere 570B • John Deere 570A • 2009 Mauldin M413XT Maintainer • PSI MG618 • Volvo G946 AWD • 2012 Volvo G930B • Komatsu GD655 • Lee-Boy 685.

**MOTOR SCRAPERS:** 2- Caterpillar 613C Elevating • Caterpillar 613B Elevating.

**127- ARTICULATED DUMP TRUCKS:** 2013 & 2- 2015 Caterpillar 745C 6x6 • 4- 2014, 2- 2013, 7- 2012 & 2011 Caterpillar 740B 6x6 • 2- 2011 & 2010 Caterpillar 740 6x6 • 2- Caterpillar 740 6X6 • 2011 Caterpillar 735B • 3- Caterpillar 735 6x6 • 5- 2015 Caterpillar 730C 6x6 • 2013 & 2012 Caterpillar 730 6x6 • 2- Caterpillar 730 6x6 • 6- 2015 Caterpillar 725C 6x6 • 2014 & 2013 Caterpillar 725 6x6 • 2013 Caterpillar 725 TG 6x6 • 2011 Caterpillar 725 6x6 • Caterpillar 725 6x6 • 3- Caterpillar D400E 6x6 • Caterpillar D350E • Caterpillar D250E • Caterpillar D250E Series II • 2013 Hydrema 922HM 6x6 • 2- 2015 Hydrema 912HM 4x4 • 4- 2015 John Deere 460ET 6x6 • 3- 2016, 2- 2015, 3- 2013 & 2- 2012 John Deere 410ET 6x6 • 2012 John Deere 300D Series II 6x6 • 2- John Deere 300D 6x6 • 7- 2015, 2014 & 2013 John Deere 250D Series II 6x6 • 2- John Deere 250D 6x6 • Linkbelt 135 • 2- 2012 Terex TA400 6x6 • 2013 Terex TA250 6x6 • 2015 Volvo A40G 4x4 • 2015 & 4- 2014 Volvo A40G 6x6 • 2014, 2013 & 2011 Volvo A40F 6x6 • 2010 Volvo A40E 6x6 • Volvo A40D 6x6 • 2014 Volvo A35G 6x6 • 2014, 2013 & 2- 2011 Volvo A35F 6x6 • 2- Volvo A35F 6x6 • 2009 Volvo A35E 6x6 • 4- Volvo A35E 6x6 • Volvo A35D 6x6 • Volvo A30D • Volvo A30D 6x6 • Volvo A30C 6x6 • 2- Volvo A25E 6x6 • Volvo A25C 6x6 • JCB 718 • 2012 Komatsu HM300-3.

**22- WATER WAGONS:** Caterpillar 740 6x6 • Caterpillar 730 6x6 • Caterpillar 725 6000 Gallon 6x6 • Caterpillar 725 6x6 • Caterpillar 615C 6500 Gallon • Caterpillar 613C Series II 5001 Gallon

• Caterpillar 613C Series II • 2- Caterpillar 613C • Caterpillar 613 • Caterpillar D400E 5000 Gallon 6x6 • Caterpillar D250E 5000 Gallon 6x6 • Caterpillar D250E • John Deere 250D 5000 Gallon 6x6 • Terex 4066C 8000 Gallon • Terex TA40 6x6 • Volvo A35C 6x6 • Volvo A30D 6x6 • Volvo A30D 6000 Gallon 6x6 • 2- Volvo A25D 6x6.

**11- ROCK TRUCKS:** Caterpillar 777F • 2- 2011 Caterpillar 773F • 2- Caterpillar 777F • 5- Caterpillar 773B • Caterpillar 769C.

**11- CABLE PLOWS:** Delta DT150C Crawler • 4- Ditch Witch 255SX Walk Behind • 5- Ditch Witch 255SX Walk Behind • 2010 Vermeer RTX750 Crawler Cable Layer.

**11- TRENCHERS:** 2012 Barretto 1324ST Walk Behind Rubber-Tired • Ditch Witch 6510DD • Ditch Witch 3700DD Ride On • Ditch Witch 410SXC Walk Behind Trencher/Cable Plow • 2010 Ditch Witch RT45 4x4 • 2011 Ditch Witch RT12 Walk Behind • Vermeer V5750 Rubber-Tired • Vermeer 655DT Crawler • 2013 Vermeer RTX250 Walk Behind • 2011 Vermeer RTX100 Walk Behind Rubber-Tired • Vermeer RT100 Walk Behind.

**12- DIRECTIONAL DRILLS:** 2009 Ditch Witch JT3020 Mach 1 • 2014 Ditch Witch JT25 Crawler • Vermeer D100X120 • Vermeer D36X50 Series II • Vermeer D33X44 • Vermeer D33X44 Crawler • 2014 Vermeer 24x40 Series II Crawler • Vermeer 24x40 Series II Crawler • Vermeer D24X26 • Vermeer D20X22-2 Series II • 2013 Vermeer D9X13 Navigator Series II Crawler • 2011 Vermeer D9X13 Series II.

**FELLER BUNCHERS:** 2010 John Deere 843K • John Deere 843K • John Deere 843H • 2013 John Deere 643K • 2015 Prentice 2470C • Tigercat 720D • Tigercat 718.

**LOG LOADERS:** 2014 Caterpillar 559C • 2011 Caterpillar 559B • Caterpillar 559 • 2014 John Deere 437D • John Deere 437D Trailer Mounted • Tigercat 240B.

**SKIDDERS:** 2014 Caterpillar 545C • 2015 Caterpillar 535D • 2015 Caterpillar 525D • 2013 John Deere 748H.

**17- ENVIRONMENTAL EQUIPMENT:** Cherrington 500 Beach & Sand Scrubber • Fecon FTX440 Crawler Mulcher • 2014 Fecon FTX128 72 In. Crawler Mulcher • 2010 Geo-Boy 4x4 Mulcher • LOR 3680 Portable Horizontal Grinder • Rayco RG1635 Walk Behind Stump Grinder • Smoracy 4680 Portable Horizontal Grinder • Vermeer BC1800XL Portable Chipper • 2012 Vermeer BC1500 portable Chipper • Vermeer BC1400 Portable Brush Chipper • Vermeer BC600XL 6 In. S/A Tow Behind Chipper • 4- Vermeer SC252 Walk Behind Stump Grinder • 2- 2011 Woodsman 430 Chipper.

**FUEL & LUBE TRUCKS:** Terex TA10 4x4 Articulated.

**VACUUM TRAILERS:** Ditch Witch FX30S Hydro Vac Trailer.

**EQUIPMENT TRAILERS:** Ditch Witch T9B 5 Ton 13 Ft x 6 Ft 2 In. T/A Utility.

**TRAILERS:** 2015 Pitts D50 Log Loader Trailer .

**16- MOBILE STRUCTURES:** 3- Unused - Portable Restroom • 13- Unused - Suihe Portable Restroom .

**4WD AGRICULTURAL TRACTORS:** 2- 2012 John Deere 9460R • 2012 John Deere 9560R Auto Load Scraper Special 4WD Tractor.

**BELTED AGRICULTURAL TRACTORS:** 2- Case IH 540 Quadtrac.

**19- MFWD AGRICULTURAL TRACTORS:** Challenger MT535B MFWD Tractor • Challenger MT525B MFWD Tractor • Challenger MT465B MFWD Tractor • John Deere 8530 MFWD Tractor • 2- 2014 John Deere 8345R MFWD Tractor • 2- John Deere 7210 MFWD Tractor • 2011 John Deere 7130 MFWD Tractor • John Deere 6430 MFWD Tractor • John Deere 6405 MFWD Tractor • John Deere 5525N MFWD Tractor • John Deere 5500 MFWD Tractor • John Deere 5425 MFWD Tractor • John Deere 5400 MFWD Tractor • Kubota M6040D MFWD Tractor • 2014 Massey Ferguson MF5613 MFWD Tractor • 2010 New Holland T4050F MFWD Tractor • New Holland TN95FA MFWD Tractor.

**2WD AGRICULTURAL TRACTORS:** John Deere 5525N 2WD Tractor • John Deere 5525N 2WD Tractor • John Deere 2350 2WD Tractor • Mahindra E350 DI 2WD Tractor • Farmall Cub Antique 2WD Tractor • Ford 3910 2WD Tractor • Massey Ferguson 20F 2WD Tractor.

**UTILITY TRACTORS:** Farm Pro 2425 • John Deere 5220 • 2012 John Deere 3032E • John Deere 4120 MFWD • 2013 & 2012 Kubota BX25D 4WD.

**14- PULL SCRAPERS:** 3- E-Ject E45 Series 3 45 CY Ejector • 4- E-Ject SC22-2T-BRAKES 22 CY Ejector • Grademaster • Icon 819 • 2- 2014 John Deere 1810E • K-Tec 3100 Pull Scraper • Reynolds 14C.

**10- DRILLS:** 2013 CMZ EK125 Crawler Hydraulic Foundation • 2014 Comacchio MC22 • Furukawa HCR12EDS Crawler • 2014 Hutte HBR502-2 Crawler Hydraulic • IMT AF280 • 2011 IMT AF240CFA • IMT AF240CFA • Ingersoll-Rand ECM660 III Crawler • Soilmec R622HD Crawler Hydraulic • Tamrock Ranger 700-2 Crawler Rock.

**PIPELINE EQUIPMENT:** McElroy Tracstar 900 Crawler Fusion Machine • McElroy Trackstar 500 Crawler Fusion Machine • McElroy Tracstar 412 Crawler Fusion Machine • 2009 McElroy 412 Fusion Machine • McElroy 28 2-8 Electric Pipe Fusion Machine • McElroy Trackstar 25/28 Crawler Fusion Machine • 2- McElroy HDPE Fusion Machine • McElroy Crawler Fusion Machine.

**DRILL PARTS & ACCESSORIES:** B&D 748 Portable Core Drill • Cusco 3000 Gallon Roll Off Vacuum System • Hayward Baker 95883 Custombuilt Drill • Hayward Baker SPDR2TP46P Drill Mast • Mc Laughlin MCL-20 Auger • Tse 2501PLW 4 Reel Wire Puller • Vermeer DT750 Skid Mounted Mud Mixing System.

**ITEM INCLUDE:** Containers • Equipment Attachments • Industrial • Shop & Warehouse • Parts / Stationary - Construction.

# DAY 3

February 21, 2018 (Wednesday) 8:00am  
Listings & photos on page 18–29 inclusive

Notice to bidders: Due to the large number of items for day 3, it will be necessary to conduct two simultaneous rings.

222 crawler tractors | 122 cranes | 97 asphalt pavers  
427 compaction equipment | 14 asphalt distributor trucks



1 of 2 – Manitowoc 2250 300 Ton



2012 Caterpillar D8T – Located Hope Mills, NC



Peterbilt 357 w/National 14127H 33 Ton



2012 Wirtgen WR2000XL



2012 Kolberg Pioneer FT4240 40 x 42 In.



2014 Volvo P7110



2015 Caterpillar CS66B



2 of 3 – Caterpillar 572G



Caterpillar D8T



Caterpillar D7R XR Series II



2013 Caterpillar D7E



1 of 5 – 2014 Caterpillar D6T LGP



1 of 5 – 2012 Caterpillar D6T LGP



1 of 5 – 2012 Caterpillar D6N LGP



Caterpillar D6T XL



1 of 5 – 2014 Caterpillar D6T LGP



2013 Caterpillar D6T XW



2 of 7 – 2015 Caterpillar D6N LGP



1 of 5 – 2014 Caterpillar D6N LGP



2011 Caterpillar D6N XL



2009 Caterpillar D6N LGP



Caterpillar D6N



1 of 3 – 2015 Caterpillar D6K2 LGP



2011 Caterpillar D6K LGP



2011 Caterpillar D6K XL



2016 Caterpillar D5K2 LGP



1 of 2 – 2015 Caterpillar D4K2 LGP



1 of 2 – 2011 Caterpillar D6K XL



1 of 2 – 2010 Caterpillar D3K XL



1 of 2 – Caterpillar D5K



1 of 2 – 2014 John Deere 650K



John Deere 750J LT



Caterpillar 963C



Link-Belt ATC822 22 Ton 4x4x4



Grove RT760E 60 Ton 4x4x4



2013 Grove RT9130E-2 130 Ton 4x4x4



1 of 3 – Grove RT9130E 130 Ton 4x4x4



Terex T775 75 Ton



1 of 2 – 2010 Grove RT890E 90 Ton 4x4x4



2 – Grove RT875E



1 of 2 – Grove RT875C 75 Ton 4x4x4



Terex RT780 80 Ton 4x4x4



Grove RT740 40 Ton 4x4x4  
Located Spokane Valley, WA



Link-Belt HTC8660 Series II 60 Ton



Grove RT700E 60 Ton 4x4x4



Grove RT65S 35 Ton 4x4x4  
Located East Syracuse, NY



2 – 2010 Link-Belt RTC8030 Series II 30 Ton 4x4x4



1 of 2 – Unused – 2014 Terex T340-1 40 Ton 6x4



P&H W350 35 Ton 4x4x4  
Located Spokane Valley, WA



2 – Terex RT555-1 55 Ton 4x4x4



1 of 2 – Terex RT230 30 Ton 4x4x4  
Located Wixom, MI



Terex RT175 75 Ton 4x4x4



2 of 4 – Terex LRT110 7.5 Ton 4x4



Manitowoc 14000 220 Ton Series II



Manitowoc 3900W Series II Vicor 100 Ton



Manitowoc 2250 Series 1, 2 & 3 300 Ton



Manitowoc 999 275 Ton



1 of 2 - Manitowoc 222 100 Ton



DCI C2540 40 Ton



1 of 2 - Shuttlelift 3330ELB 8.5 Ton



2009 Shuttlelift 7755 22 Ton 4x4x4



1 of 2 - Broderson IC200-3F



1 of 2 - 2012 Caterpillar CP56B



2012 Caterpillar CP44



1 of 2 - 2015 Caterpillar CS56B



2011 Hamm 3307



2015, 2014 & 2013 XCMG CV122





2015, 2014 & 2013 XCMG CV122



2012 Dynapac CA250D II



1 of 5 - 2015 Caterpillar CB24B



2012 Caterpillar CB64



Caterpillar CB534DXW



2009 Bomag BW190AD4AM



2010 Hamm HD120VV HF



2017 Sakai SW850 II - Low meter hours



1 of 2 - 2012 Volvo DD118HF



Volvo DD138HF



Unused - 2016 Dynapac LP8504



1 of 3 - 2012 Caterpillar AP1000E



1 of 2 - Caterpillar AP1055D



International 7400 2000 Gallon



Peterbilt 335 1500 Gallon



2014 Wirtgen W210i



2012 Terex MS4



2016 Weiler W530 – Low meter hours



Bomag MPH100S



Extac C12 30 x 48 In.



Terex Pegson XA400 26 x 44 In.



2015 Komplete LEM TRACK 4825 24 x 19 In.  
Low meter hours



Tesab 1412T



2011 Metso Nordberg DS303MV  
Located Greenville, NC



2010 Superior 36 x 136 Ft – Located Greenville, NC



1 of 2 – 2018 Xrok 6036T 36 x In. 60 Ft



2012 Trackstack 8042T 42 In. x 80 Ft



2009 Freightliner M2112V w/National 900H



2009 International 4300 w/National 571E2 18 Ton



Trackmobile Titan

## Equipment listings

**PIPELAYERS:** 3- Caterpillar 572G Crawler • 2- Caterpillar 561D Crawler • Caterpillar 561C Crawler • Caterpillar D4D Crawler.

**TACK TRACTORS:** Caterpillar D6D.

**222- CRAWLER TRACTORS:** Case 850K XLT Series 2 • Case 850H • Case 650K • 2011 Caterpillar D9T • 2012 & 2011 Caterpillar D8T • 3- Caterpillar D8T • Caterpillar D8R Series II • 2- Caterpillar D8N • Caterpillar D8K • Caterpillar D7R XR Series II • Caterpillar D7K • Caterpillar D7H • Caterpillar D7H Military • 2- Caterpillar D7G • 2013 & 2011 Caterpillar D7E • 2013, 2012 & 2- 2011 Caterpillar D7E LGP • 2016 Caterpillar D6T • 3- 2015 Caterpillar D6T LGP • 2- 2014 Caterpillar D6T XL • 5- 2014 & 2013 Caterpillar D6T LGP • 2013 Caterpillar D6T XL • 2013 Caterpillar D6T XW • 8- 2012 Caterpillar D6T LGP • 2011 Caterpillar D6T • 2- 2011 Caterpillar D6T LGP • 2012 & 2011 Caterpillar D6T XL • 2011 Caterpillar D6T XW • 2010 Caterpillar D6T LGP • 2009 Caterpillar D6T • Caterpillar D6T LGP • 2011 Caterpillar D6T XL • Caterpillar D6T XL • Caterpillar D6R LGP • Caterpillar D6R LGP Series III • Caterpillar D6R XW Series II • Caterpillar D6R XW Series III • 2015 Caterpillar D6N XL • 2016, 8- 2015, 2- 2014 & 2012 Caterpillar D6N LGP • 2014 Caterpillar D6N XL • 3- 2014, 4- 2013 & 4- 2012 Caterpillar D6N LGP • 2011 Caterpillar D6N XL • 2- 2011 & 2009 Caterpillar D6N LGP • Caterpillar D6N • 6- Caterpillar D6N LGP • 3- Caterpillar D6N XL • 2016, 3- 2015 & 4- 2014 Caterpillar D6K2 LGP • 2011 Caterpillar D6K LGP • 2- 2011 Caterpillar D6K XL • 2010 Caterpillar D6K LGP • 2009 Caterpillar D6K XL • Caterpillar D6K • Caterpillar D6K XL • 3- Caterpillar D6K LGP • Caterpillar D6C • Caterpillar D5N XL • Caterpillar D5N LGP • 2016, 5- 2015 & 2014 Caterpillar D5K2 LGP • 2014 Caterpillar D5K2 XL • 2- 2014 & 2013 Caterpillar D5K2 LGP • 2013 Caterpillar D5K2 XL • 2012 Caterpillar D5K2 LGP • 2- 2013 Caterpillar D5K • 2012 & 2- 2010 Caterpillar D5K LGP • Caterpillar D5K XL • 2- Caterpillar D5K LGP • Caterpillar D5G XL • 6- Caterpillar D5G LGP • 2- 2015 & 2014 Caterpillar D4K2 LGP • 3- Caterpillar D4G LGP • Caterpillar D4G • Caterpillar D4G XL • 2012 Caterpillar D3K2 LGP • Caterpillar D3K2 LGP • 2014 Caterpillar D3K LGP • 2011 & 2- 2010 Caterpillar D3K XL • 4- Caterpillar D3G LGP • Caterpillar D3G XL • 2- Caterpillar D3C LGP Series III • Caterpillar D3C • 2- Caterpillar D3B • 2010 John Deere 850J LGP • 2015 John Deere 750K • John Deere 750J LT • John Deere 750C LGP • 2014 John Deere 700K LGP • 2011 John Deere 700J LGP • John Deere 700J XLT • 2- 2014 John Deere 650K • 2- 2013 John Deere 650K LGP • 2012 & 2010 John Deere 650J LGP • John Deere 650J LGP • 2015 John Deere 450J • 2015, 2012 & 2011 John Deere 450J LGP • 2012 John Deere 450J LT • John Deere 450J • 2- John Deere 450J LGP • John Deere 400G • 2012 Komatsu D375A-6 • 2014 Komatsu D275AX-5EO • 2- Komatsu D155AX-6 • 2016 Komatsu D85EX-15 • 2013 Komatsu D65EX-18 • 2013 Komatsu D65EX-17 • Komatsu D65E-7 • Komatsu D65E-6 • 2010 Komatsu D61PX-15EO • 2- Komatsu D61PX-15EO • Komatsu D61PX • Komatsu D61EX-15 • 2010 Komatsu D51PX-22 • Komatsu D41P • Komatsu D31PX-21 • Komatsu D31P20.

**CRAWLER LOADERS:** Caterpillar 963D • 2- Caterpillar 963C LGP • 3- Caterpillar 963C • Caterpillar 953C • John Deere 755C.

**ALL TERRAIN CRANES:** Demag AC100L 120 Ton • Grove AT422 22 Ton 4x4 • Liebherr LTM1120 • Link-Belt ATC822 22 Ton 4x4x4 • Tadano ATF1000XL-1 100 Ton • Tadano ATF1000XL 100 Ton 8x8x8 • Tadano ATF650XL 65 Ton 8x8x8.

**62- ROUGH TERRAIN CRANES:** 2011 Grove RT9150E 150 Ton 4x4x4 • 2013 Grove RT9130E-2 130 Ton 4x4x4 • 2011 Grove RT9130E 4X4X4 • 2010 Grove RT9130E 130 Ton 4x4x4 • 3- Grove RT9130E 130 Ton 4x4x4 • 2010 Grove RT890E 90 Ton • 2010 & 2- 2009 Grove RT890E 90 Ton 4x4x4 • 2- Grove RT875E • Grove RT875C 75 ton • Grove RT875C 75 Ton 4x4x4 • 2- Grove RT855C 55 ton • Grove RT760E 60 Ton 4x4x4 • Grove RT750 • Grove RT745E 45 Ton 4x4x4 • Grove RT745 45 Ton • Grove RT745 45 Ton 4x4x4 • Grove RT745 50 Ton • Grove RT740B • Grove RT740 • Grove RT740 40 Ton 4x4x4 • Grove RT730B • 2009 Grove RT700E 60 Ton 4x4x4 • Grove RT700E 60 Ton 4x4x4 • Grove RT635 35 Ton 4x4x4 • Grove RT630B • Grove RT522 • Grove RT522 30 Ton • Grove RT65S 35 Ton • Grove RT58D 15 Ton 4x4x4 • Grove RT48MC 7.5 Ton • Link-Belt RTC8090 Series 2 90 Ton 4x4x4 • 2- Link-Belt HSP8050 50 Ton 4x4x4 • 2- 2010 Link-Belt RTC8030 Series II 30 Ton 4x4x4 • Lorain LRT275 27.5 ton • P & H W350 35 Ton 4x4x4 • P & H Century 65 65 Ton 4x4x4 • Terex RT1000 100 Ton 4x4x4 • 2013 Terex RT780 • Terex RT780 80 Ton 4x4x4 • 2012 Terex RT670 • 2- Terex RT555-1 55 Ton 4x4x4 • 2013 Terex RT555 • 2- Terex RT555 55 Ton 4x4x4 • Terex RT450 50 Ton 4x4x4 • 2014 Terex RT230XL • Terex RT230 • 2- Terex RT230 30 Ton 4x4x4 • Terex RT175 75 Ton 4x4x4 • 2- Terex LRT110 7.5 Ton 4x4 • 2- Terex LRT110 7.5 Ton 4x4x4.

**HYDRAULIC TRUCK CRANES:** 2- Grove TMS760E 60 Ton 8x4x4 • Grove TMS185A 18 Ton 6x6 • Link-Belt HTC8660 Series II 60 Ton • Terex T775 75 Ton • 2- 2014 Terex T340-1 40 Ton 6x4 • Terex T340 • Terex T340 40 Ton T/A • Terex T335.

**CONVENTIONAL TRUCK CRANES:** American 7450 80 Ton • American 4460 45 ton • Ford F550.

**24- CRAWLER CRANES:** DCI C2540 40 Ton • Kobelco 7200 200 Ton Self-Erecting • Kobelco CKE2500 250 Ton Self-Erecting • Kobelco CK1000 100 Ton • Link-Belt LS238H 150 Ton Self-Erecting • Link-Belt LS138H • Link-Belt LS78 17.5 Ton • Manitowoc 16000 440 Ton Self-Erecting • 2009 Manitowoc 14000 220 Ton Self-Erecting • Manitowoc 14000 Series 2 220 Ton Self-Erecting • 2- Manitowoc 14000 220 Ton Self-Erecting • Manitowoc 3900W Series II Vicon 100 Ton • 2009 Manitowoc 2250 Series 1 • 2 & 3 300 Ton Self-Erecti • Manitowoc 2250 Series 1 • 2 & 3 300 Ton Self-Erecti • 2- Manitowoc 2250 300 Ton Self-Erecting • Manitowoc 999 275 Ton Self-Erecting • Manitowoc 777 200 Ton • 2- Manitowoc 222 100 ton • Sumitomo LS118 50 Ton • 2009 Terex HC165 • Terex HC80.

**15- CRANES:** Broderson IC200-3F 8 Ton 4x4x4 Carry Deck Crane • 2- Broderson IC200-3F 15 Ton 4x4x4 Carry Deck Crane • Broderson IC200-2F 15 Ton 4x4x4 Carry Deck Crane • Broderson RT80-3C 7.5 Ton 4x4 Carry Deck Crane • Broderson IC80-3G Carry Deck Crane • Broderson IC80-3E Carry Deck Crane • Broderson IC80-2D Carry Deck Crane • Grove AP410 10 Ton Carry Deck Crane • Grove IND-24 6 Ton Carry Deck Crane • 2009 Shuttlelift 7755 22 TON 4x4x4 Carry Deck Crane • Shuttlelift 5560RT 18 Ton 4x4 Carry Deck Crane • Shuttlelift 5540F 15 Ton 4x4x4 Carry Deck Crane • 2- Shuttlelift 3330ELB 8.5 Ton Carry Deck Crane.

**VIBRATORY PADFOOT COMPACTORS:** 2- 2012 Caterpillar CP56B • Caterpillar CP433E • 2012 Caterpillar CP44 • Dresser VOSD66A • 2014 Volvo SD75F • Dynapac CA250PD • Ingersoll-Rand SD116TF • Ingersoll-Rand SD77F.

**83- VIBRATORY SMOOTH DRUM ROLLERS:** 2012 Bomag BW219DH-4 • Bomag BW211D-40 • Unused - 2017 Bomag BW177D-5 • Bomag BW177 • Bomag BW174AD-2 • Bomag BW120AD-2 • Unused - 2017 Case CA255 • 2- Caterpillar CS563E

- 2009 Caterpillar CS563 • 2- 2010 Caterpillar CS76 • 2010 Caterpillar CS74 • 2- 2016, 2015 & 2014 Caterpillar CS66B • 2012 Caterpillar CS64 • 2- Caterpillar CS533E • 2- 2015 & 2012 Caterpillar CS56B • 6- 2009 Caterpillar CS56 • 2010 Caterpillar CS54 • 2- Caterpillar CS54 • 2010 Caterpillar CB54 • 2012 Caterpillar CS44 • 2011 Dynapac CC1300 • 3- Unused - 2017 Dynapac CA255 • 2012 Dynapac CA250D II • 2015 Dynapac CA150D • Dynapac CA134D • Dynapac CS12 • 2- Hamm 3410 • 2011 Hamm 3307 • Hamm 3307 • Hamm 2420D • Unused - 2016 & 2- 2016 Hamm H13i • 2016 Hamm H5i • Ingersoll Rand SD100D • Ingersoll-Rand SD122DXTF • 2- Ingersoll-Rand SD110D • Ingersoll-Rand SD100D ProPac • Ingersoll-Rand SD100 • Ingersoll-Rand SD45DTF • 2012 Multi Quip • stone • Sakai SW850 Super HF • Sakai SV505 • 2010 Volvo SD122DX • 2014 Volvo SD75D • 2- 2012 Volvo SD70D • 3- 2012 Volvo SD45D • 2- 2014 XCMG CV122PDU • 2- 2015 & 2- 2014 XCMG CV122PD • 4- 2014 & 2- 2013 XCMG CV122 • XCMG CV122 Vibratory Roller.

**87- TANDEM ROLLERS:** 3- 2013 Ammann ARX26 Vibratory • 2013 Ammann ARX12 Vibratory • 2009 Bomag BW190AD-4AM Vibratory • 2- Unused - 2017 & 2013 Bomag BW120AD-5 • Bomag BW120AD-3 Vibratory • Bomag BW120AD-2 Vibratory • Bomag BW120AD Vibratory • Bomag/Hypac C778B Vibratory • 2010 Case DV213 Vibratory • 2011 Case DV210 Vibratory • Caterpillar CB564D Vibratory • Caterpillar CB564D Versa-Vibe Vibratory • Caterpillar CB534DXW Versa Vibe Vibratory • 2- Caterpillar CB534DXW • 2- Caterpillar CB534DXW Versa Vibe Vibratory • 2- Caterpillar CB534C Vibratory • Caterpillar CB534B Vibratory • Caterpillar CB434D Vibratory • 4- Caterpillar CB224E Vibratory • 2013 Caterpillar CB54XW Vibratory • 2013 & 2- 2012 Caterpillar CB54B • 2012 & 2011 Caterpillar CB54 • 2- 2011 Caterpillar CB54 Vibratory • 2015 Caterpillar CB34B XW Vibratory • 2015 Caterpillar CB34 • 2013 Caterpillar CB32 • 5- 2013 Caterpillar CB32 Vibratory • 2010 Caterpillar CC24 Vibratory • 2012 Caterpillar CB24XT • 5- 2015 Caterpillar CB24B • 2014 Caterpillar CB24B LRC Vibratory • 3- 2011 & 2010 Caterpillar CB24 • 2013 Caterpillar CB22 Vibratory • 2015 Caterpillar CB14B • 2015 Caterpillar CB14 • 2014 Dynapac CC1300 Vibratory • Dynapac CC900 • 8- Unused - 2017 Dynapac CC800 • 2011 Dynapac CC384HF Vibratory • Dynapac CC142 Vibratory • 2011 Hamm HD140 Vibratory • 2010 Hamm HD120VV HF Vibratory • 2011 Hamm HD120V • Hamm HD120V • Unused - 2017 Hamm HD14VV • 3- 2012 & 2009 Hamm HD14VV Vibratory • Hamm HD14VV Vibratory • 5- Unused - 2017 Hamm HD12VV Vibratory • 4- Hamm HD12VV Vibratory • 2- 2012 Hamm HD10CVV Vibratory • 5- Unused - 2017 Hamm HD8VV • Hypac • 2013 & 2012 JCB VMT260-120 Vibratory • Ingersoll-Rand DD34HF Vibratory • JCB VMT260-120 Vibratory • 2009 JCB VMT160-80 Vibratory • Lee-Boy 400 Vibratory • 6- Unused - 2017 Roadway RWYL42A Vibratory • 2017 Sakai SW850 II Vibratory • 2013 Sakai CR271 Vibratory • Stone Wolfpac P6100 Vibratory • Volvo DD138HF Vibratory • 2015 & 2- 2014 Volvo DD120B Vibratory • 2- 2012 Volvo DD118HF Vibratory • 2015 Volvo DD110B Vibratory • 2010 Volvo DD29 Vibratory • 2014 Volvo DD25W Vibratory • Wacker RD11A Vibratory • Rosco Trupac 915.

**ROLLERS:** 2010 Case PT240 8 Wheel Pneumatic • Caterpillar PF300B 7-Wheel Roller • Caterpillar PS150B 9 Wheel Pneumatic • Caterpillar PS130 • 2- Ingersoll Rand PT125R 9 Wheel Pneumatic • Hypac C530A • 2- Hyster C530A • Leeboy 420 9 Wheel Pneumatic • 2013 Volvo PT125 • Bomag BW9AS.

**97- ASPHALT PAVERS:** Blaw Knox PF161 Pneumatic • 2- Blaw-Knox PF5510 Crawler • Blaw-Knox PF4410 Crawler • Blaw-Knox PF510

Crawler • Blaw-Knox PF3172 Pneumatic • Bomag 4410 Crawler • 2013 Caterpillar AP1055E Crawler • 2- 2011 & 2009 Caterpillar AP1055D Crawler • Caterpillar AP1055D • 4- Caterpillar AP1055D Crawler • 4- Caterpillar AP1055B Crawler • 3- 2012 & 2010 Caterpillar AP1000E Pneumatic • 2009 Caterpillar AP1000D Pneumatic • Caterpillar AP1000D Pneumatic • Caterpillar AP1000B Pneumatic • Caterpillar AP1000 Pneumatic • 3- Caterpillar AP800D Pneumatic • Caterpillar AP800C Pneumatic • 2011 Caterpillar AP655D Crawler • Caterpillar AP655C Crawler • Caterpillar AP650B Crawler • Cedarapids CR351 Pneumatic • Champion 1010 Pneumatic • Gehl 1438 Crawler • Ingersoll-Rand PF5510 Crawler • 2- Ingersoll-Rand PF3200 Pneumatic • Ingersoll-Rand 780W Pneumatic • Lee L8500T • 2013 Leeboy 8515C Crawler • 2013 Lee-Boy 8616 Crawler • 2014 Leeboy 8510C Crawler • 2011 Leeboy 8500B Crawler • 2015 • 2013 & 2012 Lee-Boy 8616B Crawler • Lee-Boy L8515T Crawler • Lee-Boy L8515R • 2013 Lee-Boy 8515C • 2010 Lee-Boy 8515B • Lee-Boy 8515 • Lee-Boy L8510R Crawler • 2010 Lee-Boy 8510HD • 2014 Lee-Boy 8510C Crawler • 2012 Lee-Boy 8510B Crawler • Lee-Boy L8500T • Lee-Boy L8500T Crawler • Lee-Boy 8000R • 2- Lee-Boy L7000T Crawler • Lee-Boy L5000T Pathmaster Crawler • Lee-Boy L1000D Crawler • Lee-Boy 1000C • Lee-Boy 1000C Crawler • 2011 Roadtec RP190 Pneumatic • 5- Roadtec RP185-8 Crawler • 2- Roadtec RP185-10 Crawler • Roadtec RP180-10 Pneumatic • 2- Roadtec RP170 Pneumatic • 2009 Voegele Vision 5100-2 Crawler • Voegele 2116T Crawler • Voegele 1110WB Pneumatic • Voegele 780WB Pneumatic • 2014 Volvo P7110 Crawler • 2013 Weiler P385.

**14- ASPHALT DISTRIBUTOR TRUCKS:** Chevrolet Kodiak 2000 Gallon • Ford L9000 2000 Gallon S/A • Ford L8000 1500 Gallon S/A • Ford F800 • Ford F800 2000 Gallon S/A • Ford F800 1330 Gallon S/A • Ford F750 • Ford F750 1600 Gallon S/A • Freightliner 1950 Gallon • Freightliner FL70 2000 Gallon • International 7400 2000 Gallon S/A • International 4700 S/A • 2010 International 4300SBA • Peterbilt 335 1573 Gallon S/A • Sterling Acterra.

**PAVEMENT PROFILERS:** 2010 Roadtec RX700-4 • Roadtec RX700-3 • 2009 Roadtec RX500-3 Profiler • Roadtec RX60 • Roadtec RX60B Crawler • Roadtec RX50B • Roadtec RX45B Crawler • Roadtec RX25 • 2009 Roadtec • Wirtgen W2000 Crawler • 2014 Wirtgen W210i • 2009 Wirtgen W50.

**ASPHALT EQUIPMENT:** Caterpillar AS4252C Screed • 2- Voegele Hopper • 2016 Garlock Ram 150DDN Portable Rubberized Melter • Garlock Ram 150DDN Portable Rubberized Melter • Ingersoll Rand HT250 S/A Portable Hot Tack Sprayer • 2012 Seal-Rite SR1500 Skid Mounted Asphalt Applicator .

**MATERIAL TRANSFER UNIT:** Roadtec SB2500B Shuttle Buggy • Roadtec SB2500 Shuttle Buggy. Caterpillar AS2301 Screed • 2- Roadtec SB2500 4x4 Shuttle Buggy • Roadtec SB1500B Asphalt Shuttle Buggy • Rosco Sprh-H Chip Spreader • 2012 Terex MS4 Portable Shuttle Buggy • Volvo Omni 1000 Screed .

**CONCRETE PAVERS:** Gomaco GT6200 Crawler Curb Machine • Power Curbers 5700 Super B Crawler Curb & Gutter Machine • Power Curbers 5700B Crawler Curb & Gutter Machine.

**ROAD WIDENERS:** Blaw-Knox RW795 • Blaw-Knox RW100A • Blaw-Knox RW195H • 2016 Weiler W530.

**PULVERIZERS & MIXERS:** Bomag MPH100S • Caterpillar SS250 4x4x4 Soil Stabilizer • 2012 Wirtgen WR2000XL Soil Stabilizer.

**ENVIRONMENTAL EQUIPMENT:** 2009 Finn B70-38 Straw Blower.

**JAW CRUSHERS:** Extac C12 30 In. x 48 In. Crawler • 2013 Klee-mann & Reiner MC110Z 27 In. x 43 In. Crawler • 2015 Komplete

LEM TRACK 4825 24 In. x 19 In. Crawler • McLanahan 1036 3 Ft 36 In. • 2013 Powerscreen Premiertrak PR400 28 In. x 44 In. Crawler • Terex Pegson AX400 26 In. x 44 In. Crawler • 2014 R.R. Equipment Co Rebel 36 In. x 24 In. Crawler.

**IMPACT CRUSHERS:** 2012 Kolberg Pioneer FT4240 Crawler • Metso Lokotrack LT1213 Crawler • Metso Lokotrack 1213 Crawler • 2011 Metso NP1110 Portable • Tesab 1412T.

**SCREEN PLANTS:** 2- 5 x 7 Ft Screen • 2014 McCloskey S130-3D 5 x 14 Ft 2 Deck Crawler • 2011 Metso/Nordberg DS303MV • 2011 Doppstadt SM1200 Portable • 2014 Keestrack Frontier 6 x 15 Ft 2 Deck Crawler • Metso Lokotrack ST620 Crawler • MGL 3630 5 x 11 Ft Screen • 2015 Terex Finlay 683 Supertrak 5 x 12 Ft 2 Deck Crawler.

**FEEDERS:** Superior 4 Ft x 11 Ft Hopper.

**38- CONVEYORS:** 3- S/A Radial Stacking • 8- Unused - Better BE3660C 36 In. x 60 Ft Portable Radial Stacking • 2018 & 5- Unused - 2018 Ezystak W5032 32 In. x 50 Ft Portable Radial Stacking • Hill Tops A3660E 36 In. x 60 Ft • Hill Tops A3650E 36 In. x 50 Ft Portable • 2011 KPI 113060 30 In. x 60 Ft Portable Stacking • 2- Unused - 2018 Powerstak RS8532 32 In. X 85 Ft Portable Radial Stacking Conveyor • 4- Unused - 2018 Super 36 In. x 60 Ft Portable • 2- Super 3660 36 In. x 50 Ft Portable • 2010 Superior 36 In. x 136 Ft Telescopic Portable Radial Stacking • 2012 Trackstack 8042T 42 In. x 80 Ft Crawler Stacking • 2- Unused - 2018 Krok 6036T 36 In. x 60 Ft Crawler Stacking • 6- Unused - 2017 Krok 4030E 30 In. x 40 Ft Portable Radial Stacking.

**14- AGGREGATE EQUIPMENT:** 14- Unused - 2018 Eriez CP20/80SC2 30 In. x 6 Ft 6 In. Magnet.

**BOOM TRUCKS:** Chevrolet Topkick T/A w/Weldco HL18T85 17.5 Ton • Ford F800 w/JLG 800BT 8 Ton • 2009 Freightliner M2 Business Class T/A w/National 900H • International 4700 BT1700 17 Ton • 2009 International 4300 T/A w/National 571E2 18 Ton • International 4300 S/A w/Magnum 100 • Peterbilt 357 Tri/A w/National 1400H 32 Ton • Freightliner w/Palfinger Crane • Peterbilt

378 w/Manitex 2892S 28 Ton • Sterling LT7500 T/A w/Manitex 2892C 28 Ton.

**ASPHALT TRAILERS:** Lee Boy 250T Asphalt Tank.

**13- UTILITY CART:** 2013 Kubota RTV900XT 4x4 • 2- 2014 Kubota RTV-X900 4x4 • 2013 Kubota RTV900 • 3- 2013 Kubota RTV900 4x4 • 2010 Kubota RTV900 • 2010 & 2009 Kubota RTV900 4x4 • 2- Kubota RTV900 4x4 • Kubota RTV500 4x4.

**BARGES:** 2- Robshaw S70 Quadrafloat.

**10- CONCRETE PUMPS:** 2013 & Unused - 2013 CHEMGROUT Skid Mounted Grout Pump • Mayco LS40 5 In. Portable • 2013 Putzmeister ESA2112D Skid Mounted • 2014 Putzmeister BSA2112D Skid Mounted • 2011 Putzmeister TBS130 126 Ft Tri/A • 2011 Putzmeister BSS70-516H Portable • 2011 Putzmeister TK40 Portable • Putzmeister P30 • 2012 Putzmeister SP11BMB Portable Grout Pump.

**MINING EQUIPMENT:** 2012 Brookville 1544TC 15 Man Personnel Carrier • 2012 Brookville 15 Man Personnel Carrier.

**RAILROAD EQUIPMENT:** Trackmobile Titan Rail Car Mover.

**11- PILE HAMMERS:** APE D25-32 Diesel • APE D19-42 Diesel • Birmingham 3505 • Conmaco Air Hammer Converted to 50 • 000 Ft/Lb Drop Hammer • ICE 815 Pile Driver Extractor • ICE 812 Pile Driver Extractor • ICE 120S Diesel • ICE 70S • MKT V5 Vibratory • Pileco D30/32 • Pileco D19/42.

**CRANE ACCESSORIES:** Qty of Lifting Eyes.

**ITEMS INCLUDE:** Equipment Attachments • Tractor Attachments • Industrial • Walk Behind Compactors • Concrete Equipment • Discs • Mowers • Haying Equipment • Sprayers & Spreader Equipment • Sewer & Water • Shop & Warehouse Items



## BUYING EQUIPMENT FOR USE OUTSIDE THE USA?

### ANOTHER LOCATION TO MAKE IT EASY

Select equipment in this auction, that cannot be used in the USA, is located at Port Tampa Bay Foreign Trade Zone – making it easier for you to buy and ship the equipment you need:

- ▶ Port Tampa Bay (Foreign Trade Zone)
- Phone 863.420.9919 to arrange an inspection

Bid in person at our Orlando auction site, via your mobile device with the Ritchie Bros. app, or online at [rbauction.com](http://rbauction.com). If you're going to be unavailable to bid during the live auction, place an online preBid or call us to place a proxy bid.

For more information, call 863.420.9919 or visit

[rbauction.com/orlando2018](http://rbauction.com/orlando2018)



PORT TAMPA BAY.

# DAY 4

**February 22, 2018 (Thursday) 8:00am**  
**Listings & photos on page 30–37 inclusive**

Notice to bidders: Due to the large number of items for day 4, it will be necessary to conduct two simultaneous rings.

**336 excavators | 95 midi excavators | 125 mini excavators**  
**127 dump trucks | 54 mixer trucks | 113 water trucks | 61 mechanics trucks**  
**30 utility trucks**



**KELLY TRACTOR**

2014 Caterpillar 390FL



2 – 2011 Caterpillar M316D 4x4



2 of 12 – 2011 Mack GU813 Granite



Peterbilt 335



2016 Western Star 4700SF – Low mileage



2014 Freightliner 108SD



1 of 5 – 2013 International 4300SBA



Unused – 2016 Caterpillar 336FLN UHD & Unused – 2016 Caterpillar 330FLN UHD



2010 Hitachi ZX350LC3UHD



1 of 5 – 2012 Caterpillar 349E



2015 Caterpillar 349FL



1 of 2 – 2014 Caterpillar 336ELH



2016 Caterpillar 330FL



1 of 5 – Caterpillar 330CL



1 of 6 – 2012 Caterpillar 329EL  
Located Rochester, NY



1 of 4 – 2013 Caterpillar 324EL



2016 Caterpillar 323FL



1 of 4 – Caterpillar 320DL



1 of 2 – Caterpillar 320CL



2017 Liugong CLG922E



1 of 2 – 2011 Caterpillar 315DL  
Located Rochester, NY



2 of 3 – 2015 Caterpillar 312E



2013 Hitachi ZX160LC-5B



2012 Hitachi ZX225USRL



2013 Hyundai Robex 145LCR-9



2011 Hyundai Robex 160LC-9



2012 Kobelco SK235SRLC



2011 Kobelco SK260-9



1 of 2 - 2011 Komatsu PC450LC-8



1 of 3 - Komatsu PC400LC-7



1 of 2 - 2014 Komatsu PC360LC-10



1 of 5 - 2012 Komatsu PC360LC-10



2014 Komatsu PC290LC-10 Long Reach



2014 Komatsu PC290LC-10



2011 Komatsu PC270LC-8



1 of 2 - 2014 Komatsu PC240LC-10





1 of 2 – 2014 Komatsu PC210LC-10



2013 Komatsu PC160LC-8



1 of 2 – 2014 Volvo EC250DL



Sennebogen 835



1 of 2 – 2011 Caterpillar M316D 4x4



2017 Bobcat E85



1 of 2 – 2015 & 1 of 2 – 2013 Caterpillar 308E2CR



2016 Caterpillar 307E2



2012 Caterpillar 305ECR



2016 Kubota KX080-4



2014 Bobcat E35



2016 John Deere 60G – Low meter hours



1 of 7 – 2015 John Deere 220D



2014 Bomag BC772



2009 Mack GU713



**Mack CV713 Granite**



**2013 Kenworth T800B**



**2015 Peterbilt 365**



**2 of 3 – 2013 Peterbilt 365**



**Western Star 4964F**



**2 of 4 – 2015 Caterpillar CT660S**



**2 – 2014 Caterpillar CT681SG**



**1 of 4 – Mack RD688S**



**2 – 2015 Kenworth T880**



**2014 Ford F550 XL**



**1 of 2 – Freightliner M2106**



**2012 International 4400**



**1 of 14 – International 5600i**



**Mack MR688S  
w/Schwing BPL1200HDR23 KVM 28X**



**2013 Ford F750 2000 Gallon**



1 of 2 – 2015 International 4300 2000 Gallon



International 5600i 6000 Gallon



2009 Peterbilt 340 4000 Gallon



1 of 3 – Peterbilt 335 4000 Gallon



Peterbilt 330 4000 Gallon



Peterbilt 378



2014 Caterpillar CT660



1 of 2 – GMC C4500



International 4400



Mack GU713 Granite



2017 Ford F550 4x4 w/IMT 3820



2016 Ford F550 XL 4x4 w/Stellar 7621



2015 Ford F550 XL w/Currey 7621



2014 Ford F550 XL w/Autocrane 6406H



2010 Freightliner M2 w/Liftmoore 2525X-17



Freightliner M2 w/Stellar



GMC C5500 4x4



2010 International 4300 4x4



2013 Caterpillar CT660S



International 4300



Kenworth T800



2 of 12 - Chevrolet 2500



1 of 2 - 2017 Freightliner MM106042S



Freightliner M2112 Business Class



1 of 3 - Sterling SC8000



2011 Putzmeister TK40 - Low meter hours



2011 Putzmeister BSS70-516H

## Equipment listings

**DEMOLITION EXCAVATORS:** Caterpillar 350L-UHD Long Reach • 2016 Caterpillar 336FLN UHD • 2016 Caterpillar 330FLN UHD • 2010 Hitachi ZX350LC3UHD Hi Reach • Komatsu PC350HLD Hi Reach.

**336- HYDRAULIC EXCAVATORS:** Caterpillar 375L • 2014 Caterpillar 390FL • 2015 & 2014 Caterpillar 349FL • 2014, 2013 & 2012 Caterpillar 349EL • 2012 Caterpillar 349EL Long Reach • 4- 2012 & 2011 Caterpillar 349EL • Caterpillar 345BL Series II • Unused - 2016 • 3- 2015 & 3- 2014 Caterpillar 336FL • 2- 2014 & 2013 Caterpillar 336ELH • 2- 2014, 9- 2013, 12- 2012 & 2011 Caterpillar 336EL • Caterpillar 330L • 2016 Caterpillar 330FL • 3- Caterpillar 330DL • 5- Caterpillar 330CL • 2015, 2014, 2- 2013 & 6- 2012 Caterpillar 329EL • 2011 Caterpillar 329DL • 2- 2014 Caterpillar 328DLR • Caterpillar 328D CR • 2015 Caterpillar 326FL • Caterpillar 325L • 2- Caterpillar 325CL Long Reach • Caterpillar 325BL Long Reach • 2014 Caterpillar 324ELLR • 4- 2013 & 3- 2012 Caterpillar 324EL • 2016 & 2- 2015 Caterpillar 323FL • Caterpillar 322CL • 2014 & 2- 2011 Caterpillar 321DLR • Caterpillar 320L • 2017 Caterpillar 320FL • 2014 Caterpillar 320EL Long Reach • 3- 2014 • 7- 2013 & 10- 2012 Caterpillar 320EL • 2011 Caterpillar 320DLR • Caterpillar 320DLRR • 2- 2010 Caterpillar 320DL • 4- Caterpillar 320DL • 2009 3200DLR Marsh Buggy Excavator • 2- Caterpillar 320CL Marsh Buggy Excavator • 4- Caterpillar 320CL • 2012 Caterpillar 316EL • Caterpillar 315L • 2012 & 2- 2011 Caterpillar 315DL • 2- Caterpillar 315CL • Caterpillar 315BL • 2013 Caterpillar 314ELCR • 2011 Caterpillar 314DLR • 2010 Caterpillar 314DLR • Caterpillar 314CLCR • 2- Caterpillar 314CCR • 2- Caterpillar 314C • 2011 Caterpillar 313DCR • Caterpillar 313CSR • 3- 2013 & 2- 2012 Caterpillar 312EL • 3- 2015 • 4- 2014 & 2012 Caterpillar 312E • 2- 2011 Caterpillar 312DL • 2011 Caterpillar 312D • Caterpillar 312CL

• 2016 & 2- 2014 Caterpillar 311FLRR • 2014 Caterpillar 311FL • 3- Caterpillar 311CU • 2014 Doosan DX235LCR • 2013 Doosan DX225LC-3 • 2010 Doosan DX180LC • Unused - 2017 Doosan DX140LCR-5 • 2013 Doosan DX140LCR • 2014 Doosan DX140LC-3 • 2011 Hitachi ZX350LC-3 • 2012 Hitachi ZX225USRL • 2014 Hitachi ZX180LC-5B • Hitachi ZX180LC-3 • 2011 Hitachi ZX180LC • 2013 Hitachi ZX160LC-5B • Hitachi EX160LC-5 • Hitachi ZX160LC • Hitachi EX160LC • 2016 Hitachi ZX135US-5B • 2011 Hyundai Robex 160LC-9 • 2012 Hyundai Robex 145LCR-9 • John Deere 490E • John Deere 450C LC • 2012 John Deere 350G • 2011 John Deere 350D LC • 2- 2014 & 2012 John Deere 290G LC • 2015 John Deere 250G • 2013 & 2012 John Deere 250G LC • 2011 John Deere 250G LC Long Reach • 3- 2015 John Deere 245G • John Deere 230C LC • John Deere 230C LC • 2012 John Deere 225D LC • 2014 & 2012 John Deere 210G LC • 2014 John Deere 210G LC • 2009 John Deere 200DL • 2012 John Deere 200D LC • John Deere 180C • 2- 2013 John Deere 130G • 2012 John Deere 120D • 2012 Kobelco SK350-9 • 2011 Kobelco SK260-9 Long Reach • Kobelco SK250LC • Kobelco SK250 LC Long Reach • Kobelco SK235SRLC-1 • 2012 Kobelco SK235SRLC • 2012 Kobelco SK210LC-9 • Kobelco SK210LC • 2012 Kobelco SK210-9 • 2012 Kobelco SK210-8 • Kobelco SK200LC • 2015 Kobelco SK140SRLC-3 • 3- 2015 & 2- 2014 Kobelco SK140SR-3 • 2011 Kobelco SK140SR • 2014 Kobelco SK140SKLC-3 • Komatsu PC600LC-8 • 2015 Komatsu PC490LC-11 • 2014, 2013 & 2012 Komatsu PC490LC-10 • 2- 2011 & 2- 2010 Komatsu PC450LC-8 • 3- Komatsu PC400LC-5 • 2015 Komatsu PC390LC • 2- 2014 & 5- 2012 Komatsu PC360LC-10 • 2- Komatsu PC308USLC-3 • 2- Komatsu PC300LC-7L • Komatsu PC300LC-7 • Komatsu PC300LC-6 • Komatsu PC300LC-5LC • Komatsu PC300LC-5 • Komatsu PC300-6LE • Komatsu PC300-6 • 2014 Komatsu PC290LC-10 LR Long Reach • 2014 Komatsu PC290LC-10 • 2011 Komatsu PC270LC-8 • 2- 2014 & 2012 Komatsu PC240LC-10 • Komatsu PC228USLC-3E0 • Komatsu PC228USLC-3 • 2- Komatsu PC220LC-8 • 2- 2014 Komatsu PC210LC-10 • 2- 2012 & 2011 Komatsu PC200LC-8 • Komatsu PC200LC-3 • Komatsu PC180 LC-7E0 • 2014 Komatsu PC170LC-10 • 2013 & 2010 Komatsu PC160LC-8 • 2- Komatsu PC160LC-7KA • 2012 Komatsu PC138USLC-8 • 2010 Komatsu

PC138US-8 • 2016 Komatsu PC138US-11 • 2- 2015 & 2014 Komatsu PC138US-10 • 2011 Komatsu PC130LC-8 • Komatsu PC128US-2 • Link-Belt 330LX • Link-Belt 160X2 • 2017 Liugong CLG922E • Samsung SE210LC • 2015 Volvo EC480EL • 2013 Volvo EC380DL • 2- Volvo EC360LC • 2012 Volvo EC340DL • 2009 Volvo EC330CL • Volvo EC330BLC • 2012 Volvo EC300DLR Long Reach • 2014 & 2012 Volvo EC300DL • Volvo EC290BLC Long Reach • 2- 2014 & 2013 Volvo EC250DL • 2012 Volvo EC250 Long Reach • Volvo EC240LR Long Reach • 2013 Volvo EC220DL • Volvo EC220DL • 2013 Volvo EC160DL • 2011 Volvo EC160CL • 2- 2013 XCMG XE210C.

**MATERIAL HANDLERS:** Liebherr A944 • Sennebogen 835 • 2012 Terex MHL350 • 2- 2013 Terex/Fuchs MHL360.

**15- MOBILE EXCAVATORS:** Badger 666 6x6 • 2- Caterpillar M318D 4x4 • 2- 2011 Caterpillar M316D 4x4 • Caterpillar M316C 4x4 • 2011 Caterpillar M315D • Gradall XL4100 • Gradall XL4100 6X4 • Gradall XL3300 • Gradall XL3100 • Liebherr A922 4x4 • Unused - 2017 Takeuchi TB295W • 2017 Takeuchi TB295W 4x4 • Volvo EW180B.

**95- MIDI EXCAVATORS:** Bobcat 341D • 2015 Bobcat E85EM • Unused - 2017, 2016, 2015, 2014 & Unused - 2014 Bobcat E85 • 2010 Bobcat E80 • 3- Unused - 2017 Bobcat E62 • Unused - 2017 & 2012 Bobcat E45 • Case CX50B • 2012 Caterpillar 308ECRSB • 2013 & 2012 Caterpillar 308ECR • 2- 2016 • 5- 2014 & 2013 Caterpillar 308E2CRSB • 2- 2016, 2- 2015, 7- 2014 & 2- 2013 Caterpillar 308E2CR • 2012 & 2- 2011 Caterpillar 308DCCR • Caterpillar 308DCCR • 5- Caterpillar 308CCR • 2016 Caterpillar 307E2 • 2011 Caterpillar 307D • 2- 2014 & 2012 Caterpillar 305E2CR • 2016 & 2- 2015 Caterpillar 305E2CR • 2012 Caterpillar 305D • Caterpillar 305C CR Midi Excavator • Caterpillar 305CCR • 2014 & 2013 Caterpillar 305.5ECR • 2015 Caterpillar 305.5E2CR • 2- 2015 Caterpillar 305.5E2CR Mini Excavator • 2012 Caterpillar 305.5D CR • 2014 Caterpillar 304E2CR • 2013 Hitachi ZX85USB-5 • 2011 Hyundai Robex 55-9 • 3- 2013 & 2- 2012 IHI 55VX-3 • 2013 • 2- 2012 & 2010 John Deere 85D • 2016 John Deere 60G Mini Excavator • 2011 John Deere 60D Mini Excavator • John Deere 50D • 2- Komatsu PC78MR-6 • Komatsu PC75UU-2 • 2015 Komatsu PC55MR-3 • Unused - 2016 & 2014 Kubota KX080-4 • Takeuchi TB180FR • Takeuchi TB175 • 2- 2012 Volvo ECR88 • 2- Volvo ECR88 • 2013 & 2012 Volvo ECR58 • 3- 2012 Volvo EC55C.

**125- MINI EXCAVATORS:** Bobcat 425 • 2011 Bobcat 418 • Bobcat 322 • 2013 & 2012 Bobcat E45EM • Bobcat E42 • 2013 & 2012 Bobcat E35M • 2014 Bobcat E35 • Bobcat E35 • 2014 Bobcat E32 • 2015 & 2014 Bobcat E26EM • 2014 Bobcat E26 • 2015 & 2014 Bobcat E25EM • Caterpillar 305CCR • 2- 2014 Caterpillar 304E2CR • 2015 Caterpillar 304E2CR • 2012 Caterpillar 304DCCR • 2010 Caterpillar 304CCR • 2- Caterpillar 304CCR • 2015 Caterpillar 303E2CR • 3- Caterpillar 303CR • 2- Caterpillar 303CCR • 2- 2014 & 2- 2013 Caterpillar 303.5E2CR • 2015 Caterpillar 301.7DCCR • 2010 Caterpillar 301.6C • Caterpillar 301.6 • Ditch Witch MX272 • 2010 IHI 35N-3 • 3- 2011 IHI 30VX3 • 2- 2010 IHI 30VX • 2013 John Deere 50G • 2- 2013 John Deere 35D • 3- 2012 John Deere 35D • 7- 2015, 7- 2013 & 2012 John Deere 27D • 2009 John Deere 27D • 2- 2015 John Deere 26G • 2011 John Deere 17D • Komatsu PC50MR2 • 2012 & 2009 Komatsu PC35MR-3 • Komatsu PC35MR-2 • Komatsu PC27MRX • 2012 Komatsu PC27MR-3 • 2012 Komatsu PC27MR-3 • Kubota KX91-2 • 2013 Kubota KX41-3 • 2013 Kubota U17 • 2013 Takeuchi TB235 • 3- Takeuchi TB135 • 2012 Takeuchi TB016 • 2013 Terex TC29 • 2013 Terex TC16 • Terex HR16 • Vermeer CX218 • 2016 Volvo ECR40D • 2- 2013 Volvo ECR38 • 4- 2012 Volvo ECR38 • 2013 & 3- 2012 Volvo EC35C • 2013 & 2- 2012 Volvo ECR28 • 2011 Volvo EC27C • 2- 2012 Volvo EC20C • 2013 & 2012 Wacker Neuson 803 • 2013 Wacker Neuson 38Z3 • Wacker Neuson 28Z3RD • Yanmar V1027 • 2012 & 2011 Yanmar SV081A.

**COMPACTORS:** 2014 Bomag BC772.

**127- DUMP TRUCKS:** Autocar Tri/A • 2015 & 2- 2014 Caterpillar CT681SG T/A • 4- 2015 & 2014 Caterpillar CT660S T/A • 2013 Caterpillar CT660 Tri/A • Ford LTL9000 Tri/A • Ford LTA9000 Tri/A • Ford LTA9000 Aeromax Tri/A • Ford LTL9000 T/A • 2013 Ford F750 S/A • 2- Ford F750 S/A • 2- Ford F650 S/A • 2014 Ford F550 XL S/A • 2011 Ford F450 Crew Cab XL S/A • 2010 Freightliner M2106 S/A • Freightliner M2106 S/A • Freightliner FLD120SD Tri/A • Freightliner M2 S/A • GMC 7500 S/A • International 7500 Tri/A • 2009 International 7400 T/A • International 7400 T/A • International 5900I Paystar T/A • 2010 International 5900 S/A • International 4900 Crew Cab S/A • 2014 International 4400 S/A • 2014 International 4400 T/A • 2012 & 2009 International 4400 S/A • International 4400 S/A • International 4300 S/A • International 4300 T/A • International 4200SBA S/A • 2- 2013 International Tri/A • 2009 Isuzu NPR-HD COE Crew Cab S/A • 2015 Kenworth T880 T/A • 2015 Kenworth T880 T/A • 2013 Kenworth T800B Tri/A • 2016 Kenworth T800 Tri/A • 2- 2012 Kenworth T800 S/A • Kenworth T800 T/A • Kenworth T600 Tri/A • 2- Kenworth T450 T/A • Mack RD6886 Tri/A • Mack RD6885 Tri/A • 2012 & 2009 Mack GU713 Tri/A • 3- Mack Granite CV713 Tri/A • Mack CV713 T/A • Mack CV713 Granite T/A • 3- Mack CV713 Granite Tri/A • 9- Mack CV713 Tri/A • Mack CTP713 Tri/A • Mack CT713 T/A • 3- Mack RD690S T/A • 2- Mack RD688S Tri/A • 4- Mack RD688S T/A • 2010 Mack CXU612 Pinnacle T/A • 2011 Mack CU612 Tri/A • 2015 & 3- 2013 Peterbilt 365 Tri/A • Peterbilt 357 Tri/A • Peterbilt 335 T/A • Sterling LT9513 Tri/A • Sterling LT9500 Tri/A • 2- Sterling LT8500 Tri/A • Sterling L8500 Tri/A • 3- Volvo VNL Tri/A • Western Star 4964F Tri/A • 3- Western Star 4900FA T/A • 2- Western Star 4900 Tri/A • 2016 Western Star 4700SF Tri/A.

**54- MIXER TRUCKS:** 2- Advance Terex 6x6 Front Discharge • International 5600I 6x4 • 10- International 5600I T/A • 4- Kenworth W900 T/A • Kenworth T800 T/A • 12- 2011 Mack GU813 Granite T/A • Mack CV713 T/A • Mack RD690S T/A • 2- Mack DM690S T/A • Mack CV513 T/A • Oshkosh S Series 6x6 Front Discharge • Sterling LT9500 T/A • Terex/Advance 6x6 Front Discharge • Volvo VHD T/A • 12- Volvo VHD.

**CONCRETE PUMP TRUCKS:** Mack MR688S COE T/A w/Schwing BPL1200 HDR23 KVM • Mack MR688S COE T/A w/Schwing BPL2023-4 KVM 34M • Mack MR688S COE T/A w/Schwing KVM34M • Mack MR688S w/Concord 40M • Mack MR688S w/Schwing BPL2023-4 KVM 32M • 2009 Mack MRU613 COE 14x8x8 w/Putzmeister BSF6320H.

**113- WATER TRUCKS:** 2012 Caterpillar CT660S 3000 Gallon T/A • Ford LT9000 • Ford 8000 4000 Gallon T/A • 2013 Ford F750 2000 Gallon • 2009 Ford F750 XL 2000 Gallon • Ford F750

2000 Gallon • Ford F750 XL 2000 Gallon • 3- Ford F750 2000 Gallon S/A • Ford F600G • 2010 Freightliner M2106 4000 Gallon T/A • Freightliner M2106 5000 Gallon T/A • Freightliner FLD120 4000 Gallon T/A • Freightliner FL80 4000 Gallon T/A • Freightliner FL80 T/A • Freightliner FL70 2000 Gallon S/A • 2012 Freightliner M2 4000 Gallon T/A • Freightliner M2 Business Class 5000 Gallon T/A • GMC C7500 2000 Gallon S/A • GMC C6500 2000 Gallon S/A • GMC Brigadier 4000 Gallon T/A • Hino 338 S/A • International 9370 4000 Gallon T/A • International 9200I 4000 Gallon T/A • International 8100 2500 Gallon S/A • International 7600SFA 2400 Gallon S/A • 2012 International 7600 4000 Gallon T/A • 2- International 7600 5000 Gallon T/A • 2009 International 7300 3500 Gallon S/A • International 7300 2000 Gallon 4x4 • International 5600I 5500 Gallon 6x6 • International 5600I 5500 Gallon T/A • International 5600i 6000 Gallon T/A • International 4800 2000 Gallon S/A • 2014 International 4400 4000 Gallon T/A • 2011 International 4400 DuraStar 2000 Gallon S/A • 2- 2011 & 2- 2009 International 4400 4000 Gallon T/A • International 4400 2300 Gallon • International 4400 3500 Gallon • 9- International 4400 4000 Gallon T/A • 2015 International 4300 2000 Gallon • 2015 • 5- 2013 • 9- 2012 • 2- 2011 & 2010 International 4300 2000 Gallon S/A • 3- International 4300 2000 Gallon S/A • 5- International 4300 2500 Gallon S/A • International 4200 4000 Gallon S/A • International F2574 3500 Gallon T/A • 2013 International ProStar+ S/A • 2016 Kenworth T440 5000 Gallon T/A • 2010 Kenworth T300 4000 Gallon T/A • Kenworth T300 2000 Gallon S/A • Kenworth T300 4000 Gallon T/A • Kenworth T300 4500 Gallon T/A • Mack CV713 Granite 3000 Gallon T/A • Mack CV713 Granite 4000 Gallon T/A • Mack CTP713 4000 Gallon T/A • Mack RD690S 4000 Gallon T/A • Mack RD688S 4000 Gallon T/A • Mack CXN613 4000 Gallon T/A • Mack CXN613 Vision 4000 Gallon T/A • Mack CX613 3000 Gallon T/A • Mack CX613 4000 Gallon T/A • Peterbilt 387 • Peterbilt 357 4000 Gallon • 2009 Peterbilt 340 4000 Gallon T/A • Peterbilt PB335 4000 Gallon T/A • 3- Peterbilt 335 4000 Gallon T/A • Peterbilt 330 4000 Gallon T/A • Sterling LT9500 4000 Gallon T/A • Sterling A9500 4000 Gallon T/A • 2009 Sterling LT8500 4000 Gallon T/A • Sterling L8500 2500 Gallon • Sterling LT7500 4000 Gallon T/A • 2- Sterling 2000 Gallon • Zeligson 2958 4000 Gallon T/A.

**TANK TRUCKS:** Mack CH613 4500 Gallon T/A Fuel • 2010 Peterbilt 348 T/A • Sterling A9500 5000 Gallon T/A.

**STONE SLINGER TRUCKS:** Peterbilt 378 Tri/A Stone Slinger Truck • Volvo-GM WG T/A Stone Slinger Truck.

**11- VACUUM TRUCKS:** Ford LNT8000 • Ford F700 S/A Hydro Vac • Freightliner FL112 4500 Gallon T/A • 2014 Freightliner 108SD T/A Jetter • International 4900 68 Barrel T/A • 2- International F2674 T/A • International 2674 T/A • International 2554 • Mack CV713 Granite Tri/A • Sterling LT7501 Vaccon • Sterling L9100 10000 PSI S/A Hydro Blaster Truck.

**25- FUEL & LUBE TRUCKS:** 2014 Caterpillar CT660 T/A • Ford F800 S/A • 2009 Ford F750 XL • 3- Ford F750 S/A • 2- Ford F750 XL • Ford F650XL XL • Freightliner M2106 Business Class • 2016 Freightliner M2 • GMC C7500 • 3-GMC C6500 S/A • 2- GMC C4500 4x4 • International 4400 SBA • Kenworth T300 S/A • Kenworth T/A • Mack GU713 Granite T/A • Peterbilt 335 • Peterbilt 330 Lube Truck • Sterling LT8513 • Sterling Aceterra.

**61- MECHANICS TRUCKS:** Chevrolet 3500HD • Chevrolet 2500HD Service • 2012 Dodge 5500 4x4 • 2010 Dodge 5500HD 4x4 • 2012 & 2011 Ford F750 XLT S/A • Ford F750 Extended Cab S/A • Ford F750 S/A • Ford F750 S/A Service • Ford F750 XLT S/A • 2013 Ford F650 S/A • Ford F650 S/A • 2- Ford F650 XL S/A • 2017 Ford F550 Extended Cab 4x4 • 2016 Ford F550 XL 4x4 • 2015 Ford F550 XL • 2014 Ford F550 4x4 • 2014 Ford F550 XL • 2013 & 2012 Ford F550 4x4 • 2011 Ford F550 4x4 • 2011 Ford F550 XL • 2011 Ford F550 XL Extended Cab 4x4 • 2009 Ford F550 XL • 3- Ford F550 XL • 2- Ford F550 XL 4x4 • 3- Ford F550 4x4 • 2013 Ford F450 XL Extended Cab 4x4 • 2011 Ford F450 • 2009 Ford F450 4x4 • Ford F450 • Ford F450 4x4 • 2011 Ford F350 • Ford F350 XL • Ford F250 4x4 • Freightliner Sprinter 3500 Tire • 2010 Freightliner M2 Crew Cab S/A • 2- Freightliner M2 S/A • GMC C5500 4x4 • GMC C4500 4x4 • International 4700 S/A • 2010 International 4300 Crew Cab 4x4 • 2009 International 4300 Durastar S/A • 2013 International Terrastar S/A • Kenworth T370 S/A • 4- Kenworth T300 S/A • 2- Peterbilt 335 • 2- Peterbilt 335 S/A • 2012 Ram Crew Cab • 2- Sterling Acterra S/A • Sterling Acterra S/A Tire Truck..

**30- UTILITY TRUCKS:** 2014 Ram 4500 Crew Cab 4x4 • 2013 Chevrolet 2500HD Extended Cab • Chevrolet 2500HD Crew Cab • Chevrolet 2500HD Crew Cab 4x4 • 3- Chevrolet 2500HD • 10- Chevrolet 2500 • Ford F750XL S/A Reel Truck • 2010 Ford F550 Crew Cab 4x4 • 2009 Ford F550 XL • 2- Ford F450 • Ford F350 XL Crew Cab 4x4 • Ford F350 Crew Cab • Ford F350 XL • Ford F350 XL Extended Cab • Ford F250 • Ford F250 XL • 2010 Freightliner M2 • 2012 GMC 3500HD.

**12- ROLLBACK TRUCKS:** 2013 Caterpillar CT660S T/A • Chevrolet C3500 S/A • Ford F750 XLT • 3- Ford F650 XLT • 2012 Freightliner M2106 T/A • International 4700 • International 4300SBA S/A • Kenworth T800 • 2013 Mack GU533 • Sterling Acterra.

**SANITATION TRUCKS:** Autocar WX64 Xpeditor COE T/A Front Loader • 2- 2017 & 2- 2016 Freightliner MM106042S S/A • 2011 International 4300 S/A • 2011 International Terrastar S/A • Whitegmc WX COE T/A Front Loader.

**10- ROLLOFF TRUCKS:** Freightliner M2112 T/A • 2- International 7600 T/A • International 5900I T/A • 2011 Kenworth T800 T/A • Mack CL713 • Mack RD688S Tri/A • Mack RD688 • Volvo VHD T/A • Volvo VHD.

**TRUCKS:** Peterbilt 335 Office/Fracking Station.

**STREET SWEEPERS:** 2009 Elgin Pelican Series NP • Freightliner M2 • GMC Schwartz A-4000 • Sterling SC8000 COE • 2- Sterling SC8000 .

**ITEMS INCLUDE:** Tanks • Industrial Plant Equipment • Crane Accessories • Equipment Attachments • Industrial • Equipment Parts • Shop & Warehouse.

# DAY 5

**February 23, 2018 (Friday) 8:00am**  
Listings on page 38–42 inclusive

Notice to bidders: Due to the large number of items for day 5, it will be necessary to conduct two simultaneous rings.

**328** truck tractors | **78** hiboys | **23** lowboys  
**31** reefer trailers | **69** equipment trailers



Oshkosh M911 6x6 & Oshkosh F2365 6x6



2 – 2015 Freightliner CA125SLP Cascadia



2015 Caterpillar CT660S



Freightliner CL120 Columbia w/Boydston 9178S



Kingsley/Freightliner 4500 Coronado



2014 Landoll 440 50 Ft 40 Ton



2 – 2014 Great Dane 53 Ft



2013 Western Star 4900FA



1 of 2 – Mack CV713 Granite



1 of 7 – Mack CH613



2013 Peterbilt 388



1 of 2 – 2012 Caterpillar CT660S



2012 Caterpillar CT660L



1 of 11 – 2011 Freightliner CA125DC Cascadia



2 of 11 – 2011 Freightliner CA125DC Cascadia



1 of 4 – 2014 International ProStar



2 of 14 – 2013 International ProStar



1 of 10 – 2012 & 1 of 3 – 2011 International ProStar



1 of 6 – International 5500i



1 of 5 – 2012 Mack GU713



1 of 3 – 2012 Mack CXU613



2 of 5 – Mack CX613 Vision



2009 Peterbilt 386



2009 Peterbilt 386



Peterbilt 378



1 of 9 – 2012 & 1 of 4 – 2011 Volvo VNL300



1 of 3 – 2012 Volvo VNL670



1 of 4 – Kenworth W900L



Freightliner CL112 Columbia w/Boydston 9178S





2 of 4 – 2013 International 4300



American LaFrance



Sterling Acterra



2011 Mercedes-Benz 2500



2011 Eager Beaver 55GSL-PT 55 Ton



2 – 2017 Great Dane ETL111411053 53 Ft



2013 Great Dane 53 Ft



2015 Utility VS2DX 53 Ft



Dragon 150 Barrel



2011 Nelson WBFA-50UPIND 50 Ton



2009 Keystone Outback OB27L09



Trail Vision TV27FQS

## Equipment listings

**WINCH TRACTORS:** AM General M916 6x6 • Oshkosh F2365 6x6 • Oshkosh Tri Axle.

**HEAVY HAUL TRUCKS:** Caterpillar CT660L • Kenworth C500 10x6x4.

**328- TRUCK TRACTORS:** A M General Day Cab T/A • Capacity T17000 Terminal • Capacity Terminal Tractor • 2016 Caterpillar CT680 6x4 T/A • 2015 Caterpillar CT660S Day Cab T/A • 2014 Caterpillar CT660S Day Cab T/A • 2013 & 2- 2012 Caterpillar CT660S Day Cab T/A • 2013 Caterpillar CT660L Day Cab Tri/A • 2012 Caterpillar CT660L Day Cab T/A • 2015 & 2- 2014 Caterpillar CT660 Day Cab T/A • Ford L9000 Day Cab T/A • Freightliner FLD120064ST Day Cab Classic T/A • Freightliner CL120064ST Columbia Sleeper T/A • Freightliner MM112064ST Day Cab T/A • 2012 & 2011 Freightliner X12564ST Day Cab T/A • 6- 2012 Freightliner X12564ST Sleeper T/A • 2- 2012 & 2- 2011 Freightliner CA125SLP Cascadia Sleeper T/A • 2010 & 2009 Freightliner CA125SLP Cascadia Sleeper T/A • 2012 Freightliner CA125DC Cascadia Sleeper T/A • 8- 2012 & 2011 Freightliner CA125DC Cascadia Day Cab T/A • 14- 2011 Freightliner CA125DC Cascadia Day Cab T/A • Freightliner FLD120 Classic Sleeper T/A • 2- 2010 Freightliner CL120 Columbia Sleeper T/A • 5- Freightliner CL120 Columbia Day Cab T/A • Freightliner CL120 Heritage Sleeper T/A • 2- Freightliner CL120 Columbia Day Cab S/A • 6- Freightliner CL120 Columbia Sleeper T/A • 2- 2012 Freightliner CA113SLP Cascadia Sleeper T/A • Freightliner FLT64T COE T/A • Freightliner M2 112 T/A • Freightliner FLD Day Cab T/A • Freightliner Classic T/A • 2015, 2012, & 3-2011 Freightliner Cascadia Sleeper T/A • 2009 Freightliner Cascadia Sleeper T/A • 2012 & 2011 Freightliner Cascadia Day Cab T/A • International F9370 Day Cab T/A • 2- International 9200 Day Cab T/A •

International 9100i Day Cab S/A • International 9100i Day Cab T/A • International 9100 Day Cab T/A • 6- 2012 International 8600 Day Cab T/A • International 8600 Day Cab T/A • International 8600 Sleeper T/A • 2- International 8100 Day Cab S/A • 2011 International 7600 Day Cab T/A • International 5500i Day Cab T/A • 5- International 5500i Paystar Day Cab T/A • International 4900 Day Cab T/A • International 4700 Day Cab S/A • International S2600 T/A • 4- 2013 & 2- 2012 International ProStar+122 Sleeper T/A • 2- 2012 International ProStar+ 113 T/A • 2013 International ProStar T/A Day Cab T/A • 4- 2014, 2013 & 2012 International ProStar Sleeper T/A • 3- International ProStar Sleeper T/A • 2011 & 2009 International ProStar Premium Sleeper T/A • 2- 2011 International ProStar Premium Day Cab T/A • 2012 International ProStar Eagle Sleeper T/A • 3- 2013 & 3- 2012 International ProStar Day Cab T/A • 2012 International ProStar+ T/A Sleeper T/A • 9- 2013 & 2012 International ProStar+ Sleeper T/A • 2014 International ProStar+ Day Cab S/A • 2- 2013 International ProStar+ Day Cab T/A • 2012 International ProStar+ Day Cab T/A • 6- 2012 International ProStar+ Day Cab T/A • 3- 2012 • 2011 • 2010 & 2009 International ProStar T/A • 2- Kalmar 30 Terminal Tractor • Kenworth T2000 Sleeper T/A • 2010 Kenworth W900L Sleeper T/A • 2- Kenworth W900L Day Cab T/A • 2- Kenworth W900L Sleeper T/A • 2- 2009 Kenworth W900 Sleeper T/A • Kenworth W900 Day Cab T/A • Kenworth W900 Day Cab Tri/A • 2- Kenworth W900 Sleeper T/A • 2012 & 2009 Kenworth T800 Day Cab T/A • 8- Kenworth T800 Day Cab T/A • Kenworth T800 Sleeper T/A • 3- 2014 Kenworth T680 Sleeper T/A • 2- 2015 & 2014 Kenworth T660 Sleeper T/A • 2013 Kenworth T660 Day Cab T/A • 2- Kenworth T400 T/A • Kenworth K100E Day Cab T/A • 5- 2012 & 2010 Mack GU713 Day Cab T/A • Mack CV713 Day Cab Tri/A • Mack CU713 Granite Day Cab Tri/A • Mack CT713 Day Cab T/A • Mack DM690S Day Cab T/A • Mack DR688S Day Cab T/A • 3- 2012 Mack CXU613 Sleeper T/A • 2011 Mack CXU613 Day Cab T/A • 2- Mack CXN613 Sleeper T/A • Mack CX613 Day Cab T/A • 4- Mack CX613 Vision

Sleeper T/A • Mack CL613 Elite Day Cab Tri/A • Mack CHU613 T/A Day Cab T/A • Mack CH613 Day Cab Tri/A • Mack CH613 Day Cab Tri/A • Mack CH613 Sleeper T/A • 6- Mack CH613 Day Cab T/A • 2- 2012 Peterbilt 587 Sleeper T/A • Glidered - 2013 Peterbilt 388 Day Cab Tri/A • 2013 Peterbilt 388 Sleeper T/A • Peterbilt 387 Day Cab T/A • 2013 • 2- 2012 & 2011 Peterbilt 386 Sleeper T/A • 2-2009 Peterbilt 386 Day Cab T/A • 1- Peterbilt 386 Day Cab T/A • Peterbilt 379 T/A • 2-Peterbilt 379 Day Cab T/A 4- Peterbilt 379 Sleeper T/A • Peterbilt 378 Day Cab T/A • Peterbilt 377 Day Cab T/A • Peterbilt 375 T/A • Peterbilt 362 Day Cab T/A • Peterbilt 357 Day Cab T/A • Sterling LT9513 Day Cab T/A • 3- Sterling AT9500 Day Cab T/A • Sterling A9500 Day Cab S/A • 2- Sterling A9500 Day Cab T/A • 2- Sterling A9500 Day Cab T/A • Sterling 9500 Day Cab S/A • 5- Sterling L8500 Day Cab S/A • Sterling Actera Day Cab S/A • 3- 2012 Volvo VNL64670 Sleeper T/A • 4- 2012 Volvo VNL64300 Day Cab T/A • 2009 Volvo VNL780 T/A Sleeper T/A • 2017 Volvo VNL670 Day Cab T/A • 2017 • 2015 & 2013 Volvo VNL670 Sleeper T/A • 2012 Volvo VNL670 Day Cab T/A • 2- 2012 Volvo VNL670 Sleeper T/A • 2011 Volvo VNL670 Day Cab T/A • 2011 Volvo VNL670 Sleeper T/A • Volvo VNL670 T/A • Volvo VNL670 Sleeper T/A • 3- 2009 Volvo VNL630 Sleeper T/A • Volvo VNL630 Sleeper T/A • 9- 2012 & 4- 2011 Volvo VNL300 Day Cab T/A • 2- 2015 Volvo VNL64T300 Day Cab T/A • 2010 Volvo VNL42T Day Cab S/A • 2012 Volvo D13 T/A Day Cab T/A • Volvo Day Cab S/A • 2013 Western Star 4900FA Day Cab Tri/A.

**CAR CARRIERS:** Freightliner CL120 Columbia T/A 3 Car Open Headrack Hauler Truck • Freightliner CL120 T/A 11 Car Open Headrack Hauler Truck • Freightliner CL112 T/A 3 Car Open Headrack Car Hauler Truck.

**FUEL & LUBE TRAILERS:** Sage 11256 T/A Lube.

**BOOM TRUCKS:** Sterling Acterra T/A w/Effer 8600-2S.

**30- CAB & CHASSIS TRUCKS:** 2009 Chevrolet C6500 S/A • Chevrolet 3500 • 2013 Dodge 2500 Crew Cab 4x4 • Ford F750 S/A • 2013 & 2012 Ford F650 S/A • Ford F650 S/A • Ford F550 Crew Cab • 2- Ford F550 • Ford F450 • Freightliner M2106 Business Class S/A • 2- Freightliner M2106 T/A • 2009 GMC W5500 COE S/A • Hino 185 S/A • Hino 145 S/A • International 7400 T/A • International 4900 S/A • International 4700 S/A • 2011 International 4400 Durastar T/A • 2- 2011 International 4400 T/A • International 4400 S/A • International 4400 T/A • 4- 2013 International 4300 S/A • 2015 Kenworth T370 T/A.

**EMERGENCY VEHICLES:** American LaFrance Fire Truck • Kovach KFT11 Fire Truck • Spartan Gladiator Fire Truck • Sterling Acterra Ambulance.

**37- BUSES:** Chevrolet C5500 36 Passenger 35 Ft • 2015 Chevrolet 3500 10 Passenger • 2015 • 2013 & 2- 2009 Chevrolet 3500 Express • 2- Chevrolet 3500 Express • 2010 Chevrolet 2500 10 Passenger • Eagle 15 • Ford E450 • Ford E350 12 Passenger 23 Ft • Freightliner FS65 • Freightliner FB65 • Freightliner P6-S • Freightliner M Line • Freightliner • International 3800 48 Passenger T/A • 2- International 3800 65 Passenger 38Ft School • 7- International 3800 72 Passenger 37 Ft School • 2- International 35 Passenger 24 Ft School • 2012 International TerraStar 12 Passenger 24 Ft • 2013 International Goshen • 2011 Mercedes-Benz 2500 12 Passenger •

**23- LOWBOYS:** 2011 Eager Beaver 55GSL-PT 55 Ton Tri/A • Etnyre 50 Ton • Etnyre PRTN35TD3-PS-T1 • 2015 Globe GTBN352-48 35 ton • Landoll 660 T/A Roll Back • Landoll Tri/A • Load King 50 Ton Tri/A • Phelan T/A • ROGERS T/A • Talbert TDW35SHRG1T 35 Ton T/A • Trail King TK70DGH502 T/A • Trail King 50 Ton • Trail King 20 Ton T/A • Trail King TK11DHDG • Trailboss 35 Ton T/A • 4- 2018 Witzco RG-50 50 Ton Tri/A • 3- 2018 Witzco RG-35 35 Ton Tri/A •

**19- STEP DECK TRAILERS:** 2009 Cherokee Trailer Co Cherokee 53 Ft T/A • Clark CDFBT 7000 Lb 48 Ft T/A • East 4/Axle • Fontaine 352ST-48 25 Ton 48 Ft T/A Traveling Axle Trailer • 2- Fontaine 48 Ft T/A • 2- Fontaine DFT-5-7048AW 48 Ft T/A • 4- Fontaine T/A • 2012 Ledwell LW48HT 48 Ft Tri/A Hydraulic Tail • Trail-Eze TE70HT48 38420 Kg 48 Ft T/A Hydraulic Tail • Transcraft 50 Ft Spread Axle • 2016 Transcraft T/A • Transcraft T/A • Wabash 48 Ft T/A.

**ASPHALT TRAILERS:** Fruehauf 7000 Gallon Asphalt Tank Trailer • Polar 7500 Gallon Tank.

**JEEPS:** 2014 Globe stinger Booster.

**78- HIBOYS:** 13- • Aztec • Benson 48 Ft x 102 In. T/A Aluminum • Benson 45 Ft x 96 In. Spread Axle Aluminum • 2016 Cross Country 53 Ft x 102 In. Spread Axle • 2018 Dorsey • Fontaine FTW5804856WW 48 Ft x 102 In. T/A • Fontaine FTW58048SLWK 48 Ft x 102 In. T/A • Fontaine FTW58048SLW 48 Ft x 102 In. T/A • Fontaine FTW58048S6LWK 48 Ft x 102 In. T/A • Fontaine FTW58045LW 48 Ft x 102 In. T/A • Fontaine 48 Ft x 96 In. T/A • Fontaine 48 Ft x 102 In. T/A Spread Axle • 2- Fontaine 48 Ft T/A • Fontaine TP-4-4876SLW 48 Ft T/A • Fontaine T/A Stretch • 3- Fontaine T/A • Great Dane GPLS253102 53 Ft x 102 In. T/A • 2- Great Dane GPES-240-65 T/A • Great Dane 53 Ft T/A • Great Dane 48 Ft x 102 In. T/A Extendable • Great Dane 48 Ft x 102 In. T/A • Great Dane T/A • Ledwell 48 Ft x 92 In. T/A • Mac 48 Ft x 102 In. T/A Aluminum Spread • Manac 10248101 48 Ft x 102 In. T/A • 2017 Manac 10248C00L 48 Ft T/A Spread Axle Combination • 2017 Manac 10248C001L 48 Ft T/A Spread Axle • 2017 Manac 10248C001L 48 Ft T/A Spread Axle • 2017 Manac 10248C001L 48 Ft x 102 In. T/A Spread Axle Com • RAVENS 54541 45 Ft x 96 In. Aluminum Spread Axle • Reinke 48 FT x 96 IN. T/A Spread Axle • 2- Reinke 48 FT x 96 IN. T/A Spread Axle • Reinsfelder Super Beam 45 Ft x 96 In. • Transcraft TL-2000 S2 53 Ft x 102 In. T/A • Transcraft 53 Ft x 102 In. T/A Extendable • Transcraft 48 Ft x 102 In. Spread Axle • Transcraft Well Point Pipe Trailer 45 Ft x 96 • Transcraft Eagle W2 48 Ft x 102 In. Spread Axle • Transcraft T/A Combination Spread Axle • 2- Transcraft T/A • Utility 53 Ft x 102 In. T/A • 3- Utility FS2CNA 48 Ft x 102 In. T/A • Utility FS2CHAE 48 Ft x 102 In. T/A • 2- Utility FS2CHA 48 Ft x 96 In. T/A • Wabash L96 48 Ft x 102 In. T/A Spread Axle • Wabash L96 48 Ft x 96 In. T/A • Wabash L96 48 Ft x 96 In. T/A Spread Axle • 8- Wabash 48 Ft x 96 In. T/A •

**PNEUMATIC BULK TRAILERS:** Butler 1500 Cu Ft T/A Aluminum Bulk • Central Cilo CSP-4200 4200 Cu Ft S/A Cement • Heil 1600 Cu Ft T/A • Heil 1040 Cu Ft T/A • 2015 Heil 30 M3 T/A Aluminum Bulk • 3- LBT 4100 Cu Ft S/A Cement.

**12- END DUMP TRAILERS:** Baggett Brothers 28 Ft • Feiling 10 Ft • Hardee 22 Ft T/A • Hardee T/A • Load Trail 12 Ft • 2012 Lovett LTS4000ST • Mac 40 Ft T/A Aluminum Frameless • Mac 39 Ft T/A

Aluminum Quarter Frame • Ravens 26 Ft T/A • 2012 Towmaster THD10L • Warren WRDT26303AS 26 Ft.

**CAR HAULER TRAILERS:** Boydston 9178S 42 Ft x 8 Ft 6 In. T/A Open • Boydston 9178S 50 Ft x 8 Ft 6 In. T/A Open • Boydston 9100ST 42 Ft x 8 Ft T/A 6 Car • Cottre C5309 • 2015 Kaufman EZ4-4.

**CURTAIN SIDE TRAILERS:** Reitnauer 50 Ft x 102 In. Tri/A.

**31- REEFER TRAILERS:** 2- 2011 Great Dane CMT11412248 48 Ft x 102 In. T/A • 2- 2017 Great Dane ETL11411053 53 Ft x 102 In. T/A • 2015 Great Dane ESS11411053 53 Ft x 102 In. T/A • Great Dane 7811T21A 53 Ft x 102 In. T/A • 2010 Great Dane CMT-1112-12128 28 Ft S/A • 2015 • 2- 2014 & 2013 Great Dane 53 Ft x 102 In. T/A • 5- Great Dane 53 Ft T/A • 2011 Great Dane 48 Ft x 96 In. T/A • 3- 2010 Great Dane 48 Ft x 102 In. T/A • 2010 Great Dane 36 Ft x 102 In. T/A • Utility 53 Ft x 96 In. T/A • Utility 28 Ft S/A • 2009 Utility VS2RA 53 Ft x 102 In. T/A • Utility VS2RA 53 Ft x 102 In. T/A • 2013 Utility • 2017 Vanguard 1RBR5305 53 Ft x 102 In. T/A • Wabash RFLWHA 53 Ft x 102 In. T/A • Wabash 53 Ft x 102 In. T/A • 2009 Wabash 53 Ft T/A.

**CHIP TRAILERS:** Peerless 42CTS 42 Ft x 96 In. T/A.

**28- VAN TRAILERS:** Dorsey A1ETLS 45 Ft x 96 In. T/A • Express 10 x 5 Ft Enclosed • Fruehauf 48 Ft x 96 In. T/A • Fruehauf 48 Ft x 102 Ft T/A • Fruehauf FB8-12-48 48 Ft x 96 In. T/A • Great Dane 7811TZA 53 Ft T/A • Great Dane 711T 42 Ft x 96 In. T/A • Great Dane 48 Ft T/A • Great Dane 45 Ft T/A Enclosed Trailer • Haulmark C510BS 10 x 5 Ft Enclosed • Haulmark HAUL58SA 8 Ft x 5 Ft S/A Enclosed • Haulmark C58BS 8 Ft x 5 Ft Enclosed • Miller SFW-33-45-SAH 45 Ft T/A • Monon MA300ST54W 53 Ft x 102 In. T/A • Monon 53 Ft T/A • Pines 53 Ft x 8 Ft 6 In. T/A Aluminum • Sure Trac STR H10224TA Pro Series 24 Ft x 8 Ft T/A Enclosed Trailer • 3- Utility VS2R 53 Ft T/A • 2015 Utility VS2DX 53 Ft x 102 In. T/A • 2- Wabash 53 Ft x 102 In. T/A • Wabash 48 Ft x 102 In. T/A • 2- Wells Cargo 8 Ft x 5 Ft Enclosed.

**VACUUM TRAILERS:** Dragon 150 Barrel T/A • Dragon 130 Barrel T/A • Trav-L-Vac 59-000-01 S/A • Vermeer E800 Evacuator.

**TANK TRAILERS:** Butler 7900 Gallon • Etnyre 5000 Gallon T/A • Fruehauf 7300 Gallon T/A • 2015 Heil Super Jet • Proco T/A • Trailmobile F11S4CCI-5.

**69- EQUIPMENT TRAILERS:** Custombuilt 20 Ft • Custombuilt 7 Ft 6 In. x 7 Ft Utility • T/A • 2011 Custombuilt 10 Ft x 7 Ft 6 In. T/A Utility • Anderson G82912TC 24 Ft x 8 Ft 6 In. T/A Gooseneck • Betterbuilt 10 Ton 20 Ft T/A • 2015 Big Tex 14ET20BK 14000 Lb 17 Ft x 7 Ft T/A Utility • Bil-Jax 9 Ton 18 Ft T/A • 2- 2014 Brimar DT610LP-10 10 Ft x 6 Ft T/A Electric Dump • Butler LT712 3.5 Ton 10 Ft x 5 Ft 6 In. T/A Tilt • 2010 Carolina 18 Ft 5 In x 6 Ft 5 In T/A • Conrail C12 6 Ton 16 Ft x 5 Ft 10 In. T/A • Custombuilt 26 Ft x 8 Ft Tri/A • Ditch Witch T7B 3.5 Ton 15 Ft x 6 Ft 5 In. T/A Utility • Ditch Witch S7B 3 Ton 13 Ft 5 Ft Tilt Deck • 9- Ditch Witch S7B 3.5 Ton 13 Ft 5 Ft Tilt Deck Utility • Ditch Witch S2A • 2018 Double A 10224T7KGN 7 Ton 21 Ft x 8 Ft 6 In. T/A Goosen • 2018 Double A 8320T7K 7 Ton 20 Ft x 8 Ft 10 In. T/A Utility • 2018 Double A 8320T6K 6 Ton 18 Ft x 8 Ft 11 In. T/A Utility • 2- 2018 Double A 7714T 3.5 Ton 14 Ft x 6 Ft 5 In. T/A Utility • 2010 Down To Earth Trailers DTE828D010B 23 Ft x 8 Ft 6 In. T/A • Econoline • G&G Trailers 16 Ft x 6 Ft 2 In. T/A Utility • GHMC 20 Ft x 8 Ft T/A • Globe Trailers GTTU202-30-20 20 Ft x 8 Ft • 2012 Hudson HSLT18 • Hyster tilt deck • Irdo 20 Ft x 6 Ft 10 In. T/A • JCB 26 Ft x 8 Ft 6 In. T/A Gooseneck • Load Trail 5 Ton • 2015 MMDI 10 Ft T/A • 2015 MMDI 3.5 Ton 10 Ft x 5 Ft 4 In. T/A • Pitts DB3533CS 35 ton t/a • Port City Utility • Proline 20 Ft x 8 Ft 6 In. T/A Gooseneck • REM 20 Ft x 8 Ft • Roll Rite 630755 17 Ft x 6 Ft 6 In. T/A Tilt • Roll Rite RR 14KP17E 17 • 3- Stewart/Steverson Figure 8 • Superior 16 Ft x 8 Ft T/A Gooseneck • 2018 Tiger 10224T7KGN 7 Ton 21 Ft x 7 Ft T/A Gooseneck • 2018 Tiger 8320TK 20 x 7 Ft T/A • 2018 Tiger 8320T7KGN 7 Ton 20 Ft x 6 Ft 11 In. T/A Goose • 2018 Tiger 8320T7K 7 Ton 20 x 6 Ft 11 In. T/A • 2018 Tiger 8320T7 14000 Lb 21 x 7 Ft T/A Gooseneck • 2018 Tiger 8316T 18 x 7 Ft T/A • 2018 Tiger 8314S 1.5 Ton 14 Ft x 6 Ft 11 In. Utility • 2018 Tiger 8314S 14 x 7 Ft S/A • 2018 Tiger 7712S 1.5 Ton 12 Ft x 6 Ft 5 In. Utility • 2018 Tiger 6008LC 1 Ton 8 Ft x 5 Ft Utility • 2018 Tiger 20 Ft x 7 Ft T/A • Towmaster T20 14000 Lb 20 Ft x 8 Ft 6 In. T/A • Trail King TK70HT482 • Triple Crown 16 Ft x 6 Ft Utility • Triple Crown Utility Trailer.

**REEL TRAILERS:** Butler HWSC10 • Butler HWSC5 • Butler 1 Reel S/A • Champion RT101 S/A • Roesse S/A.

**33- TRAILERS:** 8 Ft x 3 Ft • Fuel • Cal Trailers Core Drill • Unused - 2018 Double A 4808S 8 Ft x 4 Ft S/A Welding • 2018 Double A Trailers Intruder 8 Ft x 6 Ft • Duneright 22 Ft 8 In. Rolloff • Galyean 36 In. x 86 In. 25 Ton T/A Tender T • Galyean 36 Ft x 86 In. 25 Ton T/A Tender Tr • Hackney 41 x 8 Ft T/A Aluminum Beverage • 3- Hackney 40 Ft x 8 Ft T/A Beverage • 2- Hackney RTX Reefer 34 Ft x 8 Ft Beverage Trailer • Hackney 32 Ft x 8 Ft Beverage • Heister Lift Bed 18 Ft x 96 In. • 2- KBH 32 Ft x 50 In. 25 Ton T/A Tender Tr • 5- KBH 32 Ft x 102 In. 25 Ton T/A Tender T • 2014 Landoll 440 50 Ft x 102 In. 40 Ton T/A Rollback • Landoll 39 Ft 8 In. x 101 In. Tri/A Rollback • Miller Orange 40 Ft x 96 In. • Miller 40 Ft x 96 In. Open Top • Miller 40 Ft Open Top • 2011 Nelson WBFA-50UPIND 50 Ton Quad/A • Pitts D48 Log Loader • PJ Tri/A Machine Shop • Ram Lin S/A Boat • Trail King Red River 30 Ton Live Bottom Trailer.

**10- MODULAR TRAILERS:** Goldhofer 71336PV-490/60 Power Pack Unit • 2- Goldhofer PVF-490/60-31 Power Pack Unit • Goldhofer PVF-210/30-19 Power Pack Unit • 2- 2009 Goldhofer PST/SL-E6-12X06 216000 kg • 2009 Goldhofer PST/SL-E6-12X04 216000 kg • 2009 Goldhofer PST/SL-E6-12X06 216000 kg • 2- 2009 Goldhofer PVF/S1-E6-12X06 216000 kg.

**RECREATIONAL VEHICLES:** 2010 Gulfstream 28RLR T/A Travel Trailer • Keystone Cougar 35 Ft T/A Fifth Wheel Travel Trailer • 2009 Keystone Outback OB27L09 T/A Toy Hauler Travel Trailer • Kingsley/Freightliner 4500 Coronado T/A Custombuilt Motor Home • 2009 Scamper Kodiak 22 Ft T/A Camper • Trail 26 Ft Travel Trailer • Trail Vision TV27FQS 27 Ft T/A Travel Trailer.

**COMMERCIAL VESSELS:** 2- 2016 & 2015 Oil Skimmers.

**ITEMS INCLUDE:** Pleasure Craft • Aircraft • Utility Equipment Equipment Attachments • Demolition & Recycling Attachments • Industrial • Equipment Parts • Parts / Stationary • Construction.

# DAY 6

**February 24, 2018 (Saturday) 8:00am**  
Listings on page 43–47 inclusive

Notice to bidders: Due to the large number of items for day 6, it will be necessary to conduct two simultaneous rings.

**112** van trucks | **88** flatbed trucks | **195** pickups  
**70** air compressors | **165** light towers



2 of 20 – 2013 International 4300



2 – 2013 International 4300



2015 Multiquip DCA45SSIU4F 36 KW



York 500 Ton Chiller



2015 Chevrolet 2500HD 4x4



GMC C7500 w/Altec LRV55



Ford F650 XL



**Sterling Acterra w/Effer 8600-2S**



**2015 Hino 195**



**Freightliner FL80 w/Altec AA755L**



**1 of 5 - 2014 GMC G3500**



**1 of 3 - 2009 International 4300**



**2014 Isuzu NPR**



**2 of 6 - Chevrolet 2500**



**2016 Ford F250**



**2 of 3 - 2012 Ford F550 4x4**



**2011 Ford F350 XLT 4x4**



2009 Freightliner M2106



Isuzu NPR



Freightliner Sprinter



2011 International TerraStar



2013 Ram 3500 4x4



1 of 2 – 2013 Ford F150 XL 4x4



2012 Ford F150 XL 4x4



2011 Ford F150 King Ranch 4x4



2011 Ford Ranger



1 of 3 – Chevrolet 1500 4x4



2016 Nissan Frontier



2013 Ram 1500 4x4



2004 American Iron Horse



1996 Harley Davidson Fatboy



2017 Lincoln Ranger 225

## Equipment listings

**11- AUTOMOBILES:** Cadillac Fleetwood Stretch Limousine • Chevrolet Impala • Chevrolet Cobalt LS • 2- Dodge Neon • 2014 Nissan Altima S • 2010 Nissan Altima • 2010 Pontiac Grand Prix • Suzuki x90 • 2014 Suzuki Swift • Toyota Corolla.

**37- SPORTS UTILITY VEHICLES:** American General M998 4x4 Humvee • 2013 • 8- 2011 & 4- 2010 Chevrolet Tahoe 4x4 • Chevrolet Tahoe LT 4x4 • 3- 2015 • 2014 & 2- 2009 Chevrolet Tahoe LS 4x4 • 2013 Chevrolet Suburban LT 4x4 • 2- 2014 & 2013 Chevrolet Traverse LS • 2015 • 2014 • 2011 • 2010 & 2009 Chevrolet Tahoe • 2- Ford Expedition • 2012 Ford Escape • Ford Escape • Hyundai Santa Fe • Jeep Grand Cherokee 4x4 • Mercedes-Benz ML320.

**BUCKET TRUCKS:** Ford F550 4x4 w/Altec AT35G • Ford F550 XL w/Altec AT37G • Freightliner FL80 w/Altec AA755L • GMC C7500 w/Altec LRV55 • International 4900 T/A w/Altec A77T • 2010 International 4300 w/Altec TA40.

**REEFER TRUCKS:** 2013 • 3- 2012 & 2009 Freightliner M2 S/A • GMC Topkick • 2013 Isuzu NRR COE S/A • 2010 Isuzu NPR COE • 2012 Mitsubishi Fuso FE180.

**112- VAN TRUCKS:** 2009 Chevrolet C5500 • Chevrolet W4500 COE • 2014 Chevrolet 3500 Cargo • Chevrolet 3500 Express • 2- Chevrolet 3500 • 6- Chevrolet 2500 • 2010 Chevrolet 1500 Express • 7- Chevrolet 1500 • Dodge Sprinter • 2015 Ford F650 • Ford F650 XL • 2- 2014 • 5- 2013 & 2- 2012 Ford E350 • 2010 Ford E350 • Ford E350 • 2011 Ford E350 XLT • 2010 Ford E250 • 2012 Ford Transit Connect • 2009 Ford Transit • 2- Freightliner 2500 Sprinter • 2016 Freightliner Cascadia S/A Sleeper • Freightliner MT45 Step • 2- 2012 & 2011 Freightliner M2 S/A • GMC P3500 Step • 3- 2014 GMC C3500 • 2- 2014 GMC G3500 • 2009 Hino 268 • Hino 268 • 2015 Hino 195 COE • 2011 Hino 258LP S/A • International 4700 • 3- 2011 International 4400 S/A • 2013 & 5- 2012 International 4300 DuraStar S/A • 19- 2013 & 4- 2012 International 4300 S/A • 3- 2011 International 4300 • 2- 2011 International 4300 Durastar • 2009 International 4300 • 2- 2009 International 4300 S/A • International 4300 Moving Sleeper • 3- International 4300 • 2- International 4200 • 2009 International City Star • 2015 Isuzu NQR COE S/A • 2013 Isuzu NPR HD COE S/A • 2014 Isuzu NPR COE Crew Cab • Kenworth T370 S/A • 2016 Mercedes-Benz Sprinter 2500 • 4- 2014 Mitsubishi FEC92S COE S/A • 4- 2013 & 2012 Mitsubishi FEC92S COE S/A • 2012 Mitsubishi FEC72S COE S/A • Sterling Acterra.

**TOW TRUCKS:** Ford L8000.

**88- FLATBED TRUCKS:** 2- 2009 Chevrolet C6500 • Chevrolet C5500 • 2- 2015 • 4- 2014 • 2- 2013 & 2- 2012 Chevrolet 3500HD Crew Cab • 3- 2011 & 2010 Chevrolet 3500HD Crew Cab 4x4 • 2- 2010 Chevrolet 3500HD Crew Cab • 2009 Chevrolet 3500HD Crew Cab 4x4 • 2- 2009 Chevrolet 3500HD • 6- 2009 Chevrolet 3500HD Crew Cab • Chevrolet 3500HD Crew Cab 4x4 • 2- Chevrolet 3500HD • 4- Chevrolet 3500HD Crew Cab • 2011 Chevrolet 3500 Crew Cab • Chevrolet 3500 • Dodge W5500 Crew Cab 4x4 • Ford F800 Flatbed Dump Truck • Ford F800 • 2- 2015 Ford F750 XL • Ford F650 XL • 2- Ford F650 • 2012 Ford F550 Crew Cab 4x4 • 2- 2012 Ford F550 XL Crew Cab 4x4 • Ford F550 • Ford F550 XL Extended Cab 4x4 • 2015 Ford F450 XL Crew Cab 4x4 • Ford F450 • Ford F450 4x4 • Ford F450 XL Crew Cab • 2011 Ford F350 XLT Crew Cab 4x4 • 2010 Ford F350 XL Crew Cab • 2- Ford F350 • 2016 Ford F250 • Freightliner M2 T/A • 2011 & 2- 2010 Freightliner M2 Crew Cab 4x4 • 2009 Freightliner M2 T/A • Freightliner M2 T/A • GMC C7500 • 2009 GMC C5500 Crew Cab • GMC W4500 COE • 2011 GMC 3500HD Crew Cab • 2- GMC 3500 • 2- GMC Topkick • International 7400 T/A • International 4900 S/A • 2- 2013 International 4300 S/A • 2- International 4300 Durastar S/A • Isuzu NPR COE • Mack MR688S T/A • Peterbilt 357 • Peterbilt 330 T/A • 2012 Ram 5500 Crew Cab • 2011 Ram 5500 • 3- 2011 Ram 4500 Crew Cab • 2012 Ram 3500 Crew Cab 4x4.

**TRUCKS:** Ford CF7000 Attenuator Truck • Ford F750 Attenuator Truck • Ford F700 Chip Truck • Ford F700 Attenuator Truck • Freightliner M2 Beverage Truck • Freightliner Sprinter Catering Truck • 2011 International TerraStar S/A Beverage Truck.

**195- PICKUPS:** 2009 Chevrolet 3500 Crew Cab 4x4 • Chevrolet 3500 • Chevrolet 3500 LT Extended Cab Dually • 2015 & 2011 Chevrolet 2500HD Crew Cab 4x4 • 2011 Chevrolet 2500HD Extended Cab • 2010 Chevrolet 2500HD Crew Cab • 2010 Chevrolet 2500HD LS Crew Cab 4x4 • 5- 2010 Chevrolet 2500HD Crew Cab 4x4 • 2009 Chevrolet 2500HD • 2009 Chevrolet 2500HD Crew Cab • 3- 2009 Chevrolet 2500HD Crew Cab 4x4 • Chevrolet 2500HD Extended Cab • 2- Chevrolet 2500HD • 2- Chevrolet 2500HD • Chevrolet 2500 Extended Cab • Chevrolet 2500 LS Extended Cab 4x4 • 15- Chevrolet 2500 • Chevrolet 1500 Extended Cab • 2- 2014 Chevrolet 1500 Crew Cab 4x4 • 20- 2014 Chevrolet 1500 Crew Cab • 2- 2013 Chevrolet 1500 Crew Cab 4x4 • 24- 2013 Chevrolet 1500 Crew Cab • 2012 Chevrolet 1500 Z71 Crew Cab 4x4 • 2- 2012 Chevrolet 1500 Crew Cab • 2- 2012 Chevrolet 1500 Extended Cab • 2011 Chevrolet 1500 • 2011 Chevrolet 1500 Crew Cab 4x4 • 2- 2011 Chevrolet 1500 Extended Cab 4x4 • 3- 2011 Chevrolet 1500 Extended Cab • 2010 Chevrolet 1500 Crew Cab 4x4 • 2010 Chevrolet 1500 Extended Cab 4x4 • 9- 2010 Chevrolet 1500 Extended Cab • 7- 2009 Chevrolet 1500 Extended Cab 4x4 • Chevrolet 1500 Crew Cab • Chevrolet 1500 Crew Cab 4x4 • Chevrolet 1500 Extended Cab • Chevrolet 1500 LS 4x4 • 2- Chevrolet 1500 • 4- Chevrolet 1500 Extended Cab 4x4 • 2010 Chevrolet Colorado Z71 Crew Cab 4x4 • 2012 Chevrolet Crew Cab 4x4 • 2011 Chevrolet Colorado Crew Cab 4x4 • 2011 Chevrolet Colorado LT Crew Cab • 2- 2010 & 2009 Chevrolet Colorado Extended Cab • 2013 Ram 3500 Crew Cab 4x4 • Dodge 2500 Crew Cab • 2- Dodge Dakota • 4- 2011 Ford F350 Extended Cab 4x4 • 2013 Ford F250 XL Extended Cab 4x4 • 2011 Ford F250 Extended Cab 4x4 • 2011 Ford F250 XL Crew Cab 4x4 • 2009 Ford F250 Crew Cab • Ford F250 Crew Cab 4x4 • Ford F250 XL Crew Cab 4x4 • 2- Ford F250 • 2- Ford F250 Extended Cab • 2013 Ford F150 • 2013 Ford F150 Extended Cab • 2013 Ford F150 XL 4x4 • 2013 Ford F150 XL Extended Cab 4x4 • 2012 Ford F150 XL Crew Cab 4x4 • 2011 Ford F150 Crew Cab • 2011 Ford F150 King Ranch • 2011 Ford F150 King Ranch Crew Cab 4x4 • 2011 Ford F150 XL Crew Cab • 2011 Ford F150 XL Extended Cab 4x4 • 2010 Ford F150 • 2010 Ford F150 XL Extended Cab • 2- 2010 Ford F150 Extended Cab • Ford F150 • Ford F150 4x4 • Ford F150 XL • Ford F150 XL Extended Cab • Ford F150 XLT Extended Cab 4x4 • 4- Ford F150 Extended Cab 4x4 • Ford Ranger 4x4 • 2011 & 2009 Ford Ranger Extended Cab • Ford Ranger Extended Cab • GMC 2500HD Extended Cab 4x4 • 2009 GMC 1500 Extended Cab • GMC 1500 SLT Crew Cab 4x4 • Nissan Frontier 4 Door Extended Cab 4x4 • 2016 Nissan Frontier Extended Cab • 2014 & 2013 Ram 2500 Crew Cab 4x4 • 2014 • 2013 & 2- 2012 Ram 1500 Crew Cab 4x4 • 2011 Toyota Tundra 4x4 • 2013 Toyota Tacoma 4x4 4x4 • 2012 Toyota Tacoma 4x4.

**RECREATIONAL VEHICLES:** American Iron Horse Motorcycle • 2014 Club Car Precedent Electric Golf Cart • Ez Go TXT Electric Golf Cart • Harley Davidson Fatboy Motorcycle • Huawin HY50QT5 Scooter.

**70- AIR COMPRESSORS:** Airman PDS400S 400 CFM Portable • Airman • 2013 Atlas Copco XATS375 375 CFM Portable • 2011 Atlas Copco XAS375T3 375 CFM Portable • 2010 Atlas Copco XAS185JD7 185 CFM Portable • 2- 2011 Atlas Copco XAS185JD 185 CFM • Atlas Copco 80-185 185 CFM Portable • 2009 Doosan XP375WIR • 2012 Doosan P185WJD 185 CFM Portable • 2012 Doosan C185WKU 185 CFM • 2013 Doosan 185 CFM Skid Mounted • Gardner-Denver EndurAir Electric • Ingersoll-Rand 2545E10 • Ingersoll-Rand XP1200AWCU 1200 CFM Portable • Ingersoll-Rand XP375WIR 375 CFM Portable • Ingersoll-Rand XP375WCU 375 CFM Portable • Ingersoll-Rand XP375 375 CFM • 3- Ingersoll-Rand XP375 375 CFM Portable • 2009 Ingersoll-Rand HP375 375 CFM Portable • 2009 Ingersoll-Rand 375 CFM Portable • 2- 2009 Ingersoll-Rand XR185WIR 185 CFM Portable • 2009 Ingersoll-Rand XP185WJD 185 CFM Portable • 2- Ingersoll-Rand XP185WIR 185 CFM Portable • 2012 Ingersoll-Rand P185WJD-T41 • 2009 Ingersoll-Rand P185WJD 185 CFM Portable • 8- Ingersoll-Rand P185WJD 185 CFM Portable • 2009 Ingersoll-Rand P185 185 CFM • 6- Ingersoll-Rand P185 185 CFM Portable • 2- Ingersoll-Rand

185 CFM Portable • Kaeser 210 210 CFM Portable • 2014 Kaeser 185 185 CFM Portable • Kaeser T51 • 2- 2014 Kaeser M50 185 CFM Portable • Leroi 250 CFM Portable • Leroi Q185DKE Portable • PCI BB200 350 PSI Nitrogen Membrane Unit • Quincy QS11500 1500 CFM • 2- Quincy QS11000 1000 CFM • Quincy QS1750 750 CFM • Saylor Beall • Speedaire 8 Gallon • Sullair 375 • Sullair V200TS100HA Electric • 2010 SULLAIR 185 CFM Portable • Sullair 185 185 CFM Portable • 2012 Sullair 1809D/A Electric • Sullair 185DPQPERK 185 CFM Portable • Sullair 185DPQJD Portable • Sullair LS16-75H 330 CFM • 2- Sullair DR13-200H Elctr 785CFM • 2013 Sullivan 375 CFM Portable • Sullivan D185Q11D 185 CFM Portable • 2013 Sullivan/Palatek D185PJD 185 CFM Portable.

**12- INDUSTRIAL GENERATOR SETS:** 640 KW Skid Mounted Stand-By • 2- 2011 Baldor IDLC275-4J 250 KW Skid Mounted • Caterpillar 3456XQ400 400 KW • 2014 Caterpillar XQ350 • Caterpillar SR4B 545 KW Skid Mounted • Caterpillar SR4B 580 KW Skid Mounted • Caterpillar SR4B Skid Mounted • Caterpillar SR4 250 KW Skid Mounted • Caterpillar SR4 600 KW Skid Mounted • Caterpillar SR4 Skid Mounted • Marathon ATPCB7771601 700 KW Containerized.

**GENERATOR SETS:** Caterpillar SR4B 820 KW Skid Mounted.

46- CONSUMER GENERATOR SETS: 5- CT Power 7000LN 5 KW • 4- DeWalt DG7000 7 KW • Honda EB 6500X Portable • 7- Honda EB6500X • 2- 2013 & 2012 Honda EB6500 6.5 KW • Honda EB5000 5 KW • 2012 & 2011 Honda EU3000H 3 KW • Kubota GL6500S 6 KW Portable • Multiquip GA9.7HEA Portable • 2- 2012 Multiquip GA6HB 6 KW • Unused - Mustang DP6500 6.5 KW • 2012 Wacker GP6600A 6 KW • 3- Wacker GP6600A 6 KW • 2- 2014 Wacker GPS5600A 5 KW • 8- 2013 Wacker GP5600A 5 KW • 2- 2010 Wacker GP5600A 5 KW.

**30- LIGHT GENERATOR SETS:** 200 KW Portable • 2011 Baldor IDLC2254J 200 KW Skid Mounted • Generac 3141740100 135 KW Skid Mounted • 2013 Hipower HR3W310 248 KW • Kohler CH136 Portable • Kohler 60RZ282 60 KW Skid Mounted • 2013 Magnum MMG235 186 KW Portable • 2010 Magnum MMG150 116 KW Portable • 2014 Magnum MMG75D 62 KW Portable • 2010 Magnum MMG75 52 KW Portable • Multiquip DCA300SSCU 240 KW Skid Mounted • Multiquip DCA220SSJU 176 KW Skid Mounted • Multiquip DCA220 176 KW Portable • Multiquip DCA180SSV 144 KW Portable • 2012 Multiquip DCA85SSJU2 68 KW Portable • Multiquip DCA70USSJ2 56 KW Portable • Multiquip DCA45USI 26 KW Skid Mounted • 2015 Multiquip DCA45SSIU4F 36 KW Portable • Multiquip DCA45SSIU4F 36 KW Portable • Multiquip DCA25SSIU4F 20 KW Skid Mounted • Multiquip DCA10SPX4 10 KW Portable Gen Set • REID 125 KW Portable • 3- Libby MEP-803A 10 KW • Wacker G60T 50 KW Skid Mounted • Vermont 10 KW Skid Mounted • Generac 97A05156-S 125 KW Skid Mounted • 2- L3 60 KW Skid Mounted • Magnum MMG35 28 KW Skid Mounted • 2011 Multiquip DCA70USI2 60 KW Portable • Onan 35G 35 KW Skid Mounted Stand-By • Terex OT120P 90 KW Skid Mounted.

**165- LIGHT TOWERS:** 2012 Allmand PRO212 Portable • Allmand Portable • 3- 2012 & 2011 Allmand Night-Lite Pro Portable • Allmand Night-Lite Pro Portable • Allmand Bros. Maxi-Lite 695 • 2- 2015 Allmand Bros. Night-Lite Pro Portable • 5- Allmand Bros. Night-Lite Pro Portable • Amida Portable • Unused - 2017 Atlas Copco QLD502 • 9- 2015 Doosan LSWKUB Portable • 8- 2015 Doosan Portable • 3- Doosan Portable • 2011 Doosan LSC Portable • Genie TML7000N Portable • 7- 2015 Ingersoll-Rand LSWKUB-60HZ-T4F Portable • 2010 Ingersoll-Rand LS6KW Portable • 2009 Ingersoll-Rand L6-4MH Portable • 18- 2009 Ingersoll-Rand Portable • 12- Ingersoll-Rand Portable • 2- Ingersoll-Rand LS Portable • 34- 2009 Ingersoll-Rand Light Source Portable • 28- Ingersoll-Rand Light Source Portable • 2014 Magnum MLT3060K Portable • 4- 2012 & 2011 Magnum MLT3060 Portable • 3- 2015 Magnum MLT6SM Portable • 3- 2012 Terex RL4 Portable • Terex AL4060D4MH Portable • 4- 2012 Tower Worx Stadium Portable • 3- Tower Worx Stadium Portable • 2013 Wacker LTN6-L Portable.

**13- SIGN BOARDS:** 2- Addco ADS Portable Sign Board • Allmand Eclipse AB 2220 Arrow Board • Precision B1200B Sign Board • 2010 Precision Solar Portable Sign Board • 2- Precision Solar CPU-5M Solar Sign Board

• Precision Solar Controls Solar Sign Board • 2012 WANCO Solar Portable Arrow Board • 4- 2010 Wanco Solar Portable Sign Board.

**180- WELDERS:** Qty Of Miller Maxstar 210 Welders • ACS Big 8 Skid Mounted • 7- Lincoln DC655 2 Pack • 2010 Lincoln SAE500 Portable • 4- Lincoln Commander 500 • 2- 2013 & 10- 2009 Lincoln Vantage 400 Portable • Lincoln Vantage 400 Portable • 3- Lincoln SAE400 Skid Mounted • Lincoln Commander 400 • 8- 2009 Lincoln 400 Amp • Lincoln 400 Amp • 2009 Lincoln V350-PRO 6 PACK • Lincoln V350-Pro 3 Pack • 6- Lincoln V350-PRO 6 Pack • 3- 2012 Lincoln Classic 300D Portable • 2009 Lincoln V275-S 8 Pack • 2009 Lincoln V275S • 2- Lincoln V275S • 2017 Lincoln Ranger 225 Portable • Lincoln Ranger 10LX Welder • Lincoln Ranger 9 Portable • Lincoln Ranger 8 • Lincoln 8 Pack 350 Amp Skid Mounted • 2009 Lincoln 8 Pack 275 Amp • 17- Lincoln 8 Pack 275 Amp • 2009 Lincoln 6 Pack 350 Amp Skid Mounted Electric • 3- 2009 Lincoln 6 Pack 350 Amp • 7- Lincoln 6 Pack 350 Amp • 6- Lincoln 4 Pack 350 Amp • 3- Lincoln 4 Pack 350 Amp • Lincoln Ranger GXT • Miller Big 50 Portable • 3- Miller 801D • Miller Big Blue 402D Portable • 2010 Miller 400D • Miller 400D Skid Mounted • 2- Miller Big Blue 400P • 11- Miller Big Blue 400P Portable • 2009 Miller Big Blue 400D Portable • 2- Miller Big Blue 400D • Miller Big Blue 400 Portable • 6- Miller Big Blue 400 • 2009 Miller XMT350 3 Pack • 2009 Miller XMT350 4 Pack • Miller XMT350 • 4- Miller XMT304 6 Pack • Miller 301G • 2- Miller CST 280 • 19- Miller Trailblazer 275 • 2013 Miller Synrowave 250DX Skid Mounted Electric • 2- Miller Bobcat 250 • 2009 Miller Wildcat 200 • 2- Miller Big 40 • Miller Trailblazer Pipe Pro 350 Skid Mounted • 2014 Multiquip DLW330X • Multiquip TLW300SS Portable Multi-Function Unit • Powcon 300SS/400SS Electric 4 Pack • 2- Powcon 300SS Electric 4 Pack • 11- Red-D-Arc D502K Portable • Thermadyne Thermal Arc 300 4 Pack Skid Mounted Electric • 4- Thermal Arc TR250 Electric • UN Mig KT50TP Mig • 2012 Vantage 500 Portable.

**84- PUMPS:** 4- WP80L 3 In. • 4 In. Self-Priming Portable Water • Qty Of Wacker Neuson PT3 3 In. Portable Trash Pumps • Qty Of Multiquip QP3TH 3 In. • 2- Unused - Qty Of Mustang 2 In. Submersible Pumps • Qty Of Koshin Portable Trash Pumps • Qty Of Honda • Acme Dynamic Q1150RT 6 In. Portable Trash • Acme Pump 8 In. • 3- Acme Pump 6 In. Portable • 3- Bell & Gossett 4 In. Electric • 2- Caterpillar 3000 PSI Skid Mounted Triplex • GODWIN CD200 Portable • Godwin CD80M 3 In. Portable • Godwin 6 In. • Godwin Pumps CD200 7 In. Portable • Godwin Pumps CD150M 6 In. Portable • Godwin Pumps CD150M 7 In. Portable • Godwin Pumps CD100M Dri-prime Portable • Gorman Rupp 84A2JE 4 In. Portable • Unused - Gwalker WPC3 3 In. • 2013 & 2011 Honda WT30X 3 In. • Koshin KTH-50X 2 In. • 4- Morris D123430 • Multiquip QP4TH 4 In. Portable • 2009 Multiquip QP3TH 3 In. • 2- Multiquip MQD3H 3 In. Portable • 2- Multiquip 3 In. Portable • Multiquip 3 In. Diaphragm • Multiquip 3 In. • 2- Multiquip • Munro Self-Priming • 3- MWI RP008 7 In. Skid Mounted • MWI RW008 7 In. Skid Mounted • Pioneer PP66S12L 6 In. • Power Prime DV1501 Portable • Power Prime UV150IPE 6 In. Portable • 2- Unused - Qty Of Gwalker SEP37050 Submersible Pumps • Unused - Qty Of Gwalker Submersible Pumps • Unused - Qty Of Gwalker WQD6160.75 Submersible Pump • Unused - Qty Of Gwalker WQD6160.75 Submersible • 2- Unused - Qty Of Gwalker SSP370 Submersible Pumps • Unused - Qty Of Gwalker WVSD75 Submersible Pumps • Unused - Qty Of Gwalker WVSD75A2 Submersible Pumps • 2- Unused - Qty Of Gwalker 4ND20G4 Submersible Pumps • Smalline SL4DDP • 2- 2011 Sykes GP100-60 4 In. • Thompson 6TSC • 2- Thompson 6 In. Skid Mounted • Thompson 6 In. • Thompson 6HTDSS42011 Portable • Thompson 4 In. Skid Mounted • Thompson Skid Mounted • 2014 Wacker PST2400 2 In. Submersible • 2013 Wacker PTS4V 4 In. Portable • Wacker PG3 3 In. • Wacker Hydraulic Portable • 2- Wacker Neuson PT3A 3 In. • Wacker Neuson PT2A 2 In. • Wilden Qty Of 4 In.

**ITEMS INCLUDE:** Industrial Items • Equipment Parts • Engines • Truck Attachments • Shop & Warehouse • Mobile Structures • Personnel Lifts • Survey Equipment • Landscape Equipment • Livestock Equipment • Parts / Stationary - Construction & Transportation.

» Visit our website for complete and up-to-date listings

[rbauction.com/Orlando2018](http://rbauction.com/Orlando2018)



3 of 4 – 2015 John Deere 460ET 6x6



2011 Grove RT9150E 150 Ton 4x4x4



2015 Caterpillar D6T – Located Reserve, LA



2015, 2013 & 2012 Lee-Boy 8616B



2017 Ford F550 4x4 w/IMT 3820



1 of 2 – 2014 Caterpillar TH417C 8800 Lb 4x4x4

Orlando, FL February 19–24, 2018 (Mon–Sat)

**rb** **RITCHE BROS.**  
Auctioneers®

**60**  
YEARS